



This report contains information about placements, commencements and post labour market assistance outcomes achieved for employment services managed by the Department of Employment and Workplace Relations.

Main features

Outcomes

The positive outcomes (employment and/or education/training) rates achieved in the year ending December 2005, three months after leaving assistance were:

- 75% for Job Placement;
- 62% for Intensive Support job search training;
- 54% for Intensive Support customised assistance;
- 61% for Intensive Support;
- 85% for New Enterprise Incentive Scheme (NEIS);
- 42% for Work for the Dole;
- 44% for Community Work Placements;
- 69% for Indigenous Employment Programme Structured Training and Employment Projects (STEP);
- 70% for Indigenous Employment Programme Wage Assistance;
- 59% for Indigenous Employment Centres; and
- 57% for Transition to Work.

Job Vacancies

In the year to end December 2005, 2,154,000 vacancies were notified on the Australian Job Search database, of which over 1,015,400 were lodged by Job Network Members or Job Placement Organisations (including vacancies lodged through the Internet and Teleservicing).

Job Placements

In the year to end December 2005, over 657,000 Job Network eligible job seekers were placed into Job Placement vacancies by Job Network Members or Job Placement Organisations.

Commencements

In the year to 31 December 2005, commencements in the various types of labour market assistance included:

- 510,800 in Job Search Support;
- 371,400 in Intensive Support;
- 6,300 in NEIS;
- 5,900 in the STEP and Wage Assistance elements of the Indigenous Employment Programme;
- 2,900 in Indigenous Employment Centres;
- 84,900 in Work for the Dole;
- 3,500 in Community Work Placement; and
- 11,700 in Transition to Work.

Income Support

In the year to end December 2005, the number of job seekers in receipt of Newstart or Youth Allowance (Other) decreased by around 30,000 to just over 560,000 job seekers. The number of job seekers who were long-term recipients (ie on allowances for 12 months or more) decreased by over 18,500 to around 335,700 while the number of short-term recipients decreased by over 11,400 to around 224,400.

In this issue

Changes to the Employment Services Market In this report...	Page 3 Page 3
Section 1: Labour Market Assistance Outcomes	Page 4
Table 1.1 Post assistance labour market outcomes year to end December 2005	Page 4
Table 1.2 Post assistance employment and positive outcomes year to end December 2005	Page 5
Table 1.3 Intensive Support 12 month cohort: Post assistance outcomes year to end December 2005	Page 6
Table 1.4 Intensive Support 24 month cohort: Post assistance outcomes year to end December 2005	Page 7
Table 1.5 Intensive Support combined samples: Post assistance outcomes year to end December 2005	Page 8
Table 1.6 Intensive Support customised assistance: Post assistance outcomes year to end December 2005	Page 9
Table 1.7 Intensive Support job search training: Post assistance outcomes year to end December 2005	Page 10
Table 1.8 Job Placement: Post assistance outcomes year to end December 2005	Page 11
Table 1.9 New Enterprise Incentive Scheme: Post assistance outcomes year to end December 2005	Page 12
Table 1.10 Work for the Dole: Post assistance outcomes year to end December 2005	Page 13
Section 2: Trends in outcomes for Labour Market Assistance	Page 14
Figure 2.1 Trends in outcomes for employment services 2000 – 2005	Page 14
Section 3: Access to and Participation in Labour Market Assistance	Page 15
Table 3.1 Participation by type of labour market assistance in each of the past two years	Page 15
Table 3.2 Participation in Job Network assistance by job seeker characteristics: December 2005	Page 16
Table 3.3 AJS Vacancies and Job Placements by industry and ASCO codes: December 2005	Page 17
Table 3.4 Access to NEIS by job seeker characteristics year to end December 2005	Page 18
Table 3.5 Access to Work for the Dole by job seeker characteristics year to end December 2005	Page 19
Section 4: Participation and Outcomes by Region	Page 20
Table 4.1 Commencements in labour market assistance by region: December 2005	Page 20
Table 4.2 Job Placements by region: December 2005	Page 21
Table 4.3 Regional labour market post assistance employment outcomes year to end December 2005	Page 22
Section 5: Impact on Income Support Recipients	Page 23
Figure 5.1 Number of income support recipients	Page 23
Figure 5.2 Three and six month off-benefit status of job seekers following assistance	Page 24
Technical Notes	Page 25

Time periods used in this report

The Department's Post Programme Monitoring (PPM) Survey measures outcomes achieved by job seekers three months after they exit labour market assistance. This report contains outcomes data for job seekers who exited assistance in the 12 months to 30 September 2005 and their post assistance outcomes achieved by 31 December 2005.

Intensive Support post assistance outcomes should not be confused with *paid interim* or *paid final* outcomes. Post assistance outcomes are *all* employment and education outcomes while paid outcomes relate to a subset of employment and education outcomes where Job Network members receive payment for outcomes.

Commencement and placement data, derived from DEWR and Centrelink administrative systems, relate to job seekers who were placed in a job or commenced labour market assistance between 1 January 2005 and 31 December 2005 and 1 January 2004 and 31 December 2004.

More information.....

For further information, please contact Michael Cameron (02) 6121 7240 or e-mail sarah.crooks@dewr.gov.au.

© Commonwealth of Australia

This work is copyright. Apart from any use as permitted under the *Copyright Act 1968*, no part may be reproduced by any process without prior written permission from the Commonwealth available from Aus Info. Requests and inquiries concerning reproduction and rights should be addressed to the Manager, Legislative Services, AusInfo, GPO Box 1920, Canberra ACT 2601.

Department of Employment and Workplace Relations
<http://www.workplace.gov.au/>

Changes to the Employment Services Market

The Active Participation Model

On 1 July 2003, significant changes were introduced to the employment services market. The *Active Participation Model* (announced in the 2002–03 Budget) provides on-going customised service to job seekers and has a number of innovative features, such as a Job Seeker Account to fund preparation of job seekers for work.

Participation in the Active Participation Model

On registration with Centrelink, each eligible job seeker is referred to a single Job Network member who will provide services to them while they remain eligible for assistance or get a job. This includes ongoing assistance during the early stages of a job seekers new job. Two services are delivered by all Job Network members under the *Active Participation Model*:

- Job Search Support; and
- Intensive Support.

Job Search Support services are available to all eligible job seekers immediately upon registration by Centrelink or a Job Network member and continue until the job seeker leaves employment services. On first contact with their Job Network member, job seekers have their vocational profile entered into the JobSearch database for daily matching against new job vacancies. Job seekers also have access to a range of other job search facilities such as touchscreens, computers and faxes as well as assistance in the preparation of job applications.

If an eligible job seeker has not found work within the first three months of Job Search Support, their Job Network member will arrange for them to participate in **Intensive Support**. Job search training is the first element of Intensive Support. It assists job seekers to obtain employment through individually tailored assistance that is designed to improve their job search skills, confidence and expand their job search networks.

After six months of unemployment (and periodically thereafter), most activity-tested job seekers will be required to fulfil a Mutual Obligation requirement. During these periods, job seekers will remain in Intensive Support and it will be the responsibility of their Job Network member to ensure that they continue to be actively engaged in job search activities and improving their job prospects.

Job seekers who have been unemployed for at least 12 months or are identified by Centrelink as being highly disadvantaged at registration will receive Intensive Support customised assistance. Over a six month period this service provides customised assistance to address individual barriers to employment and tailor the job seeker's efforts in looking for work. In Intensive Support customised assistance, a job seeker's Job Network member will have up to \$1,350 credited to their Job Seeker Account for the purchase of services and products to assist them to find employment.

Results for Active Participation Model assistance

Results for the employment services provided under the *Active Participation Model* have progressively become available. Reliable outcomes estimates cannot be produced until a sufficient number of clients have received assistance and subsequently been surveyed. Results for Job Placement and Intensive Support job search training have been published onwards from the June 2004 edition Labour Market Assistance Outcomes. Intensive Support customised assistance outcome results have been published in reports from September 2004 with outcomes for the Intensive Support stream of assistance reported since the December 2004 edition of Labour Market Assistance Outcomes.

In this report....

Outcomes for the Intensive Support stream are presented for both the '12 month' and '24 month' cohorts. As part of the sampling frame, clients are surveyed at 12 and 24 months participation in Intensive Support (see the technical notes for further discussion on the sampling frame for Intensive Support). This is the first quarter where outcomes for the '24 month' cohort are reported. With the inclusion of the '24 month' cohort, the positive outcome rate for Intensive Support has risen by around five percentage points.

Commencements for the programmes transferred to the Department of Employment and Workplace Relations will progressively be incorporated into the report. This quarter commencements in the Personal Support Programme (PSP) programme are reported.

Section 1: Labour Market Assistance Outcomes

Post assistance labour market outcomes

Table 1.1 shows labour market outcomes and further assistance levels of all job seekers three months after leaving the various types of employment assistance.

Employment outcomes under Intensive Support have risen considerably on the results reported in the September quarter report. This reflects the effect of the sampling and reporting methodology put in place. These are explained in Tables 1.3 and 1.4 as well as the technical notes at the end of the report.

Job seekers are categorised as employed, unemployed or not in the labour force. A proportion of these clients are also recorded as being in further assistance.

In editions of Labour Market Assistance Outcomes pre-June 2004, employment, unemployment, not in the labour force and further assistance outcomes were recorded as being mutually exclusive outcomes (ie. they added up to 100%).

As jobseekers are continuously in assistance under the *Active Participation Model*, clients in further assistance are surveyed and their responses are used to determine their labour market status.

Care should also be taken when comparing outcomes for current services with labour market programmes operating before the introduction of Job Network. The Technical Notes at the end of this report discuss these issues further.

Table 1.1: Post assistance¹ labour market outcomes year to end December 2005

Labour market assistance	Employed (%)	Unemployed (%)	Not in the Labour Force (%)	Further Assistance ² (%)	Exits (number)
Job Placement	71.3	23.4	5.3	na	99,914
Fully Job Network eligible (FJNE)	67.3	27.2	5.5	na	57,975
Job Search Support Only (JSSO)	77.5	17.7	4.9	na	41,939
Intensive Support	54.5	34.4	11.2	2.1	464,429
Intensive Support 12 months cohort ³	56.4	33.1	10.5	2.0	227,679
Intensive Support 24 months cohort ⁴	52.9	35.3	11.8	2.5	236,750
Intensive Support job search training	52.4	41.0	6.7	3.9	146,203
Intensive Support customised assistance	45.2	44.0	10.8	11.2	304,482
Non highly-disadvantaged	50.0	41.6	8.4	12.5	158,897
Highly disadvantaged	39.9	46.6	13.5	9.8	145,585
NEIS	82.9	11.3	5.8	2.3	6,305
Work for the Dole	32.9	57.0	10.1	37.7	82,771
Community Work	32.7	57.2	10.1	48.9	4,339
IEP – STEP	57.9	33.8	8.3	13.5	4,183
IEP - Wage Assistance	67.1	26.2	6.7	23.9	2,811
Indigenous Employment Centres	48.8	39.7	11.5	39.0	2,766
Transition to Work	35.1	40.5	24.4	10.4	11,711

1. Post assistance outcomes are measured three months after the job seeker ceases assistance and relate to job seekers who were in-scope for inclusion in the Intensive Support sample and job seekers who ceased Intensive Support customised assistance, Intensive Support job search training, New Enterprise Incentive Scheme (NEIS), Work for the Dole, Community Work, Transition to Work, Indigenous Employment Programme (IEP), Structured Training and Employment Projects (STEP), IEP Wage Assistance or Indigenous Employment Centres or achieved an eligible Job Network placement between 1 October 2004 and 30 September 2005. Employment outcomes exclude Indigenous job seekers who return to Community Development Employment Projects (CDEP) after leaving labour market assistance.
2. Further assistance includes commencements in DEWR funded labour market assistance. Job seekers who do not achieve an employment outcome are treated as either unemployed or not in the labour force.
3. The Intensive Support 12 month cohort relates to clients who commenced Intensive Support between 1 October 2003 and 30 September 2004 and left Intensive Support or were receiving Intensive Support assistance for 12 months between 1 October 2004 and 30 September 2005 and outcomes achieved by 31 December 2005.
4. The Intensive Support 24 month cohort relates to clients who commenced Intensive Support between 1 July 2003 and 30 September 2003 and left Intensive Support or were receiving Intensive Support assistance for 24 months between 1 October 2004 and 30 September 2005 and outcomes achieved by 31 December 2005.

Source: The Post Programme Monitoring Survey conducted three months after job seekers cease assistance.

Post assistance employment and positive outcomes

Table 1.2 shows job seekers' shares of full-time and part-time employment, education/training and positive outcomes three months after leaving different types of labour market assistance.

Education and training outcomes include job seekers who are studying at a secondary school or college, TAFE, business college or university three months after ceasing labour market assistance.

Positive outcome rates for Intensive Support clients are up around five percentage points on those reported in the September quarter report. This is a result of the sampling methodology put in place for Intensive Support. These are outlined in detail in Tables 1.3 and 1.4.

Most of the growth in positive outcome for Intensive Support has been a result of increases in full-time employment.

Table 1.2: Post assistance¹ employment and positive outcomes year to end December 2005

Labour market assistance	Full-time Employed (%)	Part-time Employed (%)	Total Employed (%)	Education & Training (%)	Positive Outcomes ² (%)	Exits (number)
Job Placement	45.4	25.9	71.3	12.9	75.0	99,914
Fully Job Network eligible (FJNE)	41.6	25.7	67.3	12.5	71.2	57,975
Job Search Support Only (JSSO)	51.3	26.2	77.5	13.6	80.9	41,939
Intensive Support	27.6	26.9	54.5	11.1	61.3	464,429
Intensive Support 12 months cohort ³	29.0	27.5	56.4	13.3	64.5	227,679
Intensive Support 24 months cohort ⁴	26.5	26.5	52.9	9.0	58.4	236,750
Intensive Support job search training	24.3	28.0	52.4	15.0	61.6	146,203
Intensive Support customised assistance	16.7	28.6	45.2	12.0	54.4	304,482
Non highly-disadvantaged	18.4	31.6	50.0	11.0	57.9	158,897
Highly disadvantaged	14.8	25.1	39.9	13.1	50.6	145,585
NEIS	50.4	32.5	82.9	8.7	85.0	6,305
Work for the Dole	15.7	17.1	32.9	11.9	41.9	82,771
Community Work	10.2	22.5	32.7	16.2	44.2	4,339
IEP - STEP	39.2	18.6	57.9	26.1	68.7	4,183
IEP - Wage Assistance	48.7	18.4	67.1	21.2	69.7	2,811
Indigenous Employment Centres	32.5	16.4	48.8	24.3	59.4	2,766
Transition to Work	5.7	29.4	35.1	30.2	57.1	11,711

1. Post assistance outcomes are measured three months after the job seeker ceases assistance and relate to job seekers who were in-scope for inclusion in the Intensive Support sample and job seekers who ceased Intensive Support customised assistance, Intensive Support job search training, New Enterprise Incentive Scheme (NEIS), Work for the Dole, Community Work, Transition to Work, Indigenous Employment Programme (IEP), Structured Training and Employment Projects (STEP), IEP Wage Assistance or Indigenous Employment Centres or achieved an eligible Job Network placement between 1 October 2004 and 30 September 2005.
2. Positive outcomes include employment and education/training outcomes. Positive outcomes are less than the sum of employment and education/training outcomes because some job seekers achieve both an employment and an education outcome. Positive and employment outcomes exclude Indigenous job seekers who return to Community Development Employment Projects (CDEP) after leaving labour market assistance.
3. The Intensive Support 12 month cohort relates to clients who commenced Intensive Support between 1 October 2003 and 30 September 2004 and left Intensive Support or were receiving Intensive Support assistance for 12 months between 1 October 2004 and 30 September 2005 and outcomes achieved by 31 December 2005.
4. The Intensive Support 24 month cohort relates to clients who commenced Intensive Support between 1 July 2003 and 30 September 2003 and left Intensive Support or were receiving Intensive Support assistance for 24 months between 1 October 2004 and 30 September 2005 and outcomes achieved by 31 December 2005.

Source: The Post Programme Monitoring Survey conducted three months after job seekers cease assistance.

Intensive Support

Table 1.3 reports the outcomes for the 12 month Intensive Support population. These job seekers commenced assistance between 1 October 2003 and 30 September 2004 and became in-scope for survey between 1 October 2004 and 30 September 2005 and outcomes achieved three months later, up to 31 December 2005.

As evident by the in-scope commencement dates, the stock of unemployed job seekers at the start of the APM are not included in this sample (i.e. it reflects

the flow of job seekers into Intensive Support since the start of the APM). This provides an assessment of the performance of Intensive Support for clients during their first year of assistance.

It is evident that, overall, Intensive Support is performing strongly, with over half of the inflow of clients into Intensive Support in some form of employment within a year of commencing Intensive Support assistance.

Table 1.3: Intensive Support 12 month cohort: Post assistance outcomes year to end December 2005¹

Job seeker characteristics	Employment			Education & Training (%)	Positive Outcomes ² (%)	In-scope population ³ (number)
	Full-time (%)	Part-time (%)	Total Employed (%)			
Age Group (years)						
15 to 20	30.8	27.0	57.8	19.0	68.3	50,148
21 to 24	36.4	27.7	64.1	15.7	72.9	37,053
25 to 34	33.9	25.9	59.8	12.5	67.0	52,752
35 to 49	26.8	28.8	55.6	12.5	63.9	58,926
50 or more	20.7	27.8	48.5	8.8	54.4	28,800
Duration on income support (months)						
0 to less than 6	34.3	27.9	62.2	13.2	69.6	137,115
6 to less than 12	24.2	26.6	50.8	14.8	61.6	15,341
12 to less than 24	19.6	26.2	45.9	13.5	55.0	16,977
24 to less than 36	19.2	26.7	45.9	14.5	55.8	10,944
36 or more	12.7	26.7	39.4	12.2	48.3	30,018
Educational attainment						
Less than Year 10	17.3	22.3	39.6	10.2	47.8	36,718
Year 10 or 11	25.7	26.0	51.7	10.5	58.7	69,151
Year 12	32.2	29.3	61.5	18.6	72.0	41,190
Post Secondary	35.8	29.4	65.2	13.5	72.5	72,587
Unknown	19.6	29.9	49.6	17.1	60.8	8,033
Gender						
Males	32.8	22.5	55.2	10.6	61.7	137,287
Females	24.2	33.7	57.9	16.6	67.8	90,392
Equity Groups⁴						
Disability	13.8	24.9	38.7	10.9	47.0	16,990
Indigenous	19.7	16.0	35.8	10.6	43.2	22,620
CALD ⁵	26.3	24.4	50.7	19.2	65.2	36,025
Sole Parents	17.4	35.7	53.1	14.6	62.9	12,759
Total	29.0	27.5	56.4	13.3	64.5	227,679

1. Job seekers who commenced Intensive Support between 1 October 2003 and 30 September 2004 and left Intensive Support or were receiving Intensive Support assistance for 12 months between 1 October 2004 and 30 September 2005 and outcomes achieved by 31 December 2005.

2. Positive outcomes include employment and education/training outcomes. Positive outcomes are less than the sum of employment and education/training outcomes because some job seekers achieve both an employment and an education/training outcome. Positive and employment outcomes exclude Indigenous job seekers who return to Community Development Employment Projects (CDEP) after leaving labour market assistance.

3. See the technical notes at the end of the report for a definition of the in-scope population.

4. Equity groups are not mutually exclusive.

5. People from Culturally and Linguistically Diverse backgrounds from other than main English Speaking countries.

Source: The Post Programme Monitoring Survey conducted three months after job seekers cease assistance.

Intensive Support

Table 1.4 reports the outcomes for the 24 month Intensive Support population. These job seekers commenced assistance between 1 July 2003 and 30 September 2003 and became in-scope for survey between 1 October 2004 and 30 September 2005 and outcomes achieved three months later, up to 31 December 2005.

From the in-scope commencement dates, it is evident that this population contains the stock population at the commencement of the APM and as expected they achieved lower outcomes than the flow population.

They have however, also achieved higher outcomes than was reported for the Intensive Support population in previous quarters. The higher outcomes achieved by the 24 month sample, is because the in-scope population has had an additional twelve months to achieve an outcome. In previous quarters the job seekers outcome achieved at 12 months participation was recorded. Specifically, some of the clients that were still in assistance at 12 months participation, however, would have achieved an employment or education outcome before they reached 24 months participation.

Table 1.4: Intensive Support 24 month cohort: Post assistance outcomes year to end December 2005¹

Job seeker characteristics	Employment			Education & Training (%)	Positive Outcomes ² (%)	In-scope population ³ (number)
	Full-time (%)	Part-time (%)	Total Employed (%)			
Age Group (years)						
15 to 20	32.8	23.9	56.8	14.8	64.8	35,331
21 to 24	33.3	26.2	59.5	11.4	66.0	34,255
25 to 34	30.2	26.4	56.6	10.2	62.7	54,609
35 to 49	25.0	28.7	53.8	8.2	58.8	72,862
50 or more	18.6	24.8	43.4	6.0	48.0	39,693
Duration on income support (months)						
0 to less than 6	34.2	26.4	60.6	9.8	65.9	80,562
6 to less than 12	27.5	27.7	55.1	10.1	61.0	24,707
12 to less than 24	26.3	27.8	54.1	9.2	60.4	35,392
24 to less than 36	23.0	26.2	49.2	7.8	54.6	20,748
36 or more	16.7	25.9	42.6	7.9	48.1	64,945
Educational attainment						
Less than Year 10	19.3	21.8	41.1	6.1	45.9	46,608
Year 10 or 11	25.1	27.4	52.4	6.8	56.8	84,851
Year 12	30.2	28.9	59.1	12.7	66.4	43,241
Post Secondary	30.4	28.1	58.5	11.6	65.0	51,973
Unknown	34.0	22.7	56.7	8.8	62.7	10,077
Gender						
Males	28.9	21.8	50.7	7.2	55.6	160,470
Females	22.2	35.2	57.3	12.2	64.1	76,280
Equity Groups⁴						
Disability	18.4	21.2	39.6	8.3	45.9	21,937
Indigenous	20.5	15.7	36.2	6.3	40.0	14,327
CALD ⁵	24.4	24.3	48.7	11.9	57.6	39,705
Sole Parents	22.3	38.4	60.7	9.6	66.0	9,768
Total	26.5	26.5	52.9	9.0	58.4	236,750

1. Job seekers who commenced Intensive Support between 1 July 2003 and 30 September 2003 and left Intensive Support or were receiving Intensive Support assistance for 24 months between 1 October 2004 and 30 September 2005 and outcomes achieved by 31 December 2005.

2. Positive outcomes include employment and education/training outcomes. Positive outcomes are less than the sum of employment and education/training outcomes because some job seekers achieve both an employment and an education/training outcome. Positive and employment outcomes exclude Indigenous job seekers who return to Community Development Employment Projects (CDEP) after leaving labour market assistance.

3. See the technical notes at the end of the report for a definition of the in-scope population.

4. Equity groups are not mutually exclusive.

5. People from Culturally and Linguistically Diverse backgrounds from other than main English Speaking countries.

Source: The Post Programme Monitoring Survey conducted three months after job seekers cease assistance.

Intensive Support

Table 1.5 reports the post assistance outcomes achieved for both the 12 and 24 month in-scope population for Intensive Support. Detailed information about the 12 and 24 months cohorts are provided in the previous two tables.

Outcome levels for the total Intensive Support population are around five percentage points higher

than reported in the September quarter. This is a result of the inclusion of the '24 month' cohort in the population used to calculate Intensive Support outcomes.

Most encouragingly, most of the growth in employment outcomes achieved appears to be in the area of full-time employment.

Table 1.5: Intensive Support Combined samples: Post assistance outcomes year to end December 2005¹

Job seeker characteristics	Employment			Education & Training (%)	Positive Outcomes ² (%)	In-scope population ³ (number)
	Full-time (%)	Part-time (%)	Total Employed (%)			
Age Group (years)						
15 to 20	31.6	25.8	57.4	17.4	67.0	85,479
21 to 24	34.8	27.0	61.8	13.7	69.5	71,308
25 to 34	32.0	26.0	58.0	11.3	64.7	107,361
35 to 49	25.7	28.7	54.4	10.2	60.9	131,788
50 or more	19.4	26.0	45.4	7.3	50.7	68,493
Duration on income support (months)						
0 to less than 6	34.0	27.3	61.3	12.0	68.1	217,677
6 to less than 12	26.3	27.3	53.6	11.9	61.3	40,048
12 to less than 24	24.1	27.3	51.5	10.6	58.7	52,369
24 to less than 36	21.7	26.3	48.0	10.2	55.0	31,692
36 or more	15.5	26.1	41.5	9.3	48.2	94,963
Educational attainment						
Less than Year 10	18.4	22.0	40.4	7.9	46.6	83,326
Year 10 or 11	25.3	26.8	52.0	8.5	57.5	154,002
Year 12	31.0	29.1	60.1	15.7	69.0	84,431
Post Secondary	33.5	28.8	62.3	12.7	69.2	124,560
Unknown	27.0	26.0	53.1	12.8	61.5	18,110
Gender						
Males	30.6	22.0	52.6	8.8	58.3	297,757
Females	23.2	34.3	57.5	14.6	66.0	166,672
Equity Groups⁴						
Disability	16.3	22.8	39.1	9.4	46.3	38,927
Indigenous	20.0	15.9	35.9	9.0	41.9	36,947
CALD ⁵	25.1	24.3	49.4	15.6	61.1	75,730
Sole Parents	19.4	36.7	56.1	12.5	64.0	22,527
Total	27.6	26.9	54.5	11.1	61.3	464,429

1. Job seekers who commenced Intensive Support between 1 July 2003 and 30 September 2004 and left Intensive Support or were receiving Intensive Support assistance for 12 or 24 months between 1 October 2004 and 30 September 2005 and outcomes achieved by 31 December 2005. The commencement period is limited to ensure that only those participants that could have reached 12 or 24 months participation in Intensive Support are included in the in-scope sample.

2. Positive outcomes include employment and education/training outcomes. Positive outcomes are less than the sum of employment and education/training outcomes because some job seekers achieve both an employment and an education/training outcome. Positive and employment outcomes exclude Indigenous job seekers who return to Community Development Employment Projects (CDEP) after leaving labour market assistance.

3. See the technical notes at the end of the report for a definition of the in-scope population.

4. Equity groups are not mutually exclusive.

5. People from Culturally and Linguistically Diverse backgrounds from other than main English Speaking countries.

Source: The Post Programme Monitoring Survey conducted three months after job seekers cease assistance

Intensive Support customised assistance

Table 1.6 shows the post assistance outcomes achieved by those who left Intensive Support customised assistance between 1 October 2004 and 30 September 2005 and outcomes achieved three months later, up to 31 December 2005.

Over half of those clients identified as being highly disadvantaged are in employment and/or education three months after completing their period of customised assistance. This is almost a five percentage point increase on outcomes achieved at the start of the APM. This highlights the success of the learning made to date under the APM.

Table 1.6: Intensive Support customised assistance: Post assistance outcomes year to end December 2005¹

Job seeker characteristics	Employment			Education & Training (%)	Positive Outcomes ² (%)	Exits (number)
	Full-time (%)	Part-time (%)	Total Employed (%)			
Disadvantage status						
Non-highly disadvantaged ³	18.4	31.6	50.0	11.0	57.9	158,897
Highly disadvantaged ⁴	14.8	25.1	39.9	13.1	50.6	145,585
Age Group (years)						
15 to 20	20.1	25.3	45.4	15.7	57.3	53,872
21 to 24	20.4	28.7	49.1	16.3	60.8	37,874
25 to 34	19.2	28.0	47.3	12.7	56.7	63,726
35 to 49	16.5	30.9	47.4	11.9	56.4	90,691
50 or more	11.6	28.3	39.9	9.2	47.3	58,319
Duration on income support (months)						
0 to less than 6	22.0	23.6	45.5	14.9	55.9	66,815
6 to less than 12	19.9	30.5	50.5	14.4	60.2	41,786
12 to less than 24	16.1	27.4	43.5	13.9	53.4	58,840
24 to less than 36	14.6	27.2	41.8	12.7	50.7	31,598
36 or more	10.1	27.2	37.3	10.8	45.4	98,862
Educational attainment						
Less than Year 10	12.5	23.5	35.9	9.8	44.4	73,280
Year 10 or 11	16.3	28.2	44.6	9.7	52.0	107,585
Year 12	19.1	30.7	49.8	15.3	61.5	45,422
Post Secondary	19.4	32.3	51.8	14.7	62.4	75,105
Unknown	21.8	30.2	52.1	14.3	60.5	3,090
Gender						
Males	18.3	24.6	42.9	9.6	50.6	185,589
Females	14.3	34.5	48.8	15.5	60.1	118,893
Equity Groups⁵						
Disability	12.3	26.9	39.2	10.2	47.4	37,811
Indigenous	16.5	17.9	34.4	11.8	43.8	42,972
CALD ⁶	16.3	25.7	42.0	18.4	57.7	49,157
Sole Parents	17.1	35.3	52.3	14.7	63.0	28,144
Total	16.7	28.6	45.2	12.0	54.4	304,482

1. Job seekers who left Intensive Support customised assistance between 1 October 2004 and 30 September 2005 and outcomes achieved by 31 December 2005.

2. Positive outcomes include employment and education/training outcomes. Positive outcomes are less than the sum of employment and education/training outcomes because some job seekers achieve both an employment and an education/training outcome. Positive and employment outcomes exclude Indigenous job seekers who return to Community Development Employment Projects (CDEP) after leaving labour market assistance.

3. Job seeker who had a JSCI score of 22 or less and would have access to customised assistance at 12 months unemployment.

4. Job seeker who had a JSCI score of 23 or above at time of registration and had access to customised assistance immediately.

5. Equity groups are not mutually exclusive.

6. People from Culturally and Linguistically Diverse backgrounds from other than main English Speaking countries.

Source: The Post Programme Monitoring Survey conducted three months after job seekers cease assistance.

Intensive Support job search training

Table 1.7 shows the post assistance outcomes achieved by those who left the Intensive Support job search training between 1 October 2004 and 30 September 2005 and outcomes achieved three months later, up to 31 December 2005.

Post assistance outcomes for Intensive Support job search training participants by duration on allowance are not provided because almost all job seekers will access job search training immediately on their entry to the Intensive Support stream of assistance – which

usually occurs at the three month mark of unemployment.

Post-assistance outcomes for Intensive Support job search training remain strong. With the exception of clients aged 50 or more, over half of the participants are employed three months after completing their period of Intensive Support job search training. Similarly over half of both males and females that received Intensive Support job search training assistance were employed three months later.

Table 1.7: Intensive Support job search training: Post assistance outcomes year to end December 2005¹

Job seeker characteristics	Employment			Education & Training (%)	Positive Outcomes ² (%)	Exits (number)
	Full-time (%)	Part-time (%)	Total Employed (%)			
Age Group (years)						
15 to 20	23.7	27.4	51.1	20.4	63.1	40,019
21 to 24	29.1	28.8	57.9	17.8	68.2	30,649
25 to 34	26.0	28.3	54.4	13.5	62.2	33,457
35 to 49	23.1	28.8	51.9	12.1	60.2	29,282
50 or more	19.3	27.6	46.9	8.9	53.0	12,796
Educational attainment						
Less than Year 10	19.2	23.2	42.5	9.0	49.3	11,692
Year 10 or 11	21.4	24.7	46.1	12.2	54.3	40,342
Year 12	24.6	29.9	54.5	19.9	65.9	33,363
Post Secondary	26.8	29.7	56.5	15.1	65.5	60,404
Unknown	18.7	29.8	48.5	17.9	62.4	402
Gender						
Males	27.4	23.1	50.5	12.8	58.8	87,456
Females	20.6	34.4	55.0	17.8	65.3	58,747
Equity Groups³						
Disability	20.8	25.3	46.1	13.1	55.3	3,494
Indigenous	31.0	17.6	48.6	10.5	56.8	2,223
CALD ⁴	22.0	24.8	46.9	18.2	59.8	20,749
Sole Parents	14.1	38.8	52.9	14.9	62.3	5,792
Total	24.3	28.0	52.4	15.0	61.6	146,203

1. Job seekers who left Intensive Support job search training placements between 1 October 2004 and 30 September 2005 and outcomes achieved by 31 December 2005.
2. Positive outcomes include employment and education/training outcomes. Positive outcomes are less than the sum of employment and education/training outcomes because some job seekers achieve both an employment and an education/training outcome. Positive and employment outcomes exclude Indigenous job seekers who return to Community Development Employment Projects (CDEP) after leaving labour market assistance.
3. Equity groups are not mutually exclusive.
4. People from Culturally and Linguistically Diverse backgrounds from other than main English Speaking countries.

Source: The Post Programme Monitoring Survey conducted three months after job seekers cease assistance.

Job Placement

Table 1.8 shows the post assistance outcomes achieved by those who achieved a Job Placement between 1 October 2004 and 30 September 2005 and outcomes achieved three months later, up to 31 December 2005.

Post-assistance outcomes for Job Placement have sustained their high levels, with around three-quarters of participants in employment and/or education three months after their original job placement.

Table 1.8: Job Placements: Post assistance outcomes year to end December 2005¹

Job seeker characteristics	Employment			Education & Training (%)	Positive Outcomes ² (%)	Exits (number)
	Full-time (%)	Part-time (%)	Total Employed (%)			
Age Group (years)						
15 to 20	48.0	22.9	70.9	23.5	77.0	28,976
21 to 24	45.0	23.5	68.5	14.6	73.2	16,576
25 to 34	45.2	26.0	71.1	10.0	74.3	24,299
35 to 49	44.5	28.3	72.8	7.0	75.0	22,747
50 or more	41.8	30.6	72.4	4.1	74.0	7,316
Duration on income support (months)³						
0 to less than 6	45.8	26.5	72.3	13.8	76.4	33,026
6 to less than 12	40.0	23.8	63.8	13.4	68.1	9,048
12 to less than 24	36.3	27.3	63.6	11.9	67.5	7,457
24 to less than 36	33.5	20.9	54.4	7.2	57.3	3,158
36 or more	23.3	25.2	48.5	4.5	50.3	5,286
Educational attainment³						
Less than Year 10	37.3	19.3	56.6	6.4	60.5	7,231
Year 10 or 11	39.4	23.9	63.3	8.9	66.1	19,587
Year 12	45.1	24.6	69.7	19.0	75.7	12,281
Post Secondary	42.6	29.9	72.5	13.3	75.9	17,481
Unknown	43.0	30.3	73.3	16.8	78.6	1,062
Gender						
Males	51.5	18.0	69.5	10.9	72.6	63,653
Females	37.0	36.8	73.9	15.7	78.4	36,261
Equity Groups³						
Disability	26.5	30.0	56.5	8.6	60.5	5,032
Indigenous	31.6	22.1	53.7	8.2	57.2	2,647
CALD ⁴	37.9	26.5	64.4	14.8	71.7	5,725
Sole Parents	23.7	46.6	70.3	15.1	75.8	3,418
Job Network eligible (FJNE)⁵	41.6	25.7	67.3	12.5	71.2	57,975
Job Search Support Only (JSSO)⁶	51.3	26.2	77.5	13.6	80.9	41,939
Total	45.4	25.9	71.3	12.9	75.0	99,914

1. Job seekers who were placed in a Job Network eligible job between 1 October 2004 and 30 September 2005 and outcomes achieved by 31 December 2005. For job seekers who achieved a Job Placement within three months of leaving labour market assistance such as Intensive Support job search training, Intensive Support customised assistance and Work for the Dole, the outcome is excluded from Job Placement but included under the programme or service they participated in. Outcomes estimates are based on a 25% sample of job seekers.
2. Positive outcomes include employment and education/training outcomes. Positive outcomes are less than the sum of employment and education/training outcomes because some job seekers achieve both an employment and an education/training outcome. Positive and employment outcomes exclude Indigenous job seekers who return to Community Development Employment Projects (CDEP) after leaving labour market assistance.
3. Outcomes refer to Fully Job Network Eligible (FJNE) job seekers only as educational attainment and equity group details are not recorded for Job Search Support Only (JSSO) and JSSO job seekers are not on income support. Equity groups are not mutually exclusive.
4. People from Culturally and Linguistically Diverse backgrounds from other than main English Speaking countries.
5. Includes Fully Job Network Eligible (FJNE) job seekers who may be eligible for other Job Network services.
6. Includes Job Search Support Only (JSSO) job seekers who are only eligible for Job Search Support services.

Source: The Post Programme Monitoring Survey conducted three months after job seekers cease assistance.

New Enterprise Incentive Scheme

Table 1.9 shows the post assistance outcomes achieved by those who left the New Enterprise Incentive Scheme (NEIS) between 1 October 2004 and 30 September 2005 and outcomes achieved three months later, up to 31 December 2005.

Traditionally NEIS has always experienced higher outcomes compared to other types of labour market assistance. This is due in part to the careful selection

of viable businesses by NEIS providers prior to the commencement in assistance, as well as the characteristics of job seekers involved.

Post-assistance outcomes for NEIS continue to remain strong and well above stated targets. Unlike some of the other programmes there is not the divergence in outcomes achieved among the different client types. This goes to the careful selection of viable businesses prior to selection in the programme.

Table 1.9: New Enterprise Incentive Scheme: Post assistance outcomes year to end December 2005¹

Job seeker characteristics	Employment			Education & Training (%)	Positive Outcomes ³ (%)	Exits (number)
	Self Employed ² (%)	Employed (%)	Total Employed (%)			
Age Group (years)						
15 to 20	na	na	na	na	na	na
21 to 24	67.8	18.0	85.8	13.1	89.8	630
25 to 34	72.7	13.3	85.9	9.1	87.6	2,031
35 to 49	69.1	12.6	81.7	8.5	83.8	2,571
50 or more	66.7	11.3	78.0	5.9	80.1	955
Duration on income support (months)						
0 to less than 6	73.5	14.5	88.0	10.8	90.4	2,918
6 to less than 12	68.4	14.3	82.7	8.0	83.7	1,240
12 to less than 24	64.6	11.1	75.7	5.2	77.5	813
24 to less than 36	66.7	9.4	76.2	10.6	81.2	432
36 or more	59.5	11.8	71.4	4.1	72.7	794
Educational attainment						
Less than Year 10	64.4	4.7	69.1	4.8	70.4	268
Year 10 or 11	65.4	11.6	77.0	4.4	78.3	981
Year 12	70.6	12.7	83.4	9.8	85.6	875
Post Secondary	70.8	14.8	85.6	9.7	87.7	3,625
Unknown	68.5	12.9	81.4	9.5	85.4	556
Gender						
Males	71.7	13.2	84.9	7.1	86.4	3,571
Females	66.9	13.5	80.3	10.6	83.0	2,734
Equity Groups⁴						
Disability	64.0	13.9	77.9	2.3	78.9	510
Indigenous	na	na	na	na	na	na
CALD ⁵	68.5	12.9	81.4	8.4	84.3	1,009
Sole Parents	58.1	23.0	81.1	12.2	84.4	394
Total	69.6	13.3	82.9	8.7	85.0	6,305

1. Job seekers who left NEIS placements between 1 October 2004 and 30 September 2005 and outcomes achieved by 31 December 2005.

2. Includes a small proportion of participants who are self employed but in a business not set up under NEIS.

3. Positive outcomes include employment and education/training outcomes. Positive outcomes are less than the sum of employment and education/training outcomes because some job seekers achieve both an employment and an education/training outcome. Positive and employment outcomes exclude Indigenous job seekers who return to Community Development Employment Projects (CDEP) after leaving labour market assistance.

4. Equity groups are not mutually exclusive.

5. People from Culturally and Linguistically Diverse backgrounds from other than main English Speaking countries.

na. Not available as the estimate is based on a small number of known outcomes.

Source: The Post Programme Monitoring Survey conducted three months after job seekers cease assistance.

Work for the Dole

The Work for the Dole (WfD) Programme aims to develop the work habits of participants through involving them in quality projects that are of value to the community. Employment outcomes are not part of the programme's immediate objectives but are included here as they demonstrate the success of work experience and increased job search activity. Outcomes relate to WfD participants referred to Community Work Coordinators (CWC).

Job seekers are required to participate in WfD for up to six months over a twelve month period. This

means that job seekers can participate in a number of projects with different CWC's before completing their placement. For the purposes of PPM, job seekers are surveyed whenever they have a break between CWC placements of more than 3 months since their last CWC placement in a twelve month period. Job seekers aged 50 years or more who participate in Work for the Dole are volunteers.

It should be noted that outcomes levels may change under the APM from pre-APM levels due to changes in the PPM survey methodology. See the technical notes for more information.

Table 1.10: Work for the Dole: Post assistance outcomes year to end December 2005¹

Job seeker characteristics	Employment			Education & Training (%)	Positive Outcomes ² (%)	Exits (number)
	Full-time (%)	Part-time (%)	Total Employed (%)			
Age Group (years)						
15 to 20	16.9	19.2	36.2	15.9	48.7	12,735
21 to 24	21.6	18.3	39.9	13.8	49.5	18,258
25 to 34	15.8	17.3	33.1	11.4	42.2	24,518
35 to 49	13.5	16.2	29.6	9.8	37.1	25,357
50 or more	6.7	14.2	20.9	14.2	31.7	1,903
Duration on income support (months)						
0 to less than 6	25.3	20.4	45.7	14.2	56.0	10,161
6 to less than 12	21.2	19.1	40.4	15.2	51.2	18,193
12 to less than 24	16.5	15.7	32.2	12.6	42.2	12,842
24 to less than 36	12.7	20.0	32.6	12.6	42.1	11,279
36 or more	10.3	14.7	25.0	9.0	32.3	30,228
Educational attainment³						
Less than Year 10	11.5	12.2	23.8	7.4	30.1	15,365
Year 10 or 11	15.1	16.4	31.5	8.3	38.1	30,616
Year 12	16.0	19.8	35.8	16.0	47.7	14,977
Post Secondary	19.0	19.4	38.4	15.9	49.9	21,525
Unknown	17.3	15.5	32.8	19.7	47.7	288
Gender						
Males	18.0	14.0	31.9	9.5	39.3	58,916
Females	11.3	23.8	35.0	17.0	47.6	23,855
Equity Groups³						
Disability	10.8	16.9	27.7	9.4	35.0	6,482
Indigenous	10.8	8.5	19.3	9.9	27.1	5,339
CALD ⁴	15.0	17.6	32.6	16.3	44.6	10,421
Sole Parents	9.0	18.1	27.1	19.0	42.1	1,642
Total	15.7	17.1	32.9	11.9	41.9	82,771

1. Job seekers who left a Work for the Dole project between 1 October 2004 and 30 September 2005 and outcomes achieved by 31 December 2005.

2. Positive outcomes include employment and education/training outcomes. Positive outcomes are less than the sum of employment and education/training outcomes because some job seekers achieve both an employment and an education/training outcome. Positive and employment outcomes exclude Indigenous job seekers who return to Community Development Employment Projects (CDEP) after leaving labour market assistance.

3. Equity groups are not mutually exclusive.

4. People from Culturally and Linguistically Diverse backgrounds from other than main English Speaking countries.

Source: The Post Programme Monitoring Survey conducted three months after job seekers cease assistance.

Section 2: Trends in outcomes for Labour Market Assistance

An important measure of the effectiveness of employment assistance includes the long-term trends in outcomes. It provides an assessment of whether over the period of operation of an intervention the service providers have developed effective servicing strategies.

These outcomes can be influenced by a range of exogenous factors such as the strength of the labour market, the distribution of available jobs and the position of the economy within the economic cycle.

Similarly it would be expected that in the period following the introduction of a new intervention, outcomes will increase at a faster rate than interventions that have been in place for a longer period of time, as effective servicing strategies are developed.

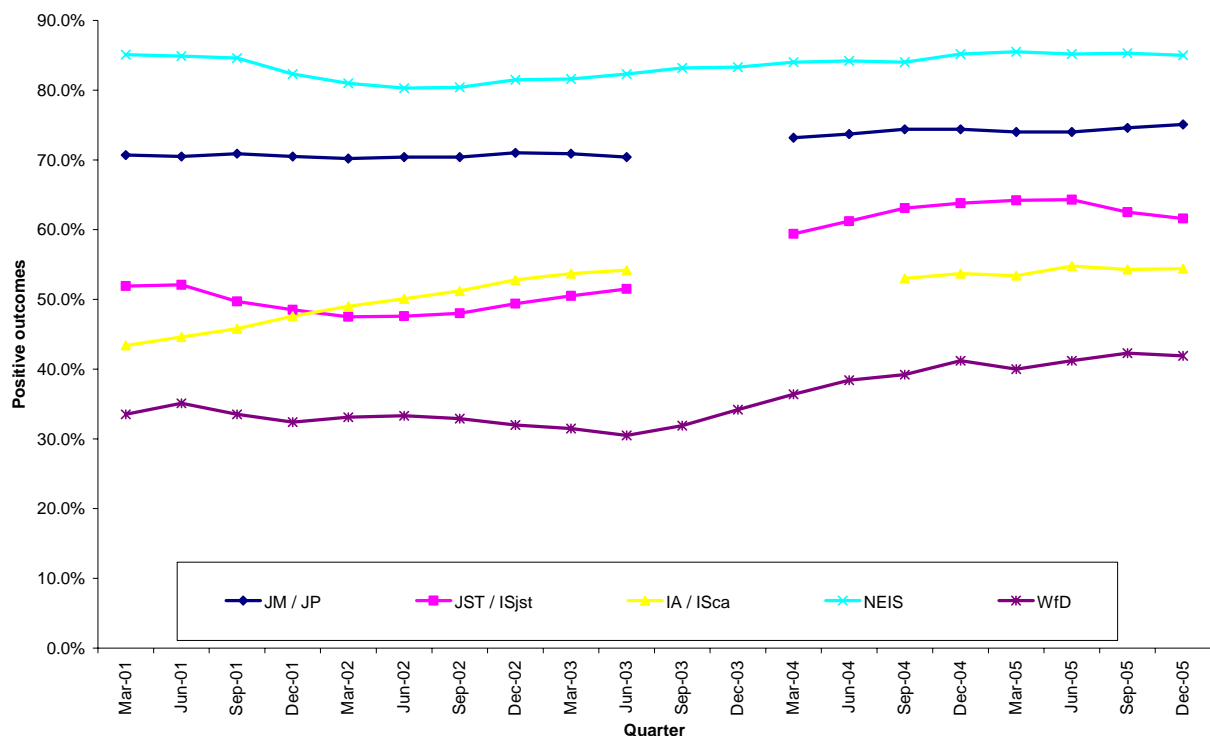
Figure 2.1 below provides positive outcome results for the main employment services provided over the

last five years (from March 2001). For those interventions superseded by *Active Participation Model* assistance, the services they superseded are also included. There is a break in the series of between three and five quarter during the transition from ESC2 to ESC3 for these interventions. This was due to the fact that there were insufficient PPM survey responses to provide for robust outcome estimates.

It can be seen that outcomes for the suite of Job Network and Work for the Dole services have generally continued to trend up from the outcomes achieved under ESC2.

Some of the growth can be attributed to changes to the methodology used for the Post Programme Monitoring survey. See the technical notes at the end of this report for further information.

Figure 2.1: Positive outcome trends for Job Network and Work for the Dole services¹



1. Positive outcomes for: Job Matching/Job Placement (JM/JP); Job Search Training/Intensive Support job search training (JST/ISjst); Intensive Assistance/Intensive Support customised assistance (IA/ISca); New Enterprise Incentive Scheme (NEIS); and Work for the Dole (WfD) for Post Programme Monitoring outcomes from March 2001 to December 2005. Positive outcomes include employment and education/training outcomes. Positive outcomes exclude Indigenous job seekers who return to Community Development Employment Projects (CDEP) after leaving labour market assistance.

Section 3: Access to and Participation in Labour Market Assistance

Type of labour market assistance

Table 3.1 shows the commencements in employment assistance for the year to end December 2004 and the year to end December 2005.

This is the first quarter where commencements for programmes transferred to the Department of Employment and Workplace Relations under recent Machinery of Government changes have been included. In this quarter, commencements in the Personal Support Programme (PSP) are reported.

It is evident that PSP is one of the largest complementary programmes delivered, with only

Work for the Dole having higher commencements in assistance over the last two years.

Commencements in both the first and second phase of Intensive Support customised assistance are presented. It is evident that whilst commencements in the first phase of ISca assistance are relatively stable, commencements in the second phase have increased. This reflects the growing length of time that the APM has been in place. It is of note that the overall commencements in Intensive Support have fallen highlighting the general strength of the labour market.

Table 3.1: Participation by type of labour market assistance in each of the past two years¹

Labour market assistance	Year to end December 2004	Year to end December 2005
	Commencements (number)	Commencements (number)
Job Search Support ²	570,884	510,766
Intensive Support ³	413,300	371,453
job search training	157,851	123,638
first customised assistance (ISca1)	255,921	208,552
second customised assistance (ISca2)	35,117	90,409
Job Placement	630,237	657,024
NEIS	6,632	6,345
Work for the Dole	79,297	84,946
Community Work Placements	4,418	3,568
IEP – STEP	4,895	3,144
IEP - Wage Assistance	2,946	2,725
Indigenous Employment Centres	2,671	2,968
Personal Support Programme	24,399	25,885
Transition to Work	12,502	11,696

1. Commencement or placement of job seekers in labour market assistance funded by DEWR for the two years of 1 January 2004 to 31 December 2004 and 1 January 2005 to 31 December 2005.

2. Job seekers with a registered Vocational Profile in the year up to 31 December 2005.

3. Job seekers who commenced any phase of assistance within the Intensive Support stream.

Source: DEWR administrative systems

Participation in Job Network assistance

Access to services and programmes by job seekers with different characteristics will depend on their eligibility and on their assessed capacity to benefit from the assistance provided.

Job seekers with particular characteristics may be under-represented in some types of assistance but over-represented in others. Hence, it is important to look at all types of assistance in assessing equity of assistance.

Table 3.2 shows, for the range of Job Network services, the job seeker characteristics of those that received assistance in the year up to 31 December

2005. Also provided is the demographic distribution of the Newstart and Youth Allowance (other) population at 31 December 2005.

Participation in employment assistance, by a job seekers' highest level of completed education, broadly matches their proportion of the Newstart/Youth Allowance (other) population.

The proportion of short-term unemployed job seekers (i.e. on income support for less than six months) in Job Search Support is influenced by the proportion of Job Search Support Only job seekers who have had a Vocational Profile done, but may not be on income support.

Table 3.2: Participation in Job Network assistance by job seeker characteristics: December 2005¹

Job seeker characteristics	Newstart/Youth	Employment Assistance type		
	Allowance (other) recipients	Job Search Support ² (%)	Job Placement ³ (%)	Intensive Support (%)
Age group (years)				
15 to 20	13.8	22.4	20.5	24.3
21 to 24	16.3	13.4	16.8	15.7
25 to 34	23.7	23.3	25.0	22.4
35 to 49	26.1	28.5	26.8	25.9
50 or more	20.0	12.5	10.9	11.8
Total	100.0	100.0	100.0	100.0
Duration on income support (months)				
0 to less than 6	26.5	87.6	37.9	62.4
6 to less than 12	14.7	3.9	18.4	12.7
12 to less than 24	17.9	3.5	18.9	10.9
24 to less than 36	11.1	1.8	8.8	4.9
36 or more	29.8	3.2	16.0	9.1
Total	100.0	100.0	100.0	100.0
Educational attainment				
Less than Year 10	21.6	18.8	21.1	23.8
Year 10 or 11	33.5	37.6	41.7	39.6
Year 12	19.7	21.6	19.3	18.7
Post secondary	25.1	22.0	17.9	17.9
Total	100.0	100.0	100.0	100.0
Gender				
Male	63.3	49.5	64.3	55.3
Female	36.7	50.5	35.7	44.7
Total	100.0	100.0	100.0	100.0
Equity groups⁴				
Disability	17.7	5.7	7.9	8.6
Indigenous	9.3	6.0	6.5	11.3
CALD ⁵	16.8	16.7	12.4	14.4
Sole parents	1.9	10.0	5.2	10.7
Total	100.0	100.0	100.0	100.0

1. Commencements in Job Network employment assistance from 1 January 2005 to 31 December 2005.

2. Commencements in Job Search Support measured through the demographic distribution of registered Vocational Profiles in the year up to 31 December 2005.

3. Demographic breakdown of Job Placements in the year up to 31 December 2005

4. Equity groups are not mutually exclusive.

5. People from Culturally and Linguistically Diverse backgrounds from other than main English Speaking countries.

Source: DEWR administrative systems.

Access to Job Placements

A key performance indicator of Job Network is how it performs across various industries. Table 3.3 shows vacancies and job placements by industry. As can be seen, Manufacturing, Retail trade, Property and business services and Agriculture provide a significant

source of vacancies and placements for Job Network.

Differences are shown between vacancy and placement shares. To some extent they will be due to the fact that the same vacancy may be filled several times depending on the needs of the employer.

Table 3.3: AJS Vacancies and Job Placements by Industry: December 2005

Industry	JNM and JPO initiated Vacancies¹ (%)	JNM and JPO Placement in Job Placement² (%)
Agricultural and industrial sector		
Agriculture, Forestry and Fishing	5.1	6.7
Mining	0.6	0.5
Manufacturing	14.1	19.4
Electricity, Gas and Water Supply	0.3	0.2
Construction	7.6	5.8
Services sector		
Wholesale Trade	3.6	3.8
Retail Trade	14.4	11.0
Accommodation, Cafes and Restaurants	10.4	6.2
Transport and Storage	3.7	3.0
Communication Services	1.1	1.0
Finance and Insurance	0.9	0.6
Property and Business Services	24.1	33.0
Cultural and Recreational Services	1.5	0.9
Personal and Other Services	4.7	4.0
Government and community sector		
Government Administration and Defence	1.0	0.8
Education	1.7	0.7
Health and Community Services	5.0	2.5

1. Vacancies lodged by Job Network member or Job Placement Organisations on Australian JobSearch between 1 January 2005 and 31 December 2005. Columns may not add up to 100% due to rounding.

2. Australian JobSearch vacancies filled by Job Network members or Job Placement Organisations between 1 January 2005 and 31 December 2005. Columns may not add up to 100% due to rounding.

Source: DEWR administrative systems.

Participation in NEIS

Table 3.4 shows, for a range of job seeker characteristics, the proportion in the eligible population and the proportion commencing NEIS. This is shown only for those on an eligible allowance, such as Newstart and Youth Allowance (other) and who are 18 years of age or older.

NEIS is not targeted directly at job seekers with any

particular characteristics. Given the nature of the programme, however, some types of job seekers are less likely to participate in NEIS than others. This is particular the case for groups such as youth (those aged 15 to 20) and the equity groups. On the other hand persons with a post secondary education participate in NEIS at a higher rate than their proportion of the eligible population.

Table 3.4: Access to NEIS by job seeker characteristics year to end December 2005¹

Job seeker characteristics	Eligibility for NEIS ² (%)	Commencement in NEIS (%)
Age group (years)		
15 to 20	10.6	1.9
21 to 24	17.0	9.2
25 to 34	24.6	31.9
35 to 49	27.1	40.2
50 or more	20.7	16.8
Total	100.0	100.0
Duration on income support (months)		
0 to less than 6	25.3	49.8
6 to less than 12	14.3	25.4
12 to less than 24	18.0	12.9
24 to less than 36	11.5	4.6
36 or more	30.9	7.3
Total	100.0	100.0
Educational attainment		
Less than Year 10	22.2	6.9
Year 10 or 11	34.0	23.7
Year 12	19.5	24.7
Post secondary	24.4	44.6
Total	100.0	100.0
Gender		
Male	63.8	53.9
Female	36.2	46.1
Total	100.0	100.0
Equity groups³		
Disability	18.2	11.3
Indigenous	8.9	3.2
CALD ⁴	17.3	16.6
Sole parents	1.9	6.1

1. Commencement of job seekers in NEIS from 1 January 2005 to 31 December 2005.
2. Job seekers receiving Newstart and Youth Allowance (Other) and 18 or over as at 31 December 2005.
3. Equity groups are not mutually exclusive.
4. People from Culturally and Linguistically Diverse backgrounds from other than main English Speaking countries

Source: DEWR administrative systems.

Participation in Work for the Dole

Table 3.5 shows, for a range of job seeker characteristics, the proportion in the eligible population and the proportion commencing Work for the Dole (WfD). This is shown only for those on the activity tested payments Newstart and Youth Allowance (other) and who are 18 years of age or older.

Job seekers are required to participate in WfD for up to six months over a twelve month period. This means that job seekers can participate in a number of different WfD projects and with different CWCs before completing their placement. Each time a job

seeker starts with a CWC, a new commencement is recorded.

Job seekers aged 50 years or more who participate in Work for the Dole are volunteers.

WfD tends to exhibit different patterns in participation to NEIS with younger job seekers proportionally over-represented in the participating population in relation to their eligibility, while job seekers unemployed for less than six months under-represented. Again this reflects the unique eligibility requirements of the programme.

Table 3.5: Access to Work for the Dole by job seeker characteristics year to end December 2005¹

Job seeker characteristics	Eligibility for Work for Dole ² (%)	Commencement in Work for the Dole (%)
Age group (years)		
15 to 20	10.6	15.5
21 to 24	17.0	21.7
25 to 34	24.6	28.4
35 to 49	27.1	31.9
50 or more	20.7	2.5
Total	100.0	100
Duration on income support (months)		
0 to less than 6	25.3	5.9
6 to less than 12	14.3	26.8
12 to less than 24	18.0	15.5
24 to less than 36	11.5	13.8
36 or more	30.9	38.0
Total	100.0	100
Educational attainment		
Less than Year 10	22.2	35.3
Year 10 or 11	34.0	36.2
Year 12	19.5	15.9
Post secondary	24.4	12.7
Total	100.0	100
Gender		
Male	63.8	70.3
Female	36.2	29.7
Total	100.0	100
Equity groups³		
Disability	18.2	7.2
Indigenous	8.9	6.6
CALD ⁴	17.3	12.6
Sole parents	1.9	1.4

1. Commencement of job seekers in Work for the Dole from 1 January 2005 to 31 December 2005.
2. Job seekers receiving Newstart and Youth Allowance (Other) as at 31 December 2005.
3. Equity groups are not mutually exclusive.
4. People from Culturally and Linguistically Diverse backgrounds from other than main English

Source: DEWR administrative systems.

Section 4: Participation and Outcomes by Region

Participation in labour market assistance by region

This section presents data on participation by job seekers in labour market assistance for the DEWR Labour Market Regions. A map of DEWR regions is included in the Technical Notes of this report.

Reporting at a regional level is restricted to the main types of Job Network assistance and Work for the Dole.

Table 4.1 provides details of placements in Job Placement jobs and commencements in Job Search Support, Intensive Support and Work for the Dole.

The number of placements and commencements in the various types of labour market assistance will depend on the size of the region, labour market conditions and the relative disadvantage of job seekers in the region.

Table 4.1: Commencements in labour market assistance by region: December 2005¹

DEWR Region	Job Search Support (Number)	Job Placements (Number)	Intensive Support (Number)	Work for the Dole (Number)
Sydney	88,635	82,816	57,923	13,957
Hunter and North Coast	38,383	40,074	30,858	8,242
Illawarra and SE NSW	17,197	18,882	12,948	3,800
Western NSW	16,158	23,253	12,969	2,816
Riverina	7,108	12,221	5,128	1,074
New South Wales	167,481	177,246	119,826	29,889
Melbourne	82,681	101,472	53,080	12,228
Eastern Victoria	12,008	21,541	10,329	2,716
Western Victoria	20,821	34,082	16,320	4,595
Victoria	115,510	157,095	79,729	19,539
Brisbane	74,646	100,411	50,566	10,143
Southern Queensland	16,335	22,529	13,398	3,632
Central and Northern QLD	26,594	40,856	19,985	4,220
Queensland	117,575	163,796	83,949	17,995
Perth	31,707	43,342	23,312	4,346
South Western Australia	7,104	10,009	4,999	1,264
Greater Western Australia	7,711	7,846	7,342	744
Western Australia	46,522	61,197	35,653	6,354
Adelaide	26,407	42,399	20,838	5,039
South Australia Country	11,514	20,005	9,222	2,121
South Australia	37,921	62,404	30,060	7,160
Tasmania	13,321	22,364	11,038	2,761
Northern Territory	7,173	6,700	7,857	519
Australian Capital Territory	5,263	6,222	3,341	729
Australia	510,766	657,024	371,453	84,946

1. Commencements in Job Network employment assistance and Work for the Dole from 1 January 2005 to 31 December 2005.

Source: DEWR administrative systems.

Labour market assistance by region

Table 4.2 shows the proportion of Newstart and Youth Allowance (Other) recipients as at 31 December 2005 compared to the proportion of Job Network eligible Job Placements and commencements in Job Search Support, Intensive Support and Work for the Dole. This is provided on a DEWR regional and State and Territory basis.

Variations in participation in employment assistance for the major metropolitan areas are evident. Job seekers in Brisbane are generally more likely to participate in employment assistance, whereas those in Melbourne in particular are less likely to. Similarly job seekers in the major metropolitan labour market regions are less likely to participate in Work for the Dole, than those outside of these areas. This is likely to reflect the range of alternatives available to these job seekers.

Table 4.2: Comparison of labour market assistance by region year to end December 2005

DEWR Region	Newstart/ Youth Allowance (Other) recipients ¹ (%)	Job Search Support ² (%)	Intensive Support ² (%)	Work for the Dole ² (%)
Sydney	16.2	17.4	15.6	16.4
Hunter and North Coast	7.9	7.5	8.3	9.7
Illawarra and SE NSW	3.3	3.4	3.5	4.5
Western NSW	3.4	3.2	3.5	3.3
Riverina	1.2	1.4	1.4	1.3
New South Wales	32.1	32.8	32.3	35.2
Melbourne	17.0	16.2	14.3	14.4
Eastern Victoria	2.6	2.4	2.8	3.2
Western Victoria	4.5	4.1	4.4	5.4
Victoria	24.1	22.6	21.5	23.0
Brisbane	12.2	14.6	13.6	11.9
Southern Queensland	3.0	3.2	3.6	4.3
Central and Northern QLD	4.7	5.2	5.4	5.0
Queensland	19.9	23.0	22.6	21.2
Perth	5.8	6.2	6.3	5.1
South Western Australia	1.2	1.4	1.3	1.5
Greater Western Australia	1.6	1.5	2.0	0.9
Western Australia	8.7	9.1	9.6	7.5
Adelaide	6.0	5.2	5.6	5.9
South Australia Country	2.3	2.3	2.5	2.5
South Australia	8.3	7.4	8.1	8.4
Tasmania	3.5	2.6	3.0	3.3
Northern Territory	2.5	1.4	2.1	0.6
Australian Capital Territory	1.0	1.0	0.9	0.9
Australia	100.0	100.0	100.0	100.0

1. Job Seekers receiving Newstart or Youth Allowance (Other) as at 31 December 2005.

2. Commencements in Job Network employment assistance or Work for the Dole from 1 January 2005 to 31 December 2005.

Source: DEWR administrative systems.

Employment outcomes by region

Table 4.3 shows employment outcomes for job seekers who ceased assistance between 1 October 2004 and 30 September 2005 and achieved by 31 December 2005. Employment outcomes are for Job Placement, Intensive Support job search training,

Intensive Support customised assistance and Work for the Dole. Job Placement outcomes include both fully Job Network Eligible and Job Search Support Only job seekers. Outcomes are presented on a DEWR regional, State and Territory and national basis.

Table 4.3: Regional labour market post assistance employment outcomes year to end December 2005¹

DEWR Region	Job Placement ² (%)	Intensive Support job search training ³ (%)	Intensive Support customised assistance ³ (%)	Intensive Support ⁴ (%)	Work for the Dole ³ (%)
Sydney	64.2	46.6	39.2	49.9	30.4
Hunter and North Coast	73.2	50.9	44.2	50.4	30.0
Illawarra and SE NSW	75.1	48.9	44.9	51.1	27.5
Western NSW	70.4	51.0	40.3	43.7	27.8
Riverina	78.3	49.7	43.4	52.5	27.8
New South Wales	69.3	48.3	41.7	49.6	29.6
Melbourne	71.0	52.0	46.1	54.6	33.2
Eastern Victoria	66.6	51.8	47.8	57.1	26.1
Western Victoria	73.8	52.8	46.0	56.1	32.4
Victoria	71.0	52.2	46.3	55.2	32.2
Brisbane	74.4	56.4	50.5	62.2	40.1
Southern Queensland	71.7	54.7	45.6	55.2	33.7
Central and Northern QLD	70.7	57.4	43.4	53.1	38.3
Queensland	73.4	56.3	47.6	58.9	38.4
Perth	73.2	57.5	51.4	60.2	37.3
South Western Australia	73.2	58.2	53.4	66.8	42.3
Greater Western Australia	71.7	54.1	39.3	50.2	29.4
Western Australia	73.1	57.6	49.6	60.0	37.3
Adelaide	68.6	53.2	48.4	58.1	34.1
South Australia Country	72.5	52.8	47.3	52.0	28.8
South Australia	70.0	53.3	48.1	56.2	32.5
Tasmania	69.3	50.2	46.9	52.8	28.5
Northern Territory	63.1	57.6	32.3	35.8	29.0
Australian Capital Territory	84.4	51.7	47.0	54.6	35.9
Australia	71.3	52.4	45.2	54.5	32.9

1. Employment outcomes exclude Indigenous job seekers who return to a Community Development Employment Projects (CDEP) after leaving labour market assistance.
2. Job Placement outcomes are for job seekers placed in an eligible Job Placement job between 1 October 2004 and 30 September 2005 and outcomes achieved by 31 December 2005. For job seekers who achieved a Job Placement within three months of leaving labour market assistance such as Intensive Support job search training, Intensive Support customised assistance and Work for the Dole, the outcome is excluded from Job Placement but included under the programme or service they participated in.
3. Post assistance employment outcomes relate to job seekers who ceased Intensive Support customised assistance, Intensive Support job search training or Work for the Dole between 1 October 2004 and 30 September 2005 and outcomes achieved by 31 December 2005.
4. Job seekers who commenced Intensive Support between 1 July 2003 and 30 September 2004 and left Intensive Support or were receiving Intensive Support assistance for 12 or 24 months between 1 October 2004 and 30 September 2005 and outcomes achieved by 31 December 2005.

Source: The Post Programme Monitoring Survey conducted three months after job seekers cease assistance.

Section 5: Impact on Income Support Recipients

Number of income support recipients

An important goal of employment assistance is to reduce or remove employment barriers experienced by job seekers so they can compete effectively for jobs. Higher levels of employment assistance are provided to the most disadvantaged job seekers.

While this report focuses mainly on the outcomes achieved by individual forms of assistance, it is also important to note that other factors, such as administrative changes and economic conditions, also have a significant impact on the number of income support recipients.

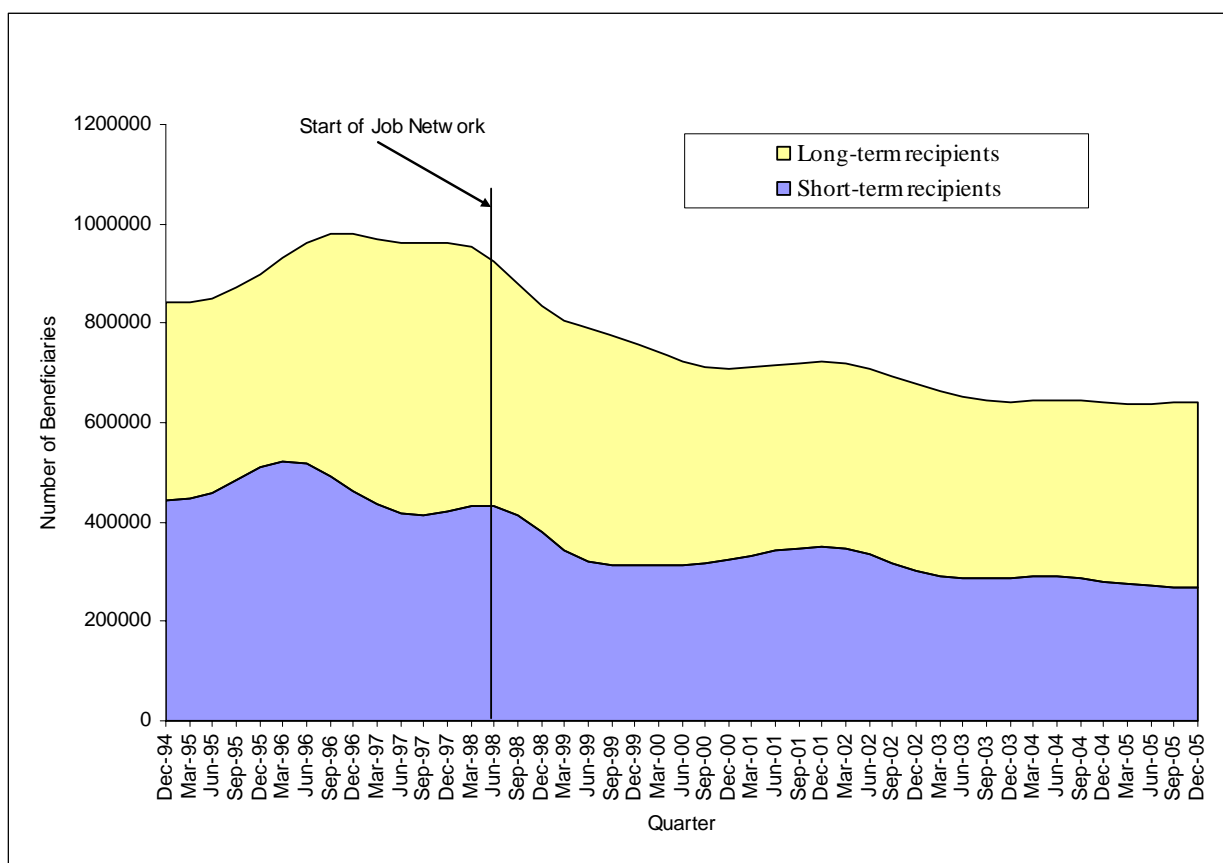
Figure 5.1 shows the changes over time in the number of short and long term income support recipients. Many long term recipients (in receipt of Newstart and Youth Allowance (Other) for 12 months or more) will have had a job at some time over the last 12 months. These job seekers are

reclassified as short term recipients only if they remain totally off benefits for a continuous period of more than 13 weeks.

Hence, long-term recipients should not be confused with the long term unemployed as defined by the Australian Bureau of Statistics. The long-term unemployed are people currently looking for work who have not had a job that lasted for 2 weeks or more in the last year.

Data on income support recipients shows that in the 12 months to the end of December 2005, the number of people in receipt of Newstart or Youth Allowance (Other) decreased by around 30,000 to just over 560,000 job seekers. The number of job seekers who were long-term recipients decreased by more than 18,500 recipients while the number of short-term recipients decreased by over 11,400.

Figure 5.1: Number of Income Support Recipients¹



1. Figures quoted in the text are from the Department of Employment and Workplace Relations: "Labour Market and Related Payments a monthly profile, December 2005".

Source: Trend series based on data from DEWR administrative system.

Off-Benefit outcomes

An assessment of the impact that assistance has can also be undertaken by looking at the income support status of participants after they leave assistance.

Figure 5.2 shows the off-benefit status of job seekers three and six months after they had exited employment assistance. Results are not shown for Transition to Work as a significant proportion of the population are not on income support when they commenced in the programme.

Off-benefit outcomes are only measured for clients who were in receipt of Newstart and Youth Allowance (other) (i.e. activity tested beneficiaries) when they commenced their employment assistance placement. Other clients, on non-activity tested benefits have different allowable earnings thresholds and their inclusion has the potential to distort the results.

The majority of job seekers who move off income support do so for employment, particularly full-time employment. For most programmes, however, off-benefit outcomes levels are generally slightly lower than employment outcomes levels. This reflects the fact that three months after exiting an employment assistance placement the proportion of people in part-time work who remain on benefits is somewhat larger than the proportion that have moved off income

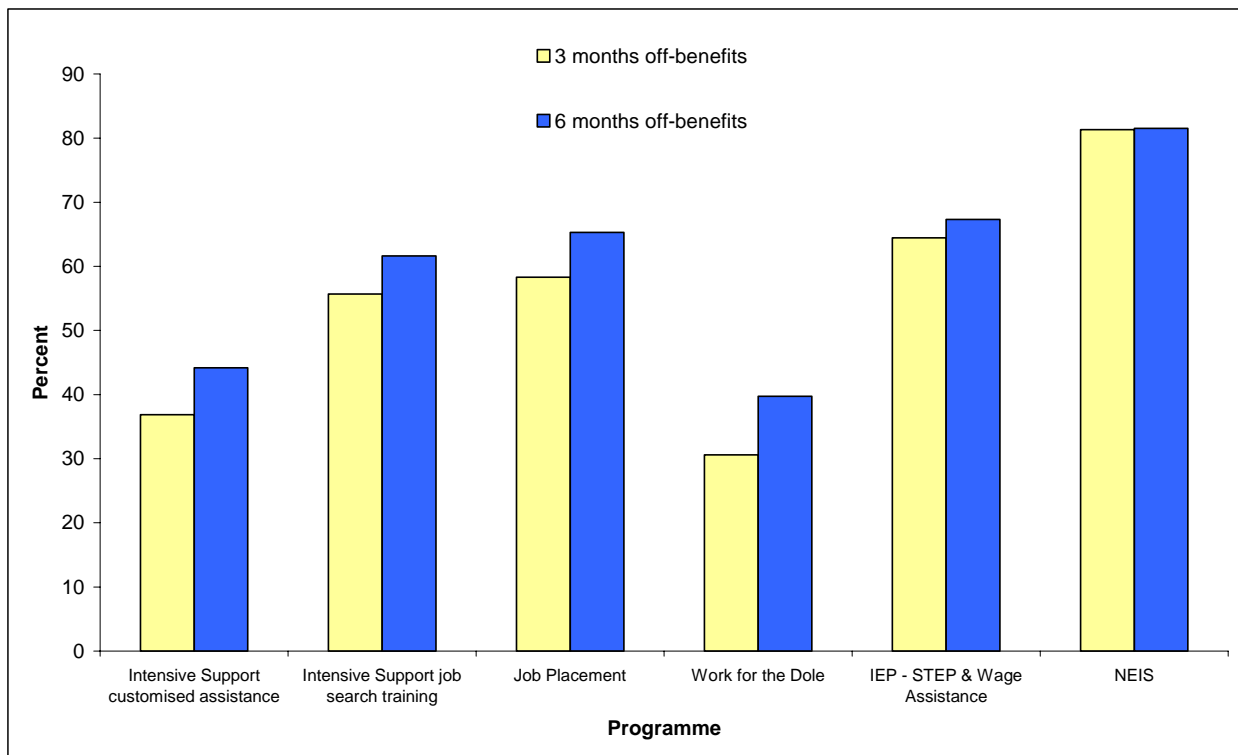
support for reasons other than employment (e.g. leaving the labour market).

Three month off-benefit outcomes tend to mirror what is found in relation to employment outcomes, with those programmes that achieve high employment outcomes achieving high three months off-benefit outcomes. Those that achieve high off-benefit outcomes at three months experience little change at the six month mark. This indicates that for these programmes the benefits happen relatively shortly after completing the programme.

For other programmes, particularly those targeted at the more disadvantaged, it is evident that there is a substantial rise in off-benefit levels between three and six months after leaving assistance. This indicates that the benefits from these programmes tend to take longer to materialise for the job seeker. Notwithstanding this longer lead time, strong off-benefit outcomes are achieved for most programmes.

Off-benefit outcomes for Intensive Support are not reported this quarter. This is because of the effect of the transition to the 12 and 24 month samples. Off-benefit outcomes will be reported again in the March 2006 edition of the report.

Figure 5.2: Three¹ and six² month off-benefit status of job seekers following assistances



1. Job seekers who left assistance between 1 October 2004 and 30 September 2005 and were not on income support three months later.
2. Job seekers who left assistance between 1 July 2004 and 30 June 2005 and were not on income support six months later.

Technical Notes

Data sources, sampling, further assistance and survey results

Data Sources

The department uses a number of data sources to determine the outcomes achieved by job seekers during and after they have ceased labour market assistance. The two main data sources are the *Post Programme Monitoring (PPM) survey* and the department's administrative database held within the Integrated Employment System (IES).

PPM surveys have been undertaken since 1987 and are used to assess the labour force and education status of former programme participants three months after they exit assistance. The IES records details of placements, commencements and paid outcomes for labour market assistance.

Survey Sampling

With the introduction of the *Active Participation Model (APM)* in July 2003 the PPM methodology was subjected to revision. Prior to the APM, a full enumeration of clients exiting programmes and not in further assistance was attempted (with the exception of Intensive Assistance and Job Matching which were based on 25% samples).

From July 2003 onwards, the PPM survey uses a sampling approach to assess the performance of all employment assistance. For all programmes except Job Placement, a 25% sample of clients in the following categories is undertaken:

- a) clients found to be on full-rate of Newstart or Youth Allowance(Other) and/or in a subsequent programme placement (also known as 'further assistance') at the time they are due to be surveyed;
- b) clients who achieved a 13 week payable outcome after receiving assistance under Intensive Support; and
- c) clients who have reached 12, 24 or 36 months participation in Intensive Support (IS) without exiting.

The PPM outcome of clients in category (b) is recorded as employed or in education based on the type of payable outcome they achieved. These clients are only surveyed to obtain supplementary information about their labour force and education status. A full enumeration of clients not in categories a, b, or c is attempted.

For clients who were placed in a job through Job Placement, a survey of 25% of clients is undertaken.

Further Assistance

A client is defined as being in further assistance if, at the time they are due to be surveyed, the client is found to have commenced a subsequent placement. Intensive Support itself is not counted as further assistance unless the client moves between providers for whatever reason.

As outlined previously, a 25% sample of clients found to be in further assistance is currently included in the survey. Prior to the commencement of the APM, clients in further assistance were not surveyed and their outcomes were simply recorded as 'in further assistance'. While these clients may have potentially been either in a part time job and/or in education, these outcomes were not captured as these clients were not surveyed. Under the new sampling methodology these outcomes can now be recorded.

The impact on PPM results of surveying job seekers in further assistance will vary amongst the programmes. Programmes such as TTW and NEIS will see little impact on their outcomes results given that few of their participants proceeded to further assistance. For other programs, the impacts will vary, but any variations will generally be modest.

Comparisons with pre-APM outcomes

In addition to the limitations outlined above in the 'Further Assistance' section, care should also be taken when comparing outcomes achieved for services delivered under the APM with outcomes for similar pre-APM Job Network services. This is because similar types of assistance (eg Intensive Assistance delivered under ESC rounds 1 and 2, and Intensive Support customised assistance delivered under the APM), will have differences in client mix and the type, and way, in which services are delivered to clients.

Intensive Support population

The population used for the calculation of IS outcomes includes those clients who, in any given reporting period first: a) exited IS, b) began a 13 week period leading to an outcome or intermediate payment; or c) reached 12, 24 or 36 months participation in IS without exiting.

Clients are surveyed after 12, 24 and 36 months participation to avoid potential biases in the calculation of outcomes results. If these clients were not surveyed as they progressed through IS, outcomes would be overstated as those not achieving outcomes would remain in assistance and not enter the survey. From the December 2005 quarter onwards, outcomes are reported for the Intensive

Support population as a whole as well as being broken down to the 12 and 24 month sub samples.

In addition, if a client is due to be surveyed during /after their participation in IS, or after participating in ISca or ISjst, and is found to have been surveyed in the last 3 months, then their outcome will be set to the outcome (if it is known) that was obtained when they were surveyed previously.

Survey results

Aside from IS, ISjst and ISca, where PPM results are based on a combination of survey responses and payable outcomes data, all outcome estimates are based on survey responses. The overall response rate for the PPM survey, at around 60%, provides outcomes estimates that are generally accurate to within plus or minus 1 percentage point at the National level.

Labour Market Assistance Descriptions

Intensive Support stream: provides individually tailored assistance for up to 42 months for eligible job seekers. Access to assistance through Intensive Support is immediately at registration for those job seekers identified as highly disadvantaged with the remainder having access to assistance after three months of unemployment. Under Intensive Support a job seeker can have access to the general Intensive Support assistance, Intensive Support job search training and/or Intensive Support customised assistance.

Intensive Support (IS): assistance will be provided during periods between ISjst, ISmo and ISca. During these periods, job seekers will continue to have access to job search assistance and facilities at their Job Network member site, guidance in relation to job search and the regular updating of their vocational profile.

Intensive Support customised assistance (ISca): provides for six months of assistance tailored to the jobseekers' individual needs and to available jobs opportunities. Job seekers who are most disadvantaged (as determined by their JSCI score) receive immediate access to ISca. Other job seekers will be eligible to receive ISca assistance after 12 months of unemployment.

Intensive Support job search training (ISjst): provides training for up to 100 hours (over three weeks) in job search techniques and job application skills to give unemployed people the skills and confidence to improve their job search skills, motivation and expand their job search networks. Mature age and Indigenous job seekers have immediate access to ISjst on registration for unemployment allowance.

Intensive Support mutual obligation (ISmo): occurs at the same time that a job seeker's ordinary mutual obligation requirements commence. The objective of Job Network services during these periods is to ensure that job seekers continue to be actively engaged in job search activities and improving their job prospects.

Job Placement services refer suitable job seekers to vacancies and canvass and list job vacancies on the Australian Job Search database. DEWR licensed

recruitment agencies, Job Placement Organisation (JPOs), are in a position to provide Job Placement service to eligible job seekers. Job Network members are licensed as JPOs.

New Enterprise Incentive Scheme (NEIS): provides support and training for eligible job seekers who wish to pursue the option of self-employment.

Indigenous Employment Programme: replaced the Training for Aboriginals and Torres Strait Islanders Programme (TAP) and has several components. It includes Wage Assistance which is a wage subsidy paid to employers over 26 weeks providing on-going employment. In Structured Training and Employment Projects (STEP), employers in the private sector and regional and community based employment sponsor organisations provide jobs, generally involving accredited training or a traineeship.

Indigenous Employment Centres: help Community Development Employment Project participants find employment.

Work for the Dole: provides assistance for job seekers to develop work habits, generic work skills and work experience by participating in community projects and activities for up to 26 weeks over a 12 month period.

Community Work placements: assist job seekers to gain skills and work experience and provides access to additional benefits such as Training Credits and Passport to Employment after participating in voluntary work for a specified number of hours.

Transition to Work Programme: helps job seekers who are parents, carers and mature age people 50 years and over entering the workforce for the first time or returning to the workforce after an absence of 2 years or more.

Training accounts: help mature age and indigenous job seekers who participate in Intensive Support or Indigenous Employment Centres improve their employment prospects through the provision of training.

Training Credits: provide job seekers who participate in a Work for the Dole or Community Work Placement for between 16 and 26 weeks with a training credit which can be used to pay for additional training.

General Definitions

AJS, Australian JobSearch (<http://jobsearch.gov.au>): lists all job vacancies notified to the Job Network and provides contact details for Job Network members. It is available in Centrelink and at Job Network member offices and through the DEWR Internet site (<http://www.workplace.gov.au>).

Community Development Employment Projects (CDEP) :is a scheme that provides work for Indigenous Australians in community-managed activities that help the individual to acquire skills that benefit the community, develop business enterprises and/or lead to unsubsidised employment. It usually involves part-time work at the equivalent of the unemployment allowance. Positive and employment outcomes exclude Indigenous job seekers who return to a CDEP after leaving labour market assistance.

Community Work Coordinators: are contracted to develop Community Work placements and Work for the Dole projects/activities and manage the placement of eligible job seekers into those projects/activities.

Educational attainment: refers to the highest educational level completed by job seekers.

Eligible vacancy: is a job vacancy listed on the Australian Job Search database that is eligible for a payment under Job Network.

Further assistance: includes job seekers who proceed to another DEWR or DEST funded employment programme or service within three months of exiting employment assistance. It includes commencements in Intensive Support job search training (ISjst), Intensive Support customised assistance (ISca), New Apprenticeships, NEIS, Work for the Dole, Green Corps, Advanced English for Migrants Programme (AEMP) and the STEP and Wage Assistance components of the Indigenous Employment Policy. A job seeker who is in the general Intensive Support or Job Search Support streams of assistance are not regarded as being in further assistance.

Income support recipients: includes job seekers registered with Centrelink as unemployed and in receipt of Newstart Allowance (NSA) or job seekers aged 15 to 24 not in full-time education and in receipt of Youth Allowance (Other) (YA).

Job Search Support Only (JSSO): refers to those job seekers, irrespective of their income support status, who are eligible for only Job Search Support services and no other form of Job Network services. JSSO job seekers can renew their registration as unemployed every three months with either Centrelink or their Job Network member.

Job placements: include placements provided under Job Search Support and job placements under Intensive Support customised assistance.

Fully Job Network Eligible (FJNE): refers to those job seekers who are eligible to receive the full suite of Job Network services. Any unemployed person receiving Newstart Allowance or Youth Allowance (Other) or another form of qualifying income support payment and young people not in full-time study irrespective of income support are eligible for Job Network assistance. CDEP participants are also eligible for Job Network services.

Job Seeker Classification Instrument (JSCI): a measurement of a job seeker's relative disadvantage in obtaining employment – because of their personal circumstance and labour market skills – and is used to determine the level of labour market assistance required.

People from Culturally And Linguistic Diverse backgrounds (CALD): refers to people from Culturally and Linguistically Diverse backgrounds, where the main language spoken is not English.

Work for the Dole (WfD) commencement: involves a job seeker participating in a WfD activity for up to six months over a 12-month period. This means that job seekers can participate in a number of different WfD projects and with different CWCs before completing their placement. Each time a job seeker starts with a CWC, a new commencement is recorded.

Work for the Dole exit: for the purposes of PPM, occurs when a job seeker has a break between CWC placements of more than 3 months and in relation to their last CWC placement in the 12 month period. Clients exiting WfD will be subsequently surveyed.

Regional Coverage

Regions used in this report are based on the 19 labour market regions used in contracting for DEWR programmes and services.

DEWR labour market regions

