



Australian Government

VET **Student** Loans



Six-monthly report

1 January 2017 to 30 June 2017

Introduction

This report is provided in accordance with section 103A of the *VET Student Loans Act 2016* (Act), which requires that:

The Secretary must publish the following information within 42 days after the end of the period of 6 months beginning on 1 January and 1 July in each year (the reporting period):

- a) *the number of approved course providers who operated during the reporting period;*
- b) *for each of those providers:*
 - i) *the name of the provider; and*
 - ii) *the value of VET student loans approved by the Secretary for approved courses offered by the provider during the reporting period; and*
 - iii) *the number of students who undertook approved courses offered by the provider during the reporting period and whose tuition fees for the courses were paid (whether in whole or in part) using VET student loans; and*
 - iv) *the number of such students who completed approved courses during the reporting period; and*
 - v) *the amount of tuition fees charged to such students by the provider during the reporting period;*
- c) *any other information in relation to VET student loans prescribed under the rules.*

This report covers the period from 1 January 2017 to 30 June 2017.

Consistent with section 103A, the report focuses on students whose tuition fees were paid (whether in whole or in part) using a VET Student Loan or VSL. This report refers to these students as **VSL-assisted students**.

Information relating to students who have not taken out a VET Student Loan (or non-VSL-assisted students) is not included in this report.

Context: A period of transition to the new VET Student Loans program

The six-month period covered in this report was a period of transition.

The VET Student Loans program commenced on 1 January 2017 and replaced the VET FEE-HELP scheme, which closed to new students on 31 December 2016.

This delivered on the Government's commitment to redesign VET FEE-HELP so that it is student centred, delivers high quality training, is fiscally sustainable, and holds providers to account. The new program focuses on program integrity, manages risk and promotes confidence in the regulated VET market by ensuring students are both academically suited to their course and are studying under a quality provider.

VET Student Loans offers income contingent loan support to eligible students studying approved Diploma level and above vocational education and training qualifications. Eligible students are entitled to access loans up to a capped amount of either \$5,000, \$10,000 or \$15,000 based on cost of delivery, though the Minister has the power to provide different (and higher) caps for particular courses (for example, aviation related courses).

The list of current VET Student Loans approved courses and maximum loan amounts by course is available in the [VET Student Loans \(Courses and Loan Caps\) Determination 2016](#).

Under the transitional arrangements, 167 providers operated as approved course providers under the VET Student Loans program for the six months to 30 June 2017.

From 1 July 2017, more than 100 providers are approved to deliver VET Student Loans under the full program, and an additional application process is expected to take place later in 2017.

Existing VET FEE-HELP students are eligible to continue their studies under the VET FEE-HELP scheme until the end of 2017, with extension beyond this time allowed under exceptional circumstances. Information relating to these students is not included in this report.

Information required under section 103A of the *VET Student Loans Act 2016*

During the period 1 January 2017 to 30 June 2017 a total of 167 registered training organisations operated as approved course providers for VET Student Loans (section 103A(a)).

Table 1 in the Appendix to this report sets out all of the information required by section 103A(b) for each provider.

In addition, this report sets out information and commentary on highlights for each of the matters specified in section 103A(b) for the six-month period, namely:

- Approved course providers
- The value of VET Student Loans
- VSL-assisted students
- Completions
- Tuition fees

Approved course providers (sections 103A(a) and (b)(i))

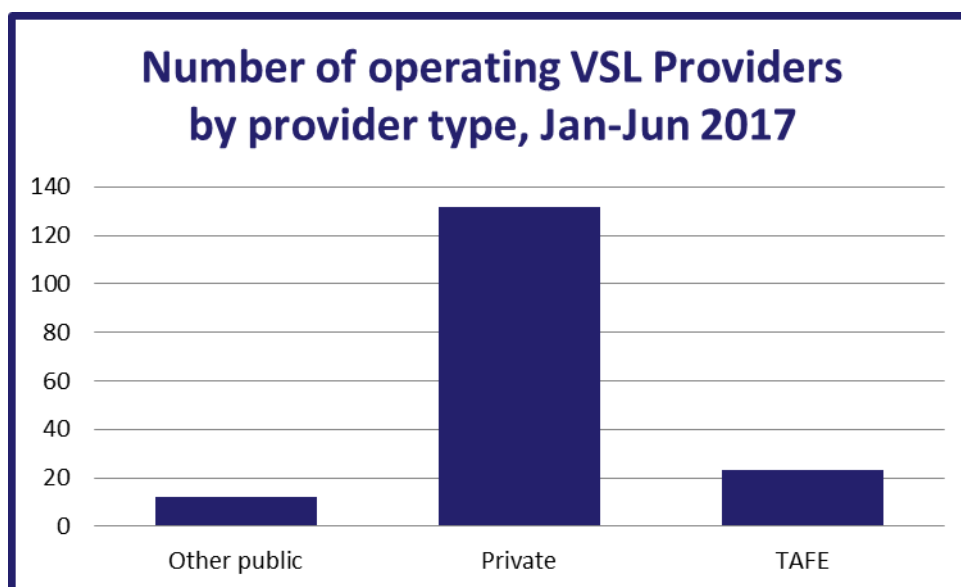
All of the 167 registered training organisations that operated as approved course providers during the transition period from 1 January 2017 to 30 June 2017 were previously approved as VET FEE-HELP providers. Provisional approval for VET Student Loans for the transition period was open only to existing VET FEE-HELP providers.

The 167 approved course providers comprised:

- 23 TAFEs
- 12 other public organisations (including Table A providers), and
- 132 private providers.

The numbers of providers in these different categories is shown in Figure 1.

Figure 1: Approved course providers by type, 1 January 2017 to 30 June 2017



The names of each of the 167 approved course providers who operated during the reporting period are provided in Table 1.

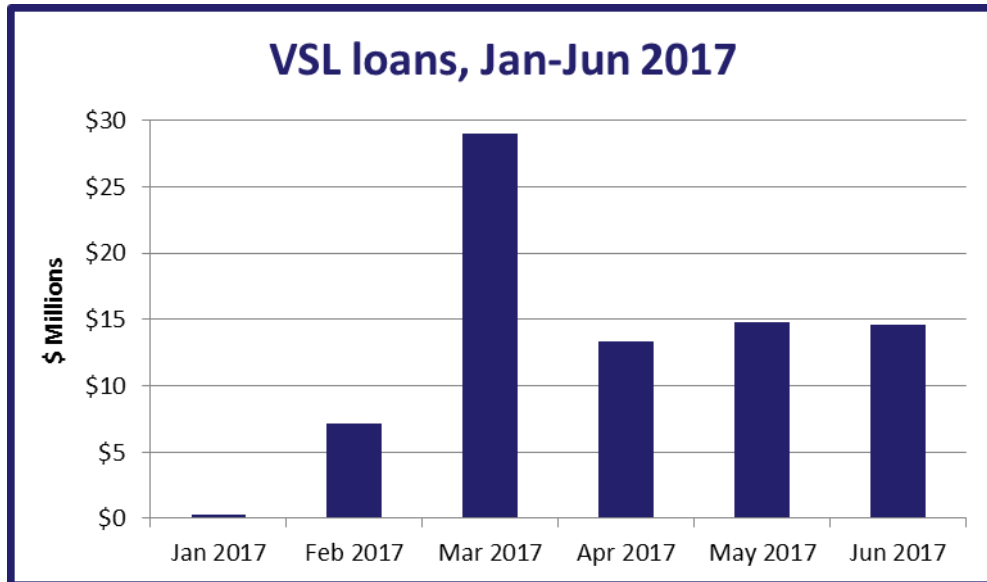
Only 138 of the 167 provisionally approved course providers that operated during the reporting period had students who actually accessed a VET Student Loan during that period.

Value of VET Student Loans (section 103A(b)(ii))

The amount paid to approved course providers in respect of VET Student Loans approved for students studying eligible courses, for the reporting period, was \$78,131,044.

Figure 2 shows the value of VET Student Loans paid for study undertaken during each month¹.

Figure 2: Value of VET Student Loans paid for study undertaken in each month, 1 January 2017 to 30 June 2017

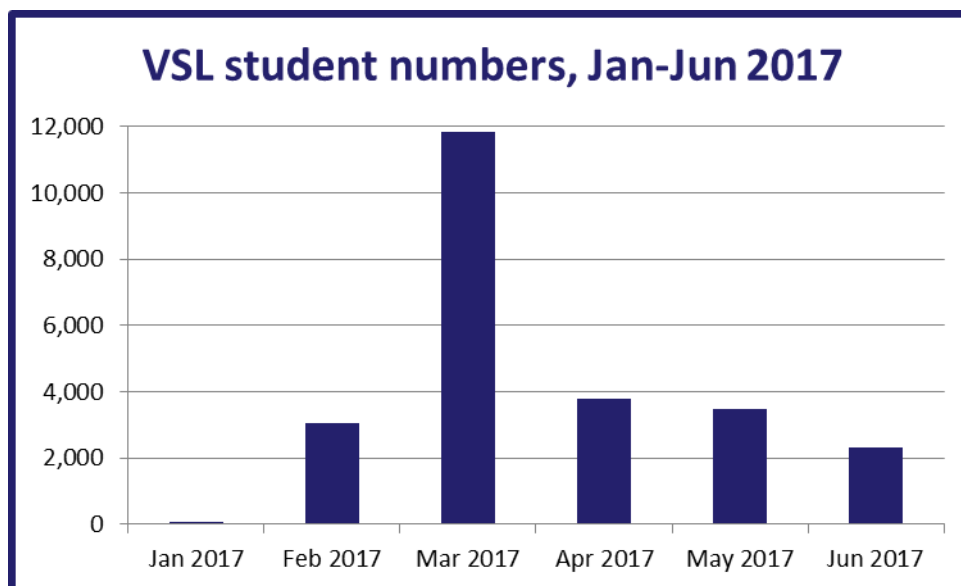


VSL-assisted students (section 103A(b)(iii))

During the reporting period, a total of 24,492 students had a VET Student Loan approved.

Figure 3 shows the number of students who had a VET Student Loan approved for the first time in the reporting period, in each month.

Figure 3: VSL-assisted student numbers, 1 January 2017 to 30 June 2017



¹ Study undertaken during each month is defined as a part of the course where the census day is in that month, regardless of when payment was made.

Monthly student numbers peaked in March 2017, commensurate with the peak in VSL payments. It should be noted that some students may have had a VET Student Loan approved in more than one month – for example, if they accessed a VET Student Loan for more than one part of a course, or for more than one course. These students are represented only the first time they accessed a VET Student Loan.

A breakdown of students by provider is shown in Table 1. However, the total of 24,492 only counts each student once, regardless of how many providers they were studying at.

Completions (section 103A(b)(iv))

As the VET Student Loans program has been in operation for a six-month transition period only, relatively few students have completed a course, as shown in Table 1, as qualifications at Diploma level and above tend to have lengths of six months or more. Most VSL students did not start studying until at least two months into the six-month reporting period, as illustrated in Figure 3, and therefore would not have had time to complete their course.

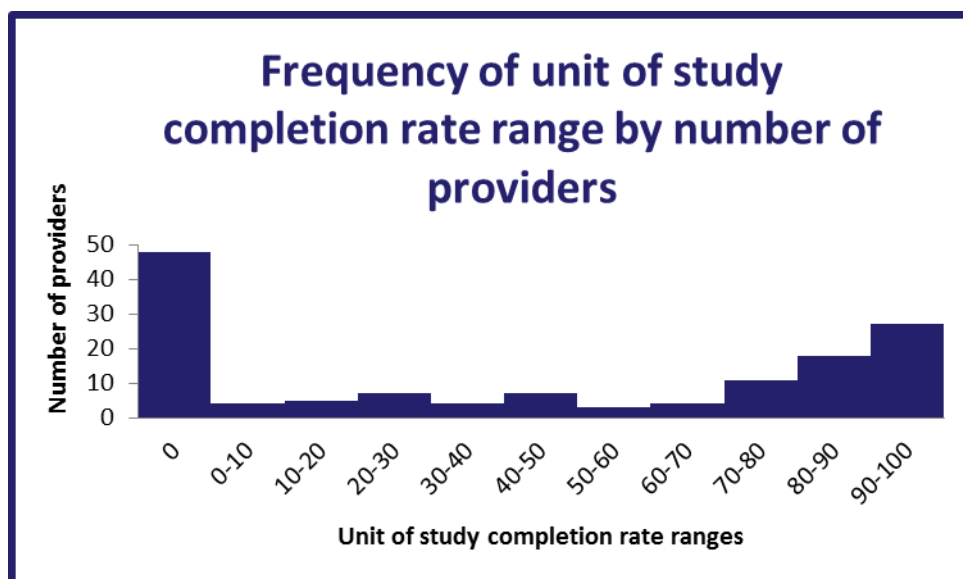
As the number of students completing a course is low for the reporting period, for the reasons explained above, this report also includes information on unit of study completion rates in Table 1.

A course consists of a number of units of study (referred to as “parts of the course” in the VET Student Loans Act 2016). Thus, reporting on unit of study completion rates provides an alternative way of presenting information on students’ progression through their courses at this early stage of the program.

The unit of study completion rate is the proportion of units of study that were passed, of the total units of study undertaken, with units of study measured in Equivalent Full Time Student Load (EFTSL) rather than student numbers.

Units of study undertaken are units that providers have reported as being withdrawn from, failed or successfully completed, as well as units for which providers have failed to report a completion status.

Figure 4: Histogram of VSL-assisted student unit of study completion rates, Jan-Jun 2017



The overall unit of study completion rate for VSL-assisted students in the reporting period is 75.2 per cent.

This represents a significant increase from the 2016 VET FEE-HELP unit of study completion rate of 65.3 per cent. At the same time, when reviewing the increase in unit of study completion rate it is

important to note that the VSL rates provided in Table 1 represent only six months' worth of data, compared to 12 for the 2016 VET FEE-HELP figure. As such, a recalculation of the VSL rates at a later point in time may provide results different from those provided in Table 1².

Figure 4 shows a histogram of unit of study completion rates for the reporting period. Of the 138 VSL providers that had students who accessed a VET Student Loan in the reporting period (29 providers had 0 students and have not been included in Figure 4), 48 (35 per cent) had a unit of study completion rate of 0, with 56 (41 per cent) having unit of study completion rates above 70 per cent.

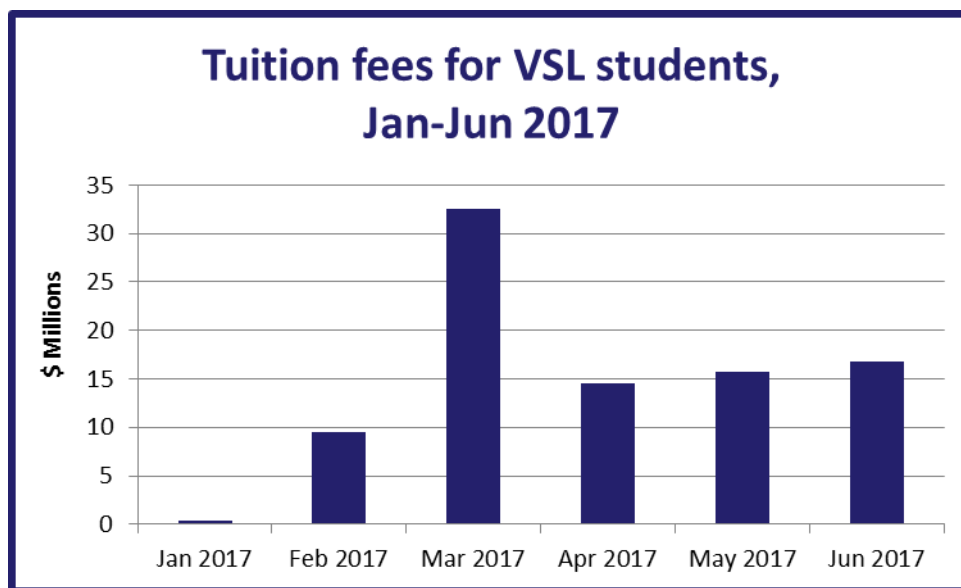
Note that students with providers that had a unit of study completion rate of 0 are most likely to be still studying those units. As with students not having yet completed a course, some providers may not have enrolled VSL-assisted students until quite late in the reporting period, which would lower the chances of any student completing a unit of study.

Tuition fees (section 103A(b)(v))

During the reporting period, VSL-assisted students were charged a total of \$89,391,898 in course tuition fees. VSL-assisted students paid \$8,009,193 of their tuition fees up front in addition to the amounts paid in VET Student Loans.

Figure 5 provides a breakdown of tuition fees charged to VSL-assisted students, by month.

Figure 5: Tuition fees charged to VSL-assisted students by month



Tuition fees charged peaked in March 2017, commensurate with the peaks in value of loans paid for study undertaken and student numbers.

Additional VET student loan provider and course information

Tables 2 to 5 in the Appendix, and Table 6, an additional table provided as a separate excel spreadsheet, provide additional information on approved course providers and the eligible courses they offered during the reporting period.

In particular, these tables rank providers in order of VSL-assisted students (Table 2), value of VET Student Loans paid (Table 3), and rank courses in order of VSL-assisted students (Table 4) and in order of value of VET Student Loans paid (Table 5).

² Units reported as still in progress are excluded from the unit of study completion rate calculation. Providers report the final completion status of such units once completed (successfully or otherwise).

These tables also provide the following:

- VSL-assisted student numbers (Table 2 and 3) / course enrolment numbers³ (Tables 4 and 5)
- Equivalent Full-Time Student Load (EFTSL) by provider and by course
- tuition fees charged
- the amount of the tuition fees paid up-front (paid directly to the provider by the student, rather than deferred through a VSL loan)
- the value of VSL loans
- tuition fees per student (Tables 2 and 3) / tuition fees per course enrolment (Tables 4 and 5)
- tuition fees per EFTSL
- loan amount per student (Tables 2 and 3) / loan amount per course enrolment (Tables 4 and 5)
- loan amount per EFTSL
- enrolment, loans, tuition fees, students completing courses and unit of study completion rates by provider and course (Table 6).

Nine of the top ten providers ranked by value of loans paid in Table 3 were public providers (TAFEs/Table A universities).

In terms of student numbers, all of the top ten providers were public providers (Table 2).

The Diploma of Nursing is the highest ranking course both in terms of course enrolments and value of loans paid, as shown in Tables 4 and 5, respectively. Nursing, community services and counselling qualifications are popular with VSL students, as they were under VET FEE-HELP.

However, the Diploma of Business (now 6th in terms of course enrolment numbers) is no longer the most popular course as it was under VET FEE-HELP.

The Diploma of Leadership and Management's relative popularity has also fallen from the 4th most popular course under VET FEE-HELP in 2016 to 21st under VSL.

Moving up the ladder is the Diploma of Screen and Media, which did not rank in the top ten courses in 2016 under VET FEE-HELP, but is now ranked 4th in terms of student numbers and 2nd in value of loans paid.

³ Students can enrol in more than one course, so enrolment numbers will always be at greater than or equal to student numbers.

Appendix: List of Tables

- **Table 1:** VET Student Loans information relating to operation of the VET Student Loans program - Section 103A of VET Student Loans Act 2016
- **Table 2:** VSL providers ordered by VSL-assisted student numbers for the period 1 Jan 2017 to 30 Jun 2017
- **Table 3:** VSL providers ordered by value of VSL loans paid for the period 1 Jan 2017 to 30 Jun 2017
- **Table 4:** VSL courses ordered by VSL-assisted enrolments for the period 1 Jan 2017 to 30 Jun 2017
- **Table 5:** VSL courses ordered by VSL loans paid for the period 1 Jan 2017 to 30 Jun 2017
- **Table 6:** VSL provider course details for the period 1 Jan 2017 to 30 Jun 2017 (separate table in excel spreadsheet)

Table 1: VET Student Loans information relating to operation of the VET Student Loans program - Section 103A of VET Student Loans Act 2016

	Provider ID	Provider name 103A (b)(i)	Provider type	Students undertaking approved courses 103A (b)(iii)	Loans paid 103A (b)(ii)	Tuition fees charged 103A (b)(v)	Students completing approved courses 103A (b)(iv)	Unit of study completion rate (%)
1	7124	Academy of Information Technology Pty Ltd	Private	131	\$411,619	\$736,787	0	98.5
2	7403	Access Group Training Pty Limited	Private	123	\$296,429	\$296,429	0	86.5
3	7274	Access Training Institute Pty Ltd	Private	0	\$0	\$0	0	0.0
4	7158	Accredited Courses Australia Pty Ltd	Private	0	\$0	\$0	0	0.0
5	7039	ACTE Pty Ltd	Private	128	\$348,476	\$348,476	0	21.2
6	7405	Advanced Education Australia Pty Ltd	Private	< 5	\$3,300	\$3,300	0	0.0
7	7407	Air Gold Coast Pty. Ltd.	Private	19	\$411,901	\$431,206	2	89.0
8	4407	Alphacrucis College Limited	Private	13	\$53,070	\$53,070	0	69.4
9	7449	Anglican Church Property Trust Diocese of Canberra & Goulburn	Other Public	6	\$14,400	\$14,750	0	0.0
10	7819	Atkinson Training and Development Pty Limited	Private	< 5	\$8,400	\$8,400	0	0.0
11	7701	Aurora Training Institute Pty Ltd as trustee for the Aurora Trust	Private	21	\$34,655	\$34,655	0	21.1
12	7541	Australasian Beauty Therapy Academy Pty Ltd	Private	38	\$140,800	\$140,800	0	0.0
13	7345	Australia Moreton Education Group Pty Ltd	Private	< 5	\$8,333	\$9,999	0	0.0
14	7108	Australian Academy of Vocational Education and Trades Pty Ltd	Private	< 5	\$6,214	\$6,214	0	0.0
15	7092	Australian Careers Business College Pty Ltd	Private	133	\$700,961	\$702,211	0	98.0
16	3006	Australian Catholic University Limited	Private	178	\$530,180	\$536,000	0	0.0
17	7030	Australian College of Applied Education Pty Ltd	Private	0	\$0	\$0	0	0.0
18	7363	Australian College of Event Management Pty Ltd	Private	14	\$40,000	\$138,000	0	0.0
19	7568	Australian College of Finance Pty Limited	Private	0	\$0	\$0	0	0.0
20	7756	Australian College of Fitness and Bodywork Pty Ltd	Private	35	\$68,423	\$72,291	0	100.0
21	7189	Australian College of Health & Fitness Pty Ltd	Private	86	\$260,837	\$260,837	0	16.7
22	7026	Australian College of Sports Therapy Pty Ltd	Private	0	\$0	\$0	0	0.0
23	7012	Australian Education Group Pty Ltd	Private	32	\$126,667	\$247,567	0	0.0
24	7155	Australian Institute of Family Counselling Ltd	Private	114	\$249,400	\$251,720	0	89.9
25	7321	Australian Institute of Fashion Design Pty Ltd	Private	126	\$568,651	\$628,663	0	81.4

Provider ID	Provider name 103A (b)(i)	Provider type	Students undertaking approved courses 103A (b)(iii)	Loans paid 103A (b)(ii)	Tuition fees charged 103A (b)(v)	Students completing approved courses 103A (b)(iv)	Unit of study completion rate (%)	
26	7352	Australian Institute of Personal Trainers Pty Ltd	Private	0	\$0	\$0	0	0.0
27	7163	Australian National Memorial Theatre Limited	Private	17	\$59,934	\$63,934	0	94.6
28	7229	Australian Nursing & Midwifery Federation (SA Branch)	Private	13	\$77,747	\$83,320	0	0.0
29	7553	Australian Salesmasters Training Co. Pty Limited	Private	< 5	\$1,250	\$1,250	0	0.0
30	7646	Australian Skills Group Pty Ltd	Private	6	\$30,000	\$30,000	0	0.0
31	7143	Australian Wings Academy Pty Ltd	Private	10	\$259,899	\$262,659	1	98.7
32	7396	Australis College Pty Ltd	Private	276	\$563,392	\$563,573	2	40.5
33	2252	Avondale College Limited	Private	0	\$0	\$0	0	0.0
34	7009	Baptist Business College Ltd	Private	44	\$174,004	\$301,875	0	94.6
35	7094	Basair Australia Pty Ltd	Private	95	\$1,999,088	\$2,326,860	0	6.0
36	2246	Batchelor Institute of Indigenous Tertiary Education	Other Public	0	\$0	\$0	0	0.0
37	7203	BCA National Training Group Pty Ltd	Private	102	\$252,634	\$350,424	0	0.0
38	7144	Benchmark Resources Pty Ltd	Private	0	\$0	\$0	0	0.0
39	7082	Bendigo Kangan Institute	TAFE	183	\$302,564	\$480,011	0	42.6
40	4366	Box Hill Institute	TAFE	457	\$2,530,360	\$2,623,512	0	75.5
41	7360	Bruce Hartwig Flying School Pty Ltd	Private	10	\$218,852	\$218,852	0	0.0
42	4406	Canberra Institute of Technology	TAFE	161	\$324,365	\$355,056	4	77.7
43	7133	Canterbury Business College Pty Ltd	Private	0	\$0	\$0	0	0.0
44	7253	Careers Australia Education Institute Pty Ltd	Private	179	\$1,189,131	\$1,574,906	0	48.4
45	2200	Central Queensland University	Other Public	248	\$639,283	\$647,970	0	82.8
46	8073	Central Regional TAFE	TAFE	65	\$228,274	\$234,252	0	84.3
47	3001	Charles Darwin University	Other Public	0	\$0	\$0	0	0.0
48	7086	Charlton Brown Pty Ltd	Private	< 5	\$4,980	\$4,980	0	0.0
49	7073	Chisholm Institute of Technical and Further Education	TAFE	837	\$2,135,347	\$2,139,291	12	88.1
50	7387	Cinimod Enterprises Pty Ltd	Private	70	\$358,334	\$411,667	0	41.1
51	7429	CMA Training Group Pty Ltd	Private	69	\$306,689	\$306,689	0	55.2
52	7276	Contour Systems Pty Ltd	Private	5	\$16,668	\$23,658	0	100.0
53	7463	Cronin Pty Ltd	Private	5	\$20,000	\$36,000	0	88.9
54	7213	Dazzle-M Pty Ltd	Private	11	\$48,830	\$60,862	0	0.0
55	7742	Demi International Beauty Academy Pty Ltd	Private	115	\$536,835	\$536,835	0	96.6
56	7535	Department of Training and Workforce Development	TAFE	< 5	\$1,011	\$1,460	0	0.0
57	7111	Design College Australia Pty Ltd	Private	14	\$46,667	\$72,107	0	92.9
58	7347	Design Schools Australia Pty Ltd	Private	21	\$163,865	\$210,580	1	100.0
59	7620	Diversity Skills Training Pty Ltd	Private	0	\$0	\$0	0	0.0
60	2235	Edith Cowan University	Other Public	173	\$760,179	\$761,894	0	94.4
61	7020	Ella Bache College Pty Ltd	Private	54	\$199,190	\$260,333	1	0.0
62	7159	Emma's Secret Investments Pty Ltd	Private	91	\$397,500	\$397,500	0	0.0
63	7307	Empowerment Options Pty Ltd ATF Empowerment Options Family Trust	Private	0	\$0	\$0	0	0.0
64	7262	EQUALS International (Aust) Pty Ltd	Private	< 5	\$13,300	\$13,300	0	0.0
65	7068	Federation Training	TAFE	214	\$523,394	\$529,088	0	90.9
66	2154	Federation University Australia	Other Public	203	\$386,590	\$402,137	0	73.1
67	7172	Flight Training Adelaide Pty Ltd	Private	54	\$1,158,879	\$1,502,207	11	99.5
68	7767	Forsythes Training Pty Limited	Private	0	\$0	\$0	0	0.0
69	7230	Foundation for Education & Training Ltd	Private	5	\$7,465	\$23,180	0	60.9

Provider ID	Provider name 103A (b)(i)	Provider type	Students undertaking approved courses 103A (b)(iii)	Loans paid 103A (b)(ii)	Tuition fees charged 103A (b)(v)	Students completing approved courses 103A (b)(iv)	Unit of study completion rate (%)	
70	7566	Fox Endeavours Pty Ltd	Private	0	\$0	\$0	0	0.0
71	7729	Global Training Institute Pty Ltd	Private	< 5	\$5,880	\$5,880	0	0.0
72	7049	Golf Education Australia Pty Ltd	Private	60	\$526,657	\$563,331	0	97.0
73	4372	Gordon Institute of TAFE	TAFE	257	\$696,812	\$715,433	0	83.4
74	7145	Goulburn Ovens Institute of TAFE	TAFE	116	\$524,785	\$539,304	0	27.2
75	7370	GP Links Wide Bay Ltd	Private	< 5	\$2,200	\$2,200	0	100.0
76	7503	Harvest Education Technical College Pty. Ltd. as trustee for the HETC Trust	Private	61	\$203,313	\$203,313	0	0.0
77	7050	Headmasters Academy Pty Ltd	Private	6	\$30,000	\$54,000	0	79.0
78	7306	Health Careers International Pty Ltd	Private	72	\$168,664	\$385,892	0	0.0
79	7251	Health Skills Australia Pty Ltd	Private	207	\$1,254,849	\$2,131,322	0	1.0
80	7245	Holmes Commercial Colleges (Melbourne) Ltd	Private	5	\$21,440	\$42,430	0	0.0
81	4383	Holmesglen Institute of TAFE	TAFE	653	\$2,051,360	\$2,184,376	2	77.0
82	7585	House of Learning Pty Ltd	Private	0	\$0	\$0	0	0.0
83	7663	Innovative Business Training Pty Ltd	Private	< 5	\$30,000	\$30,000	0	0.0
84	7023	International Film School Sydney Pty Ltd	Private	52	\$329,967	\$329,967	0	47.5
85	7495	International Screen Academy Pty Limited	Private	0	\$0	\$0	0	0.0
86	7401	Jigsaw Consulting Group Pty Ltd	Private	42	\$355,236	\$356,068	0	13.6
87	7280	Job Training Institute Pty Ltd	Private	0	\$0	\$0	0	0.0
88	7661	Kiama Community College Incorporated	Private	9	\$13,230	\$13,230	0	82.6
89	7380	Kreate Pty Ltd	Private	22	\$20,516	\$29,166	0	83.3
90	7325	LaTrobe International Galleries Pty. Ltd.	Private	27	\$113,390	\$163,674	0	89.9
91	7591	Life Coaching Institute (Aust) Pty Ltd ATF The Life Coaching Institute Trust	Private	197	\$376,835	\$376,835	0	22.6
92	7473	LTT Group Pty Ltd	Private	0	\$0	\$0	0	0.0
93	7521	Malekhu Investments Pty. Ltd.	Private	< 5	\$11,665	\$11,665	0	0.0
94	7093	Marr Mooditj Training	Private	5	\$8,804	\$8,804	0	0.0
95	7235	Mater Education Limited	Private	105	\$391,250	\$607,500	0	48.9
96	7590	Melbourne College of Hairdressing Beauty Therapy & Natural Medicine Pty Ltd as Trustee for The Melbourne College Trust	Private	7	\$21,971	\$21,971	0	0.0
97	4363	Melbourne Polytechnic	TAFE	437	\$1,250,703	\$1,397,768	0	0.1
98	7052	Melbourne Rudolf Steiner Seminar Ltd	Private	21	\$49,166	\$96,350	0	100.0
99	7333	Menzies Institute of Technology Pty Ltd	Private	10	\$21,733	\$21,733	0	20.0
100	7135	Milneworth Pty Ltd	Private	8	\$32,000	\$35,056	0	0.0
101	7502	Mint Training Pty Limited	Private	0	\$0	\$0	0	0.0
102	7437	MVJ Enterprises Pty Ltd	Private	78	\$342,128	\$375,628	5	95.0
103	4336	Navitas Professional Institute Pty Ltd	Private	262	\$1,055,414	\$1,540,598	0	72.8
104	7461	New England Institute of Technology Pty Ltd	Private	< 5	\$6,667	\$6,667	0	0.0
105	7336	New York Film Academy Australia Pty Ltd	Private	128	\$682,083	\$684,583	0	64.6
106	7301	Niche Education Group Pty Ltd	Private	106	\$415,214	\$582,906	0	21.4
107	8071	North Metropolitan TAFE	TAFE	883	\$2,752,232	\$2,829,147	8	80.0
108	8060	North Regional TAFE	TAFE	5	\$7,263	\$8,923	0	40.0
109	7446	NQ Powertrain Pty Ltd	Private	0	\$0	\$0	0	0.0
110	7122	PA & WJ Dow Pty Ltd	Private	0	\$0	\$0	0	0.0
111	7007	ParaPharm Pty Ltd	Private	< 5	\$9,374	\$12,755	0	35.7
112	7358	Partners in Training Australia Pty. Ltd. as Trustee for Spain Family Trust	Private	26	\$70,592	\$70,592	0	0.0

Provider ID	Provider name 103A (b)(i)	Provider type	Students undertaking approved courses 103A (b)(iii)	Loans paid 103A (b)(ii)	Tuition fees charged 103A (b)(v)	Students completing approved courses 103A (b)(iv)	Unit of study completion rate (%)	
113	7080	Pharmaceutical Society of Australia Limited	Private	< 5	\$1,500	\$1,500	0	0.0
114	7427	Pragmatic Training Pty. Ltd.	Private	416	\$1,791,655	\$1,889,590	15	96.0
115	7197	Proteus Technologies Pty Ltd	Private	23	\$43,000	\$43,000	0	0.0
116	7479	Queensland Agricultural Training Colleges	Other Public	< 5	\$9,696	\$9,696	0	0.0
117	3034	Royal Melbourne Institute of Technology	Other Public	2,363	\$6,438,231	\$6,543,676	0	84.1
118	7278	Royal Victorian Aero Club	Private	< 5	\$55,824	\$55,824	1	100.0
119	7271	Rycki Symons Pty Limited	Private	27	\$127,659	\$210,009	1	92.1
120	4371	SAE Institute Pty Limited	Private	186	\$813,486	\$2,078,677	0	50.3
121	4397	Sarina Russo Schools Australia Pty Ltd	Private	< 5	\$5,000	\$5,000	0	0.0
122	7648	SCA Hair & Beauty Academy Pty Ltd	Private	10	\$80,000	\$125,000	0	100.0
123	7570	SEDA Group Pty Ltd	Private	45	\$201,390	\$203,892	0	0.0
124	7369	Shafston House College Ltd	Private	29	\$72,165	\$83,834	0	71.4
125	7378	Shakra Pty Ltd	Private	19	\$126,667	\$126,667	0	0.0
126	7309	SMR Learning Services Pty Ltd	Private	102	\$277,137	\$295,282	0	20.0
127	4468	South Metropolitan TAFE	TAFE	325	\$889,697	\$938,690	11	83.7
128	8072	South Regional TAFE	TAFE	63	\$135,512	\$150,360	0	86.3
129	7142	South West Institute of TAFE	TAFE	122	\$259,301	\$261,946	0	72.5
130	7412	Southern Aviation Pty Ltd	Private	15	\$324,360	\$356,180	0	0.0
131	7239	Southern Cross Education Institute Pty Ltd	Private	0	\$0	\$0	0	0.0
132	7316	St George & Sutherland Community College Inc	Private	0	\$0	\$0	0	0.0
133	7037	St Patrick's Business College Limited	Private	17	\$37,500	\$139,825	0	100.0
134	7312	Stirling Institute of Australia Pty Ltd	Private	0	\$0	\$0	0	0.0
135	7382	Strategix Training Group Pty Ltd	Private	68	\$216,416	\$223,955	0	31.1
136	7102	Sunraysia Institute of TAFE	TAFE	86	\$127,870	\$128,190	1	55.3
137	2177	Swinburne University of Technology	Other Public	825	\$3,128,174	\$3,500,743	4	85.6
138	7147	Sydney Film School Pty Ltd	Private	22	\$188,550	\$256,750	0	45.8
139	7041	Sydney Institute of Health Sciences Pty. Limited	Private	22	\$82,320	\$82,320	0	100.0
140	4450	TAFE Queensland	TAFE	3,962	\$13,041,380	\$15,067,577	227	72.9
141	7338	TAFE SA	TAFE	947	\$1,829,193	\$2,351,731	0	79.7
142	7826	Tandem College Pty Ltd	Private	73	\$225,347	\$225,347	0	0.0
143	7460	TasTAFE	TAFE	196	\$304,018	\$325,353	0	99.0
144	7075	Technical and Further Education Commission of NSW	TAFE	4,083	\$8,269,115	\$8,418,071	17	96.5
145	7028	The Academy of Interactive Entertainment Ltd	Private	116	\$298,990	\$1,038,239	0	60.8
146	7428	The Creche and Kindergarten Association Limited	Private	0	\$0	\$0	0	0.0
147	7329	The French Beauty Academy Pty Ltd	Private	14	\$63,480	\$65,000	0	0.0
148	7261	The International Golf Institute Pty Ltd	Private	0	\$0	\$0	0	0.0
149	7697	The Lady Gowrie Child Centre Melbourne Inc	Private	< 5	\$1,651	\$1,651	0	0.0
150	7056	The Malka Group Pty. Ltd.	Private	< 5	\$8,910	\$8,910	0	0.0
151	7465	The Mask Academy Pty Ltd ATF the Mask Academy Trust	Private	55	\$243,000	\$245,500	0	31.6
152	2148	The National Institute of Dramatic Art	Other Public	11	\$33,000	\$55,000	0	100.0
153	7683	The Redcliffe Aero Club	Private	0	\$0	\$0	0	0.0
154	3044	The University of Notre Dame Australia	Private	15	\$42,959	\$43,252	0	0.0
155	3019	The University of Queensland	Other Public	5	\$44,063	\$52,875	0	0.0
156	4375	Think: Colleges Pty Ltd	Private	58	\$257,888	\$293,489	0	23.1

	Provider ID	Provider name 103A (b)(i)	Provider type	Students undertaking approved courses 103A (b)(iii)	Loans paid 103A (b)(ii)	Tuition fees charged 103A (b)(v)	Students completing approved courses 103A (b)(iv)	Unit of study completion rate (%)
157	7131	Transformations - Pathways to Competence & Developing Excellence Pty Ltd	Private	79	\$132,739	\$132,739	0	3.8
158	7372	Unity College Australia Incorporated	Private	21	\$44,583	\$44,583	0	0.0
159	4377	UOWC Ltd	Private	35	\$188,276	\$279,843	0	80.7
160	3007	Victoria University	Other Public	690	\$2,560,215	\$2,617,841	0	12.8
161	7349	Victorian Fitness Academy Pty Ltd	Private	142	\$585,614	\$585,614	0	95.3
162	7478	Virtu Design Institute Pty Limited	Private	22	\$27,550	\$27,550	0	0.0
163	7205	Visual Concepts & Design Australia Pty Ltd	Private	10	\$40,605	\$43,405	0	0.0
164	4394	William Angliss Institute of TAFE	TAFE	67	\$47,701	\$225,426	0	73.2
165	7118	Wodonga Institute of TAFE	TAFE	147	\$216,186	\$223,470	1	23.2
166	7110	Workers Educational Association - Hunter	Private	0	\$0	\$0	0	0.0
167	7032	YourLife Health and Learning Inc	Private	48	\$118,871	\$136,170	0	0.0
		Total:		24,492	\$78,131,044	\$89,391,898	327	75.2

Table 2: VSL providers ordered by VSL-assisted student numbers for the period 1 Jan 2017 to 30 Jun 2017

Rank	Provider ID	Provider name	Students	EFTSL	Tuition fees	Paid upfront	Loans paid	Tuition fees per student	Tuition fees per EFTSL	Loans per student	Loans per EFTSL
1	7075	Technical and Further Education Commission of NSW	4,085	2,100.1	\$8,418,071	\$107,258	\$8,269,115	\$2,061	\$4,008	\$2,024	\$3,937
2	4450	TAFE Queensland	3,963	1,411.0	\$15,067,577	\$1,186,148	\$13,041,380	\$3,802	\$10,679	\$3,291	\$9,243
3	3034	Royal Melbourne Institute of Technology	2,363	1,053.9	\$6,543,676	\$88,612	\$6,438,231	\$2,769	\$6,209	\$2,725	\$6,109
4	7338	TAFE SA	948	376.6	\$2,351,731	\$501,205	\$1,829,193	\$2,481	\$6,245	\$1,930	\$4,857
5	8071	North Metropolitan TAFE	883	464.2	\$2,829,147	\$14,616	\$2,752,232	\$3,204	\$6,095	\$3,117	\$5,929
6	7073	Chisholm Institute of Technical and Further Education	837	308.4	\$2,139,291	\$3,944	\$2,135,347	\$2,556	\$6,936	\$2,551	\$6,924
7	2177	Swinburne University of Technology	827	393.2	\$3,500,743	\$185,069	\$3,128,174	\$4,233	\$8,902	\$3,783	\$7,955
8	3007	Victoria University	690	329.2	\$2,617,841	\$39,299	\$2,560,215	\$3,794	\$7,952	\$3,710	\$7,777
9	4383	Holmesglen Institute of TAFE	653	459.7	\$2,184,376	\$49,371	\$2,051,360	\$3,345	\$4,752	\$3,141	\$4,463
10	4366	Box Hill Institute	457	209.6	\$2,623,512	\$24,721	\$2,530,360	\$5,741	\$12,514	\$5,537	\$12,070
11	4363	Melbourne Polytechnic	437	225.6	\$1,397,768	\$0	\$1,250,703	\$3,199	\$6,196	\$2,862	\$5,544
12	7427	Pragmatic Training Pty. Ltd.	416	181.9	\$1,889,590	\$94,609	\$1,791,655	\$4,542	\$10,387	\$4,307	\$9,849
13	4468	South Metropolitan TAFE	325	150.0	\$938,690	\$19,087	\$889,697	\$2,888	\$6,257	\$2,738	\$5,930
14	7396	Australis College Pty Ltd	276	55.5	\$563,573	\$181	\$563,392	\$2,042	\$10,154	\$2,041	\$10,151
15	4336	Navitas Professional Institute Pty Ltd	262	107.3	\$1,540,598	\$478,523	\$1,055,414	\$5,880	\$14,359	\$4,028	\$9,837
16	4372	Gordon Institute of TAFE	257	196.4	\$715,433	\$18,620	\$696,812	\$2,784	\$3,643	\$2,711	\$3,548
17	2200	Central Queensland University	248	95.4	\$647,970	\$8,687	\$639,283	\$2,613	\$6,794	\$2,578	\$6,702
18	7068	Federation Training	214	124.3	\$529,088	\$5,695	\$523,394	\$2,472	\$4,256	\$2,446	\$4,210
19	7251	Health Skills Australia Pty Ltd	207	116.8	\$2,131,322	\$876,473	\$1,254,849	\$10,296	\$18,252	\$6,062	\$10,746
20	2154	Federation University Australia	203	48.4	\$402,137	\$15,547	\$386,590	\$1,981	\$8,317	\$1,904	\$7,996
21	7591	Life Coaching Institute (Aust) Pty Ltd ATF The Life Coaching Institute Trust	197	60.0	\$376,835	\$0	\$376,835	\$1,913	\$6,281	\$1,913	\$6,281
22	7460	TasTAFE	196	91.9	\$325,353	\$10,644	\$304,018	\$1,660	\$3,540	\$1,551	\$3,308
23	4371	SAE Institute Pty Limited	186	119.1	\$2,078,677	\$919,567	\$813,486	\$11,176	\$17,461	\$4,374	\$6,833
24	7082	Bendigo Kangan Institute	183	102.0	\$480,011	\$201	\$302,564	\$2,623	\$4,706	\$1,653	\$2,966
25	7253	Careers Australia Education Institute Pty Ltd	179	128.0	\$1,574,906	\$385,775	\$1,189,131	\$8,798	\$12,300	\$6,643	\$9,287
26	3006	Australian Catholic University Limited	178	104.1	\$536,000	\$5,820	\$530,180	\$3,011	\$5,149	\$2,979	\$5,093
27	2235	Edith Cowan University	173	121.3	\$761,894	\$1,715	\$760,179	\$4,404	\$6,281	\$4,394	\$6,267
28	4406	Canberra Institute of Technology	161	70.8	\$355,056	\$30,691	\$324,365	\$2,205	\$5,016	\$2,015	\$4,582
29	7118	Wodonga Institute of TAFE	147	47.5	\$223,470	\$7,283	\$216,186	\$1,520	\$4,704	\$1,471	\$4,550
30	7349	Victorian Fitness Academy Pty Ltd	142	60.0	\$585,614	\$0	\$585,614	\$4,124	\$9,760	\$4,124	\$9,760
31	7092	Australian Careers Business College Pty Ltd	133	82.8	\$702,211	\$1,250	\$700,961	\$5,280	\$8,477	\$5,270	\$8,462
32	7124	Academy of Information Technology Pty Ltd	131	50.2	\$736,787	\$278,237	\$411,619	\$5,624	\$14,662	\$3,142	\$8,191
33	7336	New York Film Academy Australia Pty Ltd	128	68.5	\$684,583	\$0	\$682,083	\$5,348	\$9,995	\$5,329	\$9,959
34	7039	ACTE Pty Ltd	128	59.5	\$348,476	\$0	\$348,476	\$2,722	\$5,857	\$2,722	\$5,857
35	7321	Australian Institute of Fashion Design Pty Ltd	126	57.0	\$628,663	\$57,246	\$568,651	\$4,989	\$11,035	\$4,513	\$9,982
36	7403	Access Group Training Pty Limited	123	45.6	\$296,429	\$0	\$296,429	\$2,410	\$6,495	\$2,410	\$6,495
37	7142	South West Institute of TAFE	122	42.3	\$261,946	\$2,645	\$259,301	\$2,147	\$6,197	\$2,125	\$6,134
38	7028	The Academy of Interactive Entertainment Ltd	116	50.8	\$1,038,239	\$739,249	\$298,990	\$8,950	\$20,430	\$2,578	\$5,883
39	7145	Goulburn Ovens Institute of TAFE	116	45.9	\$539,304	\$14,519	\$524,785	\$4,649	\$11,750	\$4,524	\$11,433
40	7742	Demi International Beauty Academy Pty Ltd	115	53.8	\$536,835	\$0	\$536,835	\$4,668	\$9,988	\$4,668	\$9,988
41	7155	Australian Institute of Family Counselling Ltd	114	25.6	\$251,720	\$2,320	\$249,400	\$2,208	\$9,829	\$2,188	\$9,738
42	7301	Niche Education Group Pty Ltd	106	42.0	\$582,906	\$163,967	\$415,214	\$5,499	\$13,882	\$3,917	\$9,888
43	7235	Mater Education Limited	105	72.8	\$607,500	\$202,500	\$391,250	\$5,786	\$8,351	\$3,726	\$5,378

Rank	Provider ID	Provider name	Students	EFTSL	Tuition fees	Paid upfront	Loans paid	Tuition fees per student	Tuition fees per EFTSL	Loans per student	Loans per EFTSL
44	7203	BCA National Training Group Pty Ltd	102	29.7	\$350,424	\$97,790	\$252,634	\$3,436	\$11,779	\$2,477	\$8,492
45	7309	SMR Learning Services Pty Ltd	102	29.4	\$295,282	\$11,478	\$277,137	\$2,895	\$10,030	\$2,717	\$9,414
46	7094	Basair Australia Pty Ltd	95	38.8	\$2,326,860	\$0	\$1,999,088	\$24,493	\$59,924	\$21,043	\$51,483
47	7159	Emma's Secret Investments Pty Ltd	91	43.8	\$397,500	\$0	\$397,500	\$4,368	\$9,086	\$4,368	\$9,086
48	7102	Sunraysia Institute of TAFE	86	43.3	\$128,190	\$320	\$127,870	\$1,491	\$2,964	\$1,487	\$2,957
49	7189	Australian College of Health & Fitness Pty Ltd	86	29.7	\$260,837	\$0	\$260,837	\$3,033	\$8,794	\$3,033	\$8,794
50	7131	Transformations - Pathways to Competence & Developing Excellence Pty Ltd	79	31.1	\$132,739	\$0	\$132,739	\$1,680	\$4,264	\$1,680	\$4,264
51	7437	MVJ Enterprises Pty Ltd	78	34.3	\$375,628	\$30,900	\$342,128	\$4,816	\$10,967	\$4,386	\$9,989
52	7826	Tandem College Pty Ltd	73	24.1	\$225,347	\$0	\$225,347	\$3,087	\$9,354	\$3,087	\$9,354
53	7306	Health Careers International Pty Ltd	72	32.5	\$385,892	\$212,255	\$168,664	\$5,360	\$11,877	\$2,343	\$5,191
54	7387	Cinimod Enterprises Pty Ltd	70	40.9	\$411,667	\$0	\$358,334	\$5,881	\$10,068	\$5,119	\$8,763
55	7429	CMA Training Group Pty Ltd	69	41.6	\$306,689	\$0	\$306,689	\$4,445	\$7,372	\$4,445	\$7,372
56	7382	Strategix Training Group Pty Ltd	68	24.4	\$223,955	\$5,635	\$216,416	\$3,293	\$9,167	\$3,183	\$8,859
57	4394	William Angliss Institute of TAFE	67	38.4	\$225,426	\$3,219	\$47,701	\$3,365	\$5,875	\$712	\$1,243
58	8073	Central Regional TAFE	65	41.6	\$234,252	\$3,073	\$228,274	\$3,604	\$5,628	\$3,512	\$5,485
59	8072	South Regional TAFE	63	24.8	\$150,360	\$606	\$135,512	\$2,387	\$6,060	\$2,151	\$5,462
60	7503	Harvest Education Technical College Pty. Ltd. as trustee for the HETC Trust	61	20.7	\$203,313	\$0	\$203,313	\$3,333	\$9,803	\$3,333	\$9,803
61	7049	Golf Education Australia Pty Ltd	60	33.8	\$563,331	\$0	\$526,657	\$9,389	\$16,667	\$8,778	\$15,582
62	4375	Think: Colleges Pty Ltd	58	17.9	\$293,489	\$34,308	\$257,888	\$5,060	\$16,405	\$4,446	\$14,415
63	7465	The Mask Academy Pty Ltd ATF the Mask Academy Trust	55	27.4	\$245,500	\$0	\$243,000	\$4,464	\$8,947	\$4,418	\$8,856
64	7172	Flight Training Adelaide Pty Ltd	54	37.8	\$1,502,207	\$81,105	\$1,158,879	\$27,819	\$39,720	\$21,461	\$30,642
65	7020	Ella Bache College Pty Ltd	54	20.0	\$260,333	\$61,143	\$199,190	\$4,821	\$13,030	\$3,689	\$9,969
66	7023	International Film School Sydney Pty Ltd	52	49.5	\$329,967	\$0	\$329,967	\$6,346	\$6,666	\$6,346	\$6,666
67	7032	YourLife Health and Learning Inc	48	16.9	\$136,170	\$17,300	\$118,871	\$2,837	\$8,077	\$2,476	\$7,050
68	7570	SEDA Group Pty Ltd	45	25.5	\$203,892	\$128	\$201,390	\$4,531	\$7,983	\$4,475	\$7,885
69	7009	Baptist Business College Ltd	44	19.3	\$301,875	\$125,371	\$174,004	\$6,861	\$15,682	\$3,955	\$9,039
70	7401	Jigsaw Consulting Group Pty Ltd	42	35.6	\$356,068	\$0	\$355,236	\$8,478	\$10,002	\$8,458	\$9,979
71	7541	Australasian Beauty Therapy Academy Pty Ltd	38	15.0	\$140,800	\$0	\$140,800	\$3,705	\$9,412	\$3,705	\$9,412
72	4377	UOWC Ltd	35	22.6	\$279,843	\$69,823	\$188,276	\$7,996	\$12,410	\$5,379	\$8,349
73	7756	Australian College of Fitness and Bodywork Pty Ltd	35	10.2	\$72,291	\$808	\$68,423	\$2,065	\$7,108	\$1,955	\$6,728
74	7012	Australian Education Group Pty Ltd	32	20.0	\$247,567	\$114,233	\$126,667	\$7,736	\$12,378	\$3,958	\$6,333
75	7369	Shafston House College Ltd	29	13.2	\$83,834	\$0	\$72,165	\$2,891	\$6,332	\$2,488	\$5,450
76	7271	Rycki Symons Pty Limited	27	13.5	\$210,009	\$44,435	\$127,659	\$7,778	\$15,556	\$4,728	\$9,456
77	7325	LaTrobe International Galleries Pty. Ltd.	27	12.6	\$163,674	\$41,613	\$113,390	\$6,062	\$12,980	\$4,200	\$8,992
78	7358	Partners in Training Australia Pty. Ltd. as Trustee for Spain Family Trust	26	13.0	\$70,592	\$0	\$70,592	\$2,715	\$5,430	\$2,715	\$5,430
79	7197	Proteus Technologies Pty Ltd	23	11.2	\$43,000	\$0	\$43,000	\$1,870	\$3,826	\$1,870	\$3,826
80	7147	Sydney Film School Pty Ltd	22	9.9	\$256,750	\$68,200	\$188,550	\$11,670	\$25,987	\$8,570	\$19,084
81	7041	Sydney Institute of Health Sciences Pty. Limited	22	7.7	\$82,320	\$0	\$82,320	\$3,742	\$10,747	\$3,742	\$10,747
82	7380	Kreate Pty Ltd	22	5.0	\$29,166	\$0	\$20,516	\$1,326	\$5,857	\$933	\$4,120
83	7478	Virtu Design Institute Pty Limited	22	3.0	\$27,550	\$0	\$27,550	\$1,252	\$9,276	\$1,252	\$9,276
84	7347	Design Schools Australia Pty Ltd	21	12.9	\$210,580	\$46,715	\$163,865	\$10,028	\$16,274	\$7,803	\$12,663
85	7052	Melbourne Rudolf Steiner Seminar Ltd	21	10.3	\$96,350	\$45,934	\$49,166	\$4,588	\$9,400	\$2,341	\$4,797
86	7701	Aurora Training Institute Pty Ltd as trustee for the Aurora Trust	21	8.9	\$34,655	\$0	\$34,655	\$1,650	\$3,889	\$1,650	\$3,889
87	7372	Unity College Australia Incorporated	21	8.9	\$44,583	\$0	\$44,583	\$2,123	\$5,004	\$2,123	\$5,004
88	7378	Shakra Pty Ltd	19	12.5	\$126,667	\$0	\$126,667	\$6,667	\$10,101	\$6,667	\$10,101
89	7407	Air Gold Coast Pty. Ltd.	19	6.6	\$431,206	\$1,649	\$411,901	\$22,695	\$65,533	\$21,679	\$62,599

Rank	Provider ID	Provider name	Students	EFTSL	Tuition fees	Paid upfront	Loans paid	Tuition fees per student	Tuition fees per EFTSL	Loans per student	Loans per EFTSL
90	7037	St Patrick's Business College Limited	17	8.5	\$139,825	\$97,325	\$37,500	\$8,225	\$16,450	\$2,206	\$4,412
91	7163	Australian National Memorial Theatre Limited	17	7.3	\$63,934	\$4,000	\$59,934	\$3,761	\$8,710	\$3,526	\$4,165
92	3044	The University of Notre Dame Australia	15	6.9	\$43,252	\$0	\$42,959	\$2,883	\$6,296	\$2,864	\$6,253
93	7412	Southern Aviation Pty Ltd	15	5.3	\$356,180	\$0	\$324,360	\$23,745	\$67,715	\$21,624	\$61,665
94	7329	The French Beauty Academy Pty Ltd	14	6.5	\$65,000	\$1,520	\$63,480	\$4,643	\$10,000	\$4,534	\$9,766
95	7111	Design College Australia Pty Ltd	14	4.8	\$72,107	\$25,440	\$46,667	\$5,150	\$15,148	\$3,333	\$9,804
96	7363	Australian College of Event Management Pty Ltd	14	3.8	\$138,000	\$98,000	\$40,000	\$9,857	\$36,800	\$2,857	\$10,667
97	7229	Australian Nursing & Midwifery Federation (SA Branch)	13	13.9	\$83,320	\$0	\$77,747	\$6,409	\$5,973	\$5,981	\$5,573
98	4407	Alphacrucis College Limited	13	5.4	\$53,070	\$0	\$53,070	\$4,082	\$9,756	\$4,082	\$9,756
99	7213	Dazzle-M Pty Ltd	11	6.7	\$60,862	\$2,152	\$48,830	\$5,533	\$9,070	\$4,439	\$7,277
100	2148	The National Institute of Dramatic Art	11	3.6	\$55,000	\$22,000	\$33,000	\$5,000	\$15,152	\$3,000	\$9,091
101	7648	SCA Hair & Beauty Academy Pty Ltd	10	12.5	\$125,000	\$0	\$80,000	\$12,500	\$10,000	\$8,000	\$6,400
102	7143	Australian Wings Academy Pty Ltd	10	3.9	\$262,659	\$2,760	\$259,899	\$26,266	\$66,834	\$25,990	\$66,132
103	7333	Menzies Institute of Technology Pty Ltd	10	3.5	\$21,733	\$0	\$21,733	\$2,173	\$6,210	\$2,173	\$6,210
104	7205	Visual Concepts & Design Australia Pty Ltd	10	3.3	\$43,405	\$2,800	\$40,605	\$4,341	\$13,035	\$4,061	\$12,194
105	7360	Bruce Hartwig Flying School Pty Ltd	10	3.0	\$218,852	\$0	\$218,852	\$21,885	\$72,951	\$21,885	\$72,951
106	7661	Kiama Community College Incorporated	9	4.3	\$13,230	\$0	\$13,230	\$1,470	\$3,084	\$1,470	\$3,084
107	7135	Milneworth Pty Ltd	8	2.6	\$35,056	\$3,056	\$32,000	\$4,382	\$13,279	\$4,000	\$12,121
108	7590	Melbourne College of Hairdressing Beauty Therapy & Natural Medicine Pty Ltd as Trustee for The Melbourne College Trust	7	3.3	\$21,971	\$0	\$21,971	\$3,139	\$6,678	\$3,139	\$6,678
109	7449	Anglican Church Property Trust Diocese of Canberra & Goulburn	6	3.0	\$14,750	\$350	\$14,400	\$2,458	\$4,917	\$2,400	\$4,800
110	7646	Australian Skills Group Pty Ltd	6	2.0	\$30,000	\$0	\$30,000	\$5,000	\$15,000	\$5,000	\$15,000
111	7050	Headmasters Academy Pty Ltd	6	2.0	\$54,000	\$24,000	\$30,000	\$9,000	\$27,136	\$5,000	\$15,075
112	3019	The University of Queensland	5	5.0	\$52,875	\$8,813	\$44,063	\$10,575	\$10,575	\$8,813	\$8,813
113	7245	Holmes Commercial Colleges (Melbourne) Ltd	5	2.8	\$42,430	\$20,990	\$21,440	\$8,486	\$15,429	\$4,288	\$7,796
114	7463	Cronin Pty Ltd	5	2.3	\$36,000	\$13,500	\$20,000	\$7,200	\$16,000	\$4,000	\$8,889
115	7230	Foundation for Education & Training Ltd	5	2.0	\$23,180	\$15,715	\$7,465	\$4,636	\$11,648	\$1,493	\$3,751
116	8060	North Regional TAFE	5	1.9	\$8,923	\$0	\$7,263	\$1,785	\$4,600	\$1,453	\$3,744
117	7093	Marr Mooditj Training	5	1.7	\$8,804	\$0	\$8,804	\$1,761	\$5,240	\$1,761	\$5,240
118	7276	Contour Systems Pty Ltd	5	1.7	\$23,658	\$6,990	\$16,668	\$4,732	\$14,166	\$3,334	\$9,981
119	7663	Innovative Business Training Pty Ltd	< 5	n.p.	\$30,000	\$0	\$30,000	n.p.	n.p.	n.p.	n.p.
120	7819	Atkinson Training and Development Pty Limited	< 5	n.p.	\$8,400	\$0	\$8,400	n.p.	n.p.	n.p.	n.p.
121	7056	The Malka Group Pty. Ltd.	< 5	n.p.	\$8,910	\$0	\$8,910	n.p.	n.p.	n.p.	n.p.
122	7461	New England Institute of Technology Pty Ltd	< 5	n.p.	\$6,667	\$0	\$6,667	n.p.	n.p.	n.p.	n.p.
123	7262	EQUALS International (Aust) Pty Ltd	< 5	n.p.	\$13,300	\$0	\$13,300	n.p.	n.p.	n.p.	n.p.
124	7007	ParaPharm Pty Ltd	< 5	n.p.	\$12,755	\$0	\$9,374	n.p.	n.p.	n.p.	n.p.
125	7521	Malekhu Investments Pty. Ltd.	< 5	n.p.	\$11,665	\$0	\$11,665	n.p.	n.p.	n.p.	n.p.
126	7345	Australia Moreton Education Group Pty Ltd	< 5	n.p.	\$9,999	\$0	\$8,333	n.p.	n.p.	n.p.	n.p.
127	7108	Australian Academy of Vocational Education and Trades Pty Ltd	< 5	n.p.	\$6,214	\$0	\$6,214	n.p.	n.p.	n.p.	n.p.
128	7278	Royal Victorian Aero Club	< 5	n.p.	\$55,824	\$0	\$55,824	n.p.	n.p.	n.p.	n.p.
129	7479	Queensland Agricultural Training Colleges	< 5	n.p.	\$9,696	\$0	\$9,696	n.p.	n.p.	n.p.	n.p.
130	7697	The Lady Gowrie Child Centre Melbourne Inc	< 5	n.p.	\$1,651	\$0	\$1,651	n.p.	n.p.	n.p.	n.p.
131	4397	Sarina Russo Schools Australia Pty Ltd	< 5	n.p.	\$5,000	\$0	\$5,000	n.p.	n.p.	n.p.	n.p.
132	7086	Charlton Brown Pty Ltd	< 5	n.p.	\$4,980	\$0	\$4,980	n.p.	n.p.	n.p.	n.p.
133	7729	Global Training Institute Pty Ltd	< 5	n.p.	\$5,880	\$0	\$5,880	n.p.	n.p.	n.p.	n.p.
134	7080	Pharmaceutical Society of Australia Limited	< 5	n.p.	\$1,500	\$0	\$1,500	n.p.	n.p.	n.p.	n.p.

Rank	Provider ID	Provider name	Students	EFTSL	Tuition fees	Paid upfront	Loans paid	Tuition fees per student	Tuition fees per EFTSL	Loans per student	Loans per EFTSL
135	7553	Australian Salesmasters Training Co. Pty Limited	< 5	n.p.	\$1,250	\$0	\$1,250	n.p.	n.p.	n.p.	n.p.
136	7405	Advanced Education Australia Pty Ltd	< 5	n.p.	\$3,300	\$0	\$3,300	n.p.	n.p.	n.p.	n.p.
137	7370	GP Links Wide Bay Ltd	< 5	n.p.	\$2,200	\$0	\$2,200	n.p.	n.p.	n.p.	n.p.
138	7535	Department of Training and Workforce Development	< 5	n.p.	\$1,460	\$449	\$1,011	n.p.	n.p.	n.p.	n.p.
		Total	24,492	11,230.9	\$89,391,898	\$8,009,193	\$78,131,044	\$3,650	\$7,959	\$3,190	\$6,957

Table 3: VSL providers ordered by VSL loans paid for the period 1 Jan 2017 to 30 Jun 2017

Rank	Provider ID	Provider name	Students	EFTSL	Tuition fees	Paid upfront	Loans paid	Tuition fees per student	Tuition fees per EFTSL	Loans per student	Loans per EFTSL
1	4450	TAFE Queensland	3,963	1,411.0	\$15,067,577	\$1,186,148	\$13,041,380	\$3,802	\$10,679	\$3,291	\$9,243
2	7075	Technical and Further Education Commission of NSW	4,085	2,100.1	\$8,418,071	\$107,258	\$8,269,115	\$2,061	\$4,008	\$2,024	\$3,937
3	3034	Royal Melbourne Institute of Technology	2,363	1,053.9	\$6,543,676	\$88,612	\$6,438,231	\$2,769	\$6,209	\$2,725	\$6,109
4	2177	Swinburne University of Technology	827	393.2	\$3,500,743	\$185,069	\$3,128,174	\$4,233	\$8,902	\$3,783	\$7,955
5	8071	North Metropolitan TAFE	883	464.2	\$2,829,147	\$14,616	\$2,752,232	\$3,204	\$6,095	\$3,117	\$5,929
6	3007	Victoria University	690	329.2	\$2,617,841	\$39,299	\$2,560,215	\$3,794	\$7,952	\$3,710	\$7,777
7	4366	Box Hill Institute	457	209.6	\$2,623,512	\$24,721	\$2,530,360	\$5,741	\$12,514	\$5,537	\$12,070
8	7073	Chisholm Institute of Technical and Further Education	837	308.4	\$2,139,291	\$3,944	\$2,135,347	\$2,556	\$6,936	\$2,551	\$6,924
9	4383	Holmesglen Institute of TAFE	653	459.7	\$2,184,376	\$49,371	\$2,051,360	\$3,345	\$4,752	\$3,141	\$4,463
10	7094	Basair Australia Pty Ltd	95	38.8	\$2,326,860	\$0	\$1,999,088	\$24,493	\$59,924	\$21,043	\$51,483
11	7338	TAFE SA	948	376.6	\$2,351,731	\$501,205	\$1,829,193	\$2,481	\$6,245	\$1,930	\$4,857
12	7427	Pragmatic Training Pty. Ltd.	416	181.9	\$1,889,590	\$94,609	\$1,791,655	\$4,542	\$10,387	\$4,307	\$9,849
13	7251	Health Skills Australia Pty Ltd	207	116.8	\$2,131,322	\$876,473	\$1,254,849	\$10,296	\$18,252	\$6,062	\$10,746
14	4363	Melbourne Polytechnic	437	225.6	\$1,397,768	\$0	\$1,250,703	\$3,199	\$6,196	\$2,862	\$5,544
15	7253	Careers Australia Education Institute Pty Ltd	179	128.0	\$1,574,906	\$385,775	\$1,189,131	\$8,798	\$12,300	\$6,643	\$9,287
16	7172	Flight Training Adelaide Pty Ltd	54	37.8	\$1,502,207	\$81,105	\$1,158,879	\$27,819	\$39,720	\$21,461	\$30,642
17	4336	Navitas Professional Institute Pty Ltd	262	107.3	\$1,540,598	\$478,523	\$1,055,414	\$5,880	\$14,359	\$4,028	\$9,837
18	4468	South Metropolitan TAFE	325	150.0	\$938,690	\$19,087	\$889,697	\$2,888	\$6,257	\$2,738	\$5,930
19	4371	SAE Institute Pty Limited	186	119.1	\$2,078,677	\$919,567	\$813,486	\$11,176	\$17,461	\$4,374	\$6,833
20	2235	Edith Cowan University	173	121.3	\$761,894	\$1,715	\$760,179	\$4,404	\$6,281	\$4,394	\$6,267
21	7092	Australian Careers Business College Pty Ltd	133	82.8	\$702,211	\$1,250	\$700,961	\$5,280	\$8,477	\$5,270	\$8,462
22	4372	Gordon Institute of TAFE	257	196.4	\$715,433	\$18,620	\$696,812	\$2,784	\$3,643	\$2,711	\$3,548
23	7336	New York Film Academy Australia Pty Ltd	128	68.5	\$684,583	\$0	\$682,083	\$5,348	\$9,995	\$5,329	\$9,959
24	2200	Central Queensland University	248	95.4	\$647,970	\$8,687	\$639,283	\$2,613	\$6,794	\$2,578	\$6,702
25	7349	Victorian Fitness Academy Pty Ltd	142	60.0	\$585,614	\$0	\$585,614	\$4,124	\$9,760	\$4,124	\$9,760
26	7321	Australian Institute of Fashion Design Pty Ltd	126	57.0	\$628,663	\$57,246	\$568,651	\$4,989	\$11,035	\$4,513	\$9,982
27	7396	Australis College Pty Ltd	276	55.5	\$563,573	\$181	\$563,392	\$2,042	\$10,154	\$2,041	\$10,151
28	7742	Demi International Beauty Academy Pty Ltd	115	53.8	\$536,835	\$0	\$536,835	\$4,668	\$9,988	\$4,668	\$9,988
29	3006	Australian Catholic University Limited	178	104.1	\$536,000	\$5,820	\$530,180	\$3,011	\$5,149	\$2,979	\$5,093
30	7049	Golf Education Australia Pty Ltd	60	33.8	\$563,331	\$0	\$526,657	\$9,389	\$16,667	\$8,778	\$15,582
31	7145	Goulburn Ovens Institute of TAFE	116	45.9	\$539,304	\$14,519	\$524,785	\$4,649	\$11,750	\$4,524	\$11,433
32	7068	Federation Training	214	124.3	\$529,088	\$5,695	\$523,394	\$2,472	\$4,256	\$2,446	\$4,210
33	7301	Niche Education Group Pty Ltd	106	42.0	\$582,906	\$163,967	\$415,214	\$5,499	\$13,882	\$3,917	\$9,888
34	7407	Air Gold Coast Pty. Ltd.	19	6.6	\$431,206	\$1,649	\$411,901	\$22,695	\$65,533	\$21,679	\$62,599
35	7124	Academy of Information Technology Pty Ltd	131	50.2	\$736,787	\$278,237	\$411,619	\$5,624	\$14,662	\$3,142	\$8,191
36	7159	Emma's Secret Investments Pty Ltd	91	43.8	\$397,500	\$0	\$397,500	\$4,368	\$9,086	\$4,368	\$9,086
37	7235	Mater Education Limited	105	72.8	\$607,500	\$202,500	\$391,250	\$5,786	\$8,351	\$3,726	\$5,378
38	2154	Federation University Australia	203	48.4	\$402,137	\$15,547	\$386,590	\$1,981	\$8,317	\$1,904	\$7,996
39	7591	Life Coaching Institute (Aust) Pty Ltd ATF The Life Coaching Institute Trust	197	60.0	\$376,835	\$0	\$376,835	\$1,913	\$6,281	\$1,913	\$6,281
40	7387	Cinimod Enterprises Pty Ltd	70	40.9	\$411,667	\$0	\$358,334	\$5,881	\$10,068	\$5,119	\$8,763
41	7401	Jigsaw Consulting Group Pty Ltd	42	35.6	\$356,068	\$0	\$355,236	\$8,478	\$10,002	\$8,458	\$9,979
42	7039	ACTE Pty Ltd	128	59.5	\$348,476	\$0	\$348,476	\$2,722	\$5,857	\$2,722	\$5,857
43	7437	MVJ Enterprises Pty Ltd	78	34.3	\$375,628	\$30,900	\$342,128	\$4,816	\$10,967	\$4,386	\$9,989

Rank	Provider ID	Provider name	Students	EFTSL	Tuition fees	Paid upfront	Loans paid	Tuition fees per student	Tuition fees per EFTSL	Loans per student	Loans per EFTSL
44	7023	International Film School Sydney Pty Ltd	52	49.5	\$329,967	\$0	\$329,967	\$6,346	\$6,666	\$6,346	\$6,666
45	4406	Canberra Institute of Technology	161	70.8	\$355,056	\$30,691	\$324,365	\$2,205	\$5,016	\$2,015	\$4,582
46	7412	Southern Aviation Pty Ltd	15	5.3	\$356,180	\$0	\$324,360	\$23,745	\$67,715	\$21,624	\$61,665
47	7429	CMA Training Group Pty Ltd	69	41.6	\$306,689	\$0	\$306,689	\$4,445	\$7,372	\$4,445	\$7,372
48	7460	TasTAFE	196	91.9	\$325,353	\$10,644	\$304,018	\$1,660	\$3,540	\$1,551	\$3,308
49	7082	Bendigo Kangan Institute	183	102.0	\$480,011	\$201	\$302,564	\$2,623	\$4,706	\$1,653	\$2,966
50	7028	The Academy of Interactive Entertainment Ltd	116	50.8	\$1,038,239	\$739,249	\$298,990	\$8,950	\$20,430	\$2,578	\$5,883
51	7403	Access Group Training Pty Limited	123	45.6	\$296,429	\$0	\$296,429	\$2,410	\$6,495	\$2,410	\$6,495
52	7309	SMR Learning Services Pty Ltd	102	29.4	\$295,282	\$11,478	\$277,137	\$2,895	\$10,030	\$2,717	\$9,414
53	7189	Australian College of Health & Fitness Pty Ltd	86	29.7	\$260,837	\$0	\$260,837	\$3,033	\$8,794	\$3,033	\$8,794
54	7143	Australian Wings Academy Pty Ltd	10	3.9	\$262,659	\$2,760	\$259,899	\$26,266	\$66,834	\$25,990	\$66,132
55	7142	South West Institute of TAFE	122	42.3	\$261,946	\$2,645	\$259,301	\$2,147	\$6,197	\$2,125	\$6,134
56	4375	Think: Colleges Pty Ltd	58	17.9	\$293,489	\$34,308	\$257,888	\$5,060	\$16,405	\$4,446	\$14,415
57	7203	BCA National Training Group Pty Ltd	102	29.7	\$350,424	\$97,790	\$252,634	\$3,436	\$11,779	\$2,477	\$8,492
58	7155	Australian Institute of Family Counselling Ltd	114	25.6	\$251,720	\$2,320	\$249,400	\$2,208	\$9,829	\$2,188	\$9,738
59	7465	The Mask Academy Pty Ltd ATF the Mask Academy Trust	55	27.4	\$245,500	\$0	\$243,000	\$4,464	\$8,947	\$4,418	\$8,856
60	8073	Central Regional TAFE	65	41.6	\$234,252	\$3,073	\$228,274	\$3,604	\$5,628	\$3,512	\$5,485
61	7826	Tandem College Pty Ltd	73	24.1	\$225,347	\$0	\$225,347	\$3,087	\$9,354	\$3,087	\$9,354
62	7360	Bruce Hartwig Flying School Pty Ltd	10	3.0	\$218,852	\$0	\$218,852	\$21,885	\$72,951	\$21,885	\$72,951
63	7382	Strategix Training Group Pty Ltd	68	24.4	\$223,955	\$5,635	\$216,416	\$3,293	\$9,167	\$3,183	\$8,859
64	7118	Wodonga Institute of TAFE	147	47.5	\$223,470	\$7,283	\$216,186	\$1,520	\$4,704	\$1,471	\$4,550
65	7503	Harvest Education Technical College Pty. Ltd. as trustee for the HETC Trust	61	20.7	\$203,313	\$0	\$203,313	\$3,333	\$9,803	\$3,333	\$9,803
66	7570	SEDA Group Pty Ltd	45	25.5	\$203,892	\$128	\$201,390	\$4,531	\$7,983	\$4,475	\$7,885
67	7020	Ella Bache College Pty Ltd	54	20.0	\$260,333	\$61,143	\$199,190	\$4,821	\$13,030	\$3,689	\$9,969
68	7147	Sydney Film School Pty Ltd	22	9.9	\$256,750	\$68,200	\$188,550	\$11,670	\$25,987	\$8,570	\$19,084
69	4377	UOWC Ltd	35	22.6	\$279,843	\$69,823	\$188,276	\$7,996	\$12,410	\$5,379	\$8,349
70	7009	Baptist Business College Ltd	44	19.3	\$301,875	\$125,371	\$174,004	\$6,861	\$15,682	\$3,955	\$9,039
71	7306	Health Careers International Pty Ltd	72	32.5	\$385,892	\$212,255	\$168,664	\$5,360	\$11,877	\$2,343	\$5,191
72	7347	Design Schools Australia Pty Ltd	21	12.9	\$210,580	\$46,715	\$163,865	\$10,028	\$16,274	\$7,803	\$12,663
73	7541	Australasian Beauty Therapy Academy Pty Ltd	38	15.0	\$140,800	\$0	\$140,800	\$3,705	\$9,412	\$3,705	\$9,412
74	8072	South Regional TAFE	63	24.8	\$150,360	\$606	\$135,512	\$2,387	\$6,060	\$2,151	\$5,462
75	7131	Transformations - Pathways to Competence & Developing Excellence Pty Ltd	79	31.1	\$132,739	\$0	\$132,739	\$1,680	\$4,264	\$1,680	\$4,264
76	7102	Sunraysia Institute of TAFE	86	43.3	\$128,190	\$320	\$127,870	\$1,491	\$2,964	\$1,487	\$2,957
77	7271	Rycki Symons Pty Limited	27	13.5	\$210,009	\$44,435	\$127,659	\$7,778	\$15,556	\$4,728	\$9,456
78	7012	Australian Education Group Pty Ltd	32	20.0	\$247,567	\$114,233	\$126,667	\$7,736	\$12,378	\$3,958	\$6,333
79	7378	Shakra Pty Ltd	19	12.5	\$126,667	\$0	\$126,667	\$6,667	\$10,101	\$6,667	\$10,101
80	7032	YourLife Health and Learning Inc	48	16.9	\$136,170	\$17,300	\$118,871	\$2,837	\$8,077	\$2,476	\$7,050
81	7325	LaTrobe International Galleries Pty. Ltd.	27	12.6	\$163,674	\$41,613	\$113,390	\$6,062	\$12,980	\$4,200	\$8,992
82	7041	Sydney Institute of Health Sciences Pty. Limited	22	7.7	\$82,320	\$0	\$82,320	\$3,742	\$10,747	\$3,742	\$10,747
83	7648	SCA Hair & Beauty Academy Pty Ltd	10	12.5	\$125,000	\$0	\$80,000	\$12,500	\$10,000	\$8,000	\$6,400
84	7229	Australian Nursing & Midwifery Federation (SA Branch)	13	13.9	\$83,320	\$0	\$77,747	\$6,409	\$5,973	\$5,981	\$5,573
85	7369	Shafston House College Ltd	29	13.2	\$83,834	\$0	\$72,165	\$2,891	\$6,332	\$2,488	\$5,450
86	7358	Partners in Training Australia Pty. Ltd. as Trustee for Spain Family Trust	26	13.0	\$70,592	\$0	\$70,592	\$2,715	\$5,430	\$2,715	\$5,430
87	7756	Australian College of Fitness and Bodywork Pty Ltd	35	10.2	\$72,291	\$808	\$68,423	\$2,065	\$7,108	\$1,955	\$6,728
88	7329	The French Beauty Academy Pty Ltd	14	6.5	\$65,000	\$1,520	\$63,480	\$4,643	\$10,000	\$4,534	\$9,766

Rank	Provider ID	Provider name	Students	EFTSL	Tuition fees	Paid upfront	Loans paid	Tuition fees per student	Tuition fees per EFTSL	Loans per student	Loans per EFTSL
89	7163	Australian National Memorial Theatre Limited	17	7.3	\$63,934	\$4,000	\$59,934	\$3,761	\$8,710	\$3,526	\$8,165
90	7278	Royal Victorian Aero Club	< 5	n.p.	\$55,824	\$0	\$55,824	n.p.	n.p.	n.p.	n.p.
91	4407	Alphacrucis College Limited	13	5.4	\$53,070	\$0	\$53,070	\$4,082	\$9,756	\$4,082	\$9,756
92	7052	Melbourne Rudolf Steiner Seminar Ltd	21	10.3	\$96,350	\$45,934	\$49,166	\$4,588	\$9,400	\$2,341	\$4,797
93	7213	Dazzle-M Pty Ltd	11	6.7	\$60,862	\$2,152	\$48,830	\$5,533	\$9,070	\$4,439	\$7,277
94	4394	William Angliss Institute of TAFE	67	38.4	\$225,426	\$3,219	\$47,701	\$3,365	\$5,875	\$712	\$1,243
95	7111	Design College Australia Pty Ltd	14	4.8	\$72,107	\$25,440	\$46,667	\$5,150	\$15,148	\$3,333	\$9,804
96	7372	Unity College Australia Incorporated	21	8.9	\$44,583	\$0	\$44,583	\$2,123	\$5,004	\$2,123	\$5,004
97	3019	The University of Queensland	5	5.0	\$52,875	\$8,813	\$44,063	\$10,575	\$10,575	\$8,813	\$8,813
98	7197	Proteus Technologies Pty Ltd	23	11.2	\$43,000	\$0	\$43,000	\$1,870	\$3,826	\$1,870	\$3,826
99	3044	The University of Notre Dame Australia	15	6.9	\$43,252	\$0	\$42,959	\$2,883	\$6,296	\$2,864	\$6,253
100	7205	Visual Concepts & Design Australia Pty Ltd	10	3.3	\$43,405	\$2,800	\$40,605	\$4,341	\$13,035	\$4,061	\$12,194
101	7363	Australian College of Event Management Pty Ltd	14	3.8	\$138,000	\$98,000	\$40,000	\$9,857	\$36,800	\$2,857	\$10,667
102	7037	St Patrick's Business College Limited	17	8.5	\$139,825	\$97,325	\$37,500	\$8,225	\$16,450	\$2,206	\$4,412
103	7701	Aurora Training Institute Pty Ltd as trustee for the Aurora Trust	21	8.9	\$34,655	\$0	\$34,655	\$1,650	\$3,889	\$1,650	\$3,889
104	2148	The National Institute of Dramatic Art	11	3.6	\$55,000	\$22,000	\$33,000	\$5,000	\$15,152	\$3,000	\$9,091
105	7135	Milneworth Pty Ltd	8	2.6	\$35,056	\$3,056	\$32,000	\$4,382	\$13,279	\$4,000	\$12,121
106	7646	Australian Skills Group Pty Ltd	6	2.0	\$30,000	\$0	\$30,000	\$5,000	\$15,000	\$5,000	\$15,000
107	7050	Headmasters Academy Pty Ltd	6	2.0	\$54,000	\$24,000	\$30,000	\$9,000	\$27,136	\$5,000	\$15,075
108	7663	Innovative Business Training Pty Ltd	< 5	n.p.	\$30,000	\$0	\$30,000	n.p.	n.p.	n.p.	n.p.
109	7478	Virtu Design Institute Pty Limited	22	3.0	\$27,550	\$0	\$27,550	\$1,252	\$9,276	\$1,252	\$9,276
110	7590	Melbourne College of Hairdressing Beauty Therapy & Natural Medicine Pty Ltd as Trustee for The Melbourne College Trust	7	3.3	\$21,971	\$0	\$21,971	\$3,139	\$6,678	\$3,139	\$6,678
111	7333	Menzies Institute of Technology Pty Ltd	10	3.5	\$21,733	\$0	\$21,733	\$2,173	\$6,210	\$2,173	\$6,210
112	7245	Holmes Commercial Colleges (Melbourne) Ltd	5	2.8	\$42,430	\$20,990	\$21,440	\$8,486	\$15,429	\$4,288	\$7,796
113	7380	Kreate Pty Ltd	22	5.0	\$29,166	\$0	\$20,516	\$1,326	\$5,857	\$933	\$4,120
114	7463	Cronin Pty Ltd	5	2.3	\$36,000	\$13,500	\$20,000	\$7,200	\$16,000	\$4,000	\$8,889
115	7276	Contour Systems Pty Ltd	5	1.7	\$23,658	\$6,990	\$16,668	\$4,732	\$14,166	\$3,334	\$9,981
116	7449	Anglican Church Property Trust Diocese of Canberra & Goulburn	6	3.0	\$14,750	\$350	\$14,400	\$2,458	\$4,917	\$2,400	\$4,800
117	7262	EQUALS International (Aust) Pty Ltd	< 5	n.p.	\$13,300	\$0	\$13,300	n.p.	n.p.	n.p.	n.p.
118	7661	Kiama Community College Incorporated	9	4.3	\$13,230	\$0	\$13,230	\$1,470	\$3,084	\$1,470	\$3,084
119	7521	Malekhu Investments Pty. Ltd.	< 5	n.p.	\$11,665	\$0	\$11,665	n.p.	n.p.	n.p.	n.p.
120	7479	Queensland Agricultural Training Colleges	< 5	n.p.	\$9,696	\$0	\$9,696	n.p.	n.p.	n.p.	n.p.
121	7007	ParaPharm Pty Ltd	< 5	n.p.	\$12,755	\$0	\$9,374	n.p.	n.p.	n.p.	n.p.
122	7056	The Malka Group Pty. Ltd.	< 5	n.p.	\$8,910	\$0	\$8,910	n.p.	n.p.	n.p.	n.p.
123	7093	Marr Mooditj Training	5	1.7	\$8,804	\$0	\$8,804	\$1,761	\$5,240	\$1,761	\$5,240
124	7819	Atkinson Training and Development Pty Limited	< 5	n.p.	\$8,400	\$0	\$8,400	n.p.	n.p.	n.p.	n.p.
125	7345	Australia Moreton Education Group Pty Ltd	< 5	n.p.	\$9,999	\$0	\$8,333	n.p.	n.p.	n.p.	n.p.
126	7230	Foundation for Education & Training Ltd	5	2.0	\$23,180	\$15,715	\$7,465	\$4,636	\$11,648	\$1,493	\$3,751
127	8060	North Regional TAFE	5	1.9	\$8,923	\$0	\$7,263	\$1,785	\$4,600	\$1,453	\$3,744
128	7461	New England Institute of Technology Pty Ltd	< 5	n.p.	\$6,667	\$0	\$6,667	n.p.	n.p.	n.p.	n.p.
129	7108	Australian Academy of Vocational Education and Trades Pty Ltd	< 5	n.p.	\$6,214	\$0	\$6,214	n.p.	n.p.	n.p.	n.p.
130	7729	Global Training Institute Pty Ltd	< 5	n.p.	\$5,880	\$0	\$5,880	n.p.	n.p.	n.p.	n.p.
131	4397	Sarina Russo Schools Australia Pty Ltd	< 5	n.p.	\$5,000	\$0	\$5,000	n.p.	n.p.	n.p.	n.p.
132	7086	Charlton Brown Pty Ltd	< 5	n.p.	\$4,980	\$0	\$4,980	n.p.	n.p.	n.p.	n.p.

Rank	Provider ID	Provider name	Students	EFTSL	Tuition fees	Paid upfront	Loans paid	Tuition fees per student	Tuition fees per EFTSL	Loans per student	Loans per EFTSL
133	7405	Advanced Education Australia Pty Ltd	< 5	n.p.	\$3,300	\$0	\$3,300	n.p.	n.p.	n.p.	n.p.
134	7370	GP Links Wide Bay Ltd	< 5	n.p.	\$2,200	\$0	\$2,200	n.p.	n.p.	n.p.	n.p.
135	7697	The Lady Gowrie Child Centre Melbourne Inc	< 5	n.p.	\$1,651	\$0	\$1,651	n.p.	n.p.	n.p.	n.p.
136	7080	Pharmaceutical Society of Australia Limited	< 5	n.p.	\$1,500	\$0	\$1,500	n.p.	n.p.	n.p.	n.p.
137	7553	Australian Salesmasters Training Co. Pty Limited	< 5	n.p.	\$1,250	\$0	\$1,250	n.p.	n.p.	n.p.	n.p.
138	7535	Department of Training and Workforce Development	< 5	n.p.	\$1,460	\$449	\$1,011	n.p.	n.p.	n.p.	n.p.
		Total	24,492	11,230.9	\$89,391,898	\$8,009,193	\$78,131,044	\$3,650	\$7,959	\$3,190	\$6,957

Table 4: VSL courses ordered by VSL-assisted enrolments for the period 1 Jan 2017 to 30 Jun 2017

Rank	Course code	Course name	Enrolments	EFTSL	Tuition fees	Paid upfront	Loans paid	Tuition fees per enrolment	Tuition fees per EFTSL	Loans per enrolment	Loans per EFTSL
1	HLT54115	Diploma of Nursing	3,584	1,608.9	\$15,355,372	\$2,080,536	\$13,085,317	\$4,284	\$9,544	\$3,651	\$8,133
2	CHC50113	Diploma of Early Childhood Education and Care	1,647	725.3	\$3,587,008	\$201,947	\$3,307,172	\$2,178	\$4,945	\$2,008	\$4,559
3	CHC52015	Diploma of Community Services	1,560	731.3	\$3,544,028	\$137,548	\$3,319,020	\$2,270	\$4,846	\$2,126	\$4,538
4	CUA51015	Diploma of Screen and Media	1,475	744.9	\$6,924,910	\$536,961	\$6,181,074	\$4,695	\$9,297	\$4,191	\$8,298
5	SHB50115	Diploma of Beauty Therapy	1,299	654.6	\$5,210,510	\$392,847	\$4,699,967	\$4,011	\$7,959	\$3,618	\$7,180
6	BSB50215	Diploma of Business	805	281.5	\$2,194,108	\$162,103	\$1,751,924	\$2,726	\$7,794	\$2,176	\$6,224
7	CHC51015	Diploma of Counselling	743	268.8	\$2,600,849	\$341,267	\$2,237,753	\$3,500	\$9,677	\$3,012	\$8,326
8	HLT52015	Diploma of Remedial Massage	676	373.3	\$2,825,339	\$82,110	\$2,708,725	\$4,180	\$7,569	\$4,007	\$7,257
9	CUA50815	Diploma of Music Industry	662	392.6	\$3,833,032	\$924,083	\$2,442,449	\$5,790	\$9,764	\$3,690	\$6,222
10	CUA51115	Diploma of Visual Arts	498	212.5	\$1,801,016	\$140,858	\$1,644,314	\$3,617	\$8,475	\$3,302	\$7,738
11	FNS50215	Diploma of Accounting	491	163.7	\$981,311	\$68,711	\$885,719	\$1,999	\$5,994	\$1,804	\$5,410
12	SIS50612	Diploma of Sport Development	431	184.6	\$2,288,673	\$53,300	\$2,133,697	\$5,310	\$12,395	\$4,951	\$11,556
13	BSB50415	Diploma of Business Administration	400	128.9	\$1,021,098	\$96,386	\$880,447	\$2,553	\$7,919	\$2,201	\$6,828
14	CPC50210	Diploma of Building and Construction (Building)	390	199.1	\$853,894	\$12,448	\$825,306	\$2,189	\$4,290	\$2,116	\$4,146
15	CUA50715	Diploma of Graphic Design	389	182.2	\$1,383,167	\$138,886	\$1,222,965	\$3,556	\$7,593	\$3,144	\$6,714
16	ICT50415	Diploma of Information Technology Networking	345	184.6	\$1,334,927	\$53,403	\$1,237,970	\$3,869	\$7,230	\$3,588	\$6,705
17	SIT50316	Diploma of Event Management	344	207.0	\$1,048,906	\$195,287	\$678,094	\$3,049	\$5,066	\$1,971	\$3,275
18	22268VIC	Advanced Diploma of Building Design (Architectural)	339	163.7	\$957,190	\$17,895	\$868,667	\$2,824	\$5,847	\$2,562	\$5,306
19	CHC50413	Diploma of Youth Work	333	134.8	\$890,882	\$67,290	\$811,783	\$2,675	\$6,611	\$2,438	\$6,024
20	BSB51915	Diploma of Leadership and Management	306	90.9	\$553,265	\$28,211	\$480,713	\$1,808	\$6,087	\$1,571	\$5,288
21	CPP50911	Diploma of Building Design	295	87.8	\$550,390	\$99,817	\$429,755	\$1,866	\$6,272	\$1,457	\$4,897
22	MSF50213	Diploma of Interior Design and Decoration	265	113.7	\$993,721	\$175,866	\$811,583	\$3,750	\$8,738	\$3,063	\$7,137
23	CUA60615	Advanced Diploma of Screen and Media	263	152.7	\$1,139,614	\$94,786	\$992,688	\$4,333	\$7,463	\$3,774	\$6,501
24	ICT50115	Diploma of Information Technology	241	121.6	\$692,702	\$1,227	\$691,475	\$2,874	\$5,698	\$2,869	\$5,688
25	AVI50215	Diploma of Aviation (Commercial Pilot Licence - Aeroplane)	240	92.5	\$5,367,837	\$10,839	\$4,773,482	\$22,366	\$58,056	\$19,890	\$51,628
26	BSB52215	Diploma of Legal Services	230	92.3	\$762,190	\$3,464	\$745,542	\$3,314	\$8,253	\$3,241	\$8,073
27	MSL50116	Diploma of Laboratory Technology	226	120.4	\$551,831	\$40,600	\$489,207	\$2,442	\$4,585	\$2,165	\$4,065
28	BSB52115	Diploma of Library and Information Services	224	70.9	\$486,193	\$23,636	\$455,450	\$2,171	\$6,857	\$2,033	\$6,424
29	BSB50615	Diploma of Human Resources Management	223	57.5	\$360,061	\$5,641	\$337,909	\$1,615	\$6,264	\$1,515	\$5,879
30	ICT50215	Diploma of Digital and Interactive Games	217	99.3	\$931,868	\$74,582	\$832,943	\$4,294	\$9,386	\$3,838	\$8,390
31	CUA50915	Diploma of Photography and Photo Imaging	196	82.5	\$797,283	\$114,904	\$643,771	\$4,068	\$9,664	\$3,285	\$7,803
32	CHC53315	Diploma of Mental Health	187	58.2	\$285,941	\$1,506	\$283,625	\$1,529	\$4,916	\$1,517	\$4,877
33	MST50116	Diploma of Applied Fashion Design and Merchandising	181	82.5	\$788,184	\$34,788	\$742,647	\$4,355	\$9,549	\$4,103	\$8,997
34	MEM60112	Advanced Diploma of Engineering	172	90.7	\$378,847	\$5,180	\$365,626	\$2,203	\$4,176	\$2,126	\$4,031
35	CHC50313	Diploma of Child, Youth and Family Intervention	165	55.0	\$366,294	\$50,949	\$315,131	\$2,220	\$6,665	\$1,910	\$5,734
36	CUA60515	Advanced Diploma of Music Industry	162	112.0	\$633,273	\$806	\$625,267	\$3,909	\$5,657	\$3,860	\$5,585
37	22228VIC	Advanced Diploma of Engineering Technology	161	76.6	\$380,300	\$7,867	\$364,540	\$2,362	\$4,963	\$2,264	\$4,757
38	CUA60715	Advanced Diploma of Visual Arts	159	73.3	\$543,013	\$45,891	\$497,123	\$3,415	\$7,413	\$3,127	\$6,787
39	BSB51415	Diploma of Project Management	158	49.9	\$324,559	\$19,515	\$297,544	\$2,054	\$6,503	\$1,883	\$5,962
40	ICT50715	Diploma of Software Development	157	85.4	\$772,794	\$166,486	\$544,626	\$4,922	\$9,047	\$3,469	\$6,376
41	SIT50116	Diploma of Travel and Tourism Management	154	76.6	\$376,171	\$37,269	\$318,313	\$2,443	\$4,911	\$2,067	\$4,156
42	HLT51015	Diploma of Paramedical Science	149	115.9	\$736,780	\$9,633	\$727,148	\$4,945	\$6,359	\$4,880	\$6,276
43	AHCS1116	Diploma of Conservation and Land Management	136	68.3	\$337,118	\$6,894	\$327,589	\$2,479	\$4,934	\$2,409	\$4,795

Rank	Course code	Course name	Enrolments	EFTSL	Tuition fees	Paid upfront	Loans paid	Tuition fees per enrolment	Tuition fees per EFTSL	Loans per enrolment	Loans per EFTSL
44	CPP50116	Diploma of Surveying	135	66.4	\$382,316	\$6,229	\$376,087	\$2,832	\$5,760	\$2,786	\$5,666
45	CUA50415	Diploma of Live Production and Technical Services	124	70.9	\$477,668	\$2,552	\$463,360	\$3,852	\$6,733	\$3,737	\$6,532
46	CUA60315	Advanced Diploma of Graphic Design	109	45.2	\$307,441	\$4,123	\$303,318	\$2,821	\$6,799	\$2,783	\$6,708
47	10343NAT	Advanced Diploma of Professional Game Development	103	45.4	\$927,022	\$659,426	\$267,596	\$9,000	\$20,419	\$2,598	\$5,894
48	FNS60215	Advanced Diploma of Accounting	102	32.0	\$192,171	\$12,680	\$171,979	\$1,884	\$6,007	\$1,686	\$5,376
49	CPC60115	Advanced Diploma of Building Surveying	94	58.6	\$333,017	\$18,079	\$305,607	\$3,543	\$5,683	\$3,251	\$5,215
50	SIT50416	Diploma of Hospitality Management	91	43.4	\$205,397	\$36,967	\$146,649	\$2,257	\$4,737	\$1,612	\$3,382
51	CHC53215	Diploma of Alcohol and Other Drugs	80	21.2	\$105,175	\$38	\$105,137	\$1,315	\$4,968	\$1,314	\$4,966
52	PSP50916	Diploma of Interpreting (LOTE-English)	80	17.4	\$100,594	\$4	\$100,590	\$1,257	\$5,791	\$1,257	\$5,791
53	FNS50615	Diploma of Financial Planning	79	38.5	\$152,142	\$853	\$151,290	\$1,926	\$3,957	\$1,915	\$3,935
54	ICT50615	Diploma of Website Development	78	31.6	\$234,359	\$46,136	\$188,223	\$3,005	\$7,414	\$2,413	\$5,955
55	MST60116	Advanced Diploma of Applied Fashion Design and Merchandising	75	43.4	\$270,131	\$14,674	\$254,938	\$3,602	\$6,226	\$3,399	\$5,875
56	TLI50415	Diploma of Logistics	75	29.4	\$168,807	\$3,535	\$164,958	\$2,251	\$5,748	\$2,199	\$5,617
57	AHC50416	Diploma of Horticulture	73	35.8	\$177,755	\$1,948	\$168,212	\$2,435	\$4,964	\$2,304	\$4,697
58	BSB61315	Advanced Diploma of Marketing and Communication	70	34.4	\$326,708	\$1,500	\$325,208	\$4,667	\$9,492	\$4,646	\$9,448
59	BSB61015	Advanced Diploma of Leadership and Management	63	24.2	\$164,555	\$6,348	\$155,872	\$2,612	\$6,797	\$2,474	\$6,438
60	UEE62111	Advanced Diploma of Engineering Technology - Electrical	62	29.2	\$154,510	\$3,559	\$150,662	\$2,492	\$5,299	\$2,430	\$5,167
61	UEE60411	Advanced Diploma of Computer Systems Engineering	62	23.1	\$158,756	\$0	\$158,756	\$2,561	\$6,864	\$2,561	\$6,864
62	MEM50212	Diploma of Engineering - Technical	59	18.6	\$108,228	\$3,379	\$100,646	\$1,834	\$5,819	\$1,706	\$5,411
63	SIR50212	Diploma of Visual Merchandising	57	30.4	\$197,708	\$16,088	\$181,620	\$3,469	\$6,510	\$3,186	\$5,980
64	ICT50915	Diploma of Digital Media Technologies	54	27.1	\$160,690	\$7,260	\$152,725	\$2,976	\$5,930	\$2,828	\$5,636
65	HLT55115	Diploma of Dental Technology	53	22.1	\$216,161	\$10,070	\$201,658	\$4,079	\$9,799	\$3,805	\$9,141
66	MSF60113	Advanced Diploma of Interior Design	52	30.0	\$221,933	\$32,702	\$189,231	\$4,268	\$7,410	\$3,639	\$6,318
67	22276VIC	Advanced Diploma of Legal Practice	47	21.9	\$153,068	\$938	\$152,130	\$3,257	\$6,999	\$3,237	\$6,956
68	SIS50115	Diploma of Sport and Recreation Management	47	17.0	\$170,646	\$8,794	\$159,394	\$3,631	\$10,056	\$3,391	\$9,393
69	ACM50110	Diploma of Animal Technology	46	24.0	\$143,463	\$9,129	\$129,281	\$3,119	\$5,980	\$2,810	\$5,389
70	AHC50616	Diploma of Landscape Design	46	20.2	\$120,042	\$3,436	\$112,938	\$2,610	\$5,949	\$2,455	\$5,597
71	BSB50815	Diploma of International Business	45	18.2	\$129,583	\$11	\$129,572	\$2,880	\$7,120	\$2,879	\$7,119
72	BSB52415	Diploma of Marketing and Communication	44	21.0	\$150,386	\$11,939	\$135,064	\$3,418	\$7,165	\$3,070	\$6,435
73	UEE60211	Advanced Diploma of Electronics and Communications Engineering	43	17.8	\$131,232	\$14,034	\$114,181	\$3,052	\$7,389	\$2,655	\$6,429
74	CPP60116	Advanced Diploma of Surveying	42	17.7	\$124,169	\$0	\$124,169	\$2,956	\$6,999	\$2,956	\$6,999
75	CHC53415	Diploma of Leisure and Health	42	7.3	\$100,000	\$0	\$100,000	\$2,381	\$13,755	\$2,381	\$13,755
76	SIS50310	Diploma of Outdoor Recreation	41	24.3	\$141,042	\$19,380	\$121,662	\$3,440	\$5,804	\$2,967	\$5,007
77	AVI50415	Diploma of Aviation (Instrument Rating)	36	24.5	\$814,773	\$23,637	\$755,433	\$22,633	\$33,188	\$20,984	\$30,771
78	CUA60213	Advanced Diploma of Live Production and Management Services	35	24.3	\$182,076	\$1,533	\$180,542	\$5,202	\$7,505	\$5,158	\$7,442
79	RII50515	Diploma of Civil Construction Design	35	21.5	\$70,461	\$2,252	\$60,297	\$2,013	\$3,276	\$1,723	\$2,803
80	ICT60515	Advanced Diploma of Computer Systems Technology	35	17.8	\$116,290	\$817	\$103,445	\$3,323	\$6,540	\$2,956	\$5,818
81	22284VIC	Diploma of Business (Public Relations)	32	17.8	\$146,916	\$2,974	\$143,942	\$4,591	\$8,249	\$4,498	\$8,082
82	ICT60215	Advanced Diploma of Network Security	32	15.6	\$128,044	\$2,847	\$125,197	\$4,001	\$8,218	\$3,912	\$8,036
83	FNS50315	Diploma of Finance and Mortgage Broking Management	32	14.0	\$45,629	\$774	\$44,855	\$1,426	\$3,257	\$1,402	\$3,202
84	10308NAT	Advanced Diploma of Professional Screenwriting	32	11.4	\$62,638	\$0	\$62,638	\$1,957	\$5,504	\$1,957	\$5,504
85	BSB51315	Diploma of Work Health and Safety	31	11.4	\$61,076	\$1,208	\$54,862	\$1,970	\$5,376	\$1,770	\$4,829
86	AHC50116	Diploma of Agriculture	30	10.9	\$51,561	\$0	\$45,745	\$1,719	\$4,739	\$1,525	\$4,205
87	22091VIC	Diploma of Professional Writing and Editing	29	12.0	\$70,148	\$476	\$69,672	\$2,419	\$5,831	\$2,402	\$5,792
88	MEM60211	Advanced Diploma of Jewellery and Object Design	28	14.6	\$106,784	\$0	\$93,141	\$3,814	\$7,294	\$3,326	\$6,362
89	CHC51115	Diploma of Financial Counselling	28	4.5	\$20,021	\$0	\$20,021	\$715	\$4,469	\$715	\$4,469

Rank	Course code	Course name	Enrolments	EFTSL	Tuition fees	Paid upfront	Loans paid	Tuition fees per enrolment	Tuition fees per EFTSL	Loans per enrolment	Loans per EFTSL
90	22229VIC	Diploma of Engineering Technology	27	10.6	\$64,767	\$0	\$55,968	\$2,399	\$6,122	\$2,073	\$5,290
91	HLT57715	Diploma of Practice Management	26	8.1	\$39,798	\$673	\$38,429	\$1,531	\$4,907	\$1,478	\$4,738
92	CHC52115	Diploma of Community Development	26	7.3	\$30,507	\$0	\$30,507	\$1,173	\$4,168	\$1,173	\$4,168
93	SIT60316	Advanced Diploma of Hospitality Management	25	17.3	\$72,139	\$24,816	\$41,899	\$2,886	\$4,165	\$1,676	\$2,419
94	BSB61115	Advanced Diploma of Conveyancing	25	7.4	\$61,559	\$17,249	\$42,547	\$2,462	\$8,274	\$1,702	\$5,719
95	BSB52015	Diploma of Conveyancing	24	14.3	\$49,987	\$2,643	\$47,344	\$2,083	\$3,496	\$1,973	\$3,311
96	PSP60916	Advanced Diploma of Interpreting (LOTE-English)	24	6.1	\$26,774	\$1,025	\$25,749	\$1,116	\$4,368	\$1,073	\$4,201
97	10326NAT	Diploma of Education (Aboriginal and Torres Strait Islander)	23	8.9	\$33,326	\$5,233	\$21,602	\$1,449	\$3,766	\$939	\$2,441
98	BSB60915	Advanced Diploma of Management (Human Resources)	23	6.2	\$28,141	\$1,585	\$26,556	\$1,224	\$4,576	\$1,155	\$4,318
99	UEE50511	Diploma of Electronics and Communications Engineering	23	5.3	\$67,845	\$9,090	\$56,385	\$2,950	\$12,753	\$2,452	\$10,599
100	10527NAT	Advanced Diploma of Rudolf Steiner Education	21	10.3	\$96,350	\$45,934	\$49,166	\$4,588	\$9,400	\$2,341	\$4,797
101	AVI50516	Diploma of Aviation (Flight Instructor)	20	13.0	\$463,739	\$65,075	\$378,412	\$23,187	\$35,755	\$18,921	\$29,176
102	MEM50311	Diploma of Jewellery and Object Design	20	8.9	\$86,759	\$0	\$74,214	\$4,338	\$9,748	\$3,711	\$8,339
103	AHC51416	Diploma of Agribusiness Management	17	8.8	\$101,490	\$8,813	\$91,778	\$5,970	\$11,546	\$5,399	\$10,441
104	CUA51215	Diploma of Ceramics	17	4.7	\$45,860	\$0	\$45,860	\$2,698	\$9,757	\$2,698	\$9,757
105	CPC50308	Diploma of Building and Construction (Management)	17	4.3	\$19,924	\$474	\$18,238	\$1,172	\$4,623	\$1,073	\$4,232
106	FNS50915	Diploma of Banking Services Management	16	7.9	\$49,241	\$126	\$49,115	\$3,078	\$6,209	\$3,070	\$6,194
107	22315VIC	Diploma of Theatre Arts	15	12.3	\$22,334	\$0	\$12,742	\$1,489	\$1,822	\$849	\$1,039
108	ICT60115	Advanced Diploma of Information Technology	15	7.9	\$21,145	\$1,115	\$20,030	\$1,410	\$2,673	\$1,335	\$2,532
109	22283VIC	Advanced Diploma of Business (Public Relations)	15	7.2	\$59,415	\$2,015	\$57,400	\$3,961	\$8,252	\$3,827	\$7,972
110	SIT60216	Advanced Diploma of Event Management	15	5.5	\$47,350	\$5,328	\$12,740	\$3,157	\$8,562	\$849	\$2,304
111	SIT60116	Advanced Diploma of Travel and Tourism Management	14	12.9	\$27,854	\$687	\$27,167	\$1,990	\$2,164	\$1,940	\$2,111
112	52697WA	Diploma of Marine Studies	14	6.2	\$35,241	\$811	\$34,430	\$2,517	\$5,721	\$2,459	\$5,589
113	CHC50513	Diploma of Youth Justice	14	4.1	\$6,155	\$0	\$6,155	\$440	\$1,509	\$440	\$1,509
114	BSB60215	Advanced Diploma of Business	14	3.7	\$17,215	\$0	\$17,215	\$1,230	\$4,603	\$1,230	\$4,603
115	10221NAT	Advanced Diploma of Industrial Design	13	8.5	\$39,463	\$0	\$39,463	\$3,036	\$4,632	\$3,036	\$4,632
116	ICT50315	Diploma of Information Technology Systems Administration	13	5.6	\$41,271	\$3,490	\$35,792	\$3,175	\$7,383	\$2,753	\$6,403
117	52703WA	Advanced Diploma of Games Development	12	5.8	\$30,272	\$0	\$30,272	\$2,523	\$5,192	\$2,523	\$5,192
118	CUA60415	Advanced Diploma of Creative Product Development	12	5.8	\$57,500	\$0	\$57,500	\$4,792	\$10,000	\$4,792	\$10,000
119	10073NAT	Advanced Diploma of Acting	11	4.4	\$32,934	\$0	\$32,934	\$2,994	\$7,485	\$2,994	\$7,485
120	MSS50216	Diploma of Environmental Monitoring and Technology	10	5.8	\$26,443	\$0	\$26,443	\$2,644	\$4,599	\$2,644	\$4,599
121	10220NAT	Diploma of Industrial Design	10	3.8	\$13,432	\$0	\$13,432	\$1,343	\$3,535	\$1,343	\$3,535
122	MEM50105	Diploma of Engineering - Advanced Trade	10	3.6	\$37,325	\$0	\$37,325	\$3,733	\$10,282	\$3,733	\$10,282
123	UEE50111	Diploma of Computer Systems Engineering	10	2.6	\$20,509	\$2,535	\$17,974	\$2,051	\$7,739	\$1,797	\$6,782
124	PSP60816	Advanced Diploma of Translating	9	4.3	\$31,945	\$5,450	\$26,495	\$3,549	\$7,499	\$2,944	\$6,219
125	BSB61215	Advanced Diploma of Program Management	9	4.0	\$37,584	\$0	\$37,584	\$4,176	\$9,396	\$4,176	\$9,396
126	CHC62015	Advanced Diploma of Community Sector Management	9	3.9	\$12,863	\$1,546	\$11,316	\$1,429	\$3,273	\$1,257	\$2,879
127	TAE50216	Diploma of Training Design and Development	9	2.9	\$15,792	\$0	\$15,792	\$1,755	\$5,371	\$1,755	\$5,371
128	52725WA	Diploma of Civil and Structural Engineering	8	3.9	\$18,705	\$654	\$18,051	\$2,338	\$4,772	\$2,256	\$4,605
129	AHC51816	Diploma of Organic Farming	8	3.5	\$18,168	\$0	\$18,168	\$2,271	\$5,161	\$2,271	\$5,161
130	AVI50315	Diploma of Aviation (Commercial Pilot Licence - Helicopter)	8	3.0	\$166,875	\$4,748	\$162,127	\$20,859	\$55,998	\$20,266	\$54,405
131	MST60216	Advanced Diploma of Textile Design and Development	8	2.2	\$12,916	\$0	\$12,916	\$1,615	\$5,741	\$1,615	\$5,741
132	22273VIC	Diploma of Agronomy	7	4.4	\$19,167	\$0	\$19,167	\$2,738	\$4,346	\$2,738	\$4,346
133	AHC51016	Diploma of Sports Turf Management	7	4.3	\$14,210	\$0	\$12,582	\$2,030	\$3,336	\$1,797	\$2,954
134	ICT51015	Diploma of Telecommunications Engineering	7	3.5	\$18,990	\$0	\$18,990	\$2,713	\$5,426	\$2,713	\$5,426
135	HLT51612	Diploma of Nursing (Enrolled-Division 2 nursing)	7	3.0	\$15,687	\$0	\$14,027	\$2,241	\$5,282	\$2,004	\$4,723

Rank	Course code	Course name	Enrolments	EFTSL	Tuition fees	Paid upfront	Loans paid	Tuition fees per enrolment	Tuition fees per EFTSL	Loans per enrolment	Loans per EFTSL
136	ICT60315	Advanced Diploma of Information Technology Business Analysis	7	1.8	\$13,295	\$0	\$13,295	\$1,899	\$7,305	\$1,899	\$7,305
137	BSB51615	Diploma of Quality Auditing	7	1.3	\$7,962	\$0	\$7,962	\$1,137	\$6,125	\$1,137	\$6,125
138	FD50311	Diploma of Food Science and Technology	6	3.2	\$11,909	\$50	\$11,859	\$1,985	\$3,733	\$1,977	\$3,718
139	ICT60415	Advanced Diploma of Information Technology Project Management	6	1.3	\$7,168	\$0	\$7,168	\$1,195	\$5,557	\$1,195	\$5,557
140	HLT65015	Advanced Diploma of Dental Prosthetics	6	1.2	\$25,310	\$4,944	\$20,366	\$4,218	\$20,411	\$3,394	\$16,424
141	52694WA	Diploma of Aviation Management	5	3.3	\$23,196	\$0	\$23,196	\$4,639	\$6,987	\$4,639	\$6,987
142	SFI50111	Diploma of Aquaculture	5	2.6	\$20,351	\$2,256	\$18,095	\$4,070	\$7,919	\$3,619	\$7,041
143	ICT50515	Diploma of Database Design and Development	5	2.6	\$11,104	\$0	\$9,000	\$2,221	\$4,354	\$1,800	\$3,529
144	CUA50113	Diploma of Dance (Elite Performance)	5	2.5	\$23,000	\$0	\$23,000	\$4,600	\$9,200	\$4,600	\$9,200
145	10230NAT	Diploma of Horse Industry Management (Performance Horse)	5	2.0	\$12,922	\$0	\$12,922	\$2,584	\$6,429	\$2,584	\$6,429
146	CPP50307	Diploma of Property Services (Agency Management)	5	0.8	\$6,746	\$1,211	\$5,535	\$1,349	\$8,539	\$1,107	\$7,006
147	10348NAT	Graduate Certificate in Professional Supervision (Clinical) (Pastoral)	< 5	n.p.	\$9,400	\$0	\$9,400	n.p.	n.p.	n.p.	n.p.
148	10060NAT	Advanced Diploma of International Hotel and Resort Management	< 5	n.p.	\$21,162	\$6,000	\$15,162	n.p.	n.p.	n.p.	n.p.
149	22308VIC	Diploma of Horse Breeding (Stud Management)	< 5	n.p.	\$9,379	\$0	\$9,379	n.p.	n.p.	n.p.	n.p.
150	MAR50415	Diploma of Maritime Operations (Master up to 500 GT)	< 5	n.p.	\$20,919	\$3,315	\$17,604	n.p.	n.p.	n.p.	n.p.
151	AHC52116	Diploma of Permaculture	< 5	n.p.	\$11,662	\$0	\$11,662	n.p.	n.p.	n.p.	n.p.
152	HLT50113	Diploma of Aboriginal and/or Torres Strait Islander Primary Health Care	< 5	n.p.	\$14,337	\$0	\$13,323	n.p.	n.p.	n.p.	n.p.
153	UEE62211	Advanced Diploma of Electrical - Engineering	< 5	n.p.	\$6,170	\$0	\$6,170	n.p.	n.p.	n.p.	n.p.
154	TAE80113	Graduate Diploma of Adult Language, Literacy and Numeracy Practice	< 5	n.p.	\$7,669	\$0	\$7,669	n.p.	n.p.	n.p.	n.p.
155	AHC50516	Diploma of Arboriculture	< 5	n.p.	\$4,365	\$0	\$4,365	n.p.	n.p.	n.p.	n.p.
156	52724WA	Advanced Diploma of Civil and Structural Engineering	< 5	n.p.	\$8,446	\$1,320	\$7,126	n.p.	n.p.	n.p.	n.p.
157	CHC50213	Diploma of School Age Education and Care	< 5	n.p.	\$6,484	\$1,498	\$4,917	n.p.	n.p.	n.p.	n.p.
158	HLT57915	Diploma of Anaesthetic Technology	< 5	n.p.	\$20,604	\$5,065	\$8,671	n.p.	n.p.	n.p.	n.p.
159	HLT57415	Diploma of Audiometry	< 5	n.p.	\$4,971	\$0	\$4,971	n.p.	n.p.	n.p.	n.p.
160	10052NAT	Advanced Diploma of Health Science (Soft Tissue Therapy)	< 5	n.p.	\$2,740	\$0	\$2,740	n.p.	n.p.	n.p.	n.p.
161	FNS60415	Advanced Diploma of Financial Planning	< 5	n.p.	\$1,770	\$0	\$1,770	n.p.	n.p.	n.p.	n.p.
162	AHC51516	Diploma of Viticulture	< 5	n.p.	\$9,288	\$4,644	\$4,644	n.p.	n.p.	n.p.	n.p.
163	SHB50216	Diploma of Salon Management	< 5	n.p.	\$2,030	\$0	\$2,030	n.p.	n.p.	n.p.	n.p.
164	UEE51211	Diploma of Air-conditioning and Refrigeration Engineering	< 5	n.p.	\$2,430	\$0	\$2,430	n.p.	n.p.	n.p.	n.p.
165	52759WA	Advanced Diploma of Engineering (Oil and Gas)	< 5	n.p.	\$4,989	\$692	\$4,298	n.p.	n.p.	n.p.	n.p.
166	MSF50313	Diploma of Furniture Design and Technology	< 5	n.p.	\$5,070	\$0	\$5,070	n.p.	n.p.	n.p.	n.p.
167	MAR60315	Advanced Diploma of Maritime Operations (Master Unlimited)	< 5	n.p.	\$6,254	\$0	\$6,254	n.p.	n.p.	n.p.	n.p.
168	MAR60115	Advanced Diploma of Maritime Operations (Marine Engineering Class 2)	< 5	n.p.	\$3,619	\$0	\$3,619	n.p.	n.p.	n.p.	n.p.
169	52760WA	Diploma of Engineering (Oil and Gas)	< 5	n.p.	\$2,824	\$0	\$2,824	n.p.	n.p.	n.p.	n.p.
170	UEE51111	Diploma of Engineering Technology - Refrigeration and Air-conditioning	< 5	n.p.	\$1,626	\$0	\$1,626	n.p.	n.p.	n.p.	n.p.
171	AHC60316	Advanced Diploma of Agribusiness Management	< 5	n.p.	\$3,375	\$0	\$2,250	n.p.	n.p.	n.p.	n.p.
172	SFI50411	Diploma of Fisheries Compliance	< 5	n.p.	\$2,242	\$449	\$1,793	n.p.	n.p.	n.p.	n.p.
173	10263NAT	Diploma of Applied Geosciences	< 5	n.p.	\$4,400	\$2,200	\$2,200	n.p.	n.p.	n.p.	n.p.
174	RII50415	Diploma of Civil Construction Management	< 5	n.p.	\$5,880	\$0	\$5,880	n.p.	n.p.	n.p.	n.p.
175	22081VIC	Diploma of Auslan	< 5	n.p.	\$511	\$0	\$511	n.p.	n.p.	n.p.	n.p.
176	RII50915	Diploma of Underground Coal Mining Management	< 5	n.p.	\$2,130	\$0	\$2,130	n.p.	n.p.	n.p.	n.p.

Rank	Course code	Course name	Enrolments	EFTSL	Tuition fees	Paid upfront	Loans paid	Tuition fees per enrolment	Tuition fees per EFTSL	Loans per enrolment	Loans per EFTSL
177	MAR50315	Diploma of Maritime Operations (Watchkeeper Deck)	< 5	n.p.	\$2,734	\$0	\$2,734	n.p.	n.p.	n.p.	n.p.
178	CPP50216	Diploma of Spatial Information Services	< 5	n.p.	\$920	\$0	\$920	n.p.	n.p.	n.p.	n.p.
179	CUA60113	Advanced Diploma of Dance (Elite Performance)	< 5	n.p.	\$8,000	\$4,000	\$4,000	n.p.	n.p.	n.p.	n.p.
180	MAR50613	Diploma of Maritime Operations (Marine Engineering Class 3 Near Coastal)	< 5	n.p.	\$3,102	\$0	\$3,102	n.p.	n.p.	n.p.	n.p.
181	RII60515	Advanced Diploma of Civil Construction Design	< 5	n.p.	\$4,098	\$0	\$4,098	n.p.	n.p.	n.p.	n.p.
182	40633SA	Advanced Diploma of Oral Health (Dental Hygiene)	< 5	n.p.	\$3,882	\$1,935	\$1,947	n.p.	n.p.	n.p.	n.p.
183	PMA50116	Diploma of Process Plant Technology	< 5	n.p.	\$1,873	\$874	\$999	n.p.	n.p.	n.p.	n.p.
184	PUA50513	Diploma of Public Safety (Firefighting Management)	< 5	n.p.	\$2,334	\$0	\$2,334	n.p.	n.p.	n.p.	n.p.
185	FNS51815	Diploma of Financial Services	< 5	n.p.	\$336	\$0	\$336	n.p.	n.p.	n.p.	n.p.
186	MAR50115	Diploma of Maritime Operations (Engineer Watchkeeper)	< 5	n.p.	\$4,066	\$0	\$4,066	n.p.	n.p.	n.p.	n.p.
187	ACM50512	Diploma of Veterinary Nursing (General Practice)	< 5	n.p.	\$1,205	\$0	\$1,205	n.p.	n.p.	n.p.	n.p.
188	SIT50216	Diploma of Holiday Park and Resort Management	< 5	n.p.	\$330	\$0	\$330	n.p.	n.p.	n.p.	n.p.
189	ACM50212	Diploma of Veterinary Nursing (Surgical)	< 5	n.p.	\$975	\$0	\$975	n.p.	n.p.	n.p.	n.p.
190	CPC50612	Diploma of Hydraulic Services Design	< 5	n.p.	\$1,634	\$1,076	\$558	n.p.	n.p.	n.p.	n.p.
	Total		24,812	11,230.9	\$89,391,898	\$8,009,193	\$78,131,044	\$3,647	\$7,959	\$3,188	\$6,957

Table 5: VSL courses ordered by VSL loans paid for the period 1 Jan 2017 to 30 Jun 2017

Rank	Course code	Course name	Enrolments	EFTSL	Tuition fees	Paid upfront	Loans paid	Tuition fees per enrolment	Tuition fees per EFTSL	Loans per enrolment	Loans per EFTSL
1	HLT54115	Diploma of Nursing	3,584	1,608.9	\$15,355,372	\$2,080,536	\$13,085,317	\$4,284	\$9,544	\$3,651	\$8,133
2	CUA51015	Diploma of Screen and Media	1,475	744.9	\$6,924,910	\$536,961	\$6,181,074	\$4,695	\$9,297	\$4,191	\$8,298
3	AVI50215	Diploma of Aviation (Commercial Pilot Licence - Aeroplane)	240	92.5	\$5,367,837	\$10,839	\$4,773,482	\$22,366	\$58,056	\$19,890	\$51,628
4	SHB50115	Diploma of Beauty Therapy	1,299	654.6	\$5,210,510	\$392,847	\$4,699,967	\$4,011	\$7,959	\$3,618	\$7,180
5	CHC52015	Diploma of Community Services	1,560	731.3	\$3,544,028	\$137,548	\$3,319,020	\$2,270	\$4,846	\$2,126	\$4,538
6	CHC50113	Diploma of Early Childhood Education and Care	1,647	725.3	\$3,587,008	\$201,947	\$3,307,172	\$2,178	\$4,945	\$2,008	\$4,559
7	HLT52015	Diploma of Remedial Massage	676	373.3	\$2,825,339	\$82,110	\$2,708,725	\$4,180	\$7,569	\$4,007	\$7,257
8	CUA50815	Diploma of Music Industry	662	392.6	\$3,833,032	\$924,083	\$2,442,449	\$5,790	\$9,764	\$3,690	\$6,222
9	CHC51015	Diploma of Counselling	743	268.8	\$2,600,849	\$341,267	\$2,237,753	\$3,500	\$9,677	\$3,012	\$8,326
10	SIS50612	Diploma of Sport Development	431	184.6	\$2,288,673	\$53,300	\$2,133,697	\$5,310	\$12,395	\$4,951	\$11,556
11	BSB50215	Diploma of Business	805	281.5	\$2,194,108	\$162,103	\$1,751,924	\$2,726	\$7,794	\$2,176	\$6,224
12	CUA51115	Diploma of Visual Arts	498	212.5	\$1,801,016	\$140,858	\$1,644,314	\$3,617	\$8,475	\$3,302	\$7,738
13	ICT50415	Diploma of Information Technology Networking	345	184.6	\$1,334,927	\$53,403	\$1,237,970	\$3,869	\$7,230	\$3,588	\$6,705
14	CUA50715	Diploma of Graphic Design	389	182.2	\$1,383,167	\$138,886	\$1,222,965	\$3,556	\$7,593	\$3,144	\$6,714
15	CUA60615	Advanced Diploma of Screen and Media	263	152.7	\$1,139,614	\$94,786	\$992,688	\$4,333	\$7,463	\$3,774	\$6,501
16	FNS50215	Diploma of Accounting	491	163.7	\$981,311	\$68,711	\$885,719	\$1,999	\$5,994	\$1,804	\$5,410
17	BSB50415	Diploma of Business Administration	400	128.9	\$1,021,098	\$96,386	\$880,447	\$2,553	\$7,919	\$2,201	\$6,828
18	22268VIC	Advanced Diploma of Building Design (Architectural)	339	163.7	\$957,190	\$17,895	\$868,667	\$2,824	\$5,847	\$2,562	\$5,306
19	ICT50215	Diploma of Digital and Interactive Games	217	99.3	\$931,868	\$74,582	\$832,943	\$4,294	\$9,386	\$3,838	\$8,390
20	CPC50210	Diploma of Building and Construction (Building)	390	199.1	\$853,894	\$12,448	\$825,306	\$2,189	\$4,290	\$2,116	\$4,146
21	CHC50413	Diploma of Youth Work	333	134.8	\$890,882	\$67,290	\$811,783	\$2,675	\$6,611	\$2,438	\$6,024
22	MSF50213	Diploma of Interior Design and Decoration	265	113.7	\$993,721	\$175,866	\$811,583	\$3,750	\$8,738	\$3,063	\$7,137
23	AVI50415	Diploma of Aviation (Instrument Rating)	36	24.5	\$814,773	\$23,637	\$755,433	\$22,633	\$33,188	\$20,984	\$30,771
24	BSB52215	Diploma of Legal Services	230	92.3	\$762,190	\$3,464	\$745,542	\$3,314	\$8,253	\$3,241	\$8,073
25	MST50116	Diploma of Applied Fashion Design and Merchandising	181	82.5	\$788,184	\$34,788	\$742,647	\$4,355	\$9,549	\$4,103	\$8,997
26	HLT51015	Diploma of Paramedical Science	149	115.9	\$736,780	\$9,633	\$727,148	\$4,945	\$6,359	\$4,880	\$6,276
27	ICT50115	Diploma of Information Technology	241	121.6	\$692,702	\$1,227	\$691,475	\$2,874	\$5,698	\$2,869	\$5,688
28	SIT50316	Diploma of Event Management	344	207.0	\$1,048,906	\$195,287	\$678,094	\$3,049	\$5,066	\$1,971	\$3,275
29	CUA50915	Diploma of Photography and Photo Imaging	196	82.5	\$797,283	\$114,904	\$643,771	\$4,068	\$9,664	\$3,285	\$7,803
30	CUA60515	Advanced Diploma of Music Industry	162	112.0	\$633,273	\$806	\$625,267	\$3,909	\$5,657	\$3,860	\$5,585
31	ICT50715	Diploma of Software Development	157	85.4	\$772,794	\$166,486	\$544,626	\$4,922	\$9,047	\$3,469	\$6,376
32	CUA60715	Advanced Diploma of Visual Arts	159	73.3	\$543,013	\$45,891	\$497,123	\$3,415	\$7,413	\$3,127	\$6,787
33	MSL50116	Diploma of Laboratory Technology	226	120.4	\$551,831	\$40,600	\$489,207	\$2,442	\$4,585	\$2,165	\$4,065
34	BSB51915	Diploma of Leadership and Management	306	90.9	\$553,265	\$28,211	\$480,713	\$1,808	\$6,087	\$1,571	\$5,288
35	CUA50415	Diploma of Live Production and Technical Services	124	70.9	\$477,668	\$2,552	\$463,360	\$3,852	\$6,733	\$3,737	\$6,532
36	BSB52115	Diploma of Library and Information Services	224	70.9	\$486,193	\$23,636	\$455,450	\$2,171	\$6,857	\$2,033	\$6,424
37	CPP50911	Diploma of Building Design	295	87.8	\$550,390	\$99,817	\$429,755	\$1,866	\$6,272	\$1,457	\$4,897
38	AVI50516	Diploma of Aviation (Flight Instructor)	20	13.0	\$463,739	\$65,075	\$378,412	\$23,187	\$35,755	\$18,921	\$29,176
39	CPP50116	Diploma of Surveying	135	66.4	\$382,316	\$6,229	\$376,087	\$2,832	\$5,760	\$2,786	\$5,666
40	MEM60112	Advanced Diploma of Engineering	172	90.7	\$378,847	\$5,180	\$365,626	\$2,203	\$4,176	\$2,126	\$4,031
41	22228VIC	Advanced Diploma of Engineering Technology	161	76.6	\$380,300	\$7,867	\$364,540	\$2,362	\$4,963	\$2,264	\$4,757
42	BSB50615	Diploma of Human Resources Management	223	57.5	\$360,061	\$5,641	\$337,909	\$1,615	\$6,264	\$1,515	\$5,879
43	AHCS1116	Diploma of Conservation and Land Management	136	68.3	\$337,118	\$6,894	\$327,589	\$2,479	\$4,934	\$2,409	\$4,795

Rank	Course code	Course name	Enrolments	EFTSL	Tuition fees	Paid upfront	Loans paid	Tuition fees per enrolment	Tuition fees per EFTSL	Loans per enrolment	Loans per EFTSL
44	BSB61315	Advanced Diploma of Marketing and Communication	70	34.4	\$326,708	\$1,500	\$325,208	\$4,667	\$9,492	\$4,646	\$9,448
45	SIT50116	Diploma of Travel and Tourism Management	154	76.6	\$376,171	\$37,269	\$318,313	\$2,443	\$4,911	\$2,067	\$4,156
46	CHC50313	Diploma of Child, Youth and Family Intervention	165	55.0	\$366,294	\$50,949	\$315,131	\$2,220	\$6,665	\$1,910	\$5,734
47	CPC60115	Advanced Diploma of Building Surveying	94	58.6	\$333,017	\$18,079	\$305,607	\$3,543	\$5,683	\$3,251	\$5,215
48	CUA60315	Advanced Diploma of Graphic Design	109	45.2	\$307,441	\$4,123	\$303,318	\$2,821	\$6,799	\$2,783	\$6,708
49	BSB51415	Diploma of Project Management	158	49.9	\$324,559	\$19,515	\$297,544	\$2,054	\$6,503	\$1,883	\$5,962
50	CHC53315	Diploma of Mental Health	187	58.2	\$285,941	\$1,506	\$283,625	\$1,529	\$4,916	\$1,517	\$4,877
51	10343NAT	Advanced Diploma of Professional Game Development	103	45.4	\$927,022	\$659,426	\$267,596	\$9,000	\$20,419	\$2,598	\$5,894
52	MST60116	Advanced Diploma of Applied Fashion Design and Merchandising	75	43.4	\$270,131	\$14,674	\$254,938	\$3,602	\$6,226	\$3,399	\$5,875
53	HLT55115	Diploma of Dental Technology	53	22.1	\$216,161	\$10,070	\$201,658	\$4,079	\$9,799	\$3,805	\$9,141
54	MSF60113	Advanced Diploma of Interior Design	52	30.0	\$221,933	\$32,702	\$189,231	\$4,268	\$7,410	\$3,639	\$6,318
55	ICT50615	Diploma of Website Development	78	31.6	\$234,359	\$46,136	\$188,223	\$3,005	\$7,414	\$2,413	\$5,955
56	SIR50212	Diploma of Visual Merchandising	57	30.4	\$197,708	\$16,088	\$181,620	\$3,469	\$6,510	\$3,186	\$5,980
57	CUA60213	Advanced Diploma of Live Production and Management Services	35	24.3	\$182,076	\$1,533	\$180,542	\$5,202	\$7,505	\$5,158	\$7,442
58	FNS60215	Advanced Diploma of Accounting	102	32.0	\$192,171	\$12,680	\$171,979	\$1,884	\$6,007	\$1,686	\$5,376
59	AHC50416	Diploma of Horticulture	73	35.8	\$177,755	\$1,948	\$168,212	\$2,435	\$4,964	\$2,304	\$4,697
60	TLI50415	Diploma of Logistics	75	29.4	\$168,807	\$3,535	\$164,958	\$2,251	\$5,748	\$2,199	\$5,617
61	AVI50315	Diploma of Aviation (Commercial Pilot Licence - Helicopter)	8	3.0	\$166,875	\$4,748	\$162,127	\$20,859	\$55,998	\$20,266	\$54,405
62	SIS50115	Diploma of Sport and Recreation Management	47	17.0	\$170,646	\$8,794	\$159,394	\$3,631	\$10,056	\$3,391	\$9,393
63	UEE60411	Advanced Diploma of Computer Systems Engineering	62	23.1	\$158,756	\$0	\$158,756	\$2,561	\$6,864	\$2,561	\$6,864
64	BSB61015	Advanced Diploma of Leadership and Management	63	24.2	\$164,555	\$6,348	\$155,872	\$2,612	\$6,797	\$2,474	\$6,438
65	ICT50915	Diploma of Digital Media Technologies	54	27.1	\$160,690	\$7,260	\$152,725	\$2,976	\$5,930	\$2,828	\$5,636
66	22276VIC	Advanced Diploma of Legal Practice	47	21.9	\$153,068	\$938	\$152,130	\$3,257	\$6,999	\$3,237	\$6,956
67	FNS50615	Diploma of Financial Planning	79	38.5	\$152,142	\$853	\$151,290	\$1,926	\$3,957	\$1,915	\$3,935
68	UEE62111	Advanced Diploma of Engineering Technology - Electrical	62	29.2	\$154,510	\$3,559	\$150,662	\$2,492	\$5,299	\$2,430	\$5,167
69	SIT50416	Diploma of Hospitality Management	91	43.4	\$205,397	\$36,967	\$146,649	\$2,257	\$4,737	\$1,612	\$3,382
70	22284VIC	Diploma of Business (Public Relations)	32	17.8	\$146,916	\$2,974	\$143,942	\$4,591	\$8,249	\$4,498	\$8,082
71	BSB52415	Diploma of Marketing and Communication	44	21.0	\$150,386	\$11,939	\$135,064	\$3,418	\$7,165	\$3,070	\$6,435
72	BSB50815	Diploma of International Business	45	18.2	\$129,583	\$11	\$129,572	\$2,880	\$7,120	\$2,879	\$7,119
73	ACM50110	Diploma of Animal Technology	46	24.0	\$143,463	\$9,129	\$129,281	\$3,119	\$5,980	\$2,810	\$5,389
74	ICT60215	Advanced Diploma of Network Security	32	15.6	\$128,044	\$2,847	\$125,197	\$4,001	\$8,218	\$3,912	\$8,036
75	CPP60116	Advanced Diploma of Surveying	42	17.7	\$124,169	\$0	\$124,169	\$2,956	\$6,999	\$2,956	\$6,999
76	SIS50310	Diploma of Outdoor Recreation	41	24.3	\$141,042	\$19,380	\$121,662	\$3,440	\$5,804	\$2,967	\$5,007
77	UEE60211	Advanced Diploma of Electronics and Communications Engineering	43	17.8	\$131,232	\$14,034	\$114,181	\$3,052	\$7,389	\$2,655	\$6,429
78	AHC50616	Diploma of Landscape Design	46	20.2	\$120,042	\$3,436	\$112,938	\$2,610	\$5,949	\$2,455	\$5,597
79	CHC53215	Diploma of Alcohol and Other Drugs	80	21.2	\$105,175	\$38	\$105,137	\$1,315	\$4,968	\$1,314	\$4,966
80	ICT60515	Advanced Diploma of Computer Systems Technology	35	17.8	\$116,290	\$817	\$103,445	\$3,323	\$6,540	\$2,956	\$5,818
81	MEM50212	Diploma of Engineering - Technical	59	18.6	\$108,228	\$3,379	\$100,646	\$1,834	\$5,819	\$1,706	\$5,411
82	PSP50916	Diploma of Interpreting (LOTE-English)	80	17.4	\$100,594	\$4	\$100,590	\$1,257	\$5,791	\$1,257	\$5,791
83	CHC53415	Diploma of Leisure and Health	42	7.3	\$100,000	\$0	\$100,000	\$2,381	\$13,755	\$2,381	\$13,755
84	MEM60211	Advanced Diploma of Jewellery and Object Design	28	14.6	\$106,784	\$0	\$93,141	\$3,814	\$7,294	\$3,326	\$6,362
85	AHC51416	Diploma of Agribusiness Management	17	8.8	\$101,490	\$8,813	\$91,778	\$5,970	\$11,546	\$5,399	\$10,441
86	MEM50311	Diploma of Jewellery and Object Design	20	8.9	\$86,759	\$0	\$74,214	\$4,338	\$9,748	\$3,711	\$8,339
87	22091VIC	Diploma of Professional Writing and Editing	29	12.0	\$70,148	\$476	\$69,672	\$2,419	\$5,831	\$2,402	\$5,792
88	10308NAT	Advanced Diploma of Professional Screenwriting	32	11.4	\$62,638	\$0	\$62,638	\$1,957	\$5,504	\$1,957	\$5,504
89	RII50515	Diploma of Civil Construction Design	35	21.5	\$70,461	\$2,252	\$60,297	\$2,013	\$3,276	\$1,723	\$2,803

Rank	Course code	Course name	Enrolments	EFTSL	Tuition fees	Paid upfront	Loans paid	Tuition fees per enrolment	Tuition fees per EFTSL	Loans per enrolment	Loans per EFTSL
90	CUA60415	Advanced Diploma of Creative Product Development	12	5.8	\$57,500	\$0	\$57,500	\$4,792	\$10,000	\$4,792	\$10,000
91	22283VIC	Advanced Diploma of Business (Public Relations)	15	7.2	\$59,415	\$2,015	\$57,400	\$3,961	\$8,252	\$3,827	\$7,972
92	UEE50511	Diploma of Electronics and Communications Engineering	23	5.3	\$67,845	\$9,090	\$56,385	\$2,950	\$12,753	\$2,452	\$10,599
93	22229VIC	Diploma of Engineering Technology	27	10.6	\$64,767	\$0	\$55,968	\$2,399	\$6,122	\$2,073	\$5,290
94	BSB51315	Diploma of Work Health and Safety	31	11.4	\$61,076	\$1,208	\$54,862	\$1,970	\$5,376	\$1,770	\$4,829
95	10527NAT	Advanced Diploma of Rudolf Steiner Education	21	10.3	\$96,350	\$45,934	\$49,166	\$4,588	\$9,400	\$2,341	\$4,797
96	FNS50915	Diploma of Banking Services Management	16	7.9	\$49,241	\$126	\$49,115	\$3,078	\$6,209	\$3,070	\$6,194
97	BSB52015	Diploma of Conveyancing	24	14.3	\$49,987	\$2,643	\$47,344	\$2,083	\$3,496	\$1,973	\$3,311
98	CUA51215	Diploma of Ceramics	17	4.7	\$45,860	\$0	\$45,860	\$2,698	\$9,757	\$2,698	\$9,757
99	AHC50116	Diploma of Agriculture	30	10.9	\$51,561	\$0	\$45,745	\$1,719	\$4,739	\$1,525	\$4,205
100	FNS50315	Diploma of Finance and Mortgage Broking Management	32	14.0	\$45,629	\$774	\$44,855	\$1,426	\$3,257	\$1,402	\$3,202
101	BSB61115	Advanced Diploma of Conveyancing	25	7.4	\$61,559	\$17,249	\$42,547	\$2,462	\$8,274	\$1,702	\$5,719
102	SIT60316	Advanced Diploma of Hospitality Management	25	17.3	\$72,139	\$24,816	\$41,899	\$2,886	\$4,165	\$1,676	\$2,419
103	10221NAT	Advanced Diploma of Industrial Design	13	8.5	\$39,463	\$0	\$39,463	\$3,036	\$4,632	\$3,036	\$4,632
104	HLT57715	Diploma of Practice Management	26	8.1	\$39,798	\$673	\$38,429	\$1,531	\$4,907	\$1,478	\$4,738
105	BSB61215	Advanced Diploma of Program Management	9	4.0	\$37,584	\$0	\$37,584	\$4,176	\$9,396	\$4,176	\$9,396
106	MEM50105	Diploma of Engineering - Advanced Trade	10	3.6	\$37,325	\$0	\$37,325	\$3,733	\$10,282	\$3,733	\$10,282
107	ICT50315	Diploma of Information Technology Systems Administration	13	5.6	\$41,271	\$3,490	\$35,792	\$3,175	\$7,383	\$2,753	\$6,403
108	52697WA	Diploma of Marine Studies	14	6.2	\$35,241	\$811	\$34,430	\$2,517	\$5,721	\$2,459	\$5,589
109	10073NAT	Advanced Diploma of Acting	11	4.4	\$32,934	\$0	\$32,934	\$2,994	\$7,485	\$2,994	\$7,485
110	CHC52115	Diploma of Community Development	26	7.3	\$30,507	\$0	\$30,507	\$1,173	\$4,168	\$1,173	\$4,168
111	52703WA	Advanced Diploma of Games Development	12	5.8	\$30,272	\$0	\$30,272	\$2,523	\$5,192	\$2,523	\$5,192
112	SIT60116	Advanced Diploma of Travel and Tourism Management	14	12.9	\$27,854	\$687	\$27,167	\$1,990	\$2,164	\$1,940	\$2,111
113	BSB60915	Advanced Diploma of Management (Human Resources)	23	6.2	\$28,141	\$1,585	\$26,556	\$1,224	\$4,576	\$1,155	\$4,318
114	PSP60816	Advanced Diploma of Translating	9	4.3	\$31,945	\$5,450	\$26,495	\$3,549	\$7,499	\$2,944	\$6,219
115	MSS50216	Diploma of Environmental Monitoring and Technology	10	5.8	\$26,443	\$0	\$26,443	\$2,644	\$4,599	\$2,644	\$4,599
116	PSP60916	Advanced Diploma of Interpreting (LOTE-English)	24	6.1	\$26,774	\$1,025	\$25,749	\$1,116	\$4,368	\$1,073	\$4,201
117	52694WA	Diploma of Aviation Management	5	3.3	\$23,196	\$0	\$23,196	\$4,639	\$6,987	\$4,639	\$6,987
118	CUA50113	Diploma of Dance (Elite Performance)	5	2.5	\$23,000	\$0	\$23,000	\$4,600	\$9,200	\$4,600	\$9,200
119	10326NAT	Diploma of Education (Aboriginal and Torres Strait Islander)	23	8.9	\$33,326	\$5,233	\$21,602	\$1,449	\$3,766	\$939	\$2,441
120	HLT65015	Advanced Diploma of Dental Prosthetics	6	1.2	\$25,310	\$4,944	\$20,366	\$4,218	\$20,411	\$3,394	\$16,424
121	ICT60115	Advanced Diploma of Information Technology	15	7.9	\$21,145	\$1,115	\$20,030	\$1,410	\$2,673	\$1,335	\$2,532
122	CHC51115	Diploma of Financial Counselling	28	4.5	\$20,021	\$0	\$20,021	\$715	\$4,469	\$715	\$4,469
123	22273VIC	Diploma of Agronomy	7	4.4	\$19,167	\$0	\$19,167	\$2,738	\$4,346	\$2,738	\$4,346
124	ICT51015	Diploma of Telecommunications Engineering	7	3.5	\$18,990	\$0	\$18,990	\$2,713	\$5,426	\$2,713	\$5,426
125	CPC50308	Diploma of Building and Construction (Management)	17	4.3	\$19,924	\$474	\$18,238	\$1,172	\$4,623	\$1,073	\$4,232
126	AHC51816	Diploma of Organic Farming	8	3.5	\$18,168	\$0	\$18,168	\$2,271	\$5,161	\$2,271	\$5,161
127	SFI50111	Diploma of Aquaculture	5	2.6	\$20,351	\$2,256	\$18,095	\$4,070	\$7,919	\$3,619	\$7,041
128	52725WA	Diploma of Civil and Structural Engineering	8	3.9	\$18,705	\$654	\$18,051	\$2,338	\$4,772	\$2,256	\$4,605
129	UEE50111	Diploma of Computer Systems Engineering	10	2.6	\$20,509	\$2,535	\$17,974	\$2,051	\$7,739	\$1,797	\$6,782
130	MAR50415	Diploma of Maritime Operations (Master up to 500 GT)	< 5	n.p.	\$20,919	\$3,315	\$17,604	n.p.	n.p.	n.p.	n.p.
131	BSB60215	Advanced Diploma of Business	14	3.7	\$17,215	\$0	\$17,215	\$1,230	\$4,603	\$1,230	\$4,603
132	TAE50216	Diploma of Training Design and Development	9	2.9	\$15,792	\$0	\$15,792	\$1,755	\$5,371	\$1,755	\$5,371
133	10060NAT	Advanced Diploma of International Hotel and Resort Management	< 5	n.p.	\$21,162	\$6,000	\$15,162	n.p.	n.p.	n.p.	n.p.
134	HLT51612	Diploma of Nursing (Enrolled-Division 2 nursing)	7	3.0	\$15,687	\$0	\$14,027	\$2,241	\$5,282	\$2,004	\$4,723
135	10220NAT	Diploma of Industrial Design	10	3.8	\$13,432	\$0	\$13,432	\$1,343	\$3,535	\$1,343	\$3,535

Rank	Course code	Course name	Enrolments	EFTSL	Tuition fees	Paid upfront	Loans paid	Tuition fees per enrolment	Tuition fees per EFTSL	Loans per enrolment	Loans per EFTSL
136	HLT50113	Diploma of Aboriginal and/or Torres Strait Islander Primary Health Care	< 5	n.p.	\$14,337	\$0	\$13,323	n.p.	n.p.	n.p.	n.p.
137	ICT60315	Advanced Diploma of Information Technology Business Analysis	7	1.8	\$13,295	\$0	\$13,295	\$1,899	\$7,305	\$1,899	\$7,305
138	10230NAT	Diploma of Horse Industry Management (Performance Horse)	5	2.0	\$12,922	\$0	\$12,922	\$2,584	\$6,429	\$2,584	\$6,429
139	MST60216	Advanced Diploma of Textile Design and Development	8	2.2	\$12,916	\$0	\$12,916	\$1,615	\$5,741	\$1,615	\$5,741
140	22315VIC	Diploma of Theatre Arts	15	12.3	\$22,334	\$0	\$12,742	\$1,489	\$1,822	\$849	\$1,039
141	SIT60216	Advanced Diploma of Event Management	15	5.5	\$47,350	\$5,328	\$12,740	\$3,157	\$8,562	\$849	\$2,304
142	AHC51016	Diploma of Sports Turf Management	7	4.3	\$14,210	\$0	\$12,582	\$2,030	\$3,336	\$1,797	\$2,954
143	FD50311	Diploma of Food Science and Technology	6	3.2	\$11,909	\$50	\$11,859	\$1,985	\$3,733	\$1,977	\$3,718
144	AHC52116	Diploma of Permaculture	< 5	n.p.	\$11,662	\$0	\$11,662	n.p.	n.p.	n.p.	n.p.
145	CHC62015	Advanced Diploma of Community Sector Management	9	3.9	\$12,863	\$1,546	\$11,316	\$1,429	\$3,273	\$1,257	\$2,879
146	10348NAT	Graduate Certificate in Professional Supervision (Clinical) (Pastoral)	< 5	n.p.	\$9,400	\$0	\$9,400	n.p.	n.p.	n.p.	n.p.
147	22308VIC	Diploma of Horse Breeding (Stud Management)	< 5	n.p.	\$9,379	\$0	\$9,379	n.p.	n.p.	n.p.	n.p.
148	ICT50515	Diploma of Database Design and Development	5	2.6	\$11,104	\$0	\$9,000	\$2,221	\$4,354	\$1,800	\$3,529
149	HLT57915	Diploma of Anaesthetic Technology	< 5	n.p.	\$20,604	\$5,065	\$8,671	n.p.	n.p.	n.p.	n.p.
150	BSB51615	Diploma of Quality Auditing	7	1.3	\$7,962	\$0	\$7,962	\$1,137	\$6,125	\$1,137	\$6,125
151	TAE80113	Graduate Diploma of Adult Language, Literacy and Numeracy Practice	< 5	n.p.	\$7,669	\$0	\$7,669	n.p.	n.p.	n.p.	n.p.
152	ICT60415	Advanced Diploma of Information Technology Project Management	6	1.3	\$7,168	\$0	\$7,168	\$1,195	\$5,557	\$1,195	\$5,557
153	52724WA	Advanced Diploma of Civil and Structural Engineering	< 5	n.p.	\$8,446	\$1,320	\$7,126	n.p.	n.p.	n.p.	n.p.
154	MAR60315	Advanced Diploma of Maritime Operations (Master Unlimited)	< 5	n.p.	\$6,254	\$0	\$6,254	n.p.	n.p.	n.p.	n.p.
155	UEE62211	Advanced Diploma of Electrical - Engineering	< 5	n.p.	\$6,170	\$0	\$6,170	n.p.	n.p.	n.p.	n.p.
156	CHC50513	Diploma of Youth Justice	14	4.1	\$6,155	\$0	\$6,155	\$440	\$1,509	\$440	\$1,509
157	RII50415	Diploma of Civil Construction Management	< 5	n.p.	\$5,880	\$0	\$5,880	n.p.	n.p.	n.p.	n.p.
158	CPP50307	Diploma of Property Services (Agency Management)	5	0.8	\$6,746	\$1,211	\$5,535	\$1,349	\$8,539	\$1,107	\$7,006
159	MSF50313	Diploma of Furniture Design and Technology	< 5	n.p.	\$5,070	\$0	\$5,070	n.p.	n.p.	n.p.	n.p.
160	HLT57415	Diploma of Audiometry	< 5	n.p.	\$4,971	\$0	\$4,971	n.p.	n.p.	n.p.	n.p.
161	CHC50213	Diploma of School Age Education and Care	< 5	n.p.	\$6,484	\$1,498	\$4,917	n.p.	n.p.	n.p.	n.p.
162	AHC51516	Diploma of Viticulture	< 5	n.p.	\$9,288	\$4,644	\$4,644	n.p.	n.p.	n.p.	n.p.
163	AHC50516	Diploma of Arboriculture	< 5	n.p.	\$4,365	\$0	\$4,365	n.p.	n.p.	n.p.	n.p.
164	52759WA	Advanced Diploma of Engineering (Oil and Gas)	< 5	n.p.	\$4,989	\$692	\$4,298	n.p.	n.p.	n.p.	n.p.
165	RII60515	Advanced Diploma of Civil Construction Design	< 5	n.p.	\$4,098	\$0	\$4,098	n.p.	n.p.	n.p.	n.p.
166	MAR50115	Diploma of Maritime Operations (Engineer Watchkeeper)	< 5	n.p.	\$4,066	\$0	\$4,066	n.p.	n.p.	n.p.	n.p.
167	CUA60113	Advanced Diploma of Dance (Elite Performance)	< 5	n.p.	\$8,000	\$4,000	\$4,000	n.p.	n.p.	n.p.	n.p.
168	MAR60115	Advanced Diploma of Maritime Operations (Marine Engineering Class 2)	< 5	n.p.	\$3,619	\$0	\$3,619	n.p.	n.p.	n.p.	n.p.
169	MAR50613	Diploma of Maritime Operations (Marine Engineering Class 3 Near Coastal)	< 5	n.p.	\$3,102	\$0	\$3,102	n.p.	n.p.	n.p.	n.p.
170	52760WA	Diploma of Engineering (Oil and Gas)	< 5	n.p.	\$2,824	\$0	\$2,824	n.p.	n.p.	n.p.	n.p.
171	10052NAT	Advanced Diploma of Health Science (Soft Tissue Therapy)	< 5	n.p.	\$2,740	\$0	\$2,740	n.p.	n.p.	n.p.	n.p.
172	MAR50315	Diploma of Maritime Operations (Watchkeeper Deck)	< 5	n.p.	\$2,734	\$0	\$2,734	n.p.	n.p.	n.p.	n.p.
173	UEE51211	Diploma of Air-conditioning and Refrigeration Engineering	< 5	n.p.	\$2,430	\$0	\$2,430	n.p.	n.p.	n.p.	n.p.
174	PUA50513	Diploma of Public Safety (Firefighting Management)	< 5	n.p.	\$2,334	\$0	\$2,334	n.p.	n.p.	n.p.	n.p.
175	AHC60316	Advanced Diploma of Agribusiness Management	< 5	n.p.	\$3,375	\$0	\$2,250	n.p.	n.p.	n.p.	n.p.
176	10263NAT	Diploma of Applied Geosciences	< 5	n.p.	\$4,400	\$2,200	\$2,200	n.p.	n.p.	n.p.	n.p.
177	RII50915	Diploma of Underground Coal Mining Management	< 5	n.p.	\$2,130	\$0	\$2,130	n.p.	n.p.	n.p.	n.p.
178	SHB50216	Diploma of Salon Management	< 5	n.p.	\$2,030	\$0	\$2,030	n.p.	n.p.	n.p.	n.p.
179	40633SA	Advanced Diploma of Oral Health (Dental Hygiene)	< 5	n.p.	\$3,882	\$1,935	\$1,947	n.p.	n.p.	n.p.	n.p.
180	SFI50411	Diploma of Fisheries Compliance	< 5	n.p.	\$2,242	\$449	\$1,793	n.p.	n.p.	n.p.	n.p.
181	FNS60415	Advanced Diploma of Financial Planning	< 5	n.p.	\$1,770	\$0	\$1,770	n.p.	n.p.	n.p.	n.p.

Rank	Course code	Course name	Enrolments	EFTSL	Tuition fees	Paid upfront	Loans paid	Tuition fees per enrolment	Tuition fees per EFTSL	Loans per enrolment	Loans per EFTSL
182	UEE51111	Diploma of Engineering Technology - Refrigeration and Air-conditioning	< 5	n.p.	\$1,626	\$0	\$1,626	n.p.	n.p.	n.p.	n.p.
183	ACM50512	Diploma of Veterinary Nursing (General Practice)	< 5	n.p.	\$1,205	\$0	\$1,205	n.p.	n.p.	n.p.	n.p.
184	PMA50116	Diploma of Process Plant Technology	< 5	n.p.	\$1,873	\$874	\$999	n.p.	n.p.	n.p.	n.p.
185	ACM50212	Diploma of Veterinary Nursing (Surgical)	< 5	n.p.	\$975	\$0	\$975	n.p.	n.p.	n.p.	n.p.
186	CPP50216	Diploma of Spatial Information Services	< 5	n.p.	\$920	\$0	\$920	n.p.	n.p.	n.p.	n.p.
187	CPC50612	Diploma of Hydraulic Services Design	< 5	n.p.	\$1,634	\$1,076	\$558	n.p.	n.p.	n.p.	n.p.
188	22081VIC	Diploma of Auslan	< 5	n.p.	\$511	\$0	\$511	n.p.	n.p.	n.p.	n.p.
189	FNS51815	Diploma of Financial Services	< 5	n.p.	\$336	\$0	\$336	n.p.	n.p.	n.p.	n.p.
190	SIT50216	Diploma of Holiday Park and Resort Management	< 5	n.p.	\$330	\$0	\$330	n.p.	n.p.	n.p.	n.p.
		Total	24,812	11,230.9	\$89,391,898	\$8,009,193	\$78,131,044	\$3,647	\$7,959	\$3,188	\$6,957