



Are you looking for a job in Australia?

The Australian Labour Market Update provides information on the Australian labour market on a quarterly basis. It is intended to help people interested in working in Australia on a temporary or permanent basis.

Further information on job prospects, earnings and related information is available at www.joboutlook.gov.au.

Unless otherwise stated, data are from the Australian Bureau of Statistics (ABS) Labour Force Survey, November 2012.

EMPLOYMENT

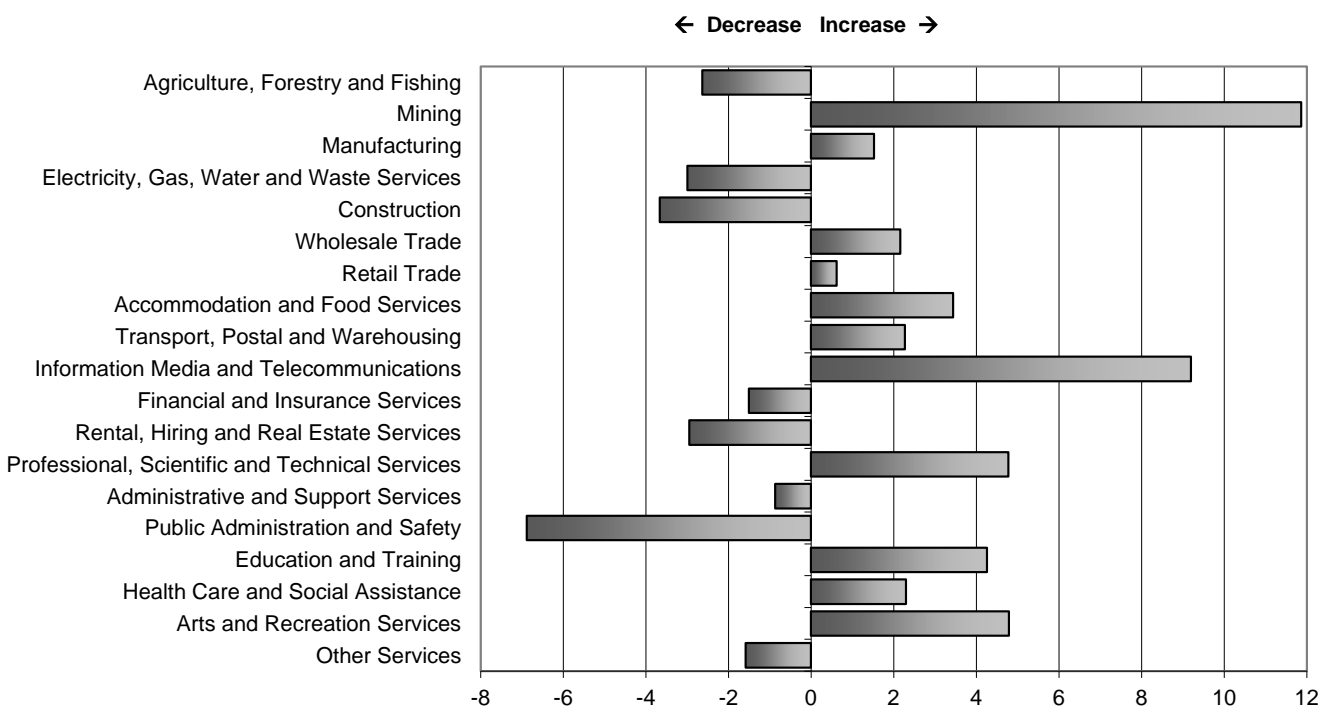
Labour market conditions in Australia improved slightly over the year to November 2012, with trend employment increasing by 119 600 (or 1.0 per cent) compared with an increase of 97 600 (or 0.9 per cent) over the previous year. The pace of trend employment growth has slowed from an average of 19 600 jobs per month in March 2012, to just 5800 jobs per month in November 2012.

In line with a number of leading indicators of labour market activity, the pace of employment growth is likely to remain reasonably modest over the coming months, with the unemployment rate continuing to edge up over the medium term.

Over the 12 months to November 2012, employment (in trend terms) increased in Western Australia (WA, 4.6%), the Northern Territory (NT, 2.4%), the Australian Capital Territory (ACT, 1.9%), New South Wales (NSW, 1.2%) and Victoria (VIC, 0.8%).

Employment opportunities and growth varied across industries. Over the 12 months to November 2012, the largest increases in trend employment occurred in Professional, Scientific and Technical Services (up 41 700), Education and Training (up 36 700), Healthcare and Social Assistance (up 30 900) and Mining (up 28 600). The strongest rates of employment growth were in Mining (11.9%), Information Media and Telecommunications (9.2%), Arts and Recreation Services (4.8%) and Professional, Scientific and Technical Services (4.8%). Employment growth rates by industry are shown in Figure 1.

Figure 1: Percentage change in trend employment by industry – November 2011 to November 2012



Source: ABS, Labour Force, Australia, Detailed, Quarterly, November 2012, ABS Cat. No. 6291.0.55.003.

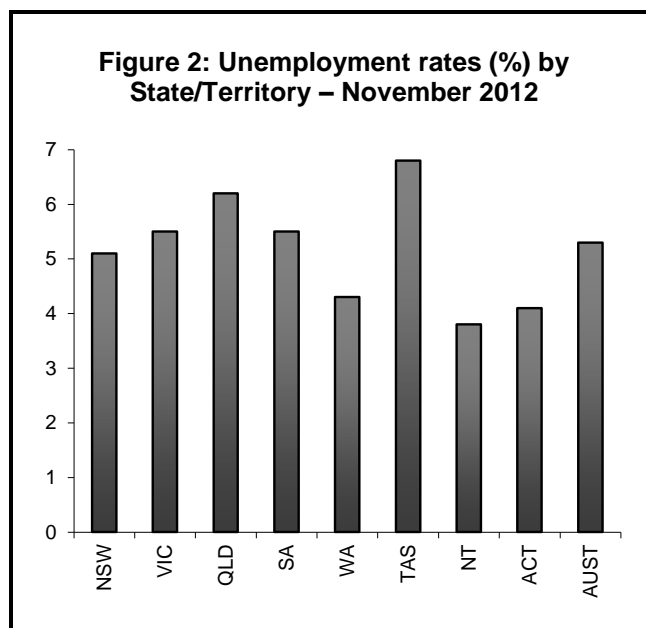
UNEMPLOYMENT

The trend rate of unemployment in November 2012 was 5.3%, an increase of 0.1 percentage points from November 2012.

In the past year, trend unemployment rates decreased in the NT (from 4.3% to 3.8%) and NSW (from 5.3% to 5.1%). Trend unemployment rates rose in Tasmania (from 5.9% to 6.8%), Queensland (from 5.6% to 6.2%), the ACT (from 3.7% to 4.1%), South Australia (SA) (from 5.3% to 5.5%), Victoria (from 5.3% to 5.5%) and WA (from 4.2% to 4.3%).

In November 2012, the trend unemployment rate was highest in Tasmania (6.8%) and lowest in the NT (3.8%).

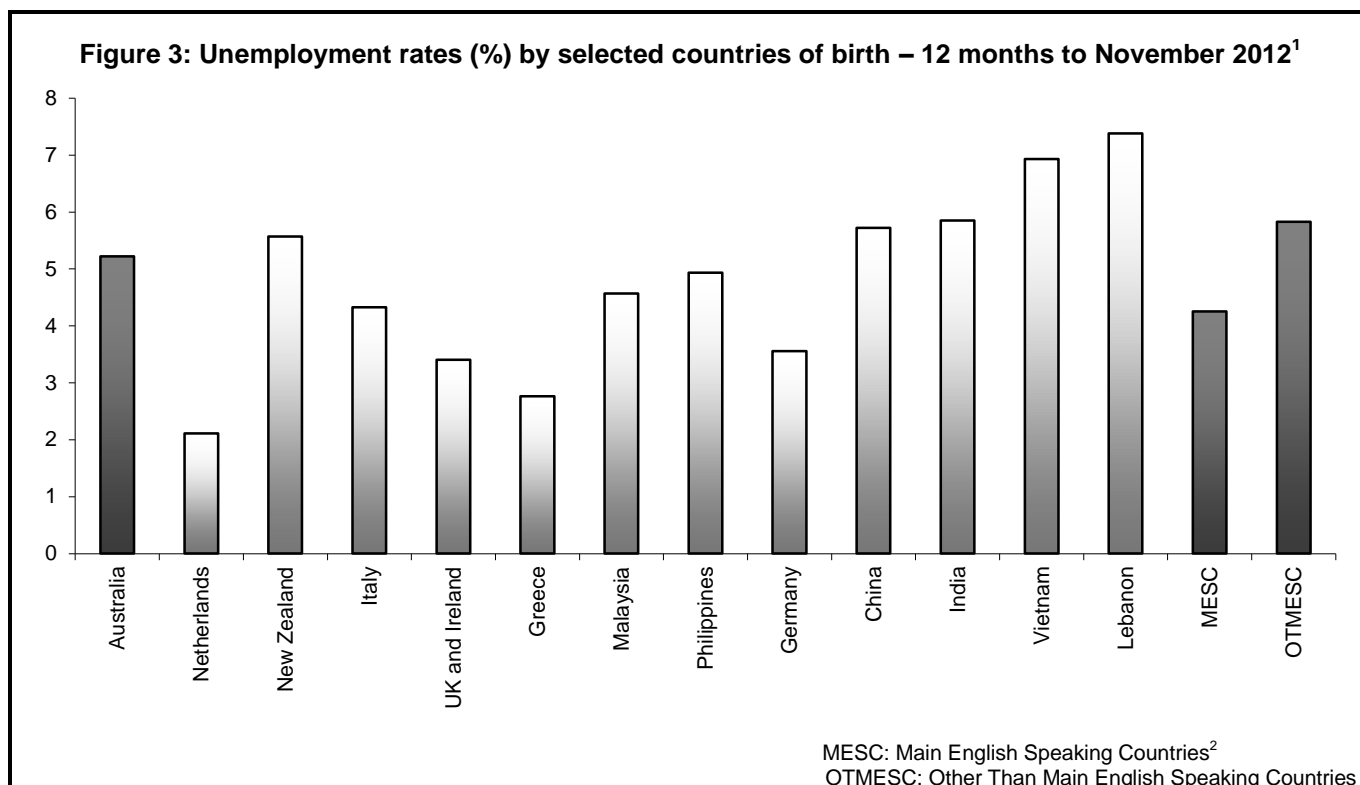
Generally, people in more highly-skilled occupational groups are less likely to experience unemployment. For the four quarters to November 2012, the unemployment rate for those formerly employed as Labourers was almost four times that of former Professionals.



MIGRANT UNEMPLOYMENT

The unemployment rates for people who migrate to Australia vary appreciably. Several factors influence migrant unemployment rates including skill level, age, English proficiency, recent and relevant work experience, and the period since arrival in Australia. Data consistently show recently-arrived migrants have a higher unemployment rate than those who have lived in Australia for some years.

Figure 3 below shows unemployment rates (original data – average of the last 12 months to November 2012) for people resident in Australia who were born in selected overseas countries. In the data below, people born in the Netherlands and Greece have low unemployment rates (2.1% and 2.8% respectively), while unemployment rates for people born in Lebanon and Vietnam are relatively high (7.4% and 6.9% respectively).



¹ The estimates for individual countries in Figure 3 may be subject to high sampling variability.

² MESC are the United Kingdom, Republic of Ireland, South Africa, Canada, the United States of America and New Zealand.



EMPLOYMENT AND UNEMPLOYMENT BY OCCUPATION

While employment growth is not the only factor influencing job prospects, it is often easier to obtain a job in an occupation which is experiencing strong employment growth than one growing only slowly or declining. Over the 12 months to November 2012 (original data – average of the last four quarters), the largest increases in employment occurred for Professionals (up 85 700) and Technicians and Trades Workers (up 20 800). Employment growth rates, in descending skill order, are shown below.

Employment Growth Rates for the 12 months to November 2012		Unemployment Rates for the 12 months to November 2012	
Managers	1.0%	Managers	1.9%
Professionals	3.5%	Professionals	1.7%
Technicians and Trades Workers	1.2%	Technicians and Trades Workers	3.1%
Community and Personal Service Workers	1.8%	Community and Personal Service Workers	3.6%
Clerical and Administrative Workers	-0.3%	Clerical and Administrative Workers	2.8%
Sales Workers	-0.5%	Sales Workers	4.1%
Machinery Operators and Drivers	-0.7%	Machinery Operators and Drivers	4.4%
Labourers	-0.8%	Labourers	6.6%

The unemployment rate for occupational groups generally reflects skill levels. Highly skilled occupational groups experience lower rates of unemployment, while higher unemployment rates are generally associated with less-skilled occupations. The unemployment rates (for those who worked for two weeks or more in the past two years) by occupational group are presented in descending skill order (original data – average of the last four quarters).

Additional information on occupational groups is provided in the following section on internet vacancy trends.

INTERNET VACANCY TRENDS

The Department of Education, Employment and Workplace Relations (DEEWR) produces the monthly Vacancy Report³, containing the Internet Vacancy Index (IVI)⁴ (see Figure 4). Over the year to November 2012, the IVI (trend) decreased by 23.0%, and at November 2012 was at its lowest level since the series began in January 2006.

Over the year to November 2012, the IVI decreased in all states and territories. The smallest decrease was recorded in the NT (down 12.4%), followed by Tasmania (down 14.5%). The largest declines were in Queensland (down 29.3%) and WA (down 26.5%).

Vacancies decreased for all eight occupational groups over the year. The largest decreases were for Technicians and Trades Workers (down 28.4%) and Machinery Operators and Drivers (down 27.8%).

Over the year to November 2012, vacancies decreased in 47 of the 48 occupational clusters, with the largest decreases being for Science Professionals and Veterinarians (down 44.1%), Engineers (down 34.7%), Engineering, ICT and Science Technicians (down 33.3%) and Automotive and Engineering Trades (down 31.2%).

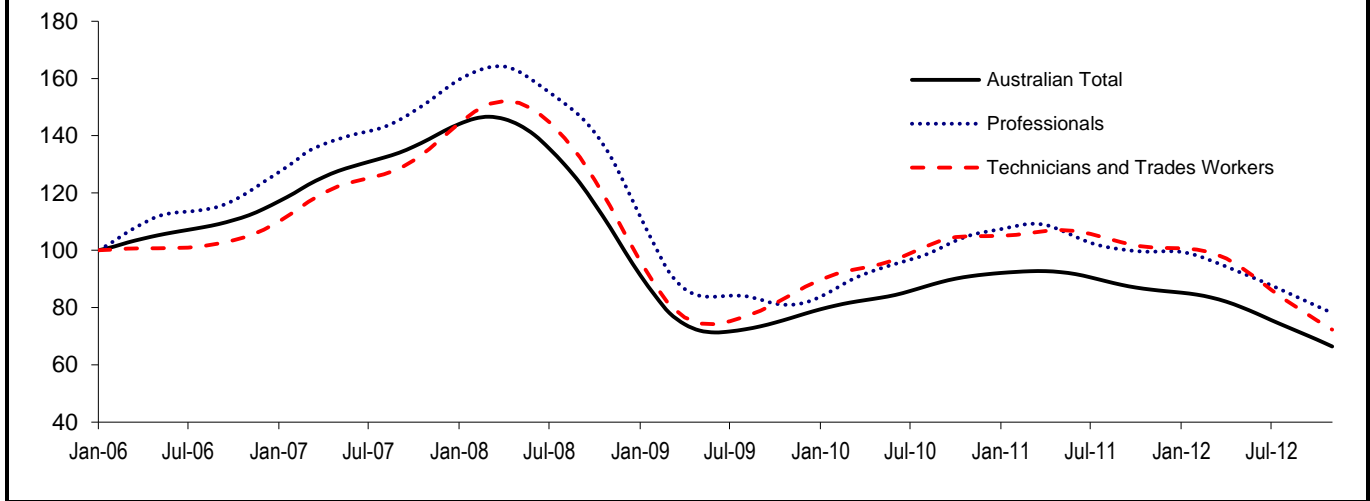
The only increase over the same period was for Education Professionals (up 2.4%).

³ Available from www.deewr.gov.au/lmip/default.aspx?LMIP/VacancyReport.

⁴ The Internet Vacancy Index (IVI) is based on a count of online vacancies newly lodged on SEEK, MyCareer, CareerOne and Australian JobSearch during the month. Duplicate advertisements are removed before the IVI vacancies are coded by DEEWR to occupations based on the Australian and New Zealand Standard Classification of Occupations (ANZSCO) (ABS Cat. No. 1220.0). The data are seasonally adjusted and trended, and then indexed (January 2006 = 100). Minor changes in the series may occur from month to month due to back casting. The series published each month is the most up to date at the time and overwrites previous data.



Figure 4: Internet Vacancy Index, January 2006 to November 2012



Source: Department of Education, Employment and Workplace Relations, Internet Vacancy Index (November 2012), www.deewr.gov.au/lmip/default.aspx?LMIP/VacancyReport.

FUTURE JOB OPENINGS

The Australian Jobs 2012 publication (at www.deewr.gov.au/australianjobs) contains information on future job openings, which reflects the number of new jobs expected to be created over the five years to 2016-17 and the number of openings likely to result due to job turnover. As there may be significant variation between and within States, information on job openings should be used with caution.

Job Openings estimates are indicative only and are intended to provide a guide to opportunities likely to be available over the next five years. It is important to note that these estimates do not provide any guidance about how many people are looking for opportunities in each occupation. The Australian labour market can change quickly so information on the Australian labour market should be re-assessed prior to making a decision to lodge a visa application.

Queries relating to the Australian Labour Market Update publication should be emailed to migration@deewr.gov.au.

Solicitors

In the Australian labour market, solicitors provide legal advice, prepare and draft legal documents, and represent clients on matters associated with the law. The entry requirement for employment in this occupation is the completion of an Australian bachelor degree in a relevant field of study.

LABOUR MARKET PROFILE

Department of Education, Employment and Workplace Relations' employment growth projections indicate the occupation of solicitor will have very strong employment growth to 2016-17. Solicitors are employed across several industries with over three quarters (77.8%) employed in the Professional, Scientific and Technical Services industry and a further 11.0% employed in the Public Administration and Safety industry. **Table A** provides a labour market profile for solicitors. Further information can be found on the *Job Outlook* website (see www.joboutlook.gov.au).

Table A: Solicitors – Key Labour Market Indicators

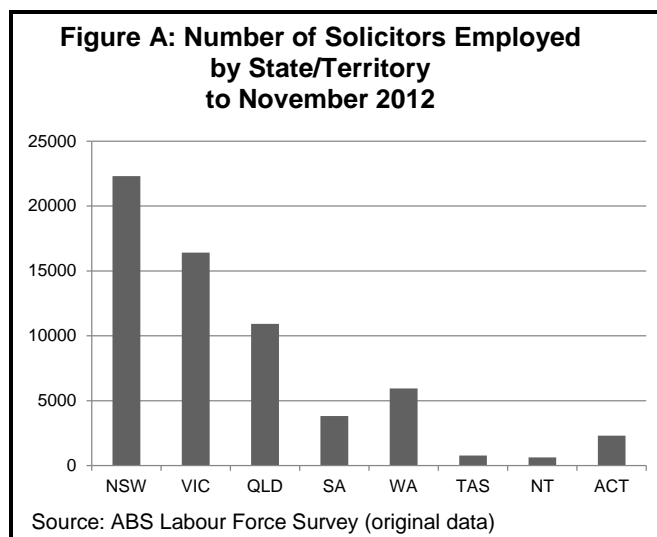
Key Indicator	Solicitors
Occupation size ⁵	69 700
Females	47%
Males	53%
Median age	38 years
Full-time share of employment	84.8%
Average weekly hours (full-time)	43.6
Weekly earnings (full-time and before tax)	\$1 807
Vacancy level (internet)	High
Employment growth over 5 years (to Nov 2011)	16.7%
Future employment growth (to 2016-17)	very strong growth

REGIONAL EMPLOYMENT

Solicitors are employed in all States and Territories.

For the four quarters to November 2012⁶, the average employment of Solicitors was highest in New South Wales (NSW, 22 299), Victoria (VIC, 16 412) and Queensland (QLD, 10 927).

Western Australia (WA), South Australia (SA), the Australian Capital Territory (ACT), Tasmania (TAS) and the Northern Territory (NT) employed the smallest number of Solicitors. See **Figure A** (original data).



⁵ November 2012.

⁶ ABS Labour Force Survey (original data).

SKILLS ASSESSMENT

The Australian assessment authority for solicitors is the Legal Admission Authority in each State or Territory. Individuals applying to migrate to Australia as solicitors must have their skills assessed by the relevant State Legal Admission Authority. More information on the skill assessment process and contact details can be obtained from the Department of Immigration and Citizenship (DIAC) website at www.immi.gov.au/asri/occupations/s/solicitor.htm.

New South Wales

Legal Profession Admission Board
See: www.lpab.lawlink.nsw.gov.au

Victoria

Council of Legal Education and Board of Examiners
See: www.lawadmissions.vic.gov.au

Queensland

Queensland Law Society Incorporated
See: www.qls.com.au/For_the_profession

South Australia

The Law Society of South Australia
See: www.lawsocietyysa.asn.au/other/registry.asp

Western Australia

Legal Practice Board
See: www.lpbwa.org.au

Tasmania

The Law Society of Tasmania
See: www.taslawsociety.asn.au/web/en/lawsociety/about/Board-of-Legal.htm

Northern Territory

Supreme Court of the Northern Territory of Australia
See: www.supremecourt.nt.gov.au/lawyers

Australian Capital Territory

Supreme Court of the Australian Capital Territory
See: www.courts.act.gov.au/supreme/practitioners/admissions

The website of the Law Council of Australia at www.lawcouncil.asn.au/lacc/documents/admission_policies.cfm has information on current admission policies. Membership of a relevant professional association may enhance employment outcomes.

EMPLOYER-SPONSORED MIGRATION

The Australian Government has several employer-sponsored migration programs, including Temporary Business (Long Stay), the Employer Nomination Scheme, the Regional Sponsored Migration Scheme and Labour Agreements. Detailed information on these programs is available on the DIAC website at www.immi.gov.au.

SEEKING EMPLOYMENT IN AUSTRALIA

Overseas-qualified solicitors seeking to work in Australia who are not Australian citizens, Australian permanent residents or New Zealand citizens will need to contact the nearest Australian Embassy, Consulate or High Commission to apply for a visa with a work right. Addresses of all Australian Embassies, High Commissions and Consulates are available from the DIAC website at www.immi.gov.au/contacts.

Overseas-qualified solicitors should note acceptance of overseas qualifications for migration does not guarantee employment in the occupation in Australia. Employment will depend on other factors such as the number of vacancies advertised, skill needs in the Australian labour market, State and Territory licensing requirements and suitability of an applicant for employment in a particular job in Australia.

The Department of Education, Employment and Workplace Relations is not an employment agency and is not able to assist visa applicants or potential migrants to obtain employment in Australia. Australian employers are increasingly using the internet to advertise vacancies and websites of Australian professional bodies (which may recognise membership of affiliated overseas bodies) and industry bodies often include information on vacancies.