



Australian Government



skills for
education and
employment



SEE PROGRAM FOR INDUSTRY ASSOCIATIONS

About the Program

The Skills for Education and Employment (SEE) Program provides access to foundation skills training for all Australians seeking to improve their reading, writing, maths and basic computer skills, enabling them to actively participate in the economy and society.

From 1 July 2024 your organisation can partner with one of our [SEE Providers](#) on behalf of one or more of your members, to design a training project for their employees. These projects can be delivered at a place and time that is convenient to your members.

Who can benefit from the Program?

Your members

Around one in five Australian adults – or about 3 million people – have low literacy and/or numeracy skills.¹ Approximately 60 per cent of these individuals are employed, however, due to their low foundation skills, may struggle to fully participate in the workplace, adjust to workplace changes, or advance their careers.

The SEE Program offers free, customised training to help your member's employees improve their foundation skills, leading to increased confidence and job satisfaction.

Industry Associations

The Australian Industry Group (Ai Group) found 99% of surveyed employers report their businesses as highly affected by low levels of literacy and numeracy in their workforce.²

Your members can benefit from tailored training that improves verbal and written communication skills and enhances numeracy and digital skills. This can lead to increased knowledge and confidence which may lead to reduced staff turnover.

How is a Project delivered?

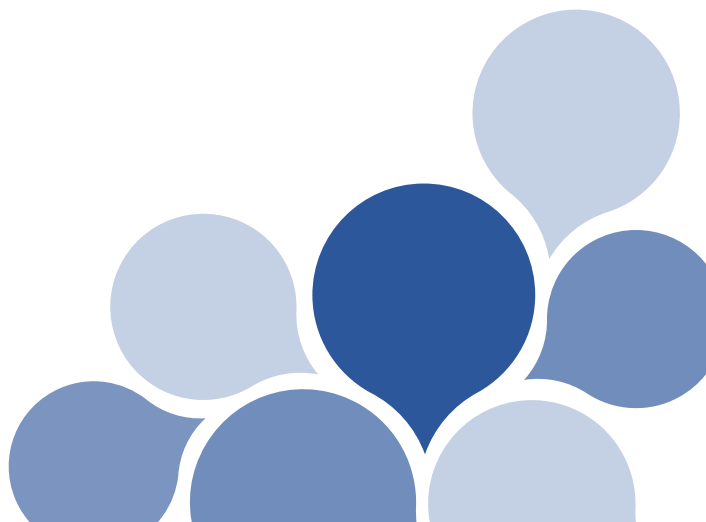
Your [SEE Provider](#) will work with you to identify employee skills needs, typically through one on one skills assessments, and to develop relevant, flexible and tailored training, to address their learning and development needs.

As an Industry Association, you are encouraged to support the delivery of the project. You can do this by organising time for the training to be completed during work hours and by offering an appropriate training space for the training to be delivered.

The length of the training course depends on the identified training needs. Typically, Workplace-Based Training Projects are on average 200 to 250 hours of training and assessment, delivered over 6 to 8 months.

¹ OECD (2017), *Building Skills for All in Australia*

² Ai Group (2018), *Skilling a National Imperative*



How to apply

You can partner with your [local SEE Provider](#) who will design and deliver a training project that suits your members' needs. The SEE Provider is responsible for completing and submitting an online application form, identifying the learning needs of your members' employees, the type of training intended to be delivered and the amount of training and assessment they expect to undertake. The SEE Provider is funded by the Department of Employment and Workplace Relations to deliver the training project.

The department will run up to four project rounds per year. Generally, the application assessment process, from receipt of a project application to notifying the SEE Provider of the outcome, takes around 6 weeks to complete.

Get Started

Get in touch with your [local SEE Provider](#) to get started on the Workplace-Based Training Project, tailored to your members and their learning needs.

How to access the SEE Program

To find out how to access the SEE Program, you can contact your local SEE Provider by visiting dewr.gov.au/SEE

or scan the QR code below.

