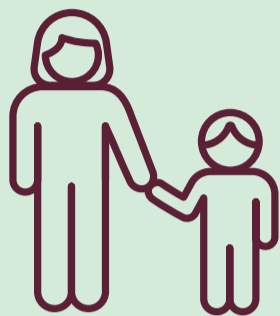




Parent Pathways

You can scan our QR code



Parent Pathways is a support service for parents and carers with children under 6 years old.



Parent Pathways connects parents and carers with someone who can help them meet their goals.

Other ways this service can support parents and carers



Help with child care.



Community support.

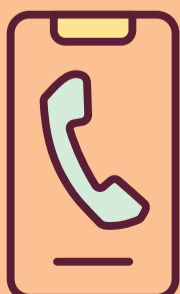


Help with your study or work goals.



Study or training.

How to find more information



You can call us.
1800 805 260



You can visit our website.
www.dewr.gov.au/parentpathways