



Australian Government

**Department of Education, Employment
and Workplace Relations**

Labour Market Assistance Outcomes

March 2011

Contents

Key Results	3
Time Series - Positive & Employment Outcomes	4
Table 1.1 – Labour Market Status	6
Table 1.2 – Employment	7
Table 1.3 – Education.....	8
Job Services Australia	9
Table 2.1– Streams 1 to 4 (Job Services Australia).....	9
Table 2.2– Stream 1 (Job Services Australia)	10
Table 2.3– Stream 2 (Job Services Australia)	11
Table 2.4 - Stream 3 (Job Services Australia)	12
Table 2.5 - Stream 4 (Job Services Australia)	13
Table 2.6 - Job Placements (Job Services Australia).....	14
Table 2.7 - Activities (Job Services Australia)	15
Table 2.8 – Work for the Dole (Job Services Australia)	16
Table 2.9 - Training in Job Search Techniques (Job Services Australia).....	17
Table 2.10 - Employment & Positive Outcomes by Region (Job Services Australia)	18
Disability Employment Services	19
Table 3.1 - Employment Assistance (Disability Employment Services)	19
Table 3.2 - Employment Assistance through Disability Management Service (Disability Employment Services)	20
Table 3.3 - Employment Assistance through Employment Support Service (Disability Employment Services)	21
Table 3.4 - Ongoing Support (Disability Employment Services)	22
Indigenous Employment Program	23
Table 4.1 - Employment related activities (Indigenous Employment Program).....	23
Table 4.2 - Non-employment related activities (Indigenous Employment Program).....	24
Job seekers' satisfaction	25
Table 5.1 Job seekers' satisfaction with assistance.....	25
Further information	26
Outcomes and measures used in this report	26
Other definitions used in this report	27
Reference period	27
Survey & technical information	28
Job Services Australia (JSA)	33
Disability Employment Services (DES).....	34
Reformed Indigenous Employment Program (IEP)	34

For more information on *Labour Market Assistance Outcomes* please email: ppmsurvey@deewr.gov.au

ISBN: 978-0-642-33258-5

Key Results

Three months after becoming in-scope, job seekers are surveyed about their current labour market and education status. This publication showcases the employment and educational outcomes of job seekers in Job Services Australia (JSA,) and Reformed Indigenous Employment Program (IEP) for the year ending March 2011, and for job seekers in Disability Employment Services (DES) for the 10 months ending March 2011.

Positive Outcomes

A **positive outcome** is achieved when, three months after employment assistance, a job seeker is working or studying. Positive outcomes rates for year ending March 2011 are:

60.0% for JSA Streams 1 to 4	32.6% for DES - Employment Assistance
61.0% for JSA Stream 1 (limited)	70.4% for DES - Ongoing Support
68.4% for JSA Stream 1	74.6% for IEP - Employment related activities
65.7% for JSA Stream 2	60.3% for IEP - Non-employment related activities
49.6% for JSA Stream 3	
36.5% for JSA Stream 4	

The states/territories with the highest positive outcome rates for JSA Streams are:

ACT and Victoria

The labour market regions with the highest positive outcome rates for JSA Streams are:

Melbourne, Western Victoria, Adelaide, Brisbane, Northern New South Wales

Employment Outcomes

An **employment outcome** is achieved when, three months after employment assistance, a job seeker indicates they are employed. Employment outcome rates for the year ending March 2011 are:

48.1% for JSA Streams 1 to 4	24.9% for DES - Employment Assistance
46.9% for JSA Stream 1 (limited)	66.8% for DES - Ongoing Support
57.8% for JSA Stream 1	70.2% for IEP - Employment related activities
54.9% for JSA Stream 2	48.2% for IEP - Non-employment related activities
34.0% for JSA Stream 3	
25.2% for JSA Stream 4	

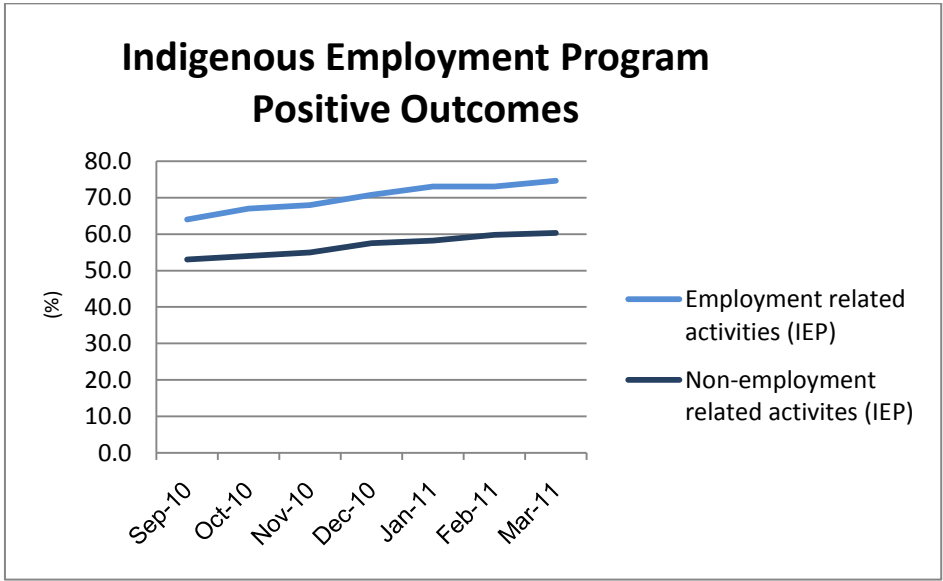
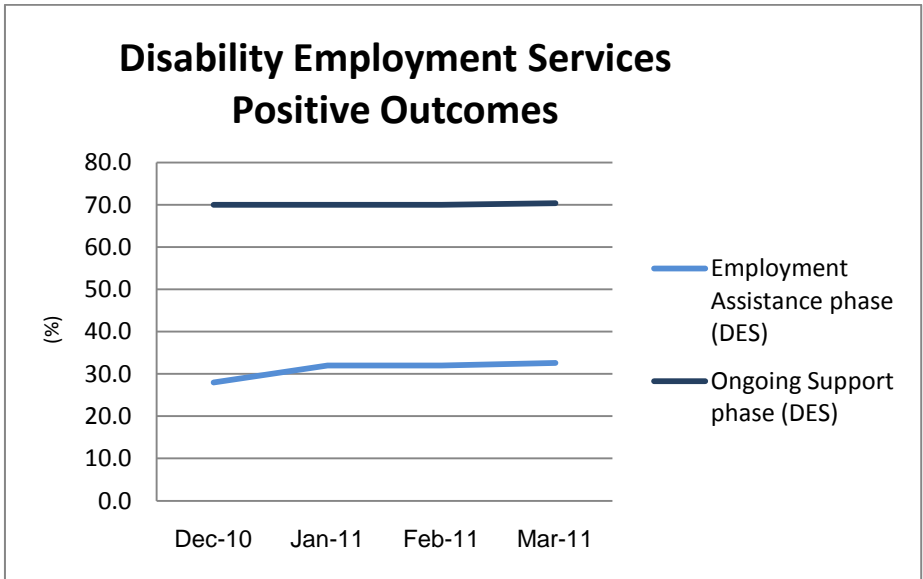
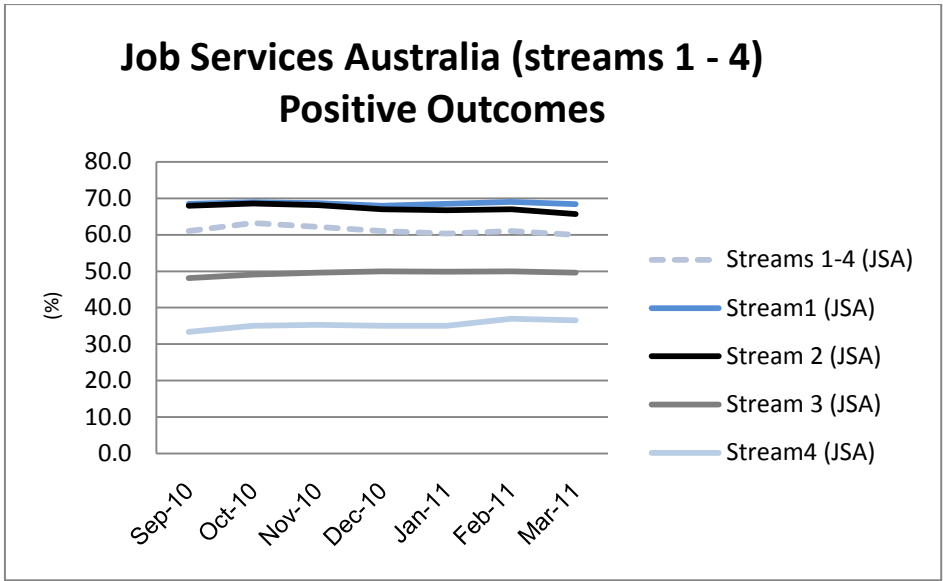
Other results of interest

44.4% of Job Services Australia Stream 1 employed job seekers would prefer to work more hours (42.9% for Stream 2, 46.2% for Stream 3 and 41.4% for Stream 4)

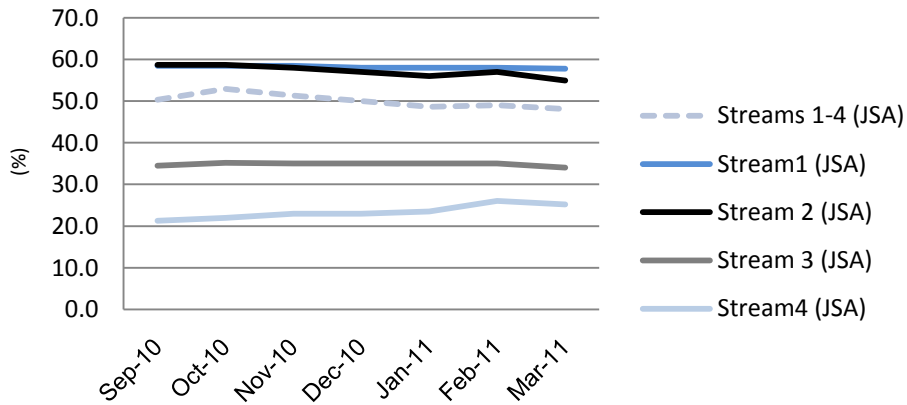
60.8% of Disability Employment Services (employment assistance) employed job seekers are working in casual, seasonal or temporary employment

33.9% of Indigenous Employment Program (employment related activities) employed job seekers are also studying

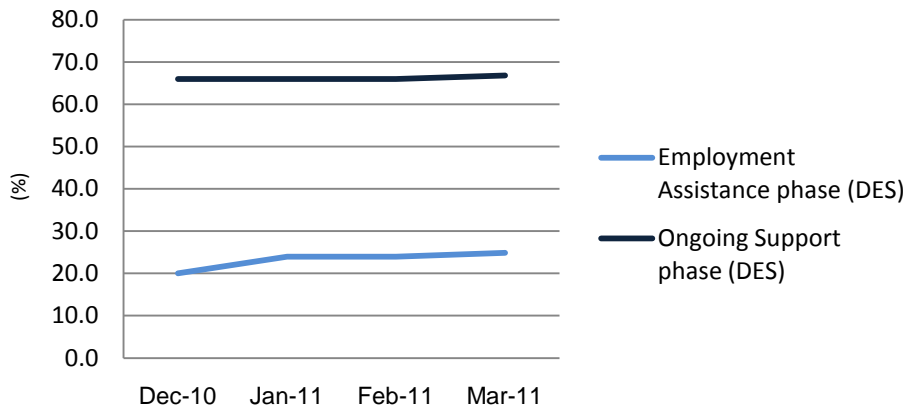
Time Series - Positive & Employment Outcomes



Job Services Australia (streams 1 - 4) Employment Outcomes



Disability Employment Services Employment Outcomes



Indigenous Employment Program Employment Outcomes

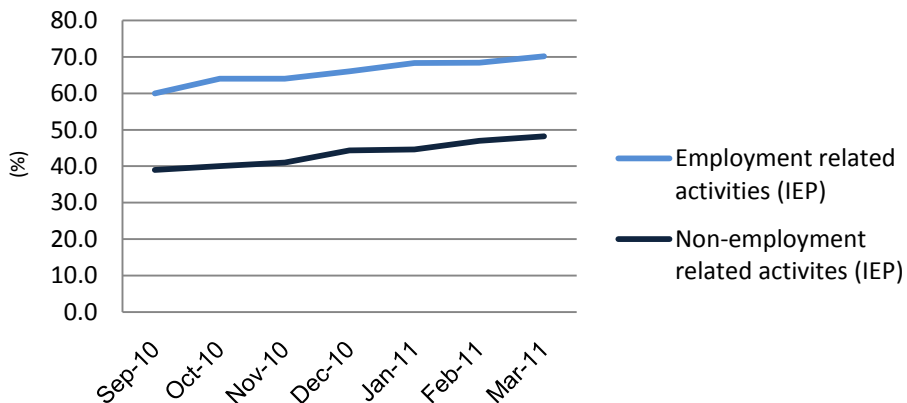


Table 1.1 – Labour Market Status

	Employed (%)	Unemployed (%)	Not in the Labour Force (%)	Positive Outcome (%)	Education & training (%)	In scope population ¹ (no.)
Year ending March 2011*						
Streams 1 to 4 (JSA)	48.1	35.3	16.5	60.0	18.7	1 441 680
Stream 1 (JSA)	57.8	32.8	9.4	68.4	19.5	508 860
Stream 2 (JSA)	54.9	32.9	12.1	65.7	18.3	457 757
Stream 3 (JSA)	34.0	42.0	24.0	49.6	19.8	326 372
Stream 4 (JSA)	25.2	36.8	38.0	36.5	15.1	148 691
Stream 1 (Limited) (JSA)	46.9	42.8	10.7	61.0	21.3	108 013
Employment Assistance (DES)	24.9	31.9	43.2	32.6	10.1	54 155
Ongoing Support (DES)	66.8	20.1	13.1	70.4	9.9	11 906
New Enterprise Incentive Scheme (NEIS)	83.9	12.0	4.2	86.5	11.1	2 945
Employment related activities (IEP)	70.2	24.4	5.3	74.6	26.0	6 359
Non-employment related activities (IEP)	48.2	43.3	8.6	60.3	27.0	7 370
Year ending December 2010**						
Streams 1 to 4 (JSA)	49.7	34.8	15.5	61.0	18.1	1 406 022
Stream 1 (JSA)	58.1	32.5	9.4	68.4	18.7	523 668
Stream 2 (JSA)	57.1	31.4	11.5	67.3	17.6	435 594
Stream 3 (JSA)	35.1	40.8	24.1	50.2	19.3	307 499
Stream 4 (JSA)	22.8	39.7	37.5	35.2	15.7	139 261
Stream 1 (Limited) (JSA)	47.3	42.6	10.1	61.0	20.8	117 664
Employment Assistance (DES)	20.2	32.6	47.3	27.8	9.3	30 568
Ongoing Support (DES)	66.2	20.0	13.8	69.8	9.3	9 063
New Enterprise Incentive Scheme (NEIS)	91.0	5.1	3.9	92.3	9.9	1 396
Employment related activities (IEP)	66.0r	27.9r	6.1r	70.8r	27.2r	4 050r
Non-employment related activities (IEP)	44.3r	45.6r	10.1r	57.5r	27.8r	6 745r

¹ The 'In-scope population' varies across programs and services. For further details regarding the in-scope populations shown in this report, see the 'Sampling, populations and results' section on pages 31 and 32

r: indicates figures revised from December 2010 LMAO report

Reference periods:

*Job seekers who participated in employment assistance in the 12 months (10 months for DES) to December 2010 and outcomes measured around 3 months later.

**Job seekers who participated in employment assistance in the 12 months (7 months for DES) to September 2010 and outcomes measured around 3 months later.

Table 1.2 – Employment

	Permanent employees (%)	Casual, Temporary or Seasonal employees (%)	Self Employed (%)	Employed, seeking more work (%)	Full-time employed, seeking more work (%)	Part-time employed, seeking more work (%)	Employed & studying (%)	In scope population (no.)
Year ending March 2011*								
Streams 1 to 4 (JSA)	38.0	53.1	9.0	44.0	8.7	34.8	14.2	693 933
Stream 1 (JSA)	38.8	52.3	9.0	44.4	9.5	34.4	15.2	293 953
Stream 2 (JSA)	40.8	50.6	8.6	42.9	8.6	33.7	13.7	251 466
Stream 3 (JSA)	30.1	60.8	9.1	46.2	6.7	38.7	12.2	110 992
Stream 4 (JSA)	35.7	53.3	11.0	41.4	9.4	33.2	15.2	37 522
Stream 1 (Limited) (JSA)	34.9	59.1	6.0	52.0	12.8	39.1	15.4	50 693
Employment Assistance (DES)	30.3	60.8	8.8	39.0	3.6	34.5	8.4	13 473
Ongoing Support (DES)	44.2	51.1	4.7	35.4	3.1	32.2	9.2	7 956
Employment related activities (IEP)	n.p	n.p	n.p	30.4	16.8	13.6	30.8	4 465
Non-employment related activities (IEP)	n.p	n.p	n.p	39.0	13.3	25.6	30.9	3 549
Year ending December 2010**								
Streams 1 to 4 (JSA)	38.4	52.6	9.1	35.4	6.4	26.0	14.2r	698 793
Stream 1 (JSA)	39.1	52.0	8.9	41.5	8.7	29.4	14.5r	304 251
Stream 2 (JSA)	41.3	49.9	8.8	29.2	4.7	22.2	14.5r	248 724
Stream 3 (JSA)	30.4	59.9	9.7	33.9	4.3	26.7	12.1r	107 932
Stream 4 (JSA)	35.2	54.0	10.9	36.7	6.7	25.7	14.8r	31 752
Stream 1 (Limited) (JSA)	34.7	58.9	6.4	49.6	12.4	35.6	15.0r	55 655
Employment Assistance (DES)	27.6	60.4	12.0	32.8	2.6	27.9	7.9r	6 175
Ongoing Support (DES)	45.2	50.6	4.2	31.3	2.7	27.6	9.4r	5 600
Employment related activities (IEP)	n.p	n.p	n.p	24.5r	16.8r	7.9r	33.9r	2 672r
Non-employment related activities (IEP)	n.p	n.p	n.p	37.6r	14.0r	23.3r	33.0r	2 988r

Not provided (n.p.): Indicates that sufficient data was not available to produce a reliable estimate for the particular group of job seekers.

r: indicates figures revised from December 2010 LMAO report

Reference periods:

*Job seekers who participated in employment assistance in the 12 months (10 months for DES) to December 2010 and outcomes measured around 3 months later.

**Job seekers who participated in employment assistance in the 12 months (7 months for DES) to September 2010 and outcomes measured around 3 months later.

Table 1.3 – Education

	Studying full time (%)	Studying part time (%)	Studying at Year 10, 11 or 12 level ¹ (%)	Studying at certificate level ¹ (%)	Studying at diploma level or higher ¹ (%)	In scope population (no.)
Year ending March 2011*						
Streams 1 to 4 (JSA)	54.1	45.9	6.6	53.6	24.1	270 068
Stream 1 (JSA)	55.3	44.7	4.0	47.9	34.4	99 082
Stream 2 (JSA)	52.7	47.3	6.8	56.3	23.1	83 949
Stream 3 (JSA)	53.1	46.9	7.9	58.0	13.4	64 511
Stream 4 (JSA)	56.3	43.7	12.9	55.8	13.5	22 526
Stream 1 (Limited) (JSA)	51.2	48.8	3.4	57.8	23.2	23 012
Employment Assistance (DES)	44.4	55.6	10.3	55.1	23.8	5 482
Ongoing Support (DES)	35.5	64.5	10.1	65.9	18.7	1 174
Employment related activities (IEP)	42.5	57.5	9.2	82.9	7.3	1 655
Non-employment related activities (IEP)	41.6	58.4	20.2	70.5	9.3	1 988
Year ending December 2010**						
Streams 1 to 4 (JSA)	52.7	47.5	5.5	47.2	21.4	254 490
Stream 1 (JSA)	55.6	44.9	3.8	44.1	31.1	97 926
Stream 2 (JSA)	50.0	50.0	6.0	50.6	20.0	76 665
Stream 3 (JSA)	50.8	49.2	6.3	47.6	10.8	59 347
Stream 4 (JSA)	50.9	45.6	9.3	47.6	11.1	21 864
Stream 1 (Limited) (JSA)	50.7	49.3	3.3	53.0	21.3	24 357
Employment Assistance (DES)	25.4	74.6	14.5	47.3	31.5	6 144
Ongoing Support (DES)	35.5	64.5	20.3	47.9	23.6	843
Employment related activities (IEP)	43.7	56.3	11.0	82.6	6.4	1 100
Non-employment related activities (IEP)	45.0r	55.0r	13.3r	80.3r	6.4r	1 873r

¹ Job seekers may be studying at an unspecified or 'other' level and so the sum of 'studying at Year 10, 11 or 12', 'Studying at certificate level' and 'Studying at diploma level or higher' will be less than 100%

Not provided (n.p.): Indicates that sufficient data was not available to produce a reliable estimate for the particular group of job seekers.
r: indicates figures revised from December 2010 LMAO report

Reference periods:

*Job seekers who participated in employment assistance in the 12 months (10 months for DES) to December 2010 and outcomes measured around 3 months later.

**Job seekers who participated in employment assistance in the 12 months(7 months for DES) to September 2010 and outcomes measured around 3 months later.

Table 2.1– Streams 1 to 4 (Job Services Australia)

	Employed full-time (%)	Employed Part-time (%)	Employed total (%)	Unemploy-ed (%)	Not in the Labour Force (%)	Education & training (%)	Positive Outcome (%)	In scope population (no.)
<i>Age Group (years)</i>								
15 to 20	20.6	26.6	47.2	37.6	15.2	36.3	68.9	257 372
21 to 24	26.4	27.3	53.7	33.6	12.7	24.9	68.0	198 189
25 to 34	24.8	25.8	50.7	34.8	14.5	20.2	63.1	322 453
35 to 49	19.0	30.0	49.0	35.7	15.2	17.6	60.8	431 602
50 or more	13.2	28.9	42.1	35.0	22.9	11.1	49.8	232 064
<i>Duration of unemployment</i>								
0 to less than 6	27.0	29.4	56.4	31.1	12.5	19.9	67.7	835 389
6 to less than 12	15.3	27.2	42.5	40.3	17.2	19.5	56.1	150 062
12 to less than 24	10.9	28.2	39.1	40.3	20.6	18.7	53.1	200 160
24 to less than 36	7.1	29.9	37.0	38.9	24.1	19.7	50.9	89 003
36 or more	6.3	24.1	30.5	44.5	25.0	11.6	39.4	167 056
<i>Educational attainment</i>								
Less than Year 10	10.1	19.6	29.7	41.1	29.2	18.4	45.3	200 542
Year 10 or 11	15.6	28.4	43.9	38.3	17.7	14.9	54.4	454 895
Year 12	20.4	31.2	51.6	34.2	14.2	24.8	66.0	268 561
University	27.8	32.1	59.9	29.2	10.8	21.1	71.1	211 109
Vocational	23.6	31.0	54.6	32.8	12.6	15.9	63.6	301 612
<i>Gender</i>								
Males	24.1	23.2	47.2	39.5	13.3	14.8	56.8	807 380
Females	14.5	34.6	49.1	30.7	20.1	22.9	63.6	634 300
<i>Equity groups</i>								
Disability	9.0	23.9	32.8	37.6	29.5	14.1	43.4	206 981
Indigenous	16.1	16.9	33.1	48.7	18.3	17.3	44.5	146 178
CALD	17.4	23.9	41.4	38.2	20.4	25.6	61.0	246 542
Low English Proficiency	9.1	17.9	27.0	40.2	32.8	34.9	58.3	73 018
CALD & Low English Proficiency	9.3	18.4	27.7	40.1	32.2	35.7	59.7	63 196
Sole parents	7.8	40.3	48.2	32.5	19.4	23.4	63.6	115 115
<i>Income support type</i>								
Newstart Allowance	19.1	27.5	46.6	36.5	16.9	15.5	56.7	915 467
Youth Allowance (other)	18.4	25.0	43.4	40.3	16.3	35.1	65.9	187 458
Disability Support Pension	3.7	17.1	20.8	33.6	45.4	14.9	32.2	12 133
Parenting Payment Single	7.7	40.6	48.3	32.4	19.4	23.6	63.8	111 966
Parenting Payment Partnered	8.5	30.2	38.7	36.5	24.9	27.9	60.9	22 943
TOTAL	19.4	28.7	48.1	35.3	16.5	18.7	60.0	1 441 680

Reference period:

Job seekers who participated in employment assistance in the 12 months to December 2010 and outcomes measured around 3 months later.

Table 2.2– Stream 1 (Job Services Australia)

	Employed full-time (%)	Employed Part-time (%)	Employed total (%)	Unemploy-ed (%)	Not in the Labour Force (%)	Education & training (%)	Positive Outcome (%)	In scope population (no.)
<i>Age Group (years)</i>								
15 to 20	23.8	32.5	56.4	33.0	10.6	36.2	76.3	91 206
21 to 24	32.9	29.1	62.0	28.7	9.3	24.6	74.3	94 950
25 to 34	32.4	26.4	58.8	32.1	9.1	20.4	69.4	129 005
35 to 49	26.9	31.0	57.9	33.6	8.5	15.7	66.8	139 285
50 or more	21.7	31.6	53.3	35.2	11.6	10.7	59.9	54 414
<i>Duration of unemployment</i>								
0 to less than 6	30.0	29.6	59.6	31.0	9.4	19.7	70.2	428 579
6 to less than 12	16.7	30.7	47.5	42.8	9.8	18.3	59.1	53 311
12 to less than 24	15.6	31.8	47.4	41.1	11.5	21.7	61.7	21 106
24 to less than 36	10.5	32.8	43.3	38.5	18.2	12.5	51.0	2 954
36 or more	n.p	n.p	n.p	n.p	n.p	n.p	n.p	n.p
<i>Educational attainment</i>								
Less than Year 10	18.5	25.2	43.8	41.3	15.0	14.7	55.2	27 369
Year 10 or 11	22.4	28.9	51.3	38.4	10.3	14.3	60.7	122 392
Year 12	24.6	32.7	57.4	32.6	10.0	25.8	71.0	125 997
University	33.2	31.9	65.1	27.8	7.1	22.2	75.9	109 077
Vocational	31.0	29.3	60.2	30.6	9.2	16.5	68.7	123 330
<i>Gender</i>								
Males	31.6	23.5	55.1	37.4	7.5	16.4	64.7	300 322
Females	22.5	38.9	61.4	26.7	11.9	23.3	73.4	208 538
<i>Equity groups</i>								
Disability	16.6	30.5	47.1	39.0	13.9	16.4	55.9	20 489
Indigenous	29.7	15.0	44.8	46.3	8.9	19.9	55.3	10 286
CALD	23.9	25.6	49.5	37.8	12.6	24.0	66.1	86 441
Low English Proficiency	14.4	21.6	35.9	41.4	22.6	32.4	63.9	11 086
CALD & Low English Proficiency	14.5	21.7	36.1	41.4	22.5	33.3	64.9	10 495
Sole parents	12.0	51.6	63.5	25.8	10.6	23.5	74.1	15 490
<i>Income support type</i>								
Newstart Allowance	27.6	29.2	56.8	33.9	9.3	16.4	65.9	343 786
Youth Allowance (other)	22.1	30.9	53.0	35.7	11.3	35.3	74.2	55 081
Disability Support Pension	n.p	n.p	18.3	48.8	32.9	n.p	25.4	465
Parenting Payment Single	11.4	52.3	63.8	25.5	10.8	23.5	74.3	14 861
Parenting Payment Partnered	14.9	34.5	49.4	31.2	19.3	23.5	65.8	4 197
TOTAL	27.3	30.4	57.8	32.8	9.4	19.5	68.4	508 860

Not provided (n.p.): Indicates that sufficient data was not available to produce a reliable estimate for the particular group of job seekers.

Reference period:

Job seekers who participated in employment assistance in the 12 months to December 2010 and outcomes measured around 3 months later.

Table 2.3– Stream 2 (Job Services Australia)

	Employed full-time (%)	Employed Part-time (%)	Employed total (%)	Unemploy-ed (%)	Not in the Labour Force (%)	Education & training (%)	Positive Outcome (%)	In scope population (no.)
<i>Age Group (years)</i>								
15 to 20	21.7	27.0	48.7	37.4	13.9	37.6	70.6	104 952
21 to 24	27.8	29.2	57.0	32.7	10.3	25.5	72.0	52 746
25 to 34	28.1	29.1	57.2	32.1	10.7	19.9	68.6	89 333
35 to 49	23.7	35.5	59.2	31.3	9.5	16.5	68.9	130 887
50 or more	16.8	34.6	51.4	32.1	16.5	10.2	57.4	79 839
<i>Duration of unemployment</i>								
0 to less than 6	28.0	30.4	58.4	29.7	11.9	18.9	68.6	296 922
6 to less than 12	17.5	30.2	47.7	39.2	13.1	17.7	60.6	46 194
12 to less than 24	13.0	35.3	48.3	39.9	11.8	17.6	59.7	91 467
24 to less than 36	6.3	38.4	44.7	38.6	16.6	26.6	64.2	16 989
36 or more	9.4	36.7	46.0	37.4	16.6	15.2	57.6	6 176
<i>Educational attainment</i>								
Less than Year 10	13.8	27.4	41.2	39.0	19.9	17.3	54.2	46 875
Year 10 or 11	18.2	32.4	50.6	36.2	13.2	16.0	61.2	155 123
Year 12	22.9	33.6	56.5	32.0	11.5	23.5	69.8	83 154
University	28.4	34.1	62.5	28.2	9.3	20.3	72.7	66 493
Vocational	25.1	35.7	60.8	29.8	9.4	15.9	69.0	104 419
<i>Gender</i>								
Males	27.6	27.1	54.7	36.0	9.4	14.4	63.7	262 048
Females	16.1	39.2	55.3	29.4	15.3	22.6	68.2	195 709
<i>Equity groups</i>								
Disability	14.6	30.3	44.9	37.7	17.4	14.7	55.3	44 689
Indigenous	22.8	23.7	46.5	42.5	11.0	24.6	59.9	29 526
CALD	21.2	26.5	47.7	37.0	15.3	23.7	64.7	78 220
Low English Proficiency	13.9	22.7	36.7	38.9	24.5	32.0	64.6	19 028
CALD & Low English Proficiency	13.5	23.0	36.5	38.5	25.0	32.5	65.0	17 792
Sole parents	11.3	49.3	60.7	27.1	12.3	21.4	72.7	34 474
<i>Income support type</i>								
Newstart Allowance	21.0	32.6	53.6	34.1	12.2	14.9	62.7	257 559
Youth Allowance (other)	19.9	26.3	46.2	39.5	14.3	36.6	68.3	82 005
Disability Support Pension	n.p.	n.p.	23.9	37.6	38.5	12.4	33.2	1 444
Parenting Payment Single	11.1	49.5	60.6	27.0	12.3	21.3	72.5	33 625
Parenting Payment Partnered	9.0	41.2	50.1	32.9	17.0	24.7	67.6	7 108
TOTAL	22.1	32.8	54.9	32.9	12.1	18.3	65.7	457 757

Reference period:

Job seekers who participated in employment assistance in the 12 months to December 2010 and outcomes measured around 3 months later.

Table 2.4 - Stream 3 (Job Services Australia)

	Employed full-time (%)	Employed Part-time (%)	Employed total (%)	Unemploy-ed (%)	Not in the Labour Force (%)	Education & training (%)	Positive Outcome (%)	In scope population (no.)
<i>Age Group (years)</i>								
15 to 20	13.2	18.3	31.4	46.1	22.5	33.4	56.2	34 322
21 to 24	11.4	22.0	33.4	46.3	20.3	26.5	53.2	34 134
25 to 34	11.2	25.2	36.4	44.1	19.5	23.7	54.6	68 442
35 to 49	9.1	28.7	37.9	43.2	19.0	23.4	56.3	109 588
50 or more	5.9	24.7	30.6	38.3	31.2	12.9	41.0	79 886
<i>Duration of unemployment</i>								
0 to less than 6	11.3	25.8	37.1	36.4	26.5	25.4	56.7	71 014
6 to less than 12	9.8	24.0	33.7	40.0	26.2	24.0	52.1	28 813
12 to less than 24	7.6	23.1	30.7	43.4	26.0	20.8	49.0	55 330
24 to less than 36	7.1	31.8	38.9	41.3	19.8	18.8	51.8	51 121
36 or more	7.0	27.2	34.1	45.1	20.8	12.2	43.5	120 093
<i>Educational attainment</i>								
Less than Year 10	6.8	18.8	25.6	44.8	29.7	22.6	45.5	84 065
Year 10 or 11	8.5	27.9	36.4	41.1	22.6	15.0	47.8	120 759
Year 12	7.6	26.0	33.6	42.7	23.6	25.5	53.2	43 131
University	10.7	31.9	42.5	38.0	19.5	20.5	56.2	26 525
Vocational	9.1	30.5	39.7	39.7	20.6	17.5	52.1	50 831
<i>Gender</i>								
Males	11.5	20.4	31.9	48.2	19.8	14.2	43.1	155 655
Females	5.9	29.9	35.8	37.2	27.0	24.1	54.8	170 717
<i>Equity groups</i>								
Disability	6.1	25.3	31.4	42.0	26.6	14.7	43.3	79 430
Indigenous	13.3	18.1	31.4	51.5	17.1	15.4	42.5	81 911
CALD	7.5	21.6	29.1	42.1	28.8	32.0	56.7	63 464
Low English Proficiency	6.0	16.9	22.9	44.3	32.7	39.9	59.0	34 310
CALD & Low English Proficiency	5.9	17.2	23.1	44.2	32.7	41.2	60.3	28 189
Sole parents	5.7	35.9	41.6	37.6	20.8	26.3	60.9	53 495
<i>Income support type</i>								
Newstart Allowance	7.9	24.0	31.9	43.4	24.7	16.8	45.6	211 112
Youth Allowance (other)	11.8	18.3	30.1	47.9	22.0	33.7	55.6	28 139
Disability Support Pension	4.1	20.4	24.5	38.2	37.0	18.1	37.9	6 506
Parenting Payment Single	5.7	36.1	41.8	37.6	20.7	26.4	61.3	52 274
Parenting Payment Partnered	6.4	23.0	29.4	42.2	28.4	32.9	58.4	10 270
TOTAL	8.3	25.7	34.0	42.0	24.0	19.8	49.6	326 372

Reference period:

Job seekers who participated in employment assistance in the 12 months to December 2010 and outcomes measured around 3 months later.

Table 2.5 - Stream 4 (Job Services Australia)

	Employed full-time (%)	Employed Part-time (%)	Employed total (%)	Unemploy-ed (%)	Not in the Labour Force (%)	Education & training (%)	Positive Outcome (%)	In scope population (no.)
<i>Age Group (years)</i>								
15 to 20	14.7	15.5	30.2	42.9	26.9	35.0	53.2	26 892
21 to 24	15.7	20.8	36.6	39.2	24.2	20.9	48.8	16 359
25 to 34	15.5	17.2	32.6	33.6	33.7	13.5	42.5	35 673
35 to 49	7.0	16.1	23.1	36.9	40.0	13.3	33.8	51 842
50 or more	4.0	14.3	18.3	32.3	49.4	8.2	25.0	17 925
<i>Duration of unemployment</i>								
0 to less than 6	15.0	25.8	40.8	33.3	25.8	20.2	53.3	38 874
6 to less than 12	14.6	16.1	30.8	36.7	32.6	20.0	44.6	21 744
12 to less than 24	7.3	14.5	21.8	35.6	42.6	16.4	35.5	32 257
24 to less than 36	7.4	15.8	23.2	32.5	44.2	17.0	35.7	17 939
36 or more	3.1	11.7	14.8	44.5	40.7	8.7	21.9	37 877
<i>Educational attainment</i>								
Less than Year 10	7.0	9.2	16.2	36.1	47.7	13.8	28.6	42 233
Year 10 or 11	8.9	17.1	25.9	38.2	35.9	13.0	35.9	56 621
Year 12	8.8	20.7	29.5	35.6	35.0	22.7	42.4	16 279
University	9.1	21.7	30.8	28.2	41.0	16.2	44.7	9 014
Vocational	9.1	20.7	29.8	42.5	27.8	9.8	38.0	23 032
<i>Gender</i>								
Males	10.5	15.2	25.6	41.8	32.6	11.8	34.0	89 355
Females	6.3	17.7	24.0	30.5	45.4	19.1	39.0	59 336
<i>Equity groups</i>								
Disability	6.1	15.2	21.3	31.6	47.1	12.1	30.8	62 373
Indigenous	12.0	5.6	17.6	47.5	34.9	13.9	28.0	24 455
CALD	5.6	13.2	18.8	31.5	49.7	20.1	35.4	18 417
Low English Proficiency	4.3	5.8	10.2	25.1	64.7	24.8	34.5	8 594
CALD & Low English Proficiency	4.7	6.0	10.7	24.8	64.5	24.7	34.8	6 720
Sole parents	n.p.	n.p.	20.9	33.6	45.4	16.7	34.8	11 656
<i>Income support type</i>								
Newstart Allowance	8.5	16.4	24.9	37.0	38.1	11.8	33.8	103 010
Youth Allowance (other)	12.4	14.1	26.5	44.6	28.9	31.1	49.1	22 233
Disability Support Pension	n.p.	n.p.	13.4	22.2	64.5	11.0	22.5	3 718
Parenting Payment Single	n.p.	n.p.	21.0	33.4	45.6	17.0	35.0	11 206
Parenting Payment Partnered	n.p.	n.p.	15.6	28.4	56.0	21.2	28.8	1 368
TOTAL	8.6	16.6	25.2	36.8	38.0	15.1	36.5	148 691

Not provided (n.p.): Indicates that sufficient data was not available to produce a reliable estimate for the particular group of job seekers.

Reference period:

Job seekers who participated in employment assistance in the 12 months to December 2010 and outcomes measured around 3 months later.

Table 2.6 - Job Placements (Job Services Australia)

	Employed full-time (%)	Employed Part-time (%)	Employed total (%)	Unemploy-ed (%)	Not in the Labour Force (%)	Education & training (%)	Positive Outcome (%)	In scope population ¹ (no.)
<i>Age Group (years)</i>								
15 to 20	33.0	36.7	69.7	26.3	4.0	27.2	78.6	75 702
21 to 24	35.0	36.1	71.1	25.6	3.3	19.4	77.1	65 838
25 to 34	36.6	33.9	70.5	26.2	3.3	15.5	75.5	110 187
35 to 49	32.6	40.6	73.2	23.8	3.0	11.3	76.4	141 370
50 or more	31.8	41.7	73.6	23.4	3.1	7.1	75.7	61 850
<i>Duration of unemployment</i>								
0 to less than 6	43.0	34.7	77.6	19.3	3.0	14.5	81.5	178 244
6 to less than 12	33.3	38.1	71.4	25.1	3.5	14.3	76.2	90 329
12 to less than 24	25.8	41.4	67.1	30.0	2.9	12.7	71.5	98 486
24 to less than 36	18.0	48.1	66.1	30.4	3.5	12.0	70.3	38 666
36 or more	15.4	46.6	62.0	33.9	4.0	10.1	65.9	49 222
<i>Educational attainment</i>								
Less than Year 10	23.5	39.7	63.2	32.3	4.5	10.1	67.4	51 562
Year 10 or 11	29.0	38.6	67.6	28.7	3.7	11.1	71.6	151 660
Year 12	35.1	40.7	75.8	21.1	3.0	18.6	81.1	76 068
University	41.3	39.1	80.4	17.3	2.3	16.4	84.5	56 283
Vocational	35.1	37.2	72.3	24.9	2.9	12.1	75.8	117 721
<i>Gender</i>								
Males	39.7	27.1	66.8	30.0	3.2	10.6	70.5	281 763
Females	25.1	53.3	78.4	18.3	3.3	17.0	83.1	173 184
<i>Equity groups</i>								
Disability	22.3	43.5	65.8	29.9	4.3	10.6	69.5	67 243
Indigenous	30.6	33.4	64.0	32.5	3.5	15.1	69.0	42 064
CALD	35.2	38.6	73.8	22.5	3.7	14.8	78.8	62 204
Low English Proficiency	29.8	43.9	73.7	20.8	5.5	17.1	80.9	13 580
CALD & Low English Proficiency	29.5	45.0	74.5	20.1	5.4	17.7	81.9	12 063
Sole parents	14.0	68.5	82.4	14.9	2.7	14.9	86.1	32 850
<i>Income support type</i>								
Newstart Allowance	27.6	39.4	67.0	29.6	3.4	11.6	71.0	261 713
Youth Allowance (other)	22.0	41.6	63.6	32.0	4.5	23.2	73.4	46 368
Disability Support Pension	11.8	43.8	55.6	32.5	11.9	17.8	61.9	2 176
Parenting Payment Single	13.7	68.9	82.6	14.7	2.7	14.9	86.1	31 664
Parenting Payment Partnered	14.4	67.8	82.2	14.9	2.9	15.4	86.9	4 480
TOTAL	33.1	38.7	71.7	25.0	3.2	13.5	75.9	454 947

¹ For Job Placements, the 'in-scope population' shows the number of job placements that were recorded in the DEEWR administrative system in the reference period. For further details regarding the in-scope populations shown in this report, see the 'Sampling, populations and results' section on pages 31 and 32

Reference period:

Job seekers who were placed in jobs (that were recorded in the DEEWR administrative system) in the 12 months to December 2010 and outcomes measured around 3 months later.

Table 2.7 - Activities (Job Services Australia)

	Employed full-time (%)	Employed part-time (%)	Employed total (%)	Unemploy-ed (%)	Not in the Labour Force (%)	Education & training (%)	Positive Outcome (%)	In scope population ¹ (no.)
Intensive Activity²	15.5	29.3	44.7	48.2	7.0	23.7	60.1	102 450
Non PPP training	13.3	29.5	42.8	45.1	12.1	44.2	71.7	21 061
PPP training	17.9	30.6	48.5	44.2	7.3	24.1	63.2	1 807
Training in job search techniques	16.2	29.6	45.8	49.0	5.2	17.9	57.2	74 174
Voluntary Work/ work experience	12.3	31.8	44.2	46.1	9.7	16.6	54.1	2 378
Other activity	14.0	16.5	30.5	44.4	25.0	49.8	72.9	1 285
Work Experience Phase³	4.3	20.5	24.7	62.8	12.5	32.9	51.6	64 541
Non PPP training	3.3	22.2	25.4	59.5	15.0	44.7	61.2	34 836
PPP training	6.8	23.9	30.7	62.4	6.9	24.4	48.6	3 563
Work for the Dole	6.3	15.8	22.0	71.4	6.6	12.9	33.8	13 829
Voluntary Work/ work experience	2.4	23.1	25.6	60.9	13.6	13.5	35.6	3 268
Other activity	3.7	16.5	20.2	55.6	24.2	48.1	64.0	3 931
All activities⁴	11.9	24.5	36.4	50.7	12.9	30.9	58.9	314 835
Non PPP training	10.2	25.1	35.3	48.6	16.1	43.0	66.4	147 218
PPP training	16.8	26.6	43.3	46.5	10.2	22.0	58.0	18 917
Work for the Dole	8.6	15.7	24.2	65.2	10.6	12.4	34.8	26 752
Drought Force	14.8	16.9	31.7	23.6	44.6	n.p.	38.1	456
Training in job search techniques	15.5	28.0	43.5	51.0	5.5	17.7	55.2	90 880
Voluntary Work/ work experience	7.9	22.7	30.5	49.6	19.9	13.8	40.1	10 222
Other activity	10.6	15.7	26.3	48.9	24.8	44.7	65.4	19 402

¹ For activities, the 'in-scope population' shows the number of exits from activity placements in the reference period. For further details regarding the in-scope populations shown in this report, see the 'Sampling, populations and results' section on pages 31 and 32.

² Outcomes for job seekers who undertook an activity as part of an Intensive Activity. Results for some individual activities are not shown but are included in the Intensive Activity total.

³ Outcomes for job seekers who undertook an activity in the Work Experience Phase. Results for some individual activities are not shown but are included in the Work Experience Phase total.

⁴ Outcomes for job seekers who undertook an activity at any time in assistance (job seekers may undertake an activity in the Work Experience Phase (WEP), as an intensive activity (IA), or at any time in assistance deemed appropriate by providers). The In-scope populations are larger than the combined totals for IA and WEP as activities that were undertaken outside of these phases of assistance are also included.

Not provided (n.p.): Indicates that sufficient data was not available to produce a reliable estimate for the particular group of job seekers.

Reference period:

Job seekers who exited an activity in the 12 months to December 2010 and outcomes measured around 3 months later.

Table 2.8 – Work for the Dole (Job Services Australia)

	Employed full-time (%)	Employed Part-time (%)	Employed total (%)	Unemploy-ed (%)	Not in the Labour Force (%)	Education & training (%)	Positive Outcome (%)	In scope population (no.)
<i>Age Group (years)</i>								
15 to 20	n.p.	n.p.	21.3	n.p.	n.p.	23.7	42.8	3 322
21 to 24	n.p.	n.p.	31.8	n.p.	n.p.	18.2	47.7	4 315
25 to 34	12.0	18.5	30.5	62.5	7.0	11.7	40.7	6 435
35 to 49	7.2	16.5	23.6	67.1	9.2	11.4	32.5	9 771
50 or more	5.9	12.7	18.6	62.7	18.7	9.4	27.5	2 909
<i>Duration of unemployment</i>								
0 to less than 6	n.p.	n.p.	32.4	55.9	11.7	17.7	42.9	2 294
6 to less than 12	n.p.	n.p.	26.5	n.p.	n.p.	n.p.	38.2	1 533
12 to less than 24	11.4	19.1	30.5	57.9	11.5	17.1	45.4	3 572
24 to less than 36	9.1	20.1	29.2	60.5	10.3	10.7	39.0	3 951
36 or more	7.0	13.2	20.3	69.5	10.2	11.1	30.3	15 402
<i>Educational attainment</i>								
Less than Year 10	6.6	11.7	18.3	66.6	15.1	11.1	28.5	5 589
Year 10 or 11	7.7	16.9	24.6	65.6	9.8	10.6	33.8	10 433
Year 12	9.3	15.9	25.3	68.2	6.5	15.9	39.1	3 897
University	15.5	17.4	33.0	n.p.	n.p.	14.4	44.4	1 889
Vocational	7.3	17.6	24.9	64.2	10.9	12.8	35.0	4 919
<i>Gender</i>								
Males	11.8	10.8	22.6	68.5	8.9	10.2	31.2	17 433
Females	4.7	21.6	26.3	60.5	13.3	15.7	39.8	9 319
<i>Equity groups</i>								
Disability	n.p.	n.p.	15.8	67.3	17.0	11.0	25.5	4 045
Indigenous	n.p.	n.p.	17.3	n.p.	n.p.	16.3	30.8	4 517
CALD	6.4	18.4	24.8	58.9	16.3	13.9	36.0	3 303
Low English Proficiency	5.5	13.3	18.8	66.8	14.4	13.6	26.7	1 033
CALD & Low English Proficiency	n.p.	n.p.	16.7	64.9	18.4	n.p.	26.7	810
Sole parents	n.p.	n.p.	27.2	61.6	11.2	17.4	41.0	2 074
<i>Income support type</i>								
Newstart Allowance	9.4	14.7	24.1	65.9	10.0	10.4	33.0	20 663
Youth Allowance (other)	n.p.	n.p.	23.2	n.p.	n.p.	24.8	45.5	3 087
Disability Support Pension	n.p.	n.p.	n.p.	60.7	n.p.	n.p.	n.p.	148
Parenting Payment Single	n.p.	n.p.	27.6	61.6	10.8	17.1	41.0	2 022
Parenting Payment Partnered	n.p.	n.p.	n.p.	71.6	n.p.	n.p.	29.5	360
TOTAL	8.6	15.7	24.2	65.2	10.6	12.4	34.8	26 752

Not provided (n.p.): Indicates that sufficient data was not available to produce a reliable estimate for the particular group of job seekers.

Reference period:

Job seekers who exited Work for the Dole placements in the 12 months to December 2010 and outcomes measured around 3 months later.

Table 2.9 - Training in Job Search Techniques (Job Services Australia)

	Employed full-time (%)	Employed Part-time (%)	Employed total (%)	Unemploy-ed (%)	Not in the Labour Force (%)	Education & training (%)	Positive Outcome (%)	In scope population (no.)
<i>Age Group (years)</i>								
15 to 20	9.1	29.6	38.8	55.2	6.0	27.4	57.9	13 327
21 to 24	18.3	30.3	48.6	45.6	5.8	21.8	62.4	18 643
25 to 34	17.9	27.5	45.4	49.8	4.8	19.3	57.2	23 887
35 to 49	15.8	27.3	43.1	51.7	5.2	14.3	52.9	24 824
50 or more	14.3	27.7	41.9	51.9	6.1	12.3	49.8	10 199
<i>Duration of unemployment</i>								
0 to less than 6	17.7	28.9	46.6	48.2	5.1	17.8	58.0	51 372
6 to less than 12	13.9	28.3	42.2	52.1	5.7	17.9	54.4	20 750
12 to less than 24	11.8	27.7	39.5	54.7	5.8	19.1	51.7	12 718
24 to less than 36	n.p.	n.p.	33.6	n.p.	n.p.	13.6	45.3	2 441
36 or more	n.p.	n.p.	24.8	n.p.	n.p.	9.1	33.0	3 599
<i>Educational attainment</i>								
Less than Year 10	10.8	21.9	32.7	59.3	8.0	15.0	44.8	5 951
Year 10 or 11	13.3	25.9	39.2	55.5	5.3	13.6	48.7	23 065
Year 12	13.3	30.1	43.4	50.9	5.7	20.5	56.7	21 759
University	20.4	29.5	49.9	45.0	5.1	20.8	63.2	17 730
Vocational	15.6	28.8	44.4	50.4	5.1	15.8	54.2	22 258
<i>Gender</i>								
Males	17.3	22.5	39.8	55.6	4.6	15.4	50.5	57 112
Females	13.3	35.5	48.8	44.6	6.6	20.8	61.6	33 768
<i>Equity groups</i>								
Disability	9.8	22.7	32.4	59.7	7.8	18.4	46.0	6 473
Indigenous	n.p.	n.p.	28.1	n.p.	n.p.	20.7	43.3	3 648
CALD	14.7	25.1	39.8	54.0	6.2	21.9	55.5	17 498
Low English Proficiency	10.0	19.0	29.0	58.9	12.1	34.1	56.8	2 038
CALD & Low English Proficiency	9.1	20.2	29.3	60.4	10.2	32.4	55.1	1 911
Sole parents	8.9	32.5	41.4	46.0	12.6	20.4	55.6	2 622
<i>Income support type</i>								
Newstart Allowance	16.3	27.6	43.8	51.1	5.0	16.3	54.5	71 547
Youth Allowance (other)	8.2	28.7	36.9	57.1	6.0	27.3	56.1	11 081
Disability Support Pension	n.p.	n.p.	n.p.	n.p.	n.p.	n.p.	n.p.	200
Parenting Payment Single	8.7	33.3	42.0	45.9	12.2	20.5	56.1	2 502
Parenting Payment Partnered	n.p.	n.p.	30.9	n.p.	n.p.	16.1	42.0	530
TOTAL	15.5	28.0	43.5	51.0	5.5	17.7	55.2	90 880

Not provided (n.p.): Indicates that sufficient data was not available to produce a reliable estimate for the particular group of job seekers.

Reference period:

Job seekers who exited Training in Job Search Techniques placements in the 12 months to December 2010 and outcomes measured around 3 months later.

Table 2.10 - Employment & Positive Outcomes by Region (Job Services Australia)

	Stream 1 Employed (%)	Stream 2 Employed (%)	Stream 3 Employed (%)	Stream 4 Employed (%)	Stream 1 Positive Outcomes (%)	Stream 2 Positive Outcomes (%)	Stream 3 Positive Outcomes (%)	Stream 4 Positive Outcomes (%)
Australia	57.8	54.9	34.0	25.2	68.4	65.7	49.6	36.5
Sydney	52.7	50.1	28.3	19.8	66.2	63.5	50.4	31.4
Hunter and North Coast	61.0	56.6	35.6	26.1	71.7	67.4	49.0	32.6
Western NSW	64.1	59.5	33.0	25.2	72.8	68.8	53.0	41.0
Southern NSW ¹	57.9	56.3	37.9	27.8	69.6	67.3	51.5	41.6
Northern NSW	58.8	55.6	40.5	26.1	70.9	69.3	52.2	40.0
<i>New South Wales</i>	55.7	53.1	32.3	22.4	68.2	65.7	50.6	33.8
Melbourne	58.9	55.7	30.3	29.4	70.6	67.0	53.3	40.8
Eastern Victoria	58.6	56.5	36.8	23.6	67.6	65.1	49.2	39.1
Western Victoria	62.7	59.3	39.7	26.0	72.7	68.9	50.8	35.4
<i>Victoria</i>	59.5	56.5	33.0	28.2	70.7	67.1	52.2	39.4
Brisbane	58.9	57.1	33.8	28.9	67.3	65.5	48.0	41.5
Southern Queensland	55.0	54.3	35.9	37.8	65.2	62.2	45.9	45.2
Central and North Queensland	58.4	57.9	35.5	22.9	67.1	65.2	44.6	32.0
<i>Queensland</i>	58.3	57.0	34.2	29.2	67.0	65.3	46.7	40.6
Perth	58.5	58.8	35.0	28.0	67.2	67.0	49.5	37.0
Greater Western Australia	61.0	59.0	36.1	41.1	69.6	68.6	44.8	42.3
<i>Western Australia</i>	58.9	59.0	35.7	28.4	67.5	67.4	48.3	36.6
Adelaide	58.6	55.9	38.8	25.1	69.3	67.5	56.5	36.8
South Australia Country	61.2	54.4	37.2	15.9	69.2	61.9	51.3	40.0
<i>South Australia</i>	59.6	55.4	38.5	23.7	69.5	65.6	55.4	37.7
<i>Tasmania</i>	61.3	54.6	33.1	26.2	69.6	64.9	48.9	34.4
<i>Northern Territory</i>	n.p.	n.p.	41.4	23.2	65.3	58.6	46.6	37.1

Not provided (n.p.): Indicates that sufficient data was not available to produce a reliable estimate for the particular group of job seekers.

Reference period:

Job seekers who participated in employment assistance in the 12 months to December 2010 and outcomes measured around 3 months later.

¹ Outcomes for the ACT are included in the Southern NSW region

Disability Employment Services

Table 3.1 - Employment Assistance (Disability Employment Services)

	Employed full-time (%)	Employed Part-time (%)	Employed total (%)	Unemploy-ed (%)	Not in the Labour Force (%)	Education & training (%)	Positive Outcome (%)	In scope population (no.)
<i>Age Group (years)</i>								
15 to 20	6.8	21.8	28.6	44.9	26.6	24.5	47.1	4 789
21 to 24	11.3	19.6	31.0	39.5	29.5	21.2	47.3	4 142
25 to 34	10.5	17.9	28.4	37.7	33.9	12.5	37.3	9 652
35 to 49	7.3	18.7	26.0	32.7	41.3	9.6	33.2	19 532
50 or more	3.9	17.8	21.7	25.8	52.6	6.3	26.7	16 040
<i>Duration of unemployment</i>								
0 to less than 6	9.2	20.4	29.6	27.1	43.4	11.6	38.3	12 430
6 to less than 12	10.8	19.7	30.5	26.7	42.8	10.2	37.5	7 506
12 to less than 24	7.2	20.3	27.5	29.5	43.0	8.9	33.6	10 946
24 to less than 36	3.8	18.6	22.4	31.9	45.7	11.8	32.6	7 127
36 or more	2.7	15.9	18.6	39.0	42.4	8.9	25.8	16 146
<i>Educational attainment</i>								
Less than Year 10	3.3	15.0	18.3	28.9	52.8	7.5	24.6	11 592
Year 10 or 11	5.0	18.1	23.1	32.0	44.9	6.3	28.2	17 122
Year 12	7.5	19.2	26.6	34.0	39.4	13.4	37.1	7 874
University	9.2	23.7	32.9	31.7	35.4	12.2	40.9	5 774
Vocational	11.1	19.1	30.2	31.2	38.6	10.1	37.1	8 078
<i>Gender</i>								
Males	8.5	16.8	25.3	35.5	39.3	7.9	31.2	32 048
Females	4.0	20.4	24.4	27.5	48.1	12.8	34.3	22 107
<i>Equity groups</i>								
Disability	6.0	18.0	24.0	31.6	44.4	9.5	31.3	46 920
Indigenous	n.p	n.p	20.2	38.4	41.4	9.0	26.5	2 782
CALD	5.2	13.6	18.8	28.7	52.5	12.2	28.6	10 207
Low English Proficiency	3.0	8.8	11.9	25.7	62.4	15.3	25.3	3 603
CALD & Low English Proficiency	n.p	n.p	11.3	26.5	62.3	15.8	25.2	3 307
Sole parents	n.p	n.p	22.0	35.0	43.0	12.6	32.3	2 308
<i>Income support type</i>								
Newstart Allowance	7.3	17.9	25.2	33.5	41.3	8.7	31.8	27 181
Youth Allowance (other)	n.p	n.p	25.7	43.0	31.4	n.p	35.0	1 519
Disability Support Pension	2.6	18.1	20.7	30.0	49.3	10.6	29.0	15 734
Parenting Payment Single	n.p	n.p	22.1	34.4	43.5	12.5	32.7	2 219
Parenting Payment Partnered	n.p	n.p	n.p	n.p	n.p	n.p	n.p	n.p
TOTAL	6.4	18.5	24.9	31.9	43.2	10.1	32.6	54 155

Not provided (n.p.): Indicates that sufficient data was not available to produce a reliable estimate for the particular group of job seekers.

Reference period:

Job seekers who participated in employment assistance in the 10 months to December 2010 and outcomes measured around 3 months later.

Table 3.2 - Employment Assistance through Disability Management Service (Disability Employment Services)

	Employed full-time (%)	Employed Part-time (%)	Employed total (%)	Unemploy-ed (%)	Not in the Labour Force (%)	Education & training (%)	Positive Outcome (%)	In scope population (no.)
<i>Age Group (years)</i>								
15 to 20	n.p	n.p	26.8	47.5	25.7	27.4	46.6	924
21 to 24	n.p	n.p	39.6	27.9	32.5	26.8	60.2	1 439
25 to 34	14.7	19.3	33.9	37.8	28.3	13.4	41.4	4 081
35 to 49	8.6	21.1	29.8	30.8	39.5	10.4	37.3	10 074
50 or more	4.8	19.4	24.2	24.8	50.9	6.1	29.0	8 502
<i>Duration of unemployment</i>								
0 to less than 6	11.8	19.2	31.0	26.2	42.8	10.7	38.5	5 396
6 to less than 12	12.8	22.2	35.0	24.7	40.2	8.5	40.1	4 310
12 to less than 24	7.5	21.9	29.4	27.2	43.4	8.4	35.2	6 048
24 to less than 36	4.1	23.0	27.1	29.8	43.1	12.0	37.1	3 474
36 or more	2.5	17.9	20.4	37.8	41.8	8.2	26.7	5 792
<i>Educational attainment</i>								
Less than Year 10	4.1	15.9	20.0	28.3	51.7	6.7	26.1	4 992
Year 10 or 11	6.4	20.7	27.0	30.3	42.7	5.6	31.6	8 330
Year 12	6.7	22.5	29.2	31.2	39.6	13.3	38.9	3 772
University	10.5	25.9	36.4	29.0	34.6	13.8	44.4	3 064
Vocational	13.2	21.2	34.3	28.6	37.0	10.5	41.2	4 268
<i>Gender</i>								
Males	10.3	17.3	27.6	34.0	38.4	7.4	32.9	14 413
Females	4.9	23.7	28.6	24.6	46.8	11.8	37.3	10 607
<i>Equity groups</i>								
Disability	7.2	19.9	27.0	29.2	43.7	8.6	33.3	20 243
Indigenous	n.p	n.p	n.p	n.p	n.p	n.p	n.p	n.p
CALD	6.8	14.8	21.6	29.0	49.4	12.3	31.5	5 614
Low English Proficiency	n.p	n.p	11.3	30.6	58.1	15.1	24.9	1 939
CALD & Low English Proficiency	n.p	n.p	11.7	31.2	57.1	15.5	25.6	1 871
Sole parents	n.p	n.p	23.9	36.4	39.7	11.0	32.3	1 465
<i>Income support type</i>								
Newstart Allowance	8.1	20.5	28.7	31.0	40.3	9.0	35.1	16 408
Youth Allowance (other)	n.p	n.p	n.p	n.p	n.p	n.p	40.4	528
Disability Support Pension	n.p	n.p	15.1	20.9	64.0	5.9	20.4	2 836
Parenting Payment Single	n.p	n.p	23.7	35.5	40.8	10.6	32.2	1 433
Parenting Payment Partnered	n.p	n.p	n.p	n.p	n.p	n.p	24.9	346
TOTAL	7.7	20.5	28.2	29.7	42.1	9.5	35.1	25 020

Not provided (n.p.): Indicates that sufficient data was not available to produce a reliable estimate for the particular group of job seekers.

Reference period:

Job seekers who participated in employment assistance in the 10 months to December 2010 and outcomes measured around 3 months later.

Table 3.3 - Employment Assistance through Employment Support Service (Disability Employment Services)

	Employed full-time (%)	Employed Part-time (%)	Employed total (%)	Unemploy-ed (%)	Not in the Labour Force (%)	Education & training (%)	Positive Outcome (%)	In scope population (no.)
<i>Age Group (years)</i>								
15 to 20	n.p	n.p	28.0	45.4	26.6	24.0	46.1	3 865
21 to 24	n.p	n.p	27.1	43.1	29.9	20.1	42.9	2 703
25 to 34	7.7	17.0	24.6	37.2	38.2	12.1	34.4	5 571
35 to 49	6.0	16.1	22.1	34.5	43.3	8.9	29.1	9 458
50 or more	2.8	16.0	18.8	26.9	54.3	6.5	24.1	7 538
<i>Duration of unemployment</i>								
0 to less than 6	7.3	21.3	28.5	28.1	43.4	12.2	38.1	7 034
6 to less than 12	8.1	16.1	24.2	30.1	45.8	12.6	34.0	3 196
12 to less than 24	7.0	18.8	25.8	31.6	42.7	9.6	32.1	4 898
24 to less than 36	3.6	14.4	18.0	34.3	47.7	11.8	28.5	3 653
36 or more	2.7	15.0	17.8	40.0	42.2	9.4	25.5	10 354
<i>Educational attainment</i>								
Less than Year 10	2.8	14.6	17.5	28.9	53.6	8.0	24.0	6 600
Year 10 or 11	3.8	15.9	19.7	34.2	46.0	7.0	25.4	8 792
Year 12	8.2	16.1	24.3	36.6	39.1	13.7	35.5	4 102
University	7.5	21.5	29.0	34.1	37.0	10.5	36.8	2 710
Vocational	8.2	17.3	25.5	34.3	40.1	9.6	32.3	3 810
<i>Gender</i>								
Males	7.1	16.5	23.5	36.7	39.8	8.4	30.0	17 635
Females	3.2	17.4	20.6	30.3	49.1	13.8	31.8	11 500
<i>Equity groups</i>								
Disability	5.1	16.8	21.9	33.7	44.4	10.3	30.1	26 677
Indigenous	n.p	n.p	n.p	n.p	n.p	n.p	n.p	n.p
CALD	3.2	12.2	15.4	28.0	56.6	12.2	25.3	4 593
Low English Proficiency	n.p	n.p	12.6	19.8	67.6	15.9	26.1	1 664
CALD & Low English Proficiency	n.p	n.p	10.1	20.4	69.5	16.5	24.2	1 436
Sole parents	n.p	n.p	18.4	31.8	49.8	16.8	32.9	843
<i>Income support type</i>								
Newstart Allowance	5.9	14.0	20.0	37.2	42.9	8.2	26.9	10 773
Youth Allowance (other)	n.p	n.p	n.p	n.p	n.p	n.p	34.0	991
Disability Support Pension	n.p	n.p	22.0	32.1	45.9	11.7	30.9	12 898
Parenting Payment Single	n.p	n.p	18.5	32.9	48.6	19.1	36.1	786
Parenting Payment Partnered	n.p	n.p	n.p	n.p	n.p	n.p	32.1	224
TOTAL	5.3	17.0	22.3	34.0	43.7	10.8	30.8	29 135

Not provided (n.p.): Indicates that sufficient data was not available to produce a reliable estimate for the particular group of job seekers.

Reference period:

Job seekers who participated in employment assistance in the 10 months to December 2010 and outcomes measured around 3 months later.

Table 3.4 - Ongoing Support (Disability Employment Services)

	Employed full-time (%)	Employed Part-time (%)	Employed total (%)	Unemploy-ed (%)	Not in the Labour Force (%)	Education & training (%)	Positive Outcome (%)	In scope population (no.)
<i>Age Group (years)</i>								
15 to 20	n.p	n.p	n.p	n.p	n.p	19.4	69.9	1 535
21 to 24	n.p	n.p	n.p	n.p	n.p	14.0	71.6	1 482
25 to 34	19.8	48.4	68.2	23.2	8.5	9.5	71.7	2 707
35 to 49	18.0	53.1	71.2	16.3	12.5	7.8	73.7	3 739
50 or more	13.0	52.2	65.2	15.7	19.0	7.6	67.8	2 443
<i>Duration of unemployment</i>								
0 to less than 6	30.6	36.1	66.7	19.2	14.0	11.9	70.5	1 880
6 to less than 12	21.4	50.7	72.1	18.2	9.7	15.7	76.0	1 318
12 to less than 24	18.1	45.6	63.8	22.9	13.3	9.6	68.6	2 046
24 or more	15.9	50.0	65.9	19.8	14.3	10.4	68.5	1 527
<i>Educational attainment</i>								
Less than Year 10	10.6	53.2	63.8	19.4	16.8	6.3	66.1	2 077
Year 10 or 11	15.6	51.8	67.3	21.6	11.1	8.6	70.0	3 448
Year 12	17.6	53.2	70.8	17.2	12.0	17.0	76.5	1 677
University	24.0	47.2	71.2	17.5	11.3	n.p	73.8	1 063
Vocational	13.8	51.3	65.1	20.1	14.8	n.p	68.8	1 387
<i>Gender</i>								
Males	20.7	44.9	65.6	23.6	10.8	9.1	69.2	7 194
Females	13.1	55.4	68.5	15.4	16.1	10.9	71.9	4 712
<i>Equity groups</i>								
Disability	14.2	51.3	65.5	20.5	14.0	9.8	69.2	9 195
Indigenous	n.p	n.p	n.p	n.p	n.p	n.p	51.1	368
CALD	14.0	48.3	62.3	19.8	17.9	n.p	66.1	1 162
Low English Proficiency	n.p	n.p	n.p	n.p	n.p	n.p	n.p	n.p
Low English Proficiency & CALD	n.p	n.p	n.p	n.p	n.p	n.p	n.p	n.p
Sole Parents	n.p	n.p	n.p	n.p	n.p	n.p	n.p	n.p
<i>Income support type</i>								
Newstart Allowance	6.5	55.2	61.7	23.5	14.8	8.2	65.5	2 294
Youth Allowance (other)	n.p	n.p	n.p	n.p	n.p	n.p	n.p	n.p
Disability Support Pension	7.8	56.3	64.1	22.5	13.4	9.5	67.9	4 650
Parenting Payment Single	n.p	n.p	n.p	n.p	n.p	n.p	n.p	n.p
Parenting Payment Partnered	n.p	n.p	n.p	n.p	n.p	n.p	n.p	n.p
TOTAL	17.3	49.5	66.8	20.1	13.1	9.9	70.4	11 906

Not provided (n.p.): Indicates that sufficient data was not available to produce a reliable estimate for the particular group of job seekers.

Reference period:

Job seekers who participated in employment assistance in the 10 months to December 2010 and outcomes measured around 3 months later.

Indigenous Employment Program

Table 4.1 - Employment related activities (Indigenous Employment Program)

	Employed full-time (%)	Employed Part-time (%)	Employed total (%)	Unemploy-ed (%)	Not in the Labour Force (%)	Education & training (%)	Positive Outcome (%)	In scope population (no.)
<i>Age Group (years)</i>								
15 to 20	58.8	13.5	72.3	n.p	n.p	42.4	78.3	1 974
21 to 24	n.p	n.p	67.7	n.p	n.p	24.6	72.4	1 029
25 to 34	38.0	21.5	59.5	n.p	n.p	15.2	63.0	1 528
35 to 49	44.8	28.8	73.6	n.p	n.p	19.2	78.5	1 463
50 or more	44.5	25.2	69.7	n.p	n.p	n.p	72.4	365
<i>Duration of unemployment</i>								
0 to less than 6	51.0	21.7	72.7	n.p	n.p	26.3	75.8	1 804
6 to less than 12	56.1	22.3	78.4	n.p	n.p	26.4	82.3	1 062
12 to less than 24	n.p	n.p	61.0	n.p	n.p	14.6	65.4	1 211
24 to less than 36	n.p	n.p	63.2	n.p	n.p	n.p	65.9	548
36 or more	47.1	16.2	63.3	n.p	n.p	25.8	71.3	1 193
<i>Educational attainment</i>								
Less than Year 10	28.9	23.0	51.9	n.p	n.p	15.9	58.3	1 052
Year 10 or 11	51.3	21.3	72.6	n.p	n.p	25.0	76.8	2 365
Year 12	n.p	n.p	73.4	n.p	n.p	24.4	76.2	841
University	n.p	n.p	77.1	n.p	n.p	n.p	80.2	221
Vocational	50.9	21.0	72.0	n.p	n.p	23.0	75.3	1 027
<i>Gender</i>								
Males	53.8	15.2	68.9	26.4	4.7	24.3	72.8	4 111
Females	45.9	26.8	72.6	n.p	n.p	28.9	77.8	2 248
<i>Equity groups</i>								
Disability	27.9	31.1	59.0	n.p	n.p	n.p	63.0	534
Sole Parents	n.p	n.p	70.5	n.p	n.p	n.p	75.8	443
<i>Income support type</i>								
Newstart Allowance	31.2	21.4	52.5	n.p	n.p	13.1	58.3	1 305
Youth Allowance (other)	n.p	n.p	59.9	n.p	n.p	n.p	59.9	389
Disability Support Pension	n.p	n.p	69.7	n.p	n.p	n.p	69.7	100
Parenting Payment Single	n.p	n.p	69.4	n.p	n.p	n.p	75.0	420
Parenting Payment Partnered	n.p	n.p	87.4	n.p	n.p	n.p	87.4	66
TOTAL	50.7	19.5	70.2	24.4	5.3	26.0	74.6	6 359

Not provided (n.p.): Indicates that sufficient data was not available to produce a reliable estimate for the particular group of job seekers.

Reference period:

Job seekers who participated in employment assistance in the 12 months to December 2010 and outcomes measured around 3 months later.

Table 4.2 - Non-employment related activities (Indigenous Employment Program)

	Employed full-time (%)	Employed Part-time (%)	Employed total (%)	Unemploy-ed (%)	Not in the Labour Force (%)	Education & training (%)	Positive Outcome (%)	In scope population (no.)
<i>Age Group (years)</i>								
15 to 20	25.1	20.2	45.3	43.7	11.0	39.7	65.0	2 492
21 to 24	n.p	n.p	45.1	n.p	n.p	28.8	59.5	1 258
25 to 34	31.0	20.4	51.4	n.p	n.p	28.7	61.8	1 716
35 to 49	25.8	24.5	50.3	n.p	n.p	15.4	57.6	1 575
50 or more	n.p	n.p	44.7	n.p	n.p	n.p	49.0	329
<i>Duration of unemployment</i>								
0 to less than 6	34.8	24.5	59.4	n.p	n.p	25.4	70.2	1 878
6 to less than 12	n.p	n.p	49.6	n.p	n.p	22.0	57.4	967
12 to less than 24	n.p	n.p	43.4	n.p	n.p	24.6	53.3	1 372
24 to less than 36	n.p	n.p	46.8	n.p	n.p	n.p	56.8	774
36 or more	18.8	22.7	41.5	n.p	n.p	21.2	51.2	1 685
<i>Educational attainment</i>								
Less than Year 10	21.7	20.1	41.8	n.p	n.p	17.3	50.6	1 427
Year 10 or 11	29.9	19.1	49.0	n.p	n.p	21.1	56.8	2 893
Year 12	n.p	n.p	49.1	n.p	n.p	29.3	61.9	852
University	n.p	n.p	n.p	n.p	n.p	n.p	n.p	n.p
Vocational	31.9	24.8	56.7	n.p	n.p	25.8	67.1	1 003
<i>Gender</i>								
Males	29.7	14.4	44.1	47.9	8.0	23.0	55.2	4 740
Females	24.7	29.6	54.3	36.2	9.6	33.5	68.2	2 630
<i>Equity groups</i>								
Disability	21.6	18.2	39.8	n.p	n.p	n.p	47.6	738
Sole Parents	n.p	n.p	44.0	n.p	n.p	35.6	65.9	610
<i>Income support type</i>								
Newstart Allowance	20.1	21.6	41.7	n.p	n.p	14.7	48.4	2 745
Youth Allowance (other)	n.p	n.p	31.3	n.p	n.p	23.3	48.4	1 123
Disability Support Pension	n.p	n.p	n.p	n.p	n.p	n.p	n.p	n.p
Parenting Payment Single	n.p	n.p	41.0	n.p	n.p	33.4	64.1	581
Parenting Payment Partnered	n.p	n.p	n.p	n.p	n.p	n.p	n.p	n.p
TOTAL	27.7	20.5	48.2	43.3	8.6	27.0	60.3	7 370

Not provided (n.p.): Indicates that sufficient data was not available to produce a reliable estimate for the particular group of job seekers.

Reference period:

Job seekers who exited from non-employment related activities in the 12 months to December 2010 and outcomes measured around 3 months later.

Job seekers' satisfaction

Table 5.1 Job seekers' satisfaction with assistance

	Av. Satisfaction Score (%) ²	Proportion Highly satisfied (%) ³
Year ending March 2011*		
Stream 1 (JSA)	13.3	47.9
Stream 2 (JSA)	14.6	58.4
Stream 3 (JSA)	14.6	59.6
Stream 4 (JSA)	14.5	58.0
Employment Assistance (DES)	13.5	52.5
Ongoing Support (DES)	14.9	63.2
Employment related activities (IEP)	14.5	61.0
Non-employment related activities (IEP)	12.3	32.6
Year ending December 2010**		
Stream 1 (JSA)	13.3	47.8
Stream 2 (JSA)	14.6	58.3
Stream 3 (JSA)	14.7	59.8
Stream 4 (JSA)	14.5	58.2
Employment Assistance (DES)	13.5	52.2
Ongoing Support (DES)	14.9	62.9
Employment related activities (IEP)	14.5	60.6
Non-employment related activities (IEP)	12.4	34.5

Reference periods:

*Job seekers who participated in employment assistance in the 12 months to December 2010 and satisfaction measured around 3 months later.

**Job seekers who participated in employment assistance in the 12 months to September 2010 and satisfaction measured around 3 months later.

² This score is on a scale of 0 to 20. A score for each job seeker's satisfaction is calculated from a range of questions focusing on the job seekers' satisfaction with key aspects of service and assistance. This data is collected from job seekers who have both exited assistance and those still participating in employment assistance.

³ A highly satisfied job seeker indicated that they are satisfied or very satisfied in regards to all of the aspects of service and assistance.

Outcomes and measures used in this report

Labour market outcomes

- **Employment:** An employment outcome is achieved when a job seeker indicates they are employed. The employment outcome rate is the employed job seekers as a proportion of all job seekers.
- **Employed part-time:** The part-time employment rate is the proportion of all job seekers working 34 or less hours per week.
- **Employed full-time:** The full-time employment rate is the proportion of all job seekers working 35 or more hours per week.
- **Unemployed:** A job seeker is considered unemployed when they are not employed but are currently seeking employment. The unemployed outcome rate is unemployed job seekers as a proportion of all job seekers.
- **Not in the Labour Force (NILF):** A job seeker is considered not in the labour force (NILF) when they are not working and are not currently looking for employment. The NILF outcome rate is NILF job seekers as a proportion of all job seekers.
- **Positive Outcome:** Recorded where a job seeker has achieved either an employment and/or education outcome. Positive outcomes are less than the sum of employment and education/training outcomes because some job seekers achieve both an employment and an education outcome. The positive outcome rate is a proportion of all job seekers.
- **Education/training:** An education/training outcome is achieved when a job seeker indicates they are training or studying. The education/training outcome rate is the job seekers who are studying as a proportion of all job seekers.

Employment outcomes

- **Permanent employees:** Proportion of employed job seekers working in permanent jobs where they receive paid sick and holiday leave.
- **Casual, temporary or seasonal employees:** Proportion of employed job seekers who identify their job as casual, seasonal or temporary.
- **Self employed:** Proportion of employed job seekers who are not employees but work for themselves.
- **Employed, seeking more work:** Proportion of employed job seekers who indicated that 'considering their current situation, they would like to work more hours' (includes both employees and self employed job seekers).
- **Full-time employed, seeking more work:** Proportion of employed job seekers who are working full-time and who indicated that 'considering their current situation, they would like to work more hours' (includes both employees and self employed job seekers).
- **Part-time employed, seeking more work:** Proportion of employed job seekers who are working part-time and who indicated that 'considering their current situation, they would like to work more hours' (includes both employees and self employed job seekers).
- **Employed and studying:** Proportion of employed job seekers who are both working and studying

Education outcomes

- **Studying at a diploma level or higher:** Proportion of studying job seekers who are studying to gain a diploma, advanced diploma, associate degree or degree level.
- **Studying at a year 10, 11 or 12 level:** Proportion of studying job seekers who are studying year 10, 11 or 12.
- **Studying at a certificate level:** Proportion of studying job seekers who are studying to gain a Certificate (I, II, III or IV).

Job seekers may be studying at an unspecified or 'other' level and so the sum of 'studying at Year 10, 11 or 12', 'Studying at certificate level' and 'Studying at diploma level or higher' will be less than 100%.

Job seekers' satisfaction

This data is collected both from job seekers who have exited assistance and those still participating in employment assistance. The responses to four key aspects of service and assistance (help suited to circumstances, consideration of individual needs, treated with respect and overall quality of service) are calculated to form a satisfaction score for each job seeker on a scale of 0 to 20. The possible responses to these questions are 'very satisfied', 'satisfied', 'neither satisfied or dissatisfied', 'dissatisfied' or 'very dissatisfied'.

- **Average satisfaction score:** This score is out of 20 and is the average score for all surveyed job seekers
- **Proportion highly satisfied:** The proportion of job seekers who answered satisfied or highly satisfied to all of the key aspects of service.

Other definitions used in this report

- **Duration of unemployment:** Job seekers are grouped according to the time (in months) that a job seeker was registered as unemployed when they commenced their period of employment assistance.
- **Educational attainment:** Job seekers are grouped according to the highest level of education attained. Post secondary education is further split into university and vocational education.
- **Income support types:** Job seekers are grouped according to the type of income support they were in receipt of when they commenced their period of employment assistance. The main income support types are Newstart, Youth Allowance (other), Parenting Payment Single, Parenting Payment Partnered and Disability Support Pension.

Equity groups: These groups are not mutually exclusive and a job seeker could be part of more than one group.

- **CALD:** Job seekers from a culturally and linguistically diverse background, as identified by their country of birth.
- **Sole parents:** Job seekers who either through their JSCI assessment or initial interview indicated that they are a sole parent or a recipient of Parent Payment Single when they commenced their period of assistance.
- **Low English skills:** Job seekers with low English language skills (speaking, reading & writing) when they commenced their period of employment assistance.
- **Labour market priority regions:** The Australian Government labour market priority regions are identified areas/regions likely to experience labour market disadvantage now or in the future. Job seekers who reside in any of these regions are included in the 'in a labour market priority region' group.
- **Not available (n.a.):** Indicates that the relevant data was not available to produce an estimate.
- **Not provided (n.p.):** Indicates that sufficient data was not available to produce a reliable estimate for the particular group of job seekers.

Reference period

Outcomes in this publication for programs and services other than DES relate to job seekers who participated in assistance between 1st January 2010 and 31st December 2010. For DES, outcomes relate to job seekers who participated in assistance between 1st March 2010 and 31st December 2010

Survey & technical information

Data sources

The two main data sources used to determine the outcomes achieved by job seekers during and after a period of labour market assistance are:

- The Post-Program Monitoring (PPM) survey; and
- The Department's administrative database held within the Employment Services System (ESS) accessed via the Consolidated Data Stores (CDS).

The PPM survey has been undertaken by the Department on an ongoing basis since 1987 and is used to determine the labour market and education status of program job seekers around three months after they become in-scope for having their outcomes measured. The ESS records details of commencements, job placements and paid outcomes from labour market assistance.

Survey Instruments

The PPM survey applies a mixed methodology approach to the collection of survey responses. An initial mail-based survey is sent to job seekers around eight weeks after they become in-scope (the trigger rules are set out below). If the job seeker does not respond to the initial mail-based survey within three weeks they will be sent a reminder mail-based survey. If after three weeks following they still have not responded then a telephone follow-up contact is attempted (over a two week period). Through this mixed communication medium, multiple attempts are made to collect a response from each surveyed job seeker.

Programs surveyed

The Labour Market Assistance Outcomes publication covers participation in Job Services, Australia, Indigenous Employment Program and Disability Employment Services. A number of questionnaires tailored to the job seekers' employment assistance are used. The various questionnaires are listed below

Table 1: Post-Program Monitoring Surveys

<i>Job Services Australia</i>	
Stream 1 (Limited)	Activity – Training in Job Search Techniques
Stream 1	Activity – Voluntary Work – Work Experience
Stream 2	Activity – Green Corps
Stream 3	Activity – Drought Force
Stream 4	Activity – Training
Job Placements	Activity – New Enterprise Incentive Scheme
Activity – Work for the Dole	Activity – Other
<i>Reformed Indigenous Employment Program</i>	
Cadetships	General
Apprenticeships/Traineeships	Wage Subsidy & Job placement
Pre-reformed IEP surveys - Wage Assistance	Pre-reformed IEP surveys - Structured Training and Employment Projects
<i>Disability Employment Services</i>	
Disability Employment Services – Employment Assistance	Disability Employment Services – Ongoing Support

Surveying Points

Job Services Australia

The PPM survey is primarily a post-exit survey, and an exit from a period of employment services will trigger a survey. Given the nature and design of Job Services Australia, however, additional survey trigger points are included to ensure accurate outcomes.

Depending on which Stream of assistance a job seeker is in, there are a series of set PPM survey points for those who remain in assistance. These scenarios are based on the assumption that the job seeker does not get assessed as being eligible for a higher level of Stream Services (and will trigger an exit from that prior Stream of assistance).

A job seeker who remains in Stream 1, 2 or 3, and does not exit Job Services Australia, will be in-scope for a PPM survey at the following points:

- Following the completion of their Intensive Activity placement (at around four-and-a-half months) with the initial survey to be sent out at around the six-and-a-half mark.
- Following the completion of their Initial Service Period (at around the 12 month point) with the initial survey to be sent out at around the 14 month mark.
- Following the completion of their Work Experience Activity within their first Work Experience Phase (at around the 18 month point) with the initial survey to be sent out at around the 20 month point.
- Following completion of their first Work Experience Phase (at around the 24 month point) with the initial survey to be sent out at around the 26 mark.
- Following the completion of their Work Experience Activity within their second Work Experience Phase (at around the 30 month point) with the initial survey to be sent out at around the 32 month point.
- Following completion of their second Work Experience Phase (at around the 36 month point) with the initial survey to be sent out at around the 38 month mark.

A job seeker who remains in Stream 4, and does not exit Job Services Australia, will be in-scope for a PPM survey at the following points:

- Following the completion of their Initial Service Period (at around the 12 (or 18 if their Initial Service Period was extended) month point) with the initial survey to be sent out at around the 14 (20) month mark.
- The following surveying points are under the assumption that the job seekers Initial Service Period was not extended by six months. If it was, then add six months to each time point.
- Following the completion of their Work Experience Activity within their first Work Experience Phase (at around the 18 month point) with the initial survey to be sent out at around the 20 month point.
- Following completion of their first Work Experience Phase (at around the 24 month point) with the initial survey to be sent out at around the 26 month mark.
- Following the completion of their Work Experience Activity within their second Work Experience Phase (at around the 30 month point) with the initial survey to be sent out at around the 32 month point.
- Following completion of their second Work Experience Phase (at around the 36 month point) with the initial survey to be sent out at around the 38 month mark.

A job seeker who is recorded within the Department's administrative data system as being placed into a job will also be in-scope for a PPM survey. Further, a job seeker who has been recorded as having left an activity based placement (e.g Work for the Dole, Green Corps) will also be in-scope for a PPM survey in relation to that activity, irrespective of whether that activity was part of a job seeker's Stream 1 Intensive Activity that occurred during the Initial Service Period, Work Experience activity or undertaken at a different point in assistance.

Reformed Indigenous Employment Program

A job seeker will be in-scope for Reformed Indigenous Employment Program (Cadetships) PPM survey if they:

- Exit a period of Reformed Indigenous Employment Program (Cadetships) where they will receive a survey three and 12 months after exiting and
- Reach 12 months in Reformed Indigenous Employment Program (Cadetships) without exiting
- Reach 24 months in Reformed Indigenous Employment Program (Cadetships) without exiting.

A job seeker will be recorded as being in-scope for Reformed Indigenous Employment Program (Apprenticeships/Traineeships) PPM survey if they:

- Exit a period of Reformed Indigenous Employment Program (Apprenticeships/Traineeships) and
- Reach 12 months in Reformed Indigenous Employment Program (Apprenticeships/Traineeships) without exiting.

A job seeker will be recorded as being in-scope for Reformed Indigenous Employment Program (Wage Subsidy or Job Placement) PPM survey if they:

- Exiting a period of Reformed Indigenous Employment Program (Wage Subsidy). If a job seeker has reached a point where they have reached 26 weeks after their commencement date then that date will be used as a proxy exit date if there is no exit date populated.

A job seeker will be recorded as being in-scope for Reformed Indigenous Employment Program (General) PPM survey if they:

- Exit a period of Reformed Indigenous Employment Program (General).

Disability Employment Services

A job seeker will be recorded as being in-scope for Disability Employment Services (DES) (Employment Assistance) PPM survey if they:

- Exit from DES (without progressing to Ongoing Support), including 26 week outcome and exit as a fully independent worker
- Reach 26 week outcome and continue to receive Ongoing Support
- Reach 12 months in DES assistance and not receiving ongoing support (unless the jobseeker has exited DES at the same time)

A job seeker will be recorded as being in-scope for Disability Employment Services (DES) (Ongoing Support) PPM survey if they:

- Exit from DES (and were in participating in the Ongoing Support phase)
- Reach 12 months in Ongoing Support (unless the jobseeker has exited DES at the same time)

For both 12 months triggers, if a job seeker transitioned from DEN or VRS into DES and had spent less than six months in DEN or VRS before transitioning, then the time in DEN and VRS is counted towards the 12 month clock, otherwise it is only the time spent in DES that is counted towards the determination of the 12 month survey trigger.

Sampling, populations and results

Job Services Australia - sampling

The PPM survey applies a stratified sampling approach to determining which job seekers in scope are surveyed. For Stream Services, Job Placements, Work for the Dole, Training in Job Search Techniques and non-Productivity Places Program training placements) the following sampling approach is used:

- 10% Full-rate Newstart Allowance or Youth Allowance (other) and non-Allowance Youth
- 10% not on income support or Part-rate Newstart Allowance or Youth Allowance (other)
- 50% on Disability Support Pension
- 25% on Parenting Payment
- 50% on other income support types.

For all other Work Experience activities a census approach is used.

Job Services Australia – in-scope population

Stream Services – job seekers are counted in the ‘in-scope population’ for Stream Services if, during the reference period, they exited from JSA assistance, or a phase of assistance (eg initial 12 month service period, Work Experience phase 1), or they received assistance in the reference period but had not exited by the end of it. Job seekers can potentially be counted in the ‘In-scope population’ more than once in the reference period (eg if they completed a phase and also exited JSA in the same reference period.) The in-scope population therefore differs to straight counts of participation or commencement in Stream Services that may be shown in other Departmental publications and reports.

Stream 1 Limited - job seekers are counted in the in-scope population for Stream 1 Limited if, during the reference period, they exited from a Stream 1 Limited placement. Job seekers can exit one or more times from Stream 1 Limited during the reference period.

Job Placement – job seekers are counted in the in-scope population for Job Placement if, during the reference period, they were placed in a job that was recorded in DEEWR administrative systems. Job seekers can have more than one job placement during the reference period.

Activities - job seekers are counted in the in-scope population for activities if, during the reference period, they exited from an activity placement. Job seekers can exit one or more times from the same or different activity type(s) during the reference period.

NEIS -job seekers are counted in the in-scope population for NEIS if, during the reference period, they exited from a NEIS placement.

Job Services Australia – results

Stream Services - the results presented in this report for Streams 1 to 4 are a combination of the outcomes of job seekers who exited from JSA assistance, or a phase of assistance (eg initial 12 month service period, Work Experience phase 1), or who received assistance in the reference period but had not exited by the end of it. Given that job seekers can remain in assistance for different periods of time, this approach ensures that results are representative of all job seekers who received assistance, and not just those who exited or participated for a certain time without exiting.

As an example, for the reporting of the Stream 2 outcomes in the December 2010 report, the outcomes of the following three groups of job seekers are used:

- those who exited assistance between 1 October 2009 and 30 September 2010
- those who reached 12 months of participation in the Initial Service Period or Work Experience Phase 1 between 1 October 2009 and 30 September 2010
- those who received assistance at some point between 1 October 2009 and 30 September 2010 but had

not exited by 30 September 2010

Activities, Stream 1 Limited, NEIS - results for activity based placements such as Work for the Dole and Green Corps, shorter term placements such as Stream 1 (Limited), and the NEIS program, are based on the outcomes of job seekers who exited in the reference period. This approach suits the nature of these types of assistance as they have discrete start and end points.

Job Placement results for Job Placement are based on the outcomes of job seekers who were placed in jobs in the reference period.

Reformed Indigenous Employment Program -sampling

For each of the different elements of the Reformed Indigenous Employment Program, the population is split into the same strata as are used for Job Services Australia, but a census is undertaken.

Reformed Indigenous Employment Program –in-scope population

Employment Related activities - job seekers are counted in the 'in-scope population' for Reformed IEP employment related activities if, during the reference period, they exited from a Reformed IEP employment related activity, or they reached 6 months participation in a Reformed IEP employment related activity. Job seekers can potentially be counted in the 'In-scope population' more than once in the reference period (eg if they reached 6 months participation in IEP and also exited IEP in the same reference period.) The in-scope population therefore differs to straight counts of participation or commencement in IEP that may be shown in other Departmental publications and reports.

Non-employment Related activities - job seekers are counted in the 'in-scope population' for Reformed IEP non-employment related activities if, during the reference period, they exited from a Reformed IEP non-employment related activity.

Reformed Indigenous Employment Program –results

Employment Related activities - the results presented in this report for Reformed IEP employment related activities are based on the outcomes of job seekers who exited from a Reformed IEP employment related activity, or reached 6 months participation in a Reformed IEP employment related activity.

Non-employment Related activities - the results presented in this report for Reformed IEP non-employment related activities are based on the outcomes of job seekers who exited from Reformed IEP non-employment related activities during the reference period.

Disability Employment Services - sampling

For both the Employment Assistance and Ongoing Support components of the Disability Employment Services, the population is split into the same strata as are used for Job Services Australia, with a one-in-three sample selection.

Disability Employment Services – in-scope population

Job seekers are counted in the 'in-scope population' for DES if, during the reference period, they exited from a DES placement, or they reached 12 months participation in a DES placement. Job seekers can potentially be counted in the 'In-scope population' more than once in the reference period (eg if they reached 12 months participation in DES and also exited DES in the same reference period.) The in-scope population therefore differs to straight counts of participation or commencement in DES that may be shown in other Departmental publications and reports.

Disability Employment Services - results

The results presented in this report for DES are a combination of the outcomes of job seekers who, in the reference period, exited from assistance or a phase of assistance and those job seekers who reached 12 months participation in the program.

Comparing results

Users should not attempt to directly compare the results reported for Job Services Australia assistance with Job Network and other complementary programs under the previous employment services contract. Different eligibility, access and labour market conditions are all factors that make comparisons problematic.

Program descriptions

Job Services Australia (JSA)

JSA: The Australian Government's national employment services system (commenced on 1 July 2009), providing opportunities for training, skills development, work experience and tailored assistance. It includes:

- Streams 1, 2, 3 and 4, including Work experience
- Harvest Labour Services

It also includes the other employment related services, which include NEIS Panel, Innovation Fund Panel, Employer Broker Panel and National Harvest Labour Information Service

Streams 1 – 4: The different streams reflect a job seekers' capacity for employment and work readiness. Stream1 consists of job seekers who are work ready, Stream2 consists of job seekers with moderate barriers to employment, Stream3 consists of job seekers with significant barriers to employment and Stream4 consists of job seekers with severe non-vocational barriers to employment.

New Enterprise Incentive Scheme (NEIS) is an Australian Government program providing a range of services to assist eligible unemployed people in establishing and running a small business.

Intensive activity within JSA is an activity undertaken by Stream1 job seekers which is designed to improve their ability to obtain and sustain employment. The activity must be of 60 hours over a fortnight for job seekers with full-time requirements at around the four month point in assistance.

Work experience phase within JSA is for job seekers who have completed approximately 12 months of services in Streams 1 to 4 will typically commence in the Work Experience Phase of their Stream following a Stream Services Review. In this Phase, Providers facilitate Work Experience Activities for job seekers which will enhance their chances of finding employment and provide ongoing assistance through regular contact with job seekers.

Activities that a job seeker may undertake as an intensive activity or in the Work Experience Phase (or at some other time) include:

- **Training** - on occasion provided through the Productivity Places Program (PPP)
- **Work for the Dole** - A JSA activity that provides assistance for job seekers to develop work habits, generic work skills and work experience by participating in community projects and activities.
- **Green Corps** - A JSA activity designed to provide job seekers with opportunities to develop personal skills while working in a team and generating positive outcomes for the environment and Australia's cultural heritage.
- **Drought Force** - A JSA activity designed to help job seekers gain skills and experience by providing assistance to individual farms and farming communities severely affected by drought.
- **Training in job search techniques** – A JSA activity that develops job search skills
- **Voluntary work/Work Experience** – Voluntary work provides job seekers with the opportunity to support their community through volunteering and through either voluntary work or work experience job seekers can experience a workplace and work environment.

Information on Job Services Australia is available at the Australian Government Department of Education Employment and Workplace Relations website (<http://www.deewr.gov.au/Employment/JSA>).

Disability Employment Services (DES)

DES: The Australian Government's national employment services system catering specifically to job seekers with disability. It is divided into two programs:

- Disability Management Service, for job seekers with disability, injury or health condition that are not expected to need long-term support in the workplace
- Employment Support Service, for job seekers with permanent disability and an assessed need for more long-term workplace support.

Employment assistance (DES): The initial period of DES assistance designed to assess the impact of the job seeker's disability, injury or health condition on the job seeker's capacity to find and maintain employment. Providers then focus on assisting the job seeker find sustainable employment by addressing vocational and non-vocational barriers and building the job seeker's capacity to work.

Ongoing support (DES): A phase of assistance in DES, where the DES provider has assessed that further support is required beyond the initial 26 weeks (since job placement) of support. If Ongoing Support is required for more than 26 weeks (from the 26 week outcome), then an independent Ongoing Support Assessment is required to determine what is the most appropriate support for the future. There are three types of Ongoing Support:

- Flexible Ongoing Support job seekers in Disability Management Service or Employment Support Service who require irregular or less predictable access to support to maintain employment
- Moderate and High Ongoing Support are only available to Employment Support Service job seekers and is determined by the job seeker's individual need and relative disadvantage.

Information on Disability Employment Services is available at the Australian Government Department of Education Employment and Workplace Relations website (<http://www.deewr.gov.au/Employment/Programs/DES>).

Reformed Indigenous Employment Program (IEP)

IEP: An Australian Government program administered by DEEWR which provides a range of tools to achieve employment and economic development for Indigenous Australians. A wide range of activities are included within Indigenous Employment Program tailored towards job seekers, employers or communities. The Reformed Indigenous Employment Program commenced on 1 July 2009 though some activities commenced before 1 July 2009 is still in operation.

IEP - Employment related activities: These activities have a strong job or employment focus, including cadetships, traineeships, apprenticeships and job placements.

IEP –Non employment related activities: These activities although part of employment assistance, do not necessarily have a strong job focus and often include training and development courses.

Information on Indigenous Employment Program is available at the Australian Government Department of Education Employment and Workplace Relations website (<http://www.deewr.gov.au/Indigenous/Employment/Programs/IEP>).