



Australian Government

# VET **Student** Loans



## Six-monthly report

1 January 2018 to 30 June 2018

## ISBN

978-1-76051-552-2 VSL Six-monthly report Jan – Jun 2018 [PDF]

978-1-76051-553-9 VSL Six-monthly report Jan – Jun 2018 [DOCX]

With the exception of the Commonwealth Coat of Arms, the Department's logo, any material protected by a trade mark and where otherwise noted all material presented in this document is provided under a Creative Commons Attribution 4.0 International (<http://creativecommons.org/licenses/by/4.0/au/>) licence.

The details of the relevant licence conditions are available on the Creative Commons website (accessible using the links provided) as is the full legal code for the CC BY 4.0 International (<http://creativecommons.org/licenses/by/4.0/legalcode>).

The document must be attributed as the VSL Six-monthly report Jan – Jun 2018.

## Introduction

This report is provided in accordance with section 103A of the *VET Student Loans Act 2016* (Act), which requires that:

*The Secretary must publish the following information within 42 days after the end of the period of 6 months beginning on 1 January and 1 July in each year (the reporting period):*

- a) the number of approved course providers who operated during the reporting period;*
- b) for each of those providers:*
  - i) the name of the provider; and*
  - ii) the value of VET student loans approved by the Secretary for approved courses offered by the provider during the reporting period; and*
  - iii) the number of students who undertook approved courses offered by the provider during the reporting period and whose tuition fees for the courses were paid (whether in whole or in part) using VET student loans; and*
  - iv) the number of such students who completed approved courses during the reporting period; and*
  - v) the amount of tuition fees charged to such students by the provider during the reporting period;*
- c) any other information in relation to VET student loans prescribed under the rules.*

This report covers the period from 1 January 2018 to 30 June 2018.

Consistent with section 103A, the report focuses on students whose tuition fees were paid (whether in whole or in part) using a VET Student Loan (VSL) within the reporting period. This report refers to these students as **VSL-assisted students**.

Information relating to students who have not accessed a VET Student Loan (or non-VSL-assisted students) is not included in this report.

## Background: The VET Student Loans program

The VET Student Loans program commenced on 1 January 2017, replacing the VET FEE-HELP scheme which closed to new students on 31 December 2016.

This delivered on the Government's commitment to redesign the VET income contingent loans program so that it is student centred, delivers high quality training, is fiscally sustainable, and holds providers to account. The new program focuses on program integrity, manages risk and promotes confidence in the regulated VET market by ensuring students are both academically suited to their course and are studying under a quality provider.

VET Student Loans offers income contingent loan support to eligible students studying approved Diploma level and above vocational education and training qualifications. Eligible students are entitled to access loans up to a capped amount of either \$5,075, \$10,150 or \$15,225<sup>1</sup> based on cost of delivery, though the Minister has the power to provide different (and higher) caps for particular courses (for example, aviation related courses).

The list of current VET Student Loans approved courses and maximum loan amount by course is available in the *VET Student Loans (Courses and Loan Caps) Determination 2016*<sup>2</sup>.

During the period from 1 January 2018 to 30 June 2018, 180 providers operated as approved course providers under the VET Student Loans program. This is up from the 144 providers that operated during the second half of 2017 (as detailed in the *VET Student Loans Six-monthly report 1 July 2017 to 31 December 2017*<sup>3</sup>).

---

<sup>1</sup> The legislation requires that these caps are indexed on an annual basis. The caps apply in 2018.

<sup>2</sup> <https://www.legislation.gov.au/Details/F2017C00493>

<sup>3</sup> <https://www.education.gov.au/vet-student-loans-statistics>

## Information required under section 103A of the *VET Student Loans Act 2016*

During the period 1 January 2018 to 30 June 2018 a total of 180 registered training organisations (RTOs) operated as approved course providers for VET Student Loans (section 103A(a)). Table 1 in the Appendix to this report sets out all of the information required by section 103A(b) for each provider.

In addition, this report sets out information and commentary on highlights for each of the matters specified in section 103A(b) for the six-month period, namely:

- approved course providers
- value of VET Student Loans paid
- VSL-assisted students
- completions
- tuition fees.

### Summary

<b>Operating providers</b>	<b>180</b>
<b>Students</b>	<b>43,294</b>
<b>Course enrolments</b>	<b>44,492</b>
<b>Loans</b>	<b>\$143,584,088</b>
<b>Course completions</b>	<b>1,453</b>
<b>Unit of study completion rate</b>	<b>74.4%</b>

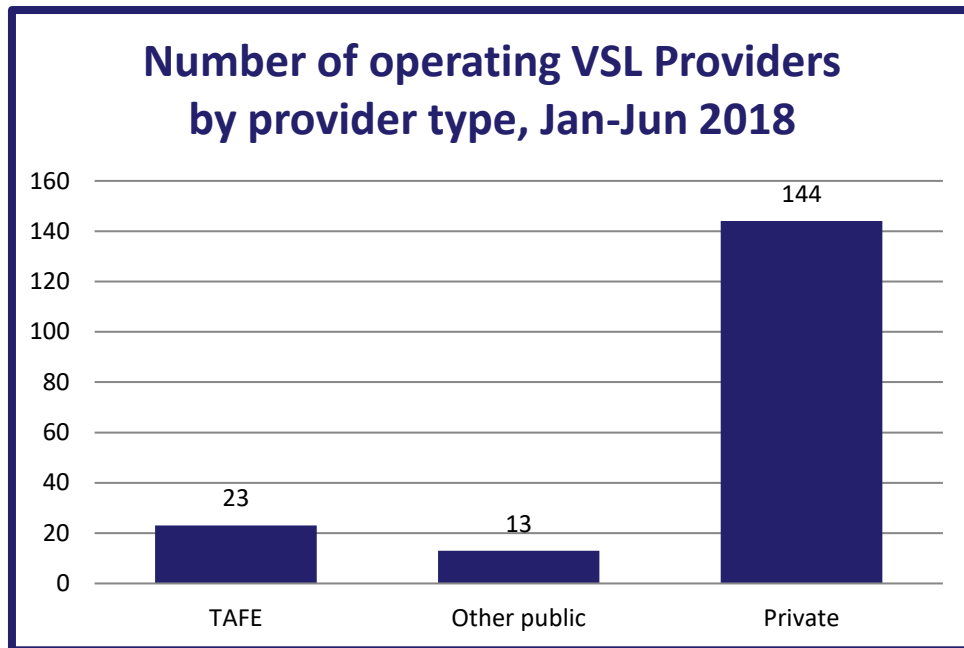
### Approved course providers (sections 103A(a) and (b)(i))

The 180 approved course providers comprised:

- 23 TAFEs
- 13 other public organisations (including Table A providers), and
- 144 private providers.

The numbers of providers in these different categories is shown in Figure 1.

**Figure 1: Approved course providers by type, 1 January 2018 to 30 June 2018**



The names of each of the 180 approved course providers that operated during the reporting period are provided in Table 1.

Of the 180 approved course providers that operated during the reporting period, 142 had students who accessed a VET Student Loan during that period.

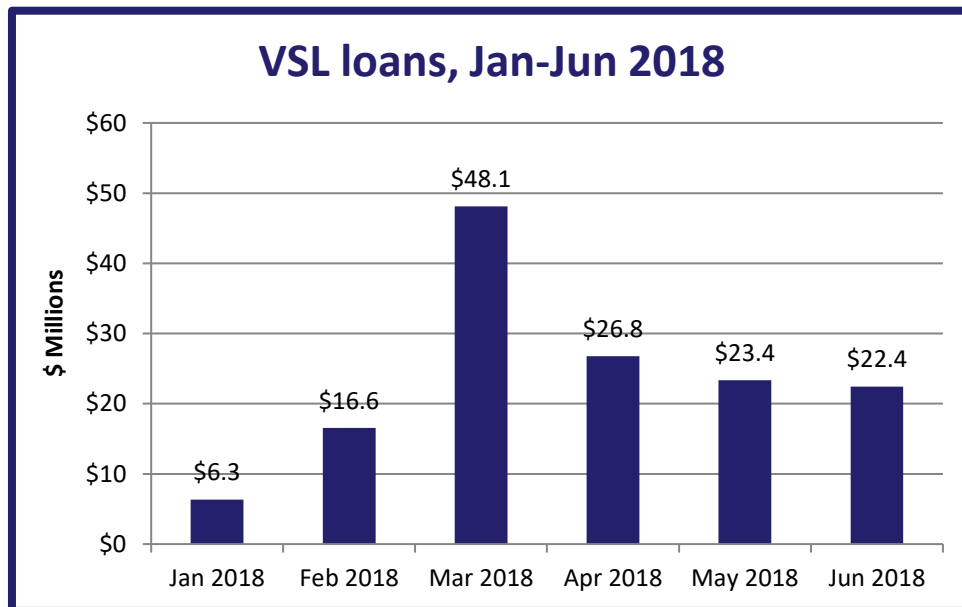
### **Value of VET Student Loans (section 103A(b)(ii))**

The amount paid to approved course providers in respect of VET Student Loans approved for students studying eligible courses, for the reporting period, was \$143,584,088. A breakdown by approved course provider is provided in Table 1.

Figure 2 shows the value of VET Student Loans paid for study undertaken during each month<sup>4</sup>.

<sup>4</sup> Study undertaken during each month is defined as a part of the course where the census day is in that month, regardless of when payment was made.

**Figure 2: Value of VET Student Loans paid for study undertaken in each month, 1 January 2018 to 30 June 2018**

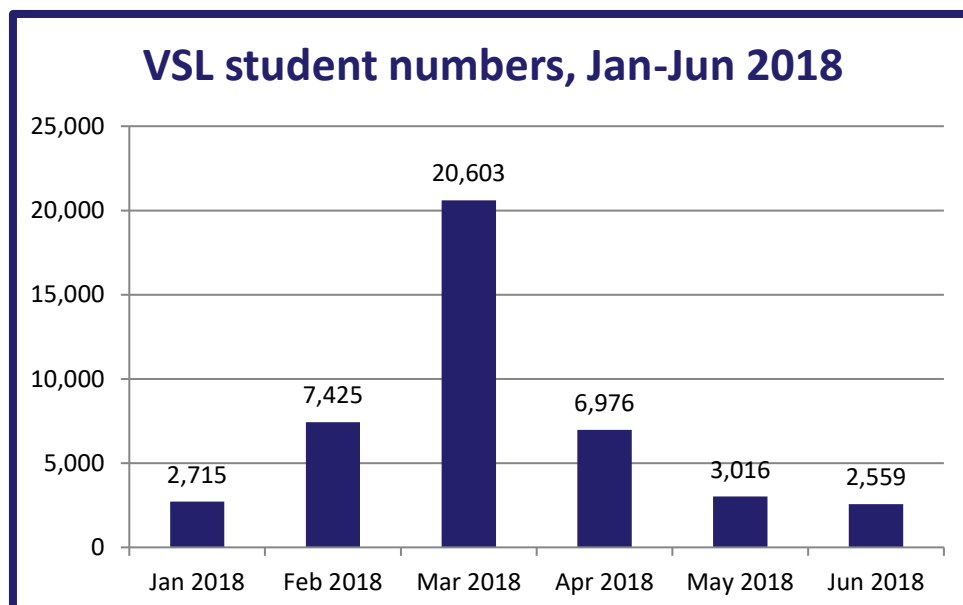


### **VSL-assisted students (section 103A(b)(iii))**

A total of 43,294 students undertook a part of a course with a census day during the reporting period, where the part of the course being studied was VSL-assisted (Table 1).

Figure 3 shows, by month, when these 43,294 students had their first part of the course that was VSL-assisted *in the reporting period*.

**Figure 3: VSL-assisted student numbers, first time VSL-assisted during the period 1 Jan 2018 to 30 Jun 2018**



Monthly student numbers peaked in March 2018, commensurate with the peak in VSL payments. It should be noted that some students may have had a VSL-assisted unit of study in more than one month. This would occur, for example, if they accessed a VET Student Loan for more than one part of a course, or for more than one course. These students are represented only the first time they accessed a VET Student Loan.

A breakdown of students by provider is shown in Table 1. However, the total of 43,294 only counts each student once, regardless of how many providers they were studying with.

## Completions (section 103A(b)(iv))

A relatively small number of students (1,453) are recorded as having completed a course based on data reported for the six months to 30 June 2018, as shown in Table 1. This is consistent with the pattern from 2017 of many more students completing at the end of the year than in the middle of the year. In addition to this, this report only covers students who have had a census day within the reporting period where the study was paid for with a VET Student Loan.

A course consists of a number of units of study (referred to as “parts of the course” in the *VET Student Loans Rules 2016*). Thus, reporting on unit of study completion rates provides an alternative way of presenting information on students’ progression through their courses, and these are included in Table 1.

The unit of study completion rate is the proportion of units of study that were *passed*, of the total *units of study undertaken*, with units of study measured in Equivalent Full Time Student Load (EFTSL) rather than student numbers. *Units of study undertaken* are units that providers have reported as being withdrawn from, failed or successfully completed, as well as units for which providers have failed to report a completion status.

The overall unit of study completion rate for VSL-assisted students is 74.4 per cent for study undertaken in the reporting period. This is commensurate with the unit of study completion rate of 75.2 per cent in the first half of 2017. A comparison with the 2017 full-year unit of study completion rate<sup>5</sup> of 82.4 per cent shows that the unit of study completion rate calculated at a later time and over the whole year is likely to be higher<sup>6</sup>.

Figure 4 shows a histogram of unit of study completion rates for the reporting period. Of the 142 VSL providers that had students who accessed a VET Student Loan in the reporting period, 17 (12 per cent) had a unit of study completion rate of zero, with 72 (51 per cent) having unit of study completion rates above 70 per cent. A unit of study completion rate could not be calculated for 12 providers (8 per cent) that reported all of their students’ units of study as being still in progress.

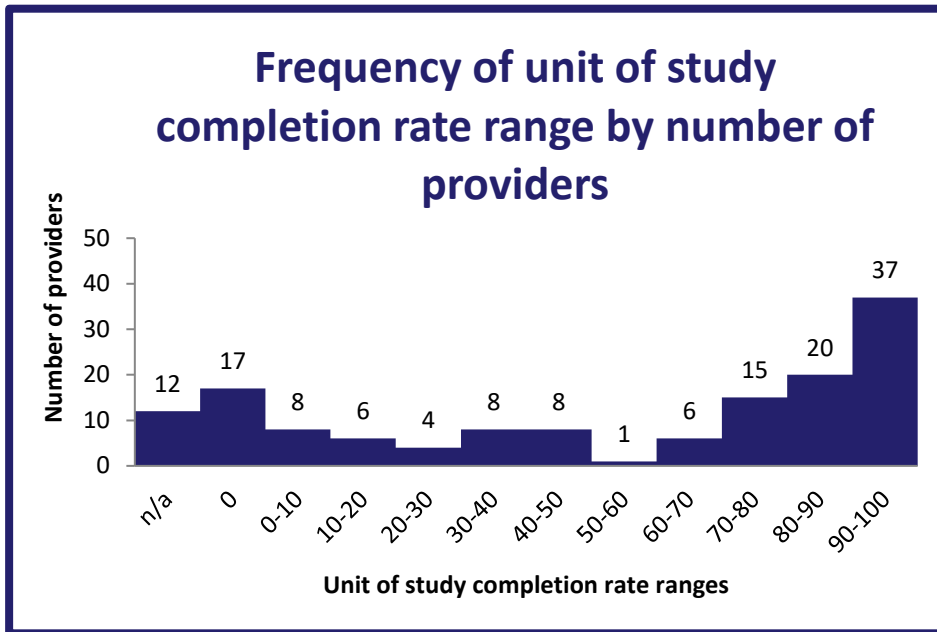
---

<sup>5</sup> As reported in the *VET Student Loans Annual Statistical Report 2017*

<sup>6</sup> Units reported as still in progress are excluded from the unit of study completion rate calculation. Providers report the final completion status of such units once completed (successfully or otherwise). A unit of study will generally include multiple units of competency (subjects). Unit of study completion rates therefore cannot be compared to subject load pass rates published by the National Centre for Vocational Education Research.



**Figure 4: Histogram of VSL-assisted student unit of study completion rates, 1 January 2018 to 30 June 2018**



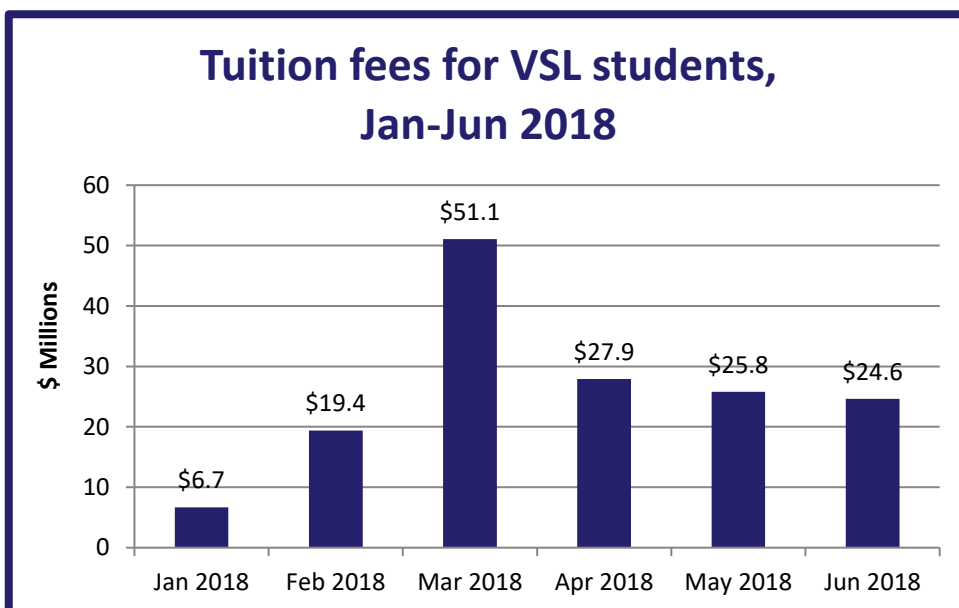
### Tuition fees (section 103A(b)(v))

During the reporting period, VSL-assisted students were charged a total of \$155,505,633 in course tuition fees. VSL-assisted students paid \$11,863,753 of their tuition fees up front in addition to the amounts paid in VET Student Loans.

Figure 5 provides a breakdown of tuition fees charged to VSL-assisted students in the reporting period, by month.

Tuition fees charged peaked in March 2018, commensurate with the peaks in value of loans paid for study undertaken and student numbers.

**Figure 5: Tuition fees charged to VSL-assisted students by month, 1 January 2018 to 30 June 2018**



## Additional VET student loan provider and course information

Tables 2 to 5 in the Appendix, and Table 6, an additional table provided as a separate Excel spreadsheet, provide additional information on approved course providers and the eligible courses they offered during the reporting period.

In particular, these tables rank providers in order of VSL-assisted students (Table 2), value of VET Student Loans paid (Table 3), and rank courses in order of VSL-assisted students (Table 4) and in order of value of VET Student Loans paid (Table 5).

These tables also provide the following:

- VSL-assisted student numbers (Table 2 and 3)
- course enrolment numbers<sup>7</sup> (Tables 4 and 5)
- Equivalent Full-Time Student Load (EFTSL) by provider and by course
- tuition fees charged
- the amount of the tuition fees paid up-front (paid directly to the provider by the student, rather than deferred through a VSL loan)
- the value of VSL loans
- tuition fees per student (Tables 2 and 3)
- tuition fees per course enrolment (Tables 4 and 5)
- tuition fees per EFTSL
- loan amount per student (Tables 2 and 3)
- loan amount per course enrolment (Tables 4 and 5)
- loan amount per EFTSL
- enrolments, loans, tuition fees, students completing courses and unit of study completion rates by provider and course (Table 6).

In terms of student numbers, all of the top ten providers were public providers (Table 2). This is the same 10 providers for the 2017 full year<sup>8</sup>, with a slight change in rankings.

Eight of the top 10 providers ranked by value of loans paid in Table 3 were public providers (TAFEs/Table A universities). Nine of the top 10 are the same providers as for the 2017 full year, with The Academy of Interactive Entertainment Ltd replacing TAFE SA in 10<sup>th</sup> position.

Nine of the top 10 courses, in terms of student numbers from 2017 remain in the top ten, with the Diploma of Music Industry dropping to 12<sup>th</sup> position and the Diploma of Sport Development moving up from 13<sup>th</sup> to 10<sup>th</sup> place. The Diploma of Nursing is the highest ranked course both in terms of course enrolments and value of loans paid, as shown in Tables 4 and 5, respectively.

---

<sup>7</sup> Students can enrol in more than one course, so enrolment numbers will always be greater than or equal to student numbers.

<sup>8</sup> As reported in the *VET Student Loans Annual Statistical Report 2017*

## Appendix: List of Tables

- **Table 1:** VET Student Loans information relating to operation of the VET Student Loans program for the period 1 January 2018 to 30 June 2018 - Section 103A of VET Student Loans Act 2016
- **Table 2:** VSL providers ordered by VSL-assisted student numbers for the period 1 January 2018 to 30 June 2018
- **Table 3:** VSL providers ordered by value of VSL loans paid for the period 1 January 2018 to 30 June 2018
- **Table 4:** VSL courses ordered by VSL-assisted enrolments for the period 1 January 2018 to 30 June 2018
- **Table 5:** VSL courses ordered by VSL loans paid for the period 1 January 2018 to 30 June 2018
- **Table 6:** VSL provider course details for the period 1 January 2018 to 30 June 2018 (separate table in excel spreadsheet)

**Table 1: VET Student Loans information relating to operation of the VET Student Loans program for the period 1 January 2018 to 30 June 2018 - Section 103A of VET Student Loans Act 2016**

	Provider ID	Provider name 103A (b)(i)	Provider Type	Students Undertaking Approved Courses 103A (b)(iii)	Loans paid 103A (b)(ii)	Tuition fees charged 103A (b)(v)	Students completing approved courses 103A (b)(iv)	Unit of study completion rate (%)
1	8067	Ablecare Pty Ltd	Private	0	\$0	\$0	0	n/a
2	7725	Aboriginal Centre for the Performing Arts Pty Ltd	Other Public	0	\$0	\$0	0	n/a
3	7583	Absorb Training Pty Ltd	Private	0	\$0	\$0	0	n/a
4	7124	Academy of Information Technology Pty Ltd	Private	102	\$240,570	\$371,622	0	28.5
5	8076	Academy of Makeup and Hair Pty Ltd	Private	19	\$58,060	\$75,830	0	66.1
6	4411	Acknowledge Education Pty Ltd	Private	0	\$0	\$0	0	n/a
7	7937	ACMUSE Australia Pty Ltd	Private	21	\$112,717	\$112,717	0	0.0
8	7407	Air Gold Coast Pty. Ltd.	Private	50	\$975,701	\$975,701	10	99.5
9	8095	AIRLINES OF TASMANIA PTY LTD	Private	18	\$491,080	\$491,080	0	94.8
10	4407	Alphacrucis College Limited	Private	37	\$147,701	\$147,701	23	100.0
11	7819	Atkinson Training and Development Pty Limited	Private	12	\$17,451	\$17,451	0	100.0
12	7701	Aurora Training Institute Pty Ltd	Private	35	\$92,231	\$92,231	<5	80.0
13	7541	Australasian Beauty Therapy Academy Pty Ltd	Private	62	\$287,700	\$287,700	31	100.0
14	7690	Australasian Lawrence Aged Care College Pty Ltd	Private	<5	\$5,075	\$8,166	0	n/a
15	7345	Australia Moreton Education Group Pty Ltd	Private	0	\$0	\$0	0	n/a
16	7108	Australian Academy of Vocational Education and Trades Pty Ltd	Private	7	\$20,355	\$20,355	<5	50.0
17	7092	Australian Careers Business College Pty Ltd	Private	135	\$410,588	\$689,703	0	71.2
18	3006	Australian Catholic University Limited	Private	349	\$1,089,192	\$1,098,791	0	0.0
19	7488	Australian Child Care Career Options (Accco) Pty Ltd	Private	9	\$13,420	\$14,220	0	70.6
20	7363	Australian College of Event Management Pty Ltd	Private	18	\$48,000	\$84,000	0	16.7
21	7756	Australian College of Fitness and Bodywork Pty Ltd	Private	66	\$161,662	\$169,200	<5	1.9

	Provider ID	Provider name 103A (b)(i)	Provider Type	Students Undertaking Approved Courses 103A (b)(iii)	Loans paid 103A (b)(ii)	Tuition fees charged 103A (b)(v)	Students completing approved courses 103A (b)(iv)	Unit of study completion rate (%)
22	7189	Australian College of Health & Fitness Pty Ltd	Private	91	\$301,684	\$301,684	0	n/a
23	7001	Australian College of the Arts Pty Ltd	Private	23	\$56,283	\$67,477	7	76.2
24	7012	Australian Education Group Pty Ltd	Private	119	\$666,666	\$1,452,000	8	93.8
25	7155	Australian Institute of Family Counselling Ltd	Private	231	\$572,544	\$572,544	0	64.0
26	7321	Australian Institute of Fashion Design Pty Ltd	Private	120	\$580,689	\$646,321	7	85.1
27	7685	Australian Institute of Higher and Further Education Pty Ltd	Private	7	\$25,040	\$25,040	0	60.0
28	7440	Australian International Skills Training Pty Ltd	Private	0	\$0	\$0	0	n/a
29	7163	Australian National Memorial Theatre Limited	Private	20	\$61,076	\$61,711	0	24.7
30	7229	Australian Nursing & Midwifery Federation (SA Branch)	Private	51	\$92,750	\$93,256	<5	2.5
31	7646	Australian Skills Group Pty Ltd	Private	8	\$40,000	\$40,000	<5	100.0
32	7143	Australian Wings Academy Pty Ltd	Private	43	\$936,816	\$1,000,119	5	99.2
33	7396	Australis College Pty Ltd	Private	520	\$1,524,533	\$1,525,034	13	27.6
34	7121	Aviation Australia PTY LTD	Other Public	6	\$96,427	\$96,427	0	77.8
35	2252	Avondale College Limited	Private	5	\$41,220	\$41,220	0	100.0
36	7009	Baptist Business College Ltd	Private	65	\$296,259	\$450,698	5	83.3
37	7254	Baptist Union of Western Australia	Private	0	\$0	\$0	0	n/a
38	7094	Basair Australia Pty Ltd	Private	169	\$3,831,880	\$3,888,690	32	76.8
39	2246	Batchelor Institute of Indigenous Tertiary Education	Other Public	0	\$0	\$0	0	n/a
40	7203	BCA National Training Group Pty Ltd	Private	537	\$1,800,318	\$2,030,570	10	14.3
41	7144	Benchmark Resources Pty Ltd	Private	0	\$0	\$0	0	n/a
42	7082	Bendigo Kangan Institute	TAFE	607	\$1,606,696	\$1,606,696	0	2.1
43	7724	Booroongen Djugun Limited	Private	0	\$0	\$0	0	n/a
44	4366	Box Hill Institute	TAFE	999	\$7,255,894	\$7,259,734	0	83.4
45	7810	BSI Learning Institute Pty Limited	Private	12	\$20,843	\$20,843	0	0.0
46	7518	C3 Church Sydney Ltd	Private	0	\$0	\$0	0	n/a
47	4406	Canberra Institute of Technology	TAFE	258	\$485,412	\$506,913	15	72.7
48	7037	Capital Education Group Ltd	Private	10	\$25,000	\$82,260	0	35.0
49	7666	Care Training Institute Pty Ltd	Private	0	\$0	\$0	0	n/a
50	7162	Casey College of Beauty Therapy Pty Ltd	Private	44	\$162,895	\$199,184	0	n/a
51	7629	Central Australian Institute of Technology Pty Ltd	Private	0	\$0	\$0	0	n/a
52	2200	Central Queensland University	Other Public	451	\$1,249,390	\$1,249,598	23	80.6
53	8073	Central Regional TAFE	TAFE	82	\$261,742	\$261,992	5	78.8
54	3001	Charles Darwin University	Other Public	47	\$86,284	\$86,729	0	33.7
55	7086	Charlton Brown Pty Ltd	Private	<5	\$5,810	\$5,810	0	0.0
56	7073	Chisholm Institute of Technical and Further Education	TAFE	1,517	\$3,538,238	\$3,573,880	106	14.0
57	7387	Cinimod Enterprises Pty Ltd	Private	97	\$627,000	\$627,000	0	0.0
58	7429	CMA Training Group Pty Ltd	Private	108	\$468,694	\$542,354	<5	98.4
59	7276	Contour Systems Pty Ltd	Private	14	\$65,412	\$65,412	0	0.0
60	7742	Demi International Beauty Academy Pty Ltd	Private	163	\$715,751	\$922,604	23	95.5

	Provider ID	Provider name 103A (b)(i)	Provider Type	Students Undertaking Approved Courses 103A (b)(iii)	Loans paid 103A (b)(ii)	Tuition fees charged 103A (b)(v)	Students completing approved courses 103A (b)(iv)	Unit of study completion rate (%)
61	7535	Department of Training and Workforce Development	TAFE	<5	\$10,254	\$10,254	<5	100.0
62	7347	Design Schools Australia Pty Ltd	Private	43	\$184,747	\$340,235	9	37.3
63	2235	Edith Cowan University	Other Public	180	\$983,792	\$984,126	0	97.6
64	7020	Ella Bache College Pty Ltd	Private	139	\$484,301	\$579,324	0	0.0
65	7159	Emma's Secret Investments Pty Ltd	Private	232	\$1,343,381	\$1,492,388	9	87.9
66	8034	Envirotech Education Pty Ltd	Private	45	\$79,525	\$79,525	0	4.8
67	7262	EQUALS International (Aust) Pty Ltd	Private	46	\$168,246	\$171,438	0	n/a
68	7068	Federation Training	TAFE	375	\$1,061,449	\$1,063,021	15	94.3
69	2154	Federation University Australia	Other Public	331	\$676,467	\$677,243	0	78.2
70	7870	Fit Education Pty Ltd	Private	0	\$0	\$0	0	n/a
71	7172	Flight Training Adelaide Pty Ltd	Private	94	\$2,198,295	\$2,327,164	36	93.7
72	7767	Forsythes Training Pty Limited	Private	0	\$0	\$0	0	n/a
73	7230	Foundation for Education & Training Ltd	Private	21	\$29,158	\$29,658	0	91.9
74	7566	Fox Endeavours Pty Ltd	Private	0	\$0	\$0	0	n/a
75	7103	Geelong Ethnic Communities Council Inc	Private	0	\$0	\$0	0	n/a
76	7729	Global Training Institute Pty Ltd	Private	6	\$26,586	\$26,586	0	n/a
77	4372	Gordon Institute of TAFE	TAFE	369	\$951,768	\$953,698	7	74.5
78	7145	Goulburn Ovens Institute of TAFE	TAFE	298	\$1,219,755	\$1,220,230	0	92.8
79	7225	H&H Accredited Training Australasia Inc	Private	0	\$0	\$0	0	n/a
80	7060	Hammond Institute Pty Ltd	Private	0	\$0	\$0	0	n/a
81	7651	HCR Constructions Pty Ltd	Private	<5	\$6,111	\$6,111	0	43.5
82	7050	Headmasters Academy Pty Ltd	Private	6	\$16,400	\$29,888	0	n/a
83	7306	Health Careers International Pty Ltd	Private	235	\$577,519	\$1,286,215	<5	47.4
84	7251	Health Skills Australia Pty Ltd	Private	442	\$2,412,643	\$3,887,017	0	17.5
85	7245	Holmes Commercial Colleges (Melbourne) Ltd	Private	<5	\$3,600	\$3,600	0	0.0
86	4383	Holmesglen Institute of TAFE	TAFE	1,147	\$3,091,670	\$3,111,326	10	86.9
87	7585	House of Learning Pty Ltd	Private	<5	\$13,393	\$16,188	0	n/a
88	7021	Iascend Polytechnic Pty Ltd	Private	0	\$0	\$0	0	n/a
89	7023	International Film School Sydney Pty Ltd	Private	117	\$666,633	\$666,633	0	0.0
90	7280	Job Training Institute Pty Ltd	Private	<5	\$4,805	\$4,805	0	n/a
91	7485	Just Careers Training Pty Ltd	Private	6	\$7,694	\$7,694	0	0.0
92	7661	Kiama Community College Incorporated	Private	7	\$12,150	\$12,150	0	0.0
93	7380	Kreate Pty Ltd	Private	55	\$80,823	\$80,823	<5	96.5
94	7325	LaTrobe International Galleries Pty. Ltd.	Private	34	\$148,044	\$191,625	<5	91.3
95	7473	LTT Group Pty Ltd	Private	14	\$49,200	\$49,200	<5	71.9
96	8104	MASTERS IN BUILDING TRAINING PTY LTD	Private	0	\$0	\$0	0	n/a
97	7235	Mater Education Limited	Private	307	\$1,369,768	\$1,862,704	51	88.1
98	7784	Media Make Up Academy & Agency Pty Ltd	Private	19	\$85,500	\$112,084	0	71.4
99	7590	Melbourne College of Hairdressing Beauty Therapy & Natural Medicine Pty Ltd	Private	29	\$92,882	\$92,882	0	20.7

	Provider ID	Provider name 103A (b)(i)	Provider Type	Students Undertaking Approved Courses 103A (b)(iii)	Loans paid 103A (b)(ii)	Tuition fees charged 103A (b)(v)	Students completing approved courses 103A (b)(iv)	Unit of study completion rate (%)
100	7524	Melbourne Institute of Nails & Beauty Pty Ltd	Private	0	\$0	\$0	0	n/a
101	4363	Melbourne Polytechnic	TAFE	945	\$3,143,626	\$3,166,205	5	7.4
102	7052	Melbourne Rudolf Steiner Seminar Ltd	Private	38	\$93,041	\$182,125	0	49.3
103	7135	Milneworth Pty Ltd	Private	10	\$36,000	\$39,056	0	n/a
104	7878	Milson College Pty Ltd	Private	0	\$0	\$0	0	n/a
105	8092	Monarch Institute Pty Ltd	Private	0	\$0	\$0	0	n/a
106	7944	Monash Student Association (Clayton) Inc	Private	0	\$0	\$0	0	n/a
107	7437	MVJ Enterprises Pty Ltd	Private	80	\$293,983	\$316,583	18	93.0
108	7905	N.S.E. RTO Pty Ltd	Private	0	\$0	\$0	0	n/a
109	4336	Navitas Professional Institute Pty Ltd	Private	200	\$715,682	\$1,027,083	39	81.9
110	7461	New England Institute of Technology Pty Ltd	Private	0	\$0	\$0	0	n/a
111	7900	New Horizons Learning Centres Holdings Pty Ltd	Private	0	\$0	\$0	0	n/a
112	7336	New York Film Academy Australia Pty Ltd	Private	190	\$1,055,719	\$1,055,719	52	90.8
113	7301	Niche Education Group Pty Ltd	Private	133	\$543,241	\$678,151	6	60.8
114	8071	North Metropolitan TAFE	TAFE	1,344	\$3,771,687	\$3,778,497	10	84.3
115	8060	North Regional TAFE	TAFE	17	\$50,162	\$50,162	<5	100.0
116	7122	PA & WJ Dow Pty Ltd	Private	10	\$175,675	\$175,675	0	46.8
117	7334	Performing Arts Education Pty Ltd	Private	0	\$0	\$0	0	n/a
118	7080	Pharmaceutical Society of Australia Limited	Private	<5	\$1,575	\$1,575	0	50.0
119	7427	Pragmatic Training Pty. Ltd.	Private	556	\$2,564,696	\$2,684,927	89	87.9
120	7197	Proteus Technologies Pty Ltd	Private	53	\$112,195	\$112,795	0	0.7
121	8100	Q ACADEMY PTY LTD	Private	129	\$543,464	\$652,527	16	5.6
122	7787	QIHE Pty Ltd	Private	44	\$182,091	\$182,091	0	100.0
123	7479	Queensland Agricultural Training Colleges	Other Public	11	\$17,764	\$17,764	0	0.0
124	7569	QUEENSLAND MASTER BUILDERS ASSOCIATION INDUSTRIAL ORGANISATION OF EMPLOYERS	Private	<5	\$8,950	\$8,950	0	n/a
125	7055	Relationships Australia South Australia Limited	Private	0	\$0	\$0	0	n/a
126	3034	Royal Melbourne Institute of Technology	Other Public	2,847	\$7,684,101	\$7,803,581	0	82.9
127	7278	Royal Victorian Aero Club	Private	19	\$364,405	\$364,405	6	95.0
128	4371	SAE Institute Pty Limited	Private	71	\$361,592	\$663,536	0	87.2
129	4397	Sarina Russo Schools Australia Pty Ltd	Private	86	\$111,650	\$111,650	0	68.7
130	7648	SCA Hair & Beauty Academy Pty Ltd	Private	20	\$95,000	\$95,000	0	33.3
131	7054	Scripture Union Queensland	Private	18	\$66,360	\$66,360	0	n/a
132	7570	SEDA Group Pty Ltd	Private	144	\$668,148	\$670,865	0	84.1
133	7700	Selmar Holdings Pty Ltd	Private	114	\$239,115	\$272,464	0	15.3
134	7378	Shakra Pty Ltd	Private	21	\$111,875	\$116,725	<5	100.0
135	7309	SMR Learning Services Pty Ltd	Private	509	\$1,361,124	\$1,386,125	17	79.8
136	4468	South Metropolitan TAFE	TAFE	583	\$2,039,428	\$2,047,923	90	83.3
137	8072	South Regional TAFE	TAFE	146	\$340,369	\$340,620	0	39.1
138	7142	South West Institute of TAFE	TAFE	207	\$438,537	\$438,866	<5	8.9

Provider ID	Provider name 103A (b)(i)	Provider Type	Students Undertaking Approved Courses 103A (b)(iii)	Loans paid 103A (b)(ii)	Tuition fees charged 103A (b)(v)	Students completing approved courses 103A (b)(iv)	Unit of study completion rate (%)	
139	7412	Southern Aviation Pty Ltd	Private	29	\$899,682	\$899,682	<5	100.0
140	7239	Southern Cross Education Institute Pty Ltd	Private	13	\$61,024	\$61,024	0	0.0
141	7454	Stanley International College Pty Ltd	Private	0	\$0	\$0	0	n/a
142	7833	Star Training Academy Pty Ltd	Private	<5	\$7,214	\$7,214	0	n/a
143	7382	Strategix Training Group Pty Ltd	Private	191	\$654,712	\$671,466	<5	34.0
144	7102	Sunraysia Institute of TAFE	TAFE	87	\$89,207	\$89,217	<5	94.0
145	2177	Swinburne University of Technology	Other Public	1,574	\$5,709,685	\$5,754,923	19	81.1
146	7041	Sydney Institute of Health Sciences Pty. Limited	Private	26	\$51,030	\$51,030	0	97.4
147	7371	Sydney Theatre Management Pty. Limited	Private	0	\$0	\$0	0	n/a
148	4450	TAFE Queensland	TAFE	7,059	\$24,756,973	\$26,036,590	465	82.4
149	7338	TAFE SA	TAFE	1,590	\$3,184,308	\$3,197,138	10	77.6
150	7826	Tandem College Pty Ltd	Private	237	\$819,309	\$819,309	<5	15.6
151	7460	TasTAFE	TAFE	341	\$585,087	\$585,157	0	95.0
152	7075	Technical and Further Education Commission of NSW	TAFE	8,056	\$16,002,814	\$16,296,080	15	94.9
153	7028	The Academy of Interactive Entertainment Ltd	Private	626	\$3,287,057	\$5,221,519	0	61.4
154	7157	The Australian Ballet School	Private	0	\$0	\$0	0	n/a
155	7428	The Creche and Kindergarten Association Limited	Private	0	\$0	\$0	0	n/a
156	7329	The French Beauty Academy Pty Ltd	Private	178	\$1,416,065	\$1,438,017	47	87.9
157	7091	The Health Arts College Pty Ltd	Private	97	\$378,300	\$378,300	0	0.0
158	7390	The Holistic Healing Company Pty Limited	Private	0	\$0	\$0	0	n/a
159	7261	The International Golf Institute Pty Ltd	Private	<5	\$1,250	\$1,250	0	0.0
160	7697	The Lady Gowrie Child Centre Melbourne Inc	Private	19	\$42,134	\$42,134	0	100.0
161	7056	The Malka Group Pty. Ltd.	Private	11	\$27,041	\$27,041	<5	100.0
162	7465	The Mask Academy Pty Ltd	Private	55	\$140,833	\$140,833	0	0.0
163	2148	The National Institute of Dramatic Art	Other Public	43	\$176,500	\$297,500	8	95.8
164	7273	The Quality Training and Hospitality College Pty Ltd	Private	0	\$0	\$0	0	n/a
165	7683	The Redcliffe Aero Club	Private	<5	\$103,383	\$114,364	<5	49.2
166	3044	The University of Notre Dame Australia	Private	13	\$47,581	\$47,581	<5	100.0
167	4375	Think: Colleges Pty Ltd	Private	381	\$1,577,318	\$2,548,240	7	0.0
168	4449	Torrens University Australia Limited	Private	0	\$0	\$0	0	n/a
169	7131	Transformations - Pathways to Competence & Developing Excellence Pty Ltd	Private	161	\$397,396	\$397,876	<5	86.4
170	7372	Unity College Australia Incorporated	Private	110	\$269,249	\$269,249	0	33.3
171	3019	University of Queensland	Other Public	8	\$51,400	\$51,400	0	100.0
172	4377	UOWC Ltd	Private	122	\$575,212	\$834,847	<5	78.7
173	3007	Victoria University	Other Public	1,141	\$3,478,043	\$3,481,337	29	83.6
174	7349	Victorian Fitness Academy Pty Ltd	Private	225	\$997,638	\$1,000,138	0	47.4
175	7478	Virtu Design Institute Pty Limited	Private	14	\$45,054	\$45,054	0	100.0
176	4394	William Angliss Institute of TAFE	TAFE	122	\$309,904	\$314,302	<5	67.6
177	8103	WILSON HEALTH PTY LTD	Private	6	\$33,200	\$33,200	0	40.0

	Provider ID	Provider name 103A (b)(i)	Provider Type	Students Undertaking Approved Courses 103A (b)(iii)	Loans paid 103A (b)(ii)	Tuition fees charged 103A (b)(v)	Students completing approved courses 103A (b)(iv)	Unit of study completion rate (%)
178	7118	Wodonga Institute of TAFE	TAFE	187	\$371,571	\$372,113	<5	85.4
179	7110	Workers Educational Association - Hunter	Private	0	\$0	\$0	0	n/a
180	7032	YourLife Health and Learning Inc	Private	90	\$118,349	\$136,400	0	100.0
		<b>Total:</b>		<b>43,294</b>	<b>\$143,584,088</b>	<b>\$155,505,633</b>	<b>1,453</b>	<b>74.4</b>



**Table 2: VSL providers ordered by VSL-assisted student numbers for the period 1 January 2018 to 30 June 2018**

Rank	Provider ID	Provider name	Students	EFTSL	Tuition fees	Paid upfront	Loans paid	Tuition fees per student	Tuition fees per EFTSL	Loans per student	Loans per EFTSL
1	7075	Technical and Further Education Commission of NSW	8,056	3,722.4	\$16,296,080	\$293,266	\$16,002,814	\$2,023	\$4,378	\$1,986	\$4,299
2	4450	TAFE Queensland	7,059	2,369.8	\$26,036,590	\$1,279,393	\$24,756,973	\$3,688	\$10,987	\$3,507	\$10,447
3	3034	Royal Melbourne Institute of Technology	2,847	1,218.1	\$7,803,581	\$119,480	\$7,684,101	\$2,741	\$6,407	\$2,699	\$6,308
4	7338	TAFE SA	1,590	441.7	\$3,197,138	\$12,831	\$3,184,308	\$2,011	\$7,238	\$2,003	\$7,209
5	2177	Swinburne University of Technology	1,574	709.1	\$5,754,923	\$45,239	\$5,709,685	\$3,656	\$8,116	\$3,628	\$8,053
6	7073	Chisholm Institute of Technical and Further Education	1,517	449.7	\$3,573,880	\$35,642	\$3,538,238	\$2,356	\$7,948	\$2,332	\$7,869
7	8071	North Metropolitan TAFE	1,344	801.5	\$3,778,497	\$6,810	\$3,771,687	\$2,811	\$4,714	\$2,806	\$4,706
8	4383	Holmesglen Institute of TAFE	1,147	731.2	\$3,111,326	\$19,656	\$3,091,670	\$2,713	\$4,255	\$2,695	\$4,228
9	3007	Victoria University	1,141	422.8	\$3,481,337	\$3,294	\$3,478,043	\$3,051	\$8,234	\$3,048	\$8,227
10	4366	Box Hill Institute	999	560.9	\$7,259,734	\$3,840	\$7,255,894	\$7,267	\$12,942	\$7,263	\$12,935
11	4363	Melbourne Polytechnic	945	501.2	\$3,166,205	\$22,579	\$3,143,626	\$3,350	\$6,317	\$3,327	\$6,272
12	7028	The Academy of Interactive Entertainment Ltd	626	345.0	\$5,221,519	\$1,934,462	\$3,287,057	\$8,341	\$15,136	\$5,251	\$9,528
13	7082	Bendigo Kangan Institute	607	265.8	\$1,606,696	\$0	\$1,606,696	\$2,647	\$6,044	\$2,647	\$6,044
14	4468	South Metropolitan TAFE	583	254.3	\$2,047,923	\$8,495	\$2,039,428	\$3,513	\$8,052	\$3,498	\$8,019
15	7427	Pragmatic Training Pty. Ltd.	556	259.5	\$2,684,927	\$120,231	\$2,564,696	\$4,829	\$10,348	\$4,613	\$9,884
16	7203	BCA National Training Group Pty Ltd	537	195.8	\$2,030,570	\$230,252	\$1,800,318	\$3,781	\$10,369	\$3,353	\$9,194
17	7396	Australis College Pty Ltd	520	240.4	\$1,525,034	\$501	\$1,524,533	\$2,933	\$6,343	\$2,932	\$6,341
18	7309	SMR Learning Services Pty Ltd	509	165.0	\$1,386,125	\$25,001	\$1,361,124	\$2,723	\$8,401	\$2,674	\$8,249
19	2200	Central Queensland University	451	191.3	\$1,249,598	\$208	\$1,249,390	\$2,771	\$6,531	\$2,770	\$6,530
20	7251	Health Skills Australia Pty Ltd	442	225.9	\$3,887,017	\$1,473,963	\$2,412,643	\$8,794	\$17,205	\$5,458	\$10,679
21	4375	Think: Colleges Pty Ltd	381	153.8	\$2,548,240	\$970,922	\$1,577,318	\$6,688	\$16,567	\$4,140	\$10,255
22	7068	Federation Training	375	236.7	\$1,063,021	\$1,571	\$1,061,449	\$2,835	\$4,491	\$2,831	\$4,484
23	4372	Gordon Institute of TAFE	369	247.7	\$953,698	\$1,930	\$951,768	\$2,585	\$3,850	\$2,579	\$3,842
24	3006	Australian Catholic University Limited	349	162.0	\$1,098,791	\$9,598	\$1,089,192	\$3,148	\$6,785	\$3,121	\$6,725
25	7460	TasTAFE	341	160.3	\$585,157	\$70	\$585,087	\$1,716	\$3,650	\$1,716	\$3,650
26	2154	Federation University Australia	331	78.1	\$677,243	\$776	\$676,467	\$2,046	\$8,673	\$2,044	\$8,663
27	7235	Mater Education Limited	307	136.3	\$1,862,704	\$492,936	\$1,369,768	\$6,067	\$13,671	\$4,462	\$10,053
28	7145	Goulburn Ovens Institute of TAFE	298	92.2	\$1,220,230	\$475	\$1,219,755	\$4,095	\$13,233	\$4,093	\$13,227
29	4406	Canberra Institute of Technology	258	119.4	\$506,913	\$21,501	\$485,412	\$1,965	\$4,247	\$1,881	\$4,067
30	7826	Tandem College Pty Ltd	237	93.4	\$819,309	\$0	\$819,309	\$3,457	\$8,773	\$3,457	\$8,773
31	7306	Health Careers International Pty Ltd	235	112.8	\$1,286,215	\$708,696	\$577,519	\$5,473	\$11,401	\$2,458	\$5,119
32	7159	Emma's Secret Investments Pty Ltd	232	181.4	\$1,492,388	\$149,006	\$1,343,381	\$6,433	\$8,228	\$5,790	\$7,407
33	7155	Australian Institute of Family Counselling Ltd	231	55.1	\$572,544	\$0	\$572,544	\$2,479	\$10,399	\$2,479	\$10,399
34	7349	Victorian Fitness Academy Pty Ltd	225	101.3	\$1,000,138	\$2,500	\$997,638	\$4,445	\$9,878	\$4,434	\$9,853
35	7142	South West Institute of TAFE	207	66.3	\$438,866	\$329	\$438,537	\$2,120	\$6,624	\$2,119	\$6,619
36	4336	Navitas Professional Institute Pty Ltd	200	70.5	\$1,027,083	\$311,401	\$715,682	\$5,135	\$14,569	\$3,578	\$10,152
37	7382	Strategix Training Group Pty Ltd	191	76.3	\$671,466	\$16,753	\$654,712	\$3,516	\$8,804	\$3,428	\$8,584

Rank	Provider ID	Provider name	Students	EFTSL	Tuition fees	Paid upfront	Loans paid	Tuition fees per student	Tuition fees per EFTSL	Loans per student	Loans per EFTSL
38	7336	New York Film Academy Australia Pty Ltd	190	104.3	\$1,055,719	\$0	\$1,055,719	\$5,556	\$10,122	\$5,556	\$10,122
39	7118	Wodonga Institute of TAFE	187	71.8	\$372,113	\$543	\$371,571	\$1,990	\$5,184	\$1,987	\$5,176
40	2235	Edith Cowan University	180	150.0	\$984,126	\$334	\$983,792	\$5,467	\$6,559	\$5,466	\$6,557
41	7329	The French Beauty Academy Pty Ltd	178	142.4	\$1,438,017	\$21,952	\$1,416,065	\$8,079	\$10,096	\$7,955	\$9,942
42	7094	Basair Australia Pty Ltd	169	60.9	\$3,888,690	\$17,363	\$3,831,880	\$23,010	\$63,853	\$22,674	\$62,920
43	7742	Demi International Beauty Academy Pty Ltd	163	73.3	\$922,604	\$206,853	\$715,751	\$5,660	\$12,595	\$4,391	\$9,771
44	7131	Transformations - Pathways to Competence & Developing Excellence Pty Ltd	161	63.8	\$397,876	\$480	\$397,396	\$2,471	\$6,235	\$2,468	\$6,228
45	8072	South Regional TAFE	146	58.8	\$340,620	\$251	\$340,369	\$2,333	\$5,795	\$2,331	\$5,791
46	7570	SEDA Group Pty Ltd	144	61.1	\$670,865	\$2,717	\$668,148	\$4,659	\$10,981	\$4,640	\$10,936
47	7020	Ella Bache College Pty Ltd	139	52.0	\$579,324	\$95,023	\$484,301	\$4,168	\$11,133	\$3,484	\$9,307
48	7092	Australian Careers Business College Pty Ltd	135	62.9	\$689,703	\$279,115	\$410,588	\$5,109	\$10,967	\$3,041	\$6,529
49	7301	Niche Education Group Pty Ltd	133	54.6	\$678,151	\$134,909	\$543,241	\$5,099	\$12,416	\$4,085	\$9,946
50	8100	Q ACADEMY PTY LTD	129	51.3	\$652,527	\$109,062	\$543,464	\$5,058	\$12,725	\$4,213	\$10,598
51	4377	UOWC Ltd	122	60.7	\$834,847	\$259,635	\$575,212	\$6,843	\$13,761	\$4,715	\$9,482
52	4394	William Angliss Institute of TAFE	122	46.5	\$314,302	\$4,398	\$309,904	\$2,576	\$6,755	\$2,540	\$6,661
53	7321	Australian Institute of Fashion Design Pty Ltd	120	57.3	\$646,321	\$65,632	\$580,689	\$5,386	\$11,285	\$4,839	\$10,139
54	7012	Australian Education Group Pty Ltd	119	66.7	\$1,452,000	\$785,334	\$666,666	\$12,202	\$21,782	\$5,602	\$10,001
55	7023	International Film School Sydney Pty Ltd	117	100.0	\$666,633	\$0	\$666,633	\$5,698	\$6,666	\$5,698	\$6,666
56	7700	Selmar Holdings Pty Ltd	114	53.9	\$272,464	\$33,349	\$239,115	\$2,390	\$5,052	\$2,098	\$4,434
57	7372	Unity College Australia Incorporated	110	48.6	\$269,249	\$0	\$269,249	\$2,448	\$5,540	\$2,448	\$5,540
58	7429	CMA Training Group Pty Ltd	108	54.5	\$542,354	\$73,660	\$468,694	\$5,022	\$9,948	\$4,340	\$8,597
59	7124	Academy of Information Technology Pty Ltd	102	27.1	\$371,622	\$131,053	\$240,570	\$3,643	\$13,723	\$2,359	\$8,883
60	7387	Cinimod Enterprises Pty Ltd	97	62.4	\$627,000	\$0	\$627,000	\$6,464	\$10,053	\$6,464	\$10,053
61	7091	The Health Arts College Pty Ltd	97	34.9	\$378,300	\$0	\$378,300	\$3,900	\$10,833	\$3,900	\$10,833
62	7172	Flight Training Adelaide Pty Ltd	94	52.0	\$2,327,164	\$122,284	\$2,198,295	\$24,757	\$44,727	\$23,386	\$42,251
63	7189	Australian College of Health & Fitness Pty Ltd	91	33.7	\$301,684	\$0	\$301,684	\$3,315	\$8,958	\$3,315	\$8,958
64	7032	YourLife Health and Learning Inc	90	21.3	\$136,400	\$18,052	\$118,349	\$1,516	\$6,416	\$1,315	\$5,566
65	7102	Sunraysia Institute of TAFE	87	27.1	\$89,217	\$10	\$89,207	\$1,025	\$3,288	\$1,025	\$3,288
66	4397	Sarina Russo Schools Australia Pty Ltd	86	19.4	\$111,650	\$0	\$111,650	\$1,298	\$5,758	\$1,298	\$5,758
67	8073	Central Regional TAFE	82	48.3	\$261,992	\$250	\$261,742	\$3,195	\$5,426	\$3,192	\$5,421
68	7437	MVJ Enterprises Pty Ltd	80	29.3	\$316,583	\$22,600	\$293,983	\$3,957	\$10,823	\$3,675	\$10,051
69	4371	SAE Institute Pty Limited	71	35.6	\$663,536	\$301,944	\$361,592	\$9,346	\$18,633	\$5,093	\$10,154
70	7756	Australian College of Fitness and Bodywork Pty Ltd	66	23.9	\$169,200	\$7,538	\$161,662	\$2,564	\$7,072	\$2,449	\$6,757
71	7009	Baptist Business College Ltd	65	37.9	\$450,698	\$154,440	\$296,259	\$6,934	\$11,900	\$4,558	\$7,822
72	7541	Australasian Beauty Therapy Academy Pty Ltd	62	30.6	\$287,700	\$0	\$287,700	\$4,640	\$9,414	\$4,640	\$9,414
73	7380	Kreate Pty Ltd	55	14.0	\$80,823	\$0	\$80,823	\$1,470	\$5,794	\$1,470	\$5,794
74	7465	The Mask Academy Pty Ltd	55	13.8	\$140,833	\$0	\$140,833	\$2,561	\$10,181	\$2,561	\$10,181
75	7197	Proteus Technologies Pty Ltd	53	23.1	\$112,795	\$600	\$112,195	\$2,128	\$4,874	\$2,117	\$4,849
76	7229	Australian Nursing & Midwifery Federation (SA Branch)	51	19.6	\$93,256	\$505	\$92,750	\$1,829	\$4,749	\$1,819	\$4,723
77	7407	Air Gold Coast Pty. Ltd.	50	17.7	\$975,701	\$0	\$975,701	\$19,514	\$55,218	\$19,514	\$55,218
78	3001	Charles Darwin University	47	17.5	\$86,729	\$445	\$86,284	\$1,845	\$4,964	\$1,836	\$4,939

Rank	Provider ID	Provider name	Students	EFTSL	Tuition fees	Paid upfront	Loans paid	Tuition fees per student	Tuition fees per EFTSL	Loans per student	Loans per EFTSL
79	7262	EQUALS International (Aust) Pty Ltd	46	15.7	\$171,438	\$3,192	\$168,246	\$3,727	\$10,939	\$3,658	\$10,736
80	8034	Envirotech Education Pty Ltd	45	15.5	\$79,525	\$0	\$79,525	\$1,767	\$5,114	\$1,767	\$5,114
81	7787	QIHE Pty Ltd	44	22.3	\$182,091	\$0	\$182,091	\$4,138	\$8,182	\$4,138	\$8,182
82	7162	Casey College of Beauty Therapy Pty Ltd	44	16.1	\$199,184	\$36,288	\$162,895	\$4,527	\$12,355	\$3,702	\$10,104
83	7347	Design Schools Australia Pty Ltd	43	24.4	\$340,235	\$155,488	\$184,747	\$7,912	\$13,928	\$4,296	\$7,563
84	2148	The National Institute of Dramatic Art	43	19.1	\$297,500	\$121,000	\$176,500	\$6,919	\$15,543	\$4,105	\$9,222
85	7143	Australian Wings Academy Pty Ltd	43	16.8	\$1,000,119	\$63,161	\$936,816	\$23,259	\$59,513	\$21,786	\$55,746
86	7052	Melbourne Rudolf Steiner Seminar Ltd	38	18.3	\$182,125	\$89,084	\$93,041	\$4,793	\$9,979	\$2,448	\$5,098
87	4407	Alphacrucis College Limited	37	3.5	\$147,701	\$0	\$147,701	\$3,992	\$42,200	\$3,992	\$42,200
88	7701	Aurora Training Institute Pty Ltd	35	15.8	\$92,231	\$0	\$92,231	\$2,635	\$5,823	\$2,635	\$5,823
89	7325	LaTrobe International Galleries Pty. Ltd.	34	14.6	\$191,625	\$43,581	\$148,044	\$5,636	\$13,118	\$4,354	\$10,135
90	7412	Southern Aviation Pty Ltd	29	12.6	\$899,682	\$0	\$899,682	\$31,024	\$71,318	\$31,024	\$71,318
91	7590	Melbourne College of Hairdressing Beauty Therapy & Natural Medicine Pty Ltd	29	12.3	\$92,882	\$0	\$92,882	\$3,203	\$7,524	\$3,203	\$7,524
92	7041	Sydney Institute of Health Sciences Pty. Limited	26	6.3	\$51,030	\$0	\$51,030	\$1,963	\$8,061	\$1,963	\$8,061
93	7001	Australian College of the Arts Pty Ltd	23	5.8	\$67,477	\$11,194	\$56,283	\$2,934	\$11,735	\$2,447	\$9,788
94	7378	Shakra Pty Ltd	21	11.5	\$116,725	\$4,850	\$111,875	\$5,558	\$10,177	\$5,327	\$9,754
95	7937	ACMUSE Australia Pty Ltd	21	11.1	\$112,717	\$0	\$112,717	\$5,368	\$10,150	\$5,368	\$10,150
96	7230	Foundation for Education & Training Ltd	21	6.4	\$29,658	\$500	\$29,158	\$1,412	\$4,607	\$1,388	\$4,529
97	7648	SCA Hair & Beauty Academy Pty Ltd	20	9.5	\$95,000	\$0	\$95,000	\$4,750	\$10,000	\$4,750	\$10,000
98	7163	Australian National Memorial Theatre Limited	20	7.8	\$61,711	\$635	\$61,076	\$3,086	\$7,940	\$3,054	\$7,858
99	7278	Royal Victorian Aero Club	19	9.4	\$364,405	\$0	\$364,405	\$19,179	\$38,766	\$19,179	\$38,766
100	7697	The Lady Gowrie Child Centre Melbourne Inc	19	9.2	\$42,134	\$0	\$42,134	\$2,218	\$4,589	\$2,218	\$4,589
101	7784	Media Make Up Academy & Agency Pty Ltd	19	8.5	\$112,084	\$26,584	\$85,500	\$5,899	\$13,186	\$4,500	\$10,059
102	8076	Academy of Makeup and Hair Pty Ltd	19	5.9	\$75,830	\$17,770	\$58,060	\$3,991	\$12,919	\$3,056	\$9,892
103	8095	AIRLINES OF TASMANIA PTY LTD	18	9.1	\$491,080	\$0	\$491,080	\$27,282	\$54,084	\$27,282	\$54,084
104	7054	Scripture Union Queensland	18	9.0	\$66,360	\$0	\$66,360	\$3,687	\$7,375	\$3,687	\$7,375
105	7363	Australian College of Event Management Pty Ltd	18	4.2	\$84,000	\$36,000	\$48,000	\$4,667	\$20,241	\$2,667	\$11,566
106	8060	North Regional TAFE	17	7.6	\$50,162	\$0	\$50,162	\$2,951	\$6,595	\$2,951	\$6,595
107	7473	LTT Group Pty Ltd	14	7.2	\$49,200	\$0	\$49,200	\$3,514	\$6,842	\$3,514	\$6,842
108	7276	Contour Systems Pty Ltd	14	6.5	\$65,412	\$0	\$65,412	\$4,672	\$10,006	\$4,672	\$10,006
109	7478	Virtu Design Institute Pty Limited	14	4.3	\$45,054	\$0	\$45,054	\$3,218	\$10,490	\$3,218	\$10,490
110	7239	Southern Cross Education Institute Pty Ltd	13	8.8	\$61,024	\$0	\$61,024	\$4,694	\$6,898	\$4,694	\$6,898
111	3044	The University of Notre Dame Australia	13	8.0	\$47,581	\$0	\$47,581	\$3,660	\$5,969	\$3,660	\$5,969
112	7810	BSI Learning Institute Pty Limited	12	4.3	\$20,843	\$0	\$20,843	\$1,737	\$4,810	\$1,737	\$4,810
113	7819	Atkinson Training and Development Pty Limited	12	4.2	\$17,451	\$0	\$17,451	\$1,454	\$4,155	\$1,454	\$4,155
114	7056	The Malka Group Pty. Ltd.	11	4.5	\$27,041	\$0	\$27,041	\$2,458	\$6,009	\$2,458	\$6,009
115	7479	Queensland Agricultural Training Colleges	11	2.8	\$17,764	\$0	\$17,764	\$1,615	\$6,344	\$1,615	\$6,344
116	7037	Capital Education Group Ltd	10	5.0	\$82,260	\$57,260	\$25,000	\$8,226	\$16,452	\$2,500	\$5,000
117	7135	Milneworth Pty Ltd	10	3.5	\$39,056	\$3,056	\$36,000	\$3,906	\$11,249	\$3,600	\$10,369
118	7122	PA & WJ Dow Pty Ltd	10	3.0	\$175,675	\$0	\$175,675	\$17,568	\$57,788	\$17,568	\$57,788
119	7488	Australian Child Care Career Options (Accco) Pty Ltd	9	2.0	\$14,220	\$800	\$13,420	\$1,580	\$7,025	\$1,491	\$6,629

Rank	Provider ID	Provider name	Students	EFTSL	Tuition fees	Paid upfront	Loans paid	Tuition fees per student	Tuition fees per EFTSL	Loans per student	Loans per EFTSL
120	3019	University of Queensland	8	4.5	\$51,400	\$0	\$51,400	\$6,425	\$11,551	\$6,425	\$11,551
121	7646	Australian Skills Group Pty Ltd	8	2.7	\$40,000	\$0	\$40,000	\$5,000	\$15,015	\$5,000	\$15,015
122	7661	Kiama Community College Incorporated	7	2.7	\$12,150	\$0	\$12,150	\$1,736	\$4,490	\$1,736	\$4,490
123	7108	Australian Academy of Vocational Education and Trades Pty Ltd	7	2.5	\$20,355	\$0	\$20,355	\$2,908	\$8,142	\$2,908	\$8,142
124	7685	Australian Institute of Higher and Further Education Pty Ltd	7	2.1	\$25,040	\$0	\$25,040	\$3,577	\$11,981	\$3,577	\$11,981
125	7729	Global Training Institute Pty Ltd	6	3.9	\$26,586	\$0	\$26,586	\$4,431	\$6,791	\$4,431	\$6,791
126	8103	WILSON HEALTH PTY LTD	6	3.3	\$33,200	\$0	\$33,200	\$5,533	\$9,970	\$5,533	\$9,970
127	7121	Aviation Australia PTY LTD	6	3.2	\$96,427	\$0	\$96,427	\$16,071	\$29,688	\$16,071	\$29,688
128	7485	Just Careers Training Pty Ltd	6	2.0	\$7,694	\$0	\$7,694	\$1,282	\$3,886	\$1,282	\$3,886
129	7050	Headmasters Academy Pty Ltd	6	1.3	\$29,888	\$13,488	\$16,400	\$4,981	\$22,506	\$2,733	\$12,349
130	2252	Avondale College Limited	5	3.3	\$41,220	\$0	\$41,220	\$8,244	\$12,341	\$8,244	\$12,341
131	7569	QUEENSLAND MASTER BUILDERS ASSOCIATION INDUSTRIAL ORGANISATION OF EMPLOYERS	<5	1.5	\$8,950	\$0	\$8,950	n.p.	\$5,991	n.p.	\$5,991
132	7585	House of Learning Pty Ltd	<5	1.3	\$16,188	\$2,795	\$13,393	n.p.	\$12,142	n.p.	\$10,046
133	7651	HCR Constructions Pty Ltd	<5	1.2	\$6,111	\$0	\$6,111	n.p.	\$5,154	n.p.	\$5,154
134	7535	Department of Training and Workforce Development	<5	1.4	\$10,254	\$0	\$10,254	n.p.	\$7,247	n.p.	\$7,247
135	7683	The Redcliffe Aero Club	<5	0.8	\$114,364	\$0	\$103,383	n.p.	\$135,986	n.p.	\$122,929
136	7833	Star Training Academy Pty Ltd	<5	2.5	\$7,214	\$0	\$7,214	n.p.	\$2,886	n.p.	\$2,886
137	7086	Charlton Brown Pty Ltd	<5	0.7	\$5,810	\$0	\$5,810	n.p.	\$8,218	n.p.	\$8,218
138	7080	Pharmaceutical Society of Australia Limited	<5	0.5	\$1,575	\$0	\$1,575	n.p.	\$3,150	n.p.	\$3,150
139	7690	Australasian Lawrence Aged Care College Pty Ltd	<5	1.0	\$8,166	\$3,091	\$5,075	n.p.	\$8,166	n.p.	\$5,075
140	7280	Job Training Institute Pty Ltd	<5	0.5	\$4,805	\$0	\$4,805	n.p.	\$9,609	n.p.	\$9,609
141	7245	Holmes Commercial Colleges (Melbourne) Ltd	<5	0.1	\$3,600	\$0	\$3,600	n.p.	\$28,800	n.p.	\$28,800
142	7261	The International Golf Institute Pty Ltd	<5	0.0	\$1,250	\$0	\$1,250	n.p.	\$500,000	n.p.	\$500,000
		<b>Total:</b>	<b>43,294</b>	<b>18,734.8</b>	<b>\$155,505,633</b>	<b>\$11,863,753</b>	<b>\$143,584,088</b>	<b>\$3,592</b>	<b>\$8,300</b>	<b>\$3,316</b>	<b>\$7,664</b>

**Table 3: VSL providers ordered by VSL loans paid for the period 1 January 2018 to 30 June 2018**

Rank	Provider ID	Provider name	Students	EFTSL	Tuition fees	Paid upfront	Loans paid	Tuition fees per student	Tuition fees per EFTSL	Loans per student	Loans per EFTSL
1	4450	TAFE Queensland	7,059	2,369.8	\$26,036,590	\$1,279,393	\$24,756,973	\$3,688	\$10,987	\$3,507	\$10,447
2	7075	Technical and Further Education Commission of NSW	8,056	3,722.4	\$16,296,080	\$293,266	\$16,002,814	\$2,023	\$4,378	\$1,986	\$4,299
3	3034	Royal Melbourne Institute of Technology	2,847	1,218.1	\$7,803,581	\$119,480	\$7,684,101	\$2,741	\$6,407	\$2,699	\$6,308
4	4366	Box Hill Institute	999	560.9	\$7,259,734	\$3,840	\$7,255,894	\$7,267	\$12,942	\$7,263	\$12,935
5	2177	Swinburne University of Technology	1,574	709.1	\$5,754,923	\$45,239	\$5,709,685	\$3,656	\$8,116	\$3,628	\$8,053
6	7094	Basair Australia Pty Ltd	169	60.9	\$3,888,690	\$17,363	\$3,831,880	\$23,010	\$63,853	\$22,674	\$62,920
7	8071	North Metropolitan TAFE	1,344	801.5	\$3,778,497	\$6,810	\$3,771,687	\$2,811	\$4,714	\$2,806	\$4,706
8	7073	Chisholm Institute of Technical and Further Education	1,517	449.7	\$3,573,880	\$35,642	\$3,538,238	\$2,356	\$7,948	\$2,332	\$7,869
9	3007	Victoria University	1,141	422.8	\$3,481,337	\$3,294	\$3,478,043	\$3,051	\$8,234	\$3,048	\$8,227
10	7028	The Academy of Interactive Entertainment Ltd	626	345.0	\$5,221,519	\$1,934,462	\$3,287,057	\$8,341	\$15,136	\$5,251	\$9,528
11	7338	TAFE SA	1,590	441.7	\$3,197,138	\$12,831	\$3,184,308	\$2,011	\$7,238	\$2,003	\$7,209
12	4363	Melbourne Polytechnic	945	501.2	\$3,166,205	\$22,579	\$3,143,626	\$3,350	\$6,317	\$3,327	\$6,272
13	4383	Holmesglen Institute of TAFE	1,147	731.2	\$3,111,326	\$19,656	\$3,091,670	\$2,713	\$4,255	\$2,695	\$4,228
14	7427	Pragmatic Training Pty. Ltd.	556	259.5	\$2,684,927	\$120,231	\$2,564,696	\$4,829	\$10,348	\$4,613	\$9,884
15	7251	Health Skills Australia Pty Ltd	442	225.9	\$3,887,017	\$1,473,963	\$2,412,643	\$8,794	\$17,205	\$5,458	\$10,679
16	7172	Flight Training Adelaide Pty Ltd	94	52.0	\$2,327,164	\$122,284	\$2,198,295	\$24,757	\$44,727	\$23,386	\$42,251
17	4468	South Metropolitan TAFE	583	254.3	\$2,047,923	\$8,495	\$2,039,428	\$3,513	\$8,052	\$3,498	\$8,019
18	7203	BCA National Training Group Pty Ltd	537	195.8	\$2,030,570	\$230,252	\$1,800,318	\$3,781	\$10,369	\$3,353	\$9,194
19	7082	Bendigo Kangan Institute	607	265.8	\$1,606,696	\$0	\$1,606,696	\$2,647	\$6,044	\$2,647	\$6,044
20	4375	Think: Colleges Pty Ltd	381	153.8	\$2,548,240	\$970,922	\$1,577,318	\$6,688	\$16,567	\$4,140	\$10,255
21	7396	Australis College Pty Ltd	520	240.4	\$1,525,034	\$501	\$1,524,533	\$2,933	\$6,343	\$2,932	\$6,341
22	7329	The French Beauty Academy Pty Ltd	178	142.4	\$1,438,017	\$21,952	\$1,416,065	\$8,079	\$10,096	\$7,955	\$9,942
23	7235	Mater Education Limited	307	136.3	\$1,862,704	\$492,936	\$1,369,768	\$6,067	\$13,671	\$4,462	\$10,053
24	7309	SMR Learning Services Pty Ltd	509	165.0	\$1,386,125	\$25,001	\$1,361,124	\$2,723	\$8,401	\$2,674	\$8,249
25	7159	Emma's Secret Investments Pty Ltd	232	181.4	\$1,492,388	\$149,006	\$1,343,381	\$6,433	\$8,228	\$5,790	\$7,407
26	2200	Central Queensland University	451	191.3	\$1,249,598	\$208	\$1,249,390	\$2,771	\$6,531	\$2,770	\$6,530
27	7145	Goulburn Ovens Institute of TAFE	298	92.2	\$1,220,230	\$475	\$1,219,755	\$4,095	\$13,233	\$4,093	\$13,227
28	3006	Australian Catholic University Limited	349	162.0	\$1,098,791	\$9,598	\$1,089,192	\$3,148	\$6,785	\$3,121	\$6,725
29	7068	Federation Training	375	236.7	\$1,063,021	\$1,571	\$1,061,449	\$2,835	\$4,491	\$2,831	\$4,484
30	7336	New York Film Academy Australia Pty Ltd	190	104.3	\$1,055,719	\$0	\$1,055,719	\$5,556	\$10,122	\$5,556	\$10,122
31	7349	Victorian Fitness Academy Pty Ltd	225	101.3	\$1,000,138	\$2,500	\$997,638	\$4,445	\$9,878	\$4,434	\$9,853
32	2235	Edith Cowan University	180	150.0	\$984,126	\$334	\$983,792	\$5,467	\$6,559	\$5,466	\$6,557
33	7407	Air Gold Coast Pty. Ltd.	50	17.7	\$975,701	\$0	\$975,701	\$19,514	\$55,218	\$19,514	\$55,218
34	4372	Gordon Institute of TAFE	369	247.7	\$953,698	\$1,930	\$951,768	\$2,585	\$3,850	\$2,579	\$3,842
35	7143	Australian Wings Academy Pty Ltd	43	16.8	\$1,000,119	\$63,161	\$936,816	\$23,259	\$59,513	\$21,786	\$55,746
36	7412	Southern Aviation Pty Ltd	29	12.6	\$899,682	\$0	\$899,682	\$31,024	\$71,318	\$31,024	\$71,318
37	7826	Tandem College Pty Ltd	237	93.4	\$819,309	\$0	\$819,309	\$3,457	\$8,773	\$3,457	\$8,773
38	7742	Demi International Beauty Academy Pty Ltd	163	73.3	\$922,604	\$206,853	\$715,751	\$5,660	\$12,595	\$4,391	\$9,771
39	4336	Navitas Professional Institute Pty Ltd	200	70.5	\$1,027,083	\$311,401	\$715,682	\$5,135	\$14,569	\$3,578	\$10,152

Rank	Provider ID	Provider name	Students	EFTSL	Tuition fees	Paid upfront	Loans paid	Tuition fees per student	Tuition fees per EFTSL	Loans per student	Loans per EFTSL
40	2154	Federation University Australia	331	78.1	\$677,243	\$776	\$676,467	\$2,046	\$8,673	\$2,044	\$8,663
41	7570	SEDA Group Pty Ltd	144	61.1	\$670,865	\$2,717	\$668,148	\$4,659	\$10,981	\$4,640	\$10,936
42	7012	Australian Education Group Pty Ltd	119	66.7	\$1,452,000	\$785,334	\$666,666	\$12,202	\$21,782	\$5,602	\$10,001
43	7023	International Film School Sydney Pty Ltd	117	100.0	\$666,633	\$0	\$666,633	\$5,698	\$6,666	\$5,698	\$6,666
44	7382	Strategix Training Group Pty Ltd	191	76.3	\$671,466	\$16,753	\$654,712	\$3,516	\$8,804	\$3,428	\$8,584
45	7387	Cinimod Enterprises Pty Ltd	97	62.4	\$627,000	\$0	\$627,000	\$6,464	\$10,053	\$6,464	\$10,053
46	7460	TasTAFE	341	160.3	\$585,157	\$70	\$585,087	\$1,716	\$3,650	\$1,716	\$3,650
47	7321	Australian Institute of Fashion Design Pty Ltd	120	57.3	\$646,321	\$65,632	\$580,689	\$5,386	\$11,285	\$4,839	\$10,139
48	7306	Health Careers International Pty Ltd	235	112.8	\$1,286,215	\$708,696	\$577,519	\$5,473	\$11,401	\$2,458	\$5,119
49	4377	UOWC Ltd	122	60.7	\$834,847	\$259,635	\$575,212	\$6,843	\$13,761	\$4,715	\$9,482
50	7155	Australian Institute of Family Counselling Ltd	231	55.1	\$572,544	\$0	\$572,544	\$2,479	\$10,399	\$2,479	\$10,399
51	8100	Q ACADEMY PTY LTD	129	51.3	\$652,527	\$109,062	\$543,464	\$5,058	\$12,725	\$4,213	\$10,598
52	7301	Niche Education Group Pty Ltd	133	54.6	\$678,151	\$134,909	\$543,241	\$5,099	\$12,416	\$4,085	\$9,946
53	8095	AIRLINES OF TASMANIA PTY LTD	18	9.1	\$491,080	\$0	\$491,080	\$27,282	\$54,084	\$27,282	\$54,084
54	4406	Canberra Institute of Technology	258	119.4	\$506,913	\$21,501	\$485,412	\$1,965	\$4,247	\$1,881	\$4,067
55	7020	Ella Bache College Pty Ltd	139	52.0	\$579,324	\$95,023	\$484,301	\$4,168	\$11,133	\$3,484	\$9,307
56	7429	CMA Training Group Pty Ltd	108	54.5	\$542,354	\$73,660	\$468,694	\$5,022	\$9,948	\$4,340	\$8,597
57	7142	South West Institute of TAFE	207	66.3	\$438,866	\$329	\$438,537	\$2,120	\$6,624	\$2,119	\$6,619
58	7092	Australian Careers Business College Pty Ltd	135	62.9	\$689,703	\$279,115	\$410,588	\$5,109	\$10,967	\$3,041	\$6,529
59	7131	Transformations - Pathways to Competence & Developing Excellence Pty Ltd	161	63.8	\$397,876	\$480	\$397,396	\$2,471	\$6,235	\$2,468	\$6,228
60	7091	The Health Arts College Pty Ltd	97	34.9	\$378,300	\$0	\$378,300	\$3,900	\$10,833	\$3,900	\$10,833
61	7118	Wodonga Institute of TAFE	187	71.8	\$372,113	\$543	\$371,571	\$1,990	\$5,184	\$1,987	\$5,176
62	7278	Royal Victorian Aero Club	19	9.4	\$364,405	\$0	\$364,405	\$19,179	\$38,766	\$19,179	\$38,766
63	4371	SAE Institute Pty Limited	71	35.6	\$663,536	\$301,944	\$361,592	\$9,346	\$18,633	\$5,093	\$10,154
64	8072	South Regional TAFE	146	58.8	\$340,620	\$251	\$340,369	\$2,333	\$5,795	\$2,331	\$5,791
65	4394	William Angliss Institute of TAFE	122	46.5	\$314,302	\$4,398	\$309,904	\$2,576	\$6,755	\$2,540	\$6,661
66	7189	Australian College of Health & Fitness Pty Ltd	91	33.7	\$301,684	\$0	\$301,684	\$3,315	\$8,958	\$3,315	\$8,958
67	7009	Baptist Business College Ltd	65	37.9	\$450,698	\$154,440	\$296,259	\$6,934	\$11,900	\$4,558	\$7,822
68	7437	MVJ Enterprises Pty Ltd	80	29.3	\$316,583	\$22,600	\$293,983	\$3,957	\$10,823	\$3,675	\$10,051
69	7541	Australasian Beauty Therapy Academy Pty Ltd	62	30.6	\$287,700	\$0	\$287,700	\$4,640	\$9,414	\$4,640	\$9,414
70	7372	Unity College Australia Incorporated	110	48.6	\$269,249	\$0	\$269,249	\$2,448	\$5,540	\$2,448	\$5,540
71	8073	Central Regional TAFE	82	48.3	\$261,992	\$250	\$261,742	\$3,195	\$5,426	\$3,192	\$5,421
72	7124	Academy of Information Technology Pty Ltd	102	27.1	\$371,622	\$131,053	\$240,570	\$3,643	\$13,723	\$2,359	\$8,883
73	7700	Selmar Holdings Pty Ltd	114	53.9	\$272,464	\$33,349	\$239,115	\$2,390	\$5,052	\$2,098	\$4,434
74	7347	Design Schools Australia Pty Ltd	43	24.4	\$340,235	\$155,488	\$184,747	\$7,912	\$13,928	\$4,296	\$7,563
75	7787	QIHE Pty Ltd	44	22.3	\$182,091	\$0	\$182,091	\$4,138	\$8,182	\$4,138	\$8,182
76	2148	The National Institute of Dramatic Art	43	19.1	\$297,500	\$121,000	\$176,500	\$6,919	\$15,543	\$4,105	\$9,222
77	7122	PA & WJ Dow Pty Ltd	10	3.0	\$175,675	\$0	\$175,675	\$17,568	\$57,788	\$17,568	\$57,788
78	7262	EQUALS International (Aust) Pty Ltd	46	15.7	\$171,438	\$3,192	\$168,246	\$3,727	\$10,939	\$3,658	\$10,736
79	7162	Casey College of Beauty Therapy Pty Ltd	44	16.1	\$199,184	\$36,288	\$162,895	\$4,527	\$12,355	\$3,702	\$10,104
80	7756	Australian College of Fitness and Bodywork Pty Ltd	66	23.9	\$169,200	\$7,538	\$161,662	\$2,564	\$7,072	\$2,449	\$6,757

Rank	Provider ID	Provider name	Students	EFTSL	Tuition fees	Paid upfront	Loans paid	Tuition fees per student	Tuition fees per EFTSL	Loans per student	Loans per EFTSL
81	7325	LaTrobe International Galleries Pty. Ltd.	34	14.6	\$191,625	\$43,581	\$148,044	\$5,636	\$13,118	\$4,354	\$10,135
82	4407	Alphacrucis College Limited	37	3.5	\$147,701	\$0	\$147,701	\$3,992	\$42,200	\$3,992	\$42,200
83	7465	The Mask Academy Pty Ltd	55	13.8	\$140,833	\$0	\$140,833	\$2,561	\$10,181	\$2,561	\$10,181
84	7032	YourLife Health and Learning Inc	90	21.3	\$136,400	\$18,052	\$118,349	\$1,516	\$6,416	\$1,315	\$5,566
85	7937	ACMUSE Australia Pty Ltd	21	11.1	\$112,717	\$0	\$112,717	\$5,368	\$10,150	\$5,368	\$10,150
86	7197	Proteus Technologies Pty Ltd	53	23.1	\$112,795	\$600	\$112,195	\$2,128	\$4,874	\$2,117	\$4,849
87	7378	Shakra Pty Ltd	21	11.5	\$116,725	\$4,850	\$111,875	\$5,558	\$10,177	\$5,327	\$9,754
88	4397	Sarina Russo Schools Australia Pty Ltd	86	19.4	\$111,650	\$0	\$111,650	\$1,298	\$5,758	\$1,298	\$5,758
89	7683	The Redcliffe Aero Club	<5	0.8	\$114,364	\$0	\$103,383	n.p.	\$135,986	n.p.	\$122,929
90	7121	Aviation Australia PTY LTD	6	3.2	\$96,427	\$0	\$96,427	\$16,071	\$29,688	\$16,071	\$29,688
91	7648	SCA Hair & Beauty Academy Pty Ltd	20	9.5	\$95,000	\$0	\$95,000	\$4,750	\$10,000	\$4,750	\$10,000
92	7052	Melbourne Rudolf Steiner Seminar Ltd	38	18.3	\$182,125	\$89,084	\$93,041	\$4,793	\$9,979	\$2,448	\$5,098
93	7590	Melbourne College of Hairdressing Beauty Therapy & Natural Medicine Pty Ltd	29	12.3	\$92,882	\$0	\$92,882	\$3,203	\$7,524	\$3,203	\$7,524
94	7229	Australian Nursing & Midwifery Federation (SA Branch)	51	19.6	\$93,256	\$505	\$92,750	\$1,829	\$4,749	\$1,819	\$4,723
95	7701	Aurora Training Institute Pty Ltd	35	15.8	\$92,231	\$0	\$92,231	\$2,635	\$5,823	\$2,635	\$5,823
96	7102	Sunraysia Institute of TAFE	87	27.1	\$89,217	\$10	\$89,207	\$1,025	\$3,288	\$1,025	\$3,288
97	3001	Charles Darwin University	47	17.5	\$86,729	\$445	\$86,284	\$1,845	\$4,964	\$1,836	\$4,939
98	7784	Media Make Up Academy & Agency Pty Ltd	19	8.5	\$112,084	\$26,584	\$85,500	\$5,899	\$13,186	\$4,500	\$10,059
99	7380	Kreate Pty Ltd	55	14.0	\$80,823	\$0	\$80,823	\$1,470	\$5,794	\$1,470	\$5,794
100	8034	Envirotech Education Pty Ltd	45	15.5	\$79,525	\$0	\$79,525	\$1,767	\$5,114	\$1,767	\$5,114
101	7054	Scripture Union Queensland	18	9.0	\$66,360	\$0	\$66,360	\$3,687	\$7,375	\$3,687	\$7,375
102	7276	Contour Systems Pty Ltd	14	6.5	\$65,412	\$0	\$65,412	\$4,672	\$10,006	\$4,672	\$10,006
103	7163	Australian National Memorial Theatre Limited	20	7.8	\$61,711	\$635	\$61,076	\$3,086	\$7,940	\$3,054	\$7,858
104	7239	Southern Cross Education Institute Pty Ltd	13	8.8	\$61,024	\$0	\$61,024	\$4,694	\$6,898	\$4,694	\$6,898
105	8076	Academy of Makeup and Hair Pty Ltd	19	5.9	\$75,830	\$17,770	\$58,060	\$3,991	\$12,919	\$3,056	\$9,892
106	7001	Australian College of the Arts Pty Ltd	23	5.8	\$67,477	\$11,194	\$56,283	\$2,934	\$11,735	\$2,447	\$9,788
107	3019	University of Queensland	8	4.5	\$51,400	\$0	\$51,400	\$6,425	\$11,551	\$6,425	\$11,551
108	7041	Sydney Institute of Health Sciences Pty. Limited	26	6.3	\$51,030	\$0	\$51,030	\$1,963	\$8,061	\$1,963	\$8,061
109	8060	North Regional TAFE	17	7.6	\$50,162	\$0	\$50,162	\$2,951	\$6,595	\$2,951	\$6,595
110	7473	LTT Group Pty Ltd	14	7.2	\$49,200	\$0	\$49,200	\$3,514	\$6,842	\$3,514	\$6,842
111	7363	Australian College of Event Management Pty Ltd	18	4.2	\$84,000	\$36,000	\$48,000	\$4,667	\$20,241	\$2,667	\$11,566
112	3044	The University of Notre Dame Australia	13	8.0	\$47,581	\$0	\$47,581	\$3,660	\$5,969	\$3,660	\$5,969
113	7478	Virtu Design Institute Pty Limited	14	4.3	\$45,054	\$0	\$45,054	\$3,218	\$10,490	\$3,218	\$10,490
114	7697	The Lady Gowrie Child Centre Melbourne Inc	19	9.2	\$42,134	\$0	\$42,134	\$2,218	\$4,589	\$2,218	\$4,589
115	2252	Avondale College Limited	5	3.3	\$41,220	\$0	\$41,220	\$8,244	\$12,341	\$8,244	\$12,341
116	7646	Australian Skills Group Pty Ltd	8	2.7	\$40,000	\$0	\$40,000	\$5,000	\$15,015	\$5,000	\$15,015
117	7135	Milneworth Pty Ltd	10	3.5	\$39,056	\$3,056	\$36,000	\$3,906	\$11,249	\$3,600	\$10,369
118	8103	WILSON HEALTH PTY LTD	6	3.3	\$33,200	\$0	\$33,200	\$5,533	\$9,970	\$5,533	\$9,970
119	7230	Foundation for Education & Training Ltd	21	6.4	\$29,658	\$500	\$29,158	\$1,412	\$4,607	\$1,388	\$4,529
120	7056	The Malka Group Pty. Ltd.	11	4.5	\$27,041	\$0	\$27,041	\$2,458	\$6,009	\$2,458	\$6,009
121	7729	Global Training Institute Pty Ltd	6	3.9	\$26,586	\$0	\$26,586	\$4,431	\$6,791	\$4,431	\$6,791

Rank	Provider ID	Provider name	Students	EFTSL	Tuition fees	Paid upfront	Loans paid	Tuition fees per student	Tuition fees per EFTSL	Loans per student	Loans per EFTSL
122	7685	Australian Institute of Higher and Further Education Pty Ltd	7	2.1	\$25,040	\$0	\$25,040	\$3,577	\$11,981	\$3,577	\$11,981
123	7037	Capital Education Group Ltd	10	5.0	\$82,260	\$57,260	\$25,000	\$8,226	\$16,452	\$2,500	\$5,000
124	7810	BSI Learning Institute Pty Limited	12	4.3	\$20,843	\$0	\$20,843	\$1,737	\$4,810	\$1,737	\$4,810
125	7108	Australian Academy of Vocational Education and Trades Pty Ltd	7	2.5	\$20,355	\$0	\$20,355	\$2,908	\$8,142	\$2,908	\$8,142
126	7479	Queensland Agricultural Training Colleges	11	2.8	\$17,764	\$0	\$17,764	\$1,615	\$6,344	\$1,615	\$6,344
127	7819	Atkinson Training and Development Pty Limited	12	4.2	\$17,451	\$0	\$17,451	\$1,454	\$4,155	\$1,454	\$4,155
128	7050	Headmasters Academy Pty Ltd	6	1.3	\$29,888	\$13,488	\$16,400	\$4,981	\$22,506	\$2,733	\$12,349
129	7488	Australian Child Care Career Options (Accco) Pty Ltd	9	2.0	\$14,220	\$800	\$13,420	\$1,580	\$7,025	\$1,491	\$6,629
130	7585	House of Learning Pty Ltd	<5	1.3	\$16,188	\$2,795	\$13,393	n.p.	\$12,142	n.p.	\$10,046
131	7661	Kiama Community College Incorporated	7	2.7	\$12,150	\$0	\$12,150	\$1,736	\$4,490	\$1,736	\$4,490
132	7535	Department of Training and Workforce Development	<5	1.4	\$10,254	\$0	\$10,254	n.p.	\$7,247	n.p.	\$7,247
133	7569	QUEENSLAND MASTER BUILDERS ASSOCIATION INDUSTRIAL ORGANISATION OF EMPLOYERS	<5	1.5	\$8,950	\$0	\$8,950	n.p.	\$5,991	n.p.	\$5,991
134	7485	Just Careers Training Pty Ltd	6	2.0	\$7,694	\$0	\$7,694	\$1,282	\$3,886	\$1,282	\$3,886
135	7833	Star Training Academy Pty Ltd	<5	2.5	\$7,214	\$0	\$7,214	n.p.	\$2,886	n.p.	\$2,886
136	7651	HCR Constructions Pty Ltd	<5	1.2	\$6,111	\$0	\$6,111	n.p.	\$5,154	n.p.	\$5,154
137	7086	Charlton Brown Pty Ltd	<5	0.7	\$5,810	\$0	\$5,810	n.p.	\$8,218	n.p.	\$8,218
138	7690	Australasian Lawrence Aged Care College Pty Ltd	<5	1.0	\$8,166	\$3,091	\$5,075	n.p.	\$8,166	n.p.	\$5,075
139	7280	Job Training Institute Pty Ltd	<5	0.5	\$4,805	\$0	\$4,805	n.p.	\$9,609	n.p.	\$9,609
140	7245	Holmes Commercial Colleges (Melbourne) Ltd	<5	0.1	\$3,600	\$0	\$3,600	n.p.	\$28,800	n.p.	\$28,800
141	7080	Pharmaceutical Society of Australia Limited	<5	0.5	\$1,575	\$0	\$1,575	n.p.	\$3,150	n.p.	\$3,150
142	7261	The International Golf Institute Pty Ltd	<5	0.0	\$1,250	\$0	\$1,250	n.p.	\$500,000	n.p.	\$500,000
		<b>Total:</b>	<b>43,294</b>	<b>18,734.8</b>	<b>\$155,505,633</b>	<b>\$11,863,753</b>	<b>\$143,584,088</b>	<b>\$3,592</b>	<b>\$8,300</b>	<b>\$3,316</b>	<b>\$7,664</b>



**Table 4: VSL courses ordered by VSL-assisted enrolments for the period 1 January 2018 to 30 June 2018**

Rank	Course Code	Course name	Enrolments	EFTSL	Tuition fees	Paid upfront	Loans paid	Tuition fees per enrolment	Tuition fees per EFTSL	Loans per enrolment	Loans per EFTSL
1	HLT54115	Diploma of Nursing	8,943	3,913.0	\$34,642,543	\$4,278,503	\$30,363,404	\$3,874	\$8,853	\$3,395	\$7,760
2	CHC52015	Diploma of Community Services	3,175	1,370.3	\$7,101,720	\$211,083	\$6,890,637	\$2,237	\$5,183	\$2,170	\$5,028
3	CHC50113	Diploma of Early Childhood Education and Care	2,966	1,294.8	\$5,646,842	\$291,702	\$5,355,141	\$1,904	\$4,361	\$1,806	\$4,136
4	SHB50115	Diploma of Beauty Therapy	2,450	1,127.8	\$10,602,783	\$1,460,866	\$9,141,917	\$4,328	\$9,401	\$3,731	\$8,106
5	CUA51015	Diploma of Screen and Media	2,389	1,182.2	\$11,561,389	\$1,255,659	\$10,305,730	\$4,839	\$9,780	\$4,314	\$8,718
6	BSB50215	Diploma of Business	1,122	372.2	\$2,843,515	\$166,032	\$2,677,483	\$2,534	\$7,639	\$2,386	\$7,193
7	HLT52015	Diploma of Remedial Massage	1,016	504.6	\$3,787,885	\$189,632	\$3,598,253	\$3,728	\$7,506	\$3,542	\$7,130
8	CHC51015	Diploma of Counselling	889	305.9	\$2,418,501	\$162,957	\$2,255,543	\$2,720	\$7,905	\$2,537	\$7,373
9	FNS50215	Diploma of Accounting	803	202.2	\$1,272,532	\$80,037	\$1,192,495	\$1,585	\$6,293	\$1,485	\$5,898
10	SIS50612	Diploma of Sport Development	710	277.8	\$3,250,444	\$76,859	\$3,173,584	\$4,578	\$11,699	\$4,470	\$11,422
11	CUA51115	Diploma of Visual Arts	682	258.8	\$2,312,988	\$88,705	\$2,224,283	\$3,391	\$8,938	\$3,261	\$8,595
12	CUA50815	Diploma of Music Industry	662	356.3	\$2,911,317	\$347,342	\$2,563,975	\$4,398	\$8,171	\$3,873	\$7,196
13	BSB51915	Diploma of Leadership and Management	654	198.8	\$1,133,902	\$24,498	\$1,109,404	\$1,734	\$5,703	\$1,696	\$5,580
14	22268VIC	Advanced Diploma of Building Design (Architectural)	638	318.9	\$1,738,249	\$43,540	\$1,694,709	\$2,725	\$5,451	\$2,656	\$5,314
15	CHC50413	Diploma of Youth Work	636	240.5	\$1,538,588	\$78,881	\$1,459,707	\$2,419	\$6,398	\$2,295	\$6,070
16	AVI50215	Diploma of Aviation (Commercial Pilot Licence - Aeroplane)	629	273.8	\$14,621,440	\$226,849	\$14,390,766	\$23,246	\$53,406	\$22,879	\$52,564
17	CPC50210	Diploma of Building and Construction (Building)	628	306.3	\$1,370,275	\$10,022	\$1,360,253	\$2,182	\$4,474	\$2,166	\$4,442
18	CPP50911	Diploma of Building Design	628	183.9	\$1,076,926	\$37,172	\$1,039,753	\$1,715	\$5,855	\$1,656	\$5,653
19	MSF50213	Diploma of Interior Design and Decoration	599	239.1	\$1,838,012	\$279,706	\$1,558,306	\$3,068	\$7,689	\$2,602	\$6,519
20	BSB50415	Diploma of Business Administration	591	150.4	\$1,007,729	\$114,428	\$893,301	\$1,705	\$6,701	\$1,512	\$5,940
21	ICT50415	Diploma of Information Technology Networking	549	276.4	\$1,984,899	\$57,889	\$1,927,011	\$3,615	\$7,181	\$3,510	\$6,972
22	CUA50715	Diploma of Graphic Design	500	226.5	\$1,547,617	\$41,726	\$1,505,891	\$3,095	\$6,834	\$3,012	\$6,649
23	CHC53315	Diploma of Mental Health	472	141.1	\$816,265	\$8,098	\$808,167	\$1,729	\$5,784	\$1,712	\$5,726
24	SIT50316	Diploma of Event Management	458	232.0	\$1,064,875	\$60,880	\$1,003,996	\$2,325	\$4,591	\$2,192	\$4,328
25	BSB52115	Diploma of Library and Information Services	435	109.6	\$897,399	\$11,282	\$886,117	\$2,063	\$8,190	\$2,037	\$8,087
26	MST50116	Diploma of Applied Fashion Design and Merchandising	396	175.2	\$1,538,473	\$52,057	\$1,486,416	\$3,885	\$8,783	\$3,754	\$8,486
27	MSL50116	Diploma of Laboratory Technology	376	162.0	\$764,792	\$6,938	\$757,854	\$2,034	\$4,720	\$2,016	\$4,677
28	CHC50313	Diploma of Child, Youth and Family Intervention	357	119.8	\$1,083,170	\$95,747	\$987,423	\$3,034	\$9,042	\$2,766	\$8,243
29	BSB50615	Diploma of Human Resources Management	352	84.2	\$501,396	\$10,345	\$491,051	\$1,424	\$5,958	\$1,395	\$5,835
30	CUA60615	Advanced Diploma of Screen and Media	325	193.7	\$1,535,886	\$116,023	\$1,419,864	\$4,726	\$7,931	\$4,369	\$7,332
31	BSB52215	Diploma of Legal Services	318	104.4	\$903,914	\$44,298	\$859,616	\$2,843	\$8,658	\$2,703	\$8,234
32	SIT50116	Diploma of Travel and Tourism Management	304	123.8	\$660,951	\$70,121	\$590,831	\$2,174	\$5,337	\$1,944	\$4,771
33	BSB51415	Diploma of Project Management	296	75.7	\$477,885	\$3,658	\$474,226	\$1,614	\$6,316	\$1,602	\$6,267
34	ICT50115	Diploma of Information Technology	293	137.0	\$935,369	\$4,152	\$931,217	\$3,192	\$6,825	\$3,178	\$6,795
35	ICT50215	Diploma of Digital and Interactive Games	264	123.1	\$1,431,951	\$275,337	\$1,156,614	\$5,424	\$11,630	\$4,381	\$9,394
36	22228VIC	Advanced Diploma of Engineering Technology	258	113.7	\$636,735	\$962	\$635,773	\$2,468	\$5,599	\$2,464	\$5,590
37	ICT50715	Diploma of Software Development	251	116.3	\$885,922	\$36,306	\$849,616	\$3,530	\$7,615	\$3,385	\$7,303
38	AHC51116	Diploma of Conservation and Land Management	248	132.3	\$655,002	\$20	\$654,982	\$2,641	\$4,953	\$2,641	\$4,952
39	CUA50915	Diploma of Photography and Photo Imaging	229	91.6	\$831,209	\$39,403	\$791,806	\$3,630	\$9,077	\$3,458	\$8,647
40	SIT50416	Diploma of Hospitality Management	224	97.2	\$432,900	\$32,694	\$400,205	\$1,933	\$4,456	\$1,787	\$4,119
41	CUA60715	Advanced Diploma of Visual Arts	220	80.6	\$699,421	\$12,709	\$686,712	\$3,179	\$8,679	\$3,121	\$8,521
42	MEM60112	Advanced Diploma of Engineering	205	107.7	\$440,553	\$1,286	\$439,267	\$2,149	\$4,090	\$2,143	\$4,078

Rank	Course Code	Course name	Enrolments	EFTSL	Tuition fees	Paid upfront	Loans paid	Tuition fees per enrolment	Tuition fees per EFTSL	Loans per enrolment	Loans per EFTSL
43	ICT50615	Diploma of Website Development	185	65.1	\$446,044	\$10,314	\$435,731	\$2,411	\$6,851	\$2,355	\$6,693
44	CUA60515	Advanced Diploma of Music Industry	180	107.5	\$780,495	\$1,329	\$779,166	\$4,336	\$7,261	\$4,329	\$7,248
45	CPC60115	Advanced Diploma of Building Surveying	180	90.4	\$549,420	\$29,644	\$519,776	\$3,052	\$6,080	\$2,888	\$5,752
46	SHB50216	Diploma of Salon Management	179	75.8	\$382,967	\$0	\$382,967	\$2,139	\$5,054	\$2,139	\$5,054
47	CHC53215	Diploma of Alcohol and Other Drugs	179	52.5	\$301,373	\$151	\$301,222	\$1,684	\$5,740	\$1,683	\$5,737
48	CUA50415	Diploma of Live Production and Technical Services	165	86.3	\$645,596	\$10,849	\$634,747	\$3,913	\$7,484	\$3,847	\$7,358
49	AHC50416	Diploma of Horticulture	155	75.0	\$383,767	\$44	\$383,723	\$2,476	\$5,116	\$2,476	\$5,115
50	HLT51015	Diploma of Paramedical Science	150	87.5	\$567,503	\$0	\$567,503	\$3,783	\$6,485	\$3,783	\$6,485
51	FNS60215	Advanced Diploma of Accounting	143	29.1	\$181,862	\$5,341	\$176,521	\$1,272	\$6,248	\$1,234	\$6,064
52	CUA60315	Advanced Diploma of Graphic Design	134	60.7	\$450,160	\$3,364	\$446,795	\$3,359	\$7,418	\$3,334	\$7,362
53	CPP50116	Diploma of Surveying	130	66.6	\$400,314	\$979	\$399,335	\$3,079	\$6,014	\$3,072	\$5,999
54	AHC50616	Diploma of Landscape Design	123	51.0	\$287,566	\$5,832	\$281,734	\$2,338	\$5,642	\$2,291	\$5,527
55	BSB52415	Diploma of Marketing and Communication	120	47.9	\$335,567	\$2,794	\$332,773	\$2,796	\$7,011	\$2,773	\$6,953
56	10343NAT	Advanced Diploma of Professional Game Development	117	64.2	\$1,159,098	\$727,832	\$431,266	\$9,907	\$18,065	\$3,686	\$6,721
57	UEE62111	Advanced Diploma of Engineering Technology - Electrical	116	51.1	\$309,236	\$10,001	\$299,235	\$2,666	\$6,048	\$2,580	\$5,852
58	MEM50212	Diploma of Engineering - Technical	115	42.0	\$243,964	\$324	\$243,640	\$2,121	\$5,807	\$2,119	\$5,799
59	22276VIC	Advanced Diploma of Legal Practice	110	51.7	\$374,876	\$2,287	\$372,589	\$3,408	\$7,248	\$3,387	\$7,204
60	AVI50415	Diploma of Aviation (Instrument Rating)	98	44.8	\$1,878,517	\$40,021	\$1,785,168	\$19,169	\$41,904	\$18,216	\$39,822
61	CHC53415	Diploma of Leisure and Health	97	53.0	\$295,680	\$0	\$295,680	\$3,048	\$5,579	\$3,048	\$5,579
62	MST60116	Advanced Diploma of Applied Fashion Design and Merchandising	94	37.0	\$282,753	\$820	\$281,933	\$3,008	\$7,646	\$2,999	\$7,624
63	TLI50415	Diploma of Logistics	93	27.9	\$165,730	\$3,109	\$162,620	\$1,782	\$5,944	\$1,749	\$5,833
64	FNS50615	Diploma of Financial Planning	92	38.9	\$189,736	\$1,301	\$188,435	\$2,062	\$4,879	\$2,048	\$4,845
65	HLT57715	Diploma of Practice Management	91	28.4	\$145,270	\$9,572	\$135,698	\$1,596	\$5,120	\$1,491	\$4,783
66	HLT55115	Diploma of Dental Technology	87	29.3	\$289,146	\$19,078	\$270,068	\$3,324	\$9,866	\$3,104	\$9,215
67	BSB61015	Advanced Diploma of Leadership and Management	87	25.8	\$146,778	\$126	\$146,652	\$1,687	\$5,693	\$1,686	\$5,688
68	AHC50116	Diploma of Agriculture	83	30.4	\$144,175	\$0	\$144,175	\$1,737	\$4,747	\$1,737	\$4,747
69	PSP50916	Diploma of Interpreting (LOTE-English)	81	19.5	\$106,930	\$3,167	\$103,763	\$1,320	\$5,481	\$1,281	\$5,319
70	UEE60411	Advanced Diploma of Computer Systems Engineering	79	30.9	\$206,867	\$0	\$206,867	\$2,619	\$6,705	\$2,619	\$6,705
71	BSB80615	Graduate Diploma of Management (Learning)	76	45.4	\$461,100	\$0	\$461,100	\$6,067	\$10,161	\$6,067	\$10,161
72	MEM50311	Diploma of Jewellery and Object Design	74	21.8	\$214,635	\$0	\$214,635	\$2,900	\$9,841	\$2,900	\$9,841
73	BSB61115	Advanced Diploma of Conveyancing	74	18.9	\$153,560	\$7,084	\$146,476	\$2,075	\$8,109	\$1,979	\$7,735
74	ICT60515	Advanced Diploma of Computer Systems Technology	72	30.7	\$221,592	\$252	\$221,340	\$3,078	\$7,229	\$3,074	\$7,221
75	SIS50115	Diploma of Sport and Recreation Management	71	24.2	\$188,885	\$1,732	\$187,153	\$2,660	\$7,800	\$2,636	\$7,729
76	ACM50110	Diploma of Animal Technology	70	31.2	\$185,200	\$927	\$184,273	\$2,646	\$5,938	\$2,632	\$5,908
77	BSB52015	Diploma of Conveyancing	66	29.0	\$111,123	\$2,961	\$108,161	\$1,684	\$3,828	\$1,639	\$3,726
78	SIS50310	Diploma of Outdoor Recreation	64	35.4	\$196,570	\$59	\$196,511	\$3,071	\$5,552	\$3,070	\$5,550
79	MSF60113	Advanced Diploma of Interior Design	64	33.2	\$185,090	\$9,140	\$175,950	\$2,892	\$5,577	\$2,749	\$5,301
80	ICT50315	Diploma of Information Technology Systems Administration	64	21.1	\$195,053	\$3,459	\$191,594	\$3,048	\$9,249	\$2,994	\$9,085
81	FNS50315	Diploma of Finance and Mortgage Broking Management	58	27.9	\$96,461	\$0	\$96,461	\$1,663	\$3,454	\$1,663	\$3,454
82	UEE60211	Advanced Diploma of Electronics and Communications Engineering	55	22.4	\$152,986	\$735	\$152,250	\$2,782	\$6,819	\$2,768	\$6,786

Rank	Course Code	Course name	Enrolments	EFTSL	Tuition fees	Paid upfront	Loans paid	Tuition fees per enrolment	Tuition fees per EFTSL	Loans per enrolment	Loans per EFTSL
83	SIT60316	Advanced Diploma of Hospitality Management	53	23.1	\$83,193	\$145	\$83,048	\$1,570	\$3,608	\$1,567	\$3,602
84	CHC50213	Diploma of School Age Education and Care	53	15.4	\$60,247	\$705	\$59,542	\$1,137	\$3,904	\$1,123	\$3,858
85	22091VIC	Diploma of Professional Writing and Editing	52	21.6	\$149,468	\$93	\$149,375	\$2,874	\$6,905	\$2,873	\$6,901
86	AVI50315	Diploma of Aviation (Commercial Pilot Licence - Helicopter)	51	20.7	\$2,363,848	\$158,699	\$2,205,149	\$46,350	\$113,960	\$43,238	#####
87	ICT50915	Diploma of Digital Media Technologies	51	15.7	\$84,256	\$0	\$84,256	\$1,652	\$5,362	\$1,652	\$5,362
88	CUA51215	Diploma of Ceramics	50	13.0	\$139,312	\$9,324	\$129,988	\$2,786	\$10,741	\$2,600	\$10,022
89	BSB60215	Advanced Diploma of Business	49	16.1	\$81,494	\$454	\$81,040	\$1,663	\$5,058	\$1,654	\$5,030
90	UEE50511	Diploma of Electronics and Communications Engineering	48	12.9	\$112,803	\$999	\$111,804	\$2,350	\$8,772	\$2,329	\$8,695
91	BSB51315	Diploma of Work Health and Safety	48	12.4	\$75,589	\$0	\$75,589	\$1,575	\$6,120	\$1,575	\$6,120
92	10326NAT	Diploma of Education (Aboriginal and Torres Strait Islander)	46	31.2	\$127,658	\$6,077	\$121,581	\$2,775	\$4,089	\$2,643	\$3,895
93	ICT60215	Advanced Diploma of Network Security	45	19.0	\$159,027	\$14,700	\$144,327	\$3,534	\$8,374	\$3,207	\$7,600
94	CPP60116	Advanced Diploma of Surveying	45	17.4	\$128,817	\$168	\$128,649	\$2,863	\$7,399	\$2,859	\$7,389
95	10134NAT	Graduate Diploma of Counselling and Integrated Psychotherapy (Spiritual)	45	10.9	\$134,040	\$0	\$134,040	\$2,979	\$12,269	\$2,979	\$12,269
96	CHC51115	Diploma of Financial Counselling	43	7.5	\$40,202	\$516	\$39,686	\$935	\$5,328	\$923	\$5,259
97	SIR50217	Diploma of Visual Merchandising	40	15.4	\$118,679	\$6,804	\$111,874	\$2,967	\$7,713	\$2,797	\$7,270
98	CUA60213	Advanced Diploma of Live Production and Management Services	39	32.9	\$250,825	\$0	\$250,825	\$6,431	\$7,629	\$6,431	\$7,629
99	10527NAT	Advanced Diploma of Rudolf Steiner Education	38	18.3	\$182,125	\$89,084	\$93,041	\$4,793	\$9,979	\$2,448	\$5,098
100	22229VIC	Diploma of Engineering Technology	38	14.2	\$73,841	\$0	\$73,841	\$1,943	\$5,212	\$1,943	\$5,212
101	RII50515	Diploma of Civil Construction Design	36	18.9	\$68,294	\$0	\$68,294	\$1,897	\$3,621	\$1,897	\$3,621
102	CHC52115	Diploma of Community Development	35	11.6	\$42,395	\$0	\$42,395	\$1,211	\$3,666	\$1,211	\$3,666
103	22284VIC	Diploma of Business (Public Relations)	34	17.6	\$149,726	\$209	\$149,517	\$4,404	\$8,498	\$4,398	\$8,487
104	BSB50815	Diploma of International Business	34	11.1	\$86,894	\$3,010	\$83,884	\$2,556	\$7,857	\$2,467	\$7,585
105	10219NAT	Diploma of Holistic Management - Sustainable Rural Lands, Business and Communities	33	19.7	\$52,651	\$0	\$52,651	\$1,595	\$2,678	\$1,595	\$2,678
106	SIT60216	Advanced Diploma of Event Management	33	11.4	\$68,026	\$8,027	\$59,998	\$2,061	\$5,943	\$1,818	\$5,242
107	CHC62015	Advanced Diploma of Community Sector Management	33	8.4	\$52,202	\$1,165	\$51,037	\$1,582	\$6,208	\$1,547	\$6,070
108	SIR50212	Diploma of Visual Merchandising	32	11.1	\$74,960	\$13,285	\$61,675	\$2,343	\$6,737	\$1,927	\$5,543
109	SIT60116	Advanced Diploma of Travel and Tourism Management	30	18.8	\$53,582	\$340	\$53,242	\$1,786	\$2,845	\$1,775	\$2,827
110	PSP60916	Advanced Diploma of Interpreting (LOTE-English)	29	17.6	\$78,229	\$0	\$78,229	\$2,698	\$4,435	\$2,698	\$4,435
111	BSB61315	Advanced Diploma of Marketing and Communication	29	14.7	\$122,026	\$0	\$122,026	\$4,208	\$8,324	\$4,208	\$8,324
112	AVI50516	Diploma of Aviation (Flight Instructor)	28	11.1	\$400,086	\$26,818	\$373,267	\$14,289	\$36,073	\$13,331	\$33,655
113	CHC50513	Diploma of Youth Justice	28	8.0	\$26,708	\$0	\$26,708	\$954	\$3,350	\$954	\$3,350
114	AHC50516	Diploma of Arboriculture	27	16.3	\$51,038	\$180	\$50,858	\$1,890	\$3,136	\$1,884	\$3,125
115	AHC51416	Diploma of Agribusiness Management	25	8.1	\$77,842	\$468	\$77,374	\$3,114	\$9,618	\$3,095	\$9,561
116	MEM60211	Advanced Diploma of Jewellery and Object Design	24	5.6	\$44,017	\$0	\$44,017	\$1,834	\$7,921	\$1,834	\$7,921
117	ICT60315	Advanced Diploma of Information Technology Business Analysis	24	5.1	\$38,933	\$0	\$38,933	\$1,622	\$7,694	\$1,622	\$7,694
118	HLT57915	Diploma of Anaesthetic Technology	23	5.9	\$115,055	\$22,627	\$92,428	\$5,002	\$19,428	\$4,019	\$15,608
119	TAE50216	Diploma of Training Design and Development	23	4.9	\$29,739	\$52	\$29,687	\$1,293	\$6,059	\$1,291	\$6,048
120	FD50311	Diploma of Food Science and Technology	20	11.2	\$52,794	\$35	\$52,759	\$2,640	\$4,713	\$2,638	\$4,710

Rank	Course Code	Course name	Enrolments	EFTSL	Tuition fees	Paid upfront	Loans paid	Tuition fees per enrolment	Tuition fees per EFTSL	Loans per enrolment	Loans per EFTSL
121	CPC50308	Diploma of Building and Construction (Management)	20	4.1	\$19,679	\$0	\$19,679	\$984	\$4,851	\$984	\$4,851
122	AHC52116	Diploma of Permaculture	19	6.9	\$51,452	\$0	\$51,452	\$2,708	\$7,457	\$2,708	\$7,457
123	AVI60216	Advanced Diploma of Aviation (Pilot in Command)	18	9.7	\$158,794	\$21,435	\$137,359	\$8,822	\$16,340	\$7,631	\$14,134
124	CUA60415	Advanced Diploma of Creative Product Development	18	8.5	\$80,387	\$0	\$80,387	\$4,466	\$9,429	\$4,466	\$9,429
125	HLT57415	Diploma of Audiometry	18	5.8	\$33,570	\$3,000	\$30,570	\$1,865	\$5,748	\$1,698	\$5,235
126	22283VIC	Advanced Diploma of Business (Public Relations)	17	8.2	\$69,360	\$295	\$69,065	\$4,080	\$8,496	\$4,063	\$8,460
127	AHC60316	Advanced Diploma of Agribusiness Management	17	4.5	\$27,511	\$0	\$27,511	\$1,618	\$6,114	\$1,618	\$6,114
128	BSB60915	Advanced Diploma of Management (Human Resources)	17	4.4	\$21,396	\$42	\$21,354	\$1,259	\$4,831	\$1,256	\$4,821
129	22315VIC	Diploma of Theatre Arts	16	14.9	\$122,902	\$0	\$122,902	\$7,681	\$8,240	\$7,681	\$8,240
130	10073NAT	Advanced Diploma of Acting	16	6.4	\$51,595	\$635	\$50,960	\$3,225	\$8,062	\$3,185	\$7,963
131	CUA50213	Diploma of Musical Theatre	15	9.9	\$180,000	\$88,500	\$91,500	\$12,000	\$18,182	\$6,100	\$9,242
132	ICT50515	Diploma of Database Design and Development	15	5.6	\$24,947	\$0	\$24,947	\$1,663	\$4,455	\$1,663	\$4,455
133	22308VIC	Diploma of Horse Breeding (Stud Management)	14	6.1	\$32,011	\$0	\$32,011	\$2,286	\$5,248	\$2,286	\$5,248
134	BSB51615	Diploma of Quality Auditing	14	4.7	\$28,666	\$0	\$28,666	\$2,048	\$6,104	\$2,048	\$6,104
135	22260VIC	Diploma of Applied Horticultural Science	14	4.5	\$19,188	\$0	\$19,188	\$1,371	\$4,248	\$1,371	\$4,248
136	52697WA	Diploma of Marine Studies	13	5.4	\$28,924	\$0	\$28,924	\$2,225	\$5,324	\$2,225	\$5,324
137	10220NAT	Diploma of Industrial Design	13	4.9	\$17,588	\$0	\$17,588	\$1,353	\$3,560	\$1,353	\$3,560
138	10230NAT	Diploma of Horse Industry Management (Performance Horse)	13	4.7	\$29,128	\$0	\$29,128	\$2,241	\$6,251	\$2,241	\$6,251
139	22316VIC	Advanced Diploma of Myotherapy	12	11.3	\$109,085	\$0	\$109,085	\$9,090	\$9,659	\$9,090	\$9,659
140	CUA50513	Diploma of Live Production Design	12	8.2	\$58,104	\$2,800	\$55,304	\$4,842	\$7,069	\$4,609	\$6,728
141	FNS50915	Diploma of Banking Services Management	12	5.3	\$32,788	\$0	\$32,788	\$2,732	\$6,203	\$2,732	\$6,203
142	10453NAT	Diploma of Personal Care Formulation	12	4.6	\$46,200	\$0	\$46,200	\$3,850	\$10,000	\$3,850	\$10,000
143	MEM50105	Diploma of Engineering - Advanced Trade	12	3.8	\$44,647	\$0	\$44,647	\$3,721	\$11,660	\$3,721	\$11,660
144	CPC60212	Advanced Diploma of Building and Construction (Management)	12	3.4	\$16,239	\$0	\$16,239	\$1,353	\$4,799	\$1,353	\$4,799
145	52725WA	Diploma of Civil and Structural Engineering	12	2.3	\$10,630	\$0	\$10,630	\$886	\$4,631	\$886	\$4,631
146	MSS50216	Diploma of Environmental Monitoring and Technology	11	5.4	\$25,329	\$0	\$25,329	\$2,303	\$4,714	\$2,303	\$4,714
147	AHC51816	Diploma of Organic Farming	11	3.5	\$19,524	\$0	\$19,524	\$1,775	\$5,531	\$1,775	\$5,531
148	CPP50307	Diploma of Property Services (Agency Management)	11	1.8	\$23,137	\$7,510	\$15,627	\$2,103	\$12,926	\$1,421	\$8,730
149	10308NAT	Advanced Diploma of Professional Screenwriting	11	1.5	\$8,882	\$0	\$8,882	\$807	\$5,736	\$807	\$5,736
150	TAE50116	Diploma of Vocational Education and Training	10	8.5	\$6,433	\$0	\$6,433	\$643	\$759	\$643	\$759
151	CUA60113	Advanced Diploma of Dance (Elite Performance)	9	6.8	\$60,350	\$0	\$60,350	\$6,706	\$8,904	\$6,706	\$8,904
152	PSP60816	Advanced Diploma of Translating	9	3.6	\$25,994	\$0	\$25,994	\$2,888	\$7,254	\$2,888	\$7,254
153	MST60216	Advanced Diploma of Textile Design and Development	9	2.0	\$12,780	\$0	\$12,780	\$1,420	\$6,242	\$1,420	\$6,242
154	ICT60115	Advanced Diploma of Information Technology	8	4.4	\$13,710	\$0	\$13,710	\$1,714	\$3,151	\$1,714	\$3,151
155	10060NAT	Advanced Diploma of International Hotel and Resort Management	8	2.4	\$25,488	\$2,090	\$23,398	\$3,186	\$10,446	\$2,925	\$9,589
156	HLT65015	Advanced Diploma of Dental Prosthetics	8	1.4	\$41,410	\$34,505	\$6,905	\$5,176	\$28,873	\$863	\$4,815
157	TAE80113	Graduate Diploma of Adult Language, Literacy and Numeracy Practice	8	1.2	\$14,999	\$0	\$14,999	\$1,875	\$12,096	\$1,875	\$12,096
158	CUA50113	Diploma of Dance (Elite Performance)	7	5.3	\$43,032	\$334	\$42,698	\$6,147	\$8,076	\$6,100	\$8,014
159	FNS51815	Diploma of Financial Services	7	3.5	\$22,296	\$0	\$22,296	\$3,185	\$6,336	\$3,185	\$6,336
160	UEE50111	Diploma of Computer Systems Engineering	7	1.2	\$8,115	\$0	\$8,115	\$1,159	\$6,495	\$1,159	\$6,495

Rank	Course Code	Course name	Enrolments	EFTSL	Tuition fees	Paid upfront	Loans paid	Tuition fees per enrolment	Tuition fees per EFTSL	Loans per enrolment	Loans per EFTSL
161	PSP50116	Diploma of Government	7	0.7	\$5,386	\$0	\$5,386	\$769	\$7,278	\$769	\$7,278
162	10221NAT	Advanced Diploma of Industrial Design	6	6.0	\$19,140	\$0	\$19,140	\$3,190	\$3,190	\$3,190	\$3,190
163	BSB61215	Advanced Diploma of Program Management	6	3.0	\$27,122	\$0	\$27,122	\$4,520	\$9,163	\$4,520	\$9,163
164	CPC50612	Diploma of Hydraulic Services Design	6	1.7	\$9,206	\$596	\$8,610	\$1,534	\$5,318	\$1,435	\$4,974
165	ICT60415	Advanced Diploma of Information Technology Project Management	6	1.2	\$6,404	\$0	\$6,404	\$1,067	\$5,474	\$1,067	\$5,474
166	10198NAT	Graduate Certificate in Networking and Cyber Security	6	0.7	\$16,200	\$40	\$16,160	\$2,700	\$22,500	\$2,693	\$22,444
167	MAR60315	Advanced Diploma of Maritime Operations (Master Unlimited)	5	2.8	\$20,481	\$0	\$20,481	\$4,096	\$7,324	\$4,096	\$7,324
168	MAR50415	Diploma of Maritime Operations (Master up to 500 GT)	5	2.3	\$33,049	\$3,414	\$29,635	\$6,610	\$14,154	\$5,927	\$12,692
169	22273VIC	Diploma of Agronomy	5	2.3	\$11,089	\$0	\$11,089	\$2,218	\$4,903	\$2,218	\$4,903
170	SIT50216	Diploma of Holiday Park and Resort Management	5	2.1	\$3,904	\$0	\$3,904	\$781	\$1,862	\$781	\$1,862
171	HLT64115	Advanced Diploma of Nursing	5	1.9	\$10,450	\$0	\$10,450	\$2,090	\$5,488	\$2,090	\$5,488
172	RII60515	Advanced Diploma of Civil Construction Design	5	1.9	\$19,598	\$0	\$19,598	\$3,920	\$10,348	\$3,920	\$10,348
173	UEE62211	Advanced Diploma of Electrical - Engineering	5	1.8	\$8,766	\$476	\$8,290	\$1,753	\$4,798	\$1,658	\$4,538
174	CPP50216	Diploma of Spatial Information Services	5	1.3	\$7,180	\$0	\$7,180	\$1,436	\$5,523	\$1,436	\$5,523
175	HLT50113	Diploma of Aboriginal and/or Torres Strait Islander Primary Health Care	5	0.7	\$6,454	\$535	\$5,919	\$1,291	\$9,233	\$1,184	\$8,468
176	UEE51211	Diploma of Air-conditioning and Refrigeration Engineering	5	0.2	\$3,525	\$0	\$3,525	\$705	\$14,749	\$705	\$14,749
177	AVI50616	Diploma of Aviation (Aviation Management)	<5	2.2	\$9,517	\$0	\$9,517	n.p.	\$4,353	n.p.	\$4,353
178	AHC51016	Diploma of Sports Turf Management	<5	2.1	\$6,305	\$0	\$6,305	n.p.	\$2,958	n.p.	\$2,958
179	CHC81115	Graduate Diploma of Family Dispute Resolution	<5	1.9	\$13,557	\$0	\$13,557	n.p.	\$7,079	n.p.	\$7,079
180	FNS60415	Advanced Diploma of Financial Planning	<5	1.6	\$4,280	\$0	\$4,280	n.p.	\$2,761	n.p.	\$2,761
181	AHC51516	Diploma of Viticulture	<5	1.0	\$4,306	\$0	\$4,306	n.p.	\$4,154	n.p.	\$4,154
182	52724WA	Advanced Diploma of Civil and Structural Engineering	<5	1.0	\$4,626	\$0	\$4,626	n.p.	\$4,650	n.p.	\$4,650
183	BSB60615	Advanced Diploma of Work Health and Safety	<5	0.7	\$3,416	\$0	\$3,416	n.p.	\$4,858	n.p.	\$4,858
184	CPP50611	Diploma of Security and Risk Management	<5	0.5	\$2,105	\$0	\$2,105	n.p.	\$4,627	n.p.	\$4,627
185	MST50216	Diploma of Textile Design and Development	<5	2.5	\$31,565	\$12,532	\$19,033	n.p.	\$12,626	n.p.	\$7,613
186	ICT51015	Diploma of Telecommunications Engineering	<5	1.5	\$7,910	\$0	\$7,910	n.p.	\$5,273	n.p.	\$5,273
187	22081VIC	Diploma of Auslan	<5	1.4	\$1,563	\$0	\$1,563	n.p.	\$1,125	n.p.	\$1,125
188	RII50415	Diploma of Civil Construction Management	<5	1.0	\$9,100	\$0	\$9,100	n.p.	\$9,101	n.p.	\$9,101
189	22267VIC	Diploma of Electrical Project Management	<5	0.7	\$5,189	\$0	\$5,189	n.p.	\$7,267	n.p.	\$7,267
190	10180NAT	Graduate Diploma of Virtualisation Technologies	<5	0.7	\$9,960	\$0	\$9,960	n.p.	\$14,944	n.p.	\$14,944
191	MSF50313	Diploma of Furniture Design and Technology	<5	0.8	\$2,876	\$0	\$2,876	n.p.	\$3,784	n.p.	\$3,784
192	ICT50815	Diploma of Systems Analysis and Design	<5	0.7	\$6,034	\$0	\$6,034	n.p.	\$8,874	n.p.	\$8,874
193	MAR60215	Advanced Diploma of Maritime Operations (Marine Engineering Class 1)	<5	0.7	\$7,729	\$0	\$7,729	n.p.	\$11,887	n.p.	\$11,887
194	MAR60115	Advanced Diploma of Maritime Operations (Marine Engineering Class 2)	<5	0.5	\$3,964	\$0	\$3,964	n.p.	\$7,765	n.p.	\$7,765
195	MSS50116	Diploma of Sustainable Operations	<5	0.5	\$3,850	\$0	\$3,850	n.p.	\$7,731	n.p.	\$7,731
196	SFI50111	Diploma of Aquaculture	<5	0.4	\$3,102	\$0	\$3,102	n.p.	\$8,078	n.p.	\$8,078
197	SFI50411	Diploma of Fisheries Compliance	<5	0.3	\$2,475	\$0	\$2,475	n.p.	\$7,808	n.p.	\$7,808
198	ACM50512	Diploma of Veterinary Nursing (General Practice)	<5	0.3	\$2,410	\$0	\$2,410	n.p.	\$9,269	n.p.	\$9,269
199	RII50115	Diploma of Surface Operations Management	<5	0.5	\$2,688	\$0	\$2,688	n.p.	\$4,898	n.p.	\$4,898

Rank	Course Code	Course name	Enrolments	EFTSL	Tuition fees	Paid upfront	Loans paid	Tuition fees per enrolment	Tuition fees per EFTSL	Loans per enrolment	Loans per EFTSL
200	PMA50116	Diploma of Process Plant Technology	<5	0.5	\$2,201	\$0	\$2,201	n.p.	\$4,401	n.p.	\$4,401
201	UEE50411	Diploma of Electrical Engineering	<5	0.5	\$2,754	\$0	\$2,754	n.p.	\$5,508	n.p.	\$5,508
202	UEE51111	Diploma of Engineering Technology - Refrigeration and Air-conditioning	<5	0.4	\$1,626	\$0	\$1,626	n.p.	\$4,279	n.p.	\$4,279
204	ACM50412	Diploma of Veterinary Nursing (Emergency and Critical Care)	<5	0.3	\$1,376	\$0	\$1,376	n.p.	\$5,504	n.p.	\$5,504
203	AHC60216	Advanced Diploma of Horticulture	<5	0.3	\$2,250	\$0	\$2,250	n.p.	\$9,000	n.p.	\$9,000
205	10263NAT	Diploma of Applied Geosciences	<5	0.2	\$1,200	\$0	\$1,200	n.p.	\$5,263	n.p.	\$5,263
206	MAR50315	Diploma of Maritime Operations (Watchkeeper Deck)	<5	0.2	\$2,636	\$0	\$2,636	n.p.	\$12,838	n.p.	\$12,838
207	MEA50215	Diploma of Aeroskills (Mechanical)	<5	0.2	\$417	\$0	\$417	n.p.	\$2,085	n.p.	\$2,085
		<b>Total:</b>	<b>44,492</b>	<b>18,734.8</b>	<b>\$155,505,633</b>	<b>\$11,863,753</b>	<b>\$143,584,088</b>	<b>\$3,495</b>	<b>\$8,300</b>	<b>\$3,227</b>	<b>\$7,664</b>

**Table 5: VSL courses ordered by VSL loans paid for the period 1 January 2018 to 30 June 2018**

Rank	Course Code	Course name	Enrolments	EFTSL	Tuition fees	Paid upfront	Loans paid	Tuition fees per enrolment	Tuition fees per EFTSL	Loans per enrolment	Loans per EFTSL
1	HLT54115	Diploma of Nursing	8,943	3,913.0	\$34,642,543	\$4,278,503	\$30,363,404	\$3,874	\$8,853	\$3,395	\$7,760
2	AVI50215	Diploma of Aviation (Commercial Pilot Licence - Aeroplane)	629	273.8	\$14,621,440	\$226,849	\$14,390,766	\$23,246	\$53,406	\$22,879	\$52,564
3	CUA51015	Diploma of Screen and Media	2,389	1,182.2	\$11,561,389	\$1,255,659	\$10,305,730	\$4,839	\$9,780	\$4,314	\$8,718
4	SHB50115	Diploma of Beauty Therapy	2,450	1,127.8	\$10,602,783	\$1,460,866	\$9,141,917	\$4,328	\$9,401	\$3,731	\$8,106
5	CHC52015	Diploma of Community Services	3,175	1,370.3	\$7,101,720	\$211,083	\$6,890,637	\$2,237	\$5,183	\$2,170	\$5,028
6	CHC50113	Diploma of Early Childhood Education and Care	2,966	1,294.8	\$5,646,842	\$291,702	\$5,355,141	\$1,904	\$4,361	\$1,806	\$4,136
7	HLT52015	Diploma of Remedial Massage	1,016	504.6	\$3,787,885	\$189,632	\$3,598,253	\$3,728	\$7,506	\$3,542	\$7,130
8	SIS50612	Diploma of Sport Development	710	277.8	\$3,250,444	\$76,859	\$3,173,584	\$4,578	\$11,699	\$4,470	\$11,422
9	BSB50215	Diploma of Business	1,122	372.2	\$2,843,515	\$166,032	\$2,677,483	\$2,534	\$7,639	\$2,386	\$7,193
10	CUA50815	Diploma of Music Industry	662	356.3	\$2,911,317	\$347,342	\$2,563,975	\$4,398	\$8,171	\$3,873	\$7,196
11	CHC51015	Diploma of Counselling	889	305.9	\$2,418,501	\$162,957	\$2,255,543	\$2,720	\$7,905	\$2,537	\$7,373
12	CUA51115	Diploma of Visual Arts	682	258.8	\$2,312,988	\$88,705	\$2,224,283	\$3,391	\$8,938	\$3,261	\$8,595
13	AVI50315	Diploma of Aviation (Commercial Pilot Licence - Helicopter)	51	20.7	\$2,363,848	\$158,699	\$2,205,149	\$46,350	\$113,960	\$43,238	\$106,309
14	ICT50415	Diploma of Information Technology Networking	549	276.4	\$1,984,899	\$57,889	\$1,927,011	\$3,615	\$7,181	\$3,510	\$6,972
15	AVI50415	Diploma of Aviation (Instrument Rating)	98	44.8	\$1,878,517	\$40,021	\$1,785,168	\$19,169	\$41,904	\$18,216	\$39,822
16	22268VIC	Advanced Diploma of Building Design (Architectural)	638	318.9	\$1,738,249	\$43,540	\$1,694,709	\$2,725	\$5,451	\$2,656	\$5,314
17	MSF50213	Diploma of Interior Design and Decoration	599	239.1	\$1,838,012	\$279,706	\$1,558,306	\$3,068	\$7,689	\$2,602	\$6,519
18	CUA50715	Diploma of Graphic Design	500	226.5	\$1,547,617	\$41,726	\$1,505,891	\$3,095	\$6,834	\$3,012	\$6,649
19	MST50116	Diploma of Applied Fashion Design and Merchandising	396	175.2	\$1,538,473	\$52,057	\$1,486,416	\$3,885	\$8,783	\$3,754	\$8,486
20	CHC50413	Diploma of Youth Work	636	240.5	\$1,538,588	\$78,881	\$1,459,707	\$2,419	\$6,398	\$2,295	\$6,070
21	CUA60615	Advanced Diploma of Screen and Media	325	193.7	\$1,535,886	\$116,023	\$1,419,864	\$4,726	\$7,931	\$4,369	\$7,332
22	CPC50210	Diploma of Building and Construction (Building)	628	306.3	\$1,370,275	\$10,022	\$1,360,253	\$2,182	\$4,474	\$2,166	\$4,442
23	FNS50215	Diploma of Accounting	803	202.2	\$1,272,532	\$80,037	\$1,192,495	\$1,585	\$6,293	\$1,485	\$5,898
24	ICT50215	Diploma of Digital and Interactive Games	264	123.1	\$1,431,951	\$275,337	\$1,156,614	\$5,424	\$11,630	\$4,381	\$9,394
25	BSB51915	Diploma of Leadership and Management	654	198.8	\$1,133,902	\$24,498	\$1,109,404	\$1,734	\$5,703	\$1,696	\$5,580
26	CPP50911	Diploma of Building Design	628	183.9	\$1,076,926	\$37,172	\$1,039,753	\$1,715	\$5,855	\$1,656	\$5,653
27	SIT50316	Diploma of Event Management	458	232.0	\$1,064,875	\$60,880	\$1,003,996	\$2,325	\$4,591	\$2,192	\$4,328
28	CHC50313	Diploma of Child, Youth and Family Intervention	357	119.8	\$1,083,170	\$95,747	\$987,423	\$3,034	\$9,042	\$2,766	\$8,243
29	ICT50115	Diploma of Information Technology	293	137.0	\$935,369	\$4,152	\$931,217	\$3,192	\$6,825	\$3,178	\$6,795
30	BSB50415	Diploma of Business Administration	591	150.4	\$1,007,729	\$114,428	\$893,301	\$1,705	\$6,701	\$1,512	\$5,940
31	BSB52115	Diploma of Library and Information Services	435	109.6	\$897,399	\$11,282	\$886,117	\$2,063	\$8,190	\$2,037	\$8,087
32	BSB52215	Diploma of Legal Services	318	104.4	\$903,914	\$44,298	\$859,616	\$2,843	\$8,658	\$2,703	\$8,234
33	ICT50715	Diploma of Software Development	251	116.3	\$885,922	\$36,306	\$849,616	\$3,530	\$7,615	\$3,385	\$7,303
34	CHC53315	Diploma of Mental Health	472	141.1	\$816,265	\$8,098	\$808,167	\$1,729	\$5,784	\$1,712	\$5,726
35	CUA50915	Diploma of Photography and Photo Imaging	229	91.6	\$831,209	\$39,403	\$791,806	\$3,630	\$9,077	\$3,458	\$8,647
36	CUA60515	Advanced Diploma of Music Industry	180	107.5	\$780,495	\$1,329	\$779,166	\$4,336	\$7,261	\$4,329	\$7,248
37	MSL50116	Diploma of Laboratory Technology	376	162.0	\$764,792	\$6,938	\$757,854	\$2,034	\$4,720	\$2,016	\$4,677
38	CUA60715	Advanced Diploma of Visual Arts	220	80.6	\$699,421	\$12,709	\$686,712	\$3,179	\$8,679	\$3,121	\$8,521
39	AHC51116	Diploma of Conservation and Land Management	248	132.3	\$655,002	\$20	\$654,982	\$2,641	\$4,953	\$2,641	\$4,952
40	22228VIC	Advanced Diploma of Engineering Technology	258	113.7	\$636,735	\$962	\$635,773	\$2,468	\$5,599	\$2,464	\$5,590
41	CUA50415	Diploma of Live Production and Technical Services	165	86.3	\$645,596	\$10,849	\$634,747	\$3,913	\$7,484	\$3,847	\$7,358

Rank	Course Code	Course name	Enrolments	EFTSL	Tuition fees	Paid upfront	Loans paid	Tuition fees per enrolment	Tuition fees per EFTSL	Loans per enrolment	Loans per EFTSL
42	SIT50116	Diploma of Travel and Tourism Management	304	123.8	\$660,951	\$70,121	\$590,831	\$2,174	\$5,337	\$1,944	\$4,771
43	HLT51015	Diploma of Paramedical Science	150	87.5	\$567,503	\$0	\$567,503	\$3,783	\$6,485	\$3,783	\$6,485
44	CPC60115	Advanced Diploma of Building Surveying	180	90.4	\$549,420	\$29,644	\$519,776	\$3,052	\$6,080	\$2,888	\$5,752
45	BSB50615	Diploma of Human Resources Management	352	84.2	\$501,396	\$10,345	\$491,051	\$1,424	\$5,958	\$1,395	\$5,835
46	BSB51415	Diploma of Project Management	296	75.7	\$477,885	\$3,658	\$474,226	\$1,614	\$6,316	\$1,602	\$6,267
47	BSB80615	Graduate Diploma of Management (Learning)	76	45.4	\$461,100	\$0	\$461,100	\$6,067	\$10,161	\$6,067	\$10,161
48	CUA60315	Advanced Diploma of Graphic Design	134	60.7	\$450,160	\$3,364	\$446,795	\$3,359	\$7,418	\$3,334	\$7,362
49	MEM60112	Advanced Diploma of Engineering	205	107.7	\$440,553	\$1,286	\$439,267	\$2,149	\$4,090	\$2,143	\$4,078
50	ICT50615	Diploma of Website Development	185	65.1	\$446,044	\$10,314	\$435,731	\$2,411	\$6,851	\$2,355	\$6,693
51	10343NAT	Advanced Diploma of Professional Game Development	117	64.2	\$1,159,098	\$727,832	\$431,266	\$9,907	\$18,065	\$3,686	\$6,721
52	SIT50416	Diploma of Hospitality Management	224	97.2	\$432,900	\$32,694	\$400,205	\$1,933	\$4,456	\$1,787	\$4,119
53	CPP50116	Diploma of Surveying	130	66.6	\$400,314	\$979	\$399,335	\$3,079	\$6,014	\$3,072	\$5,999
54	AHC50416	Diploma of Horticulture	155	75.0	\$383,767	\$44	\$383,723	\$2,476	\$5,116	\$2,476	\$5,115
55	SHB50216	Diploma of Salon Management	179	75.8	\$382,967	\$0	\$382,967	\$2,139	\$5,054	\$2,139	\$5,054
56	AVI50516	Diploma of Aviation (Flight Instructor)	28	11.1	\$400,086	\$26,818	\$373,267	\$14,289	\$36,073	\$13,331	\$33,655
57	22276VIC	Advanced Diploma of Legal Practice	110	51.7	\$374,876	\$2,287	\$372,589	\$3,408	\$7,248	\$3,387	\$7,204
58	BSB52415	Diploma of Marketing and Communication	120	47.9	\$335,567	\$2,794	\$332,773	\$2,796	\$7,011	\$2,773	\$6,953
59	CHC53215	Diploma of Alcohol and Other Drugs	179	52.5	\$301,373	\$151	\$301,222	\$1,684	\$5,740	\$1,683	\$5,737
60	UEE62111	Advanced Diploma of Engineering Technology - Electrical	116	51.1	\$309,236	\$10,001	\$299,235	\$2,666	\$6,048	\$2,580	\$5,852
61	CHC53415	Diploma of Leisure and Health	97	53.0	\$295,680	\$0	\$295,680	\$3,048	\$5,579	\$3,048	\$5,579
62	MST60116	Advanced Diploma of Applied Fashion Design and Merchandising	94	37.0	\$282,753	\$820	\$281,933	\$3,008	\$7,646	\$2,999	\$7,624
63	AHC50616	Diploma of Landscape Design	123	51.0	\$287,566	\$5,832	\$281,734	\$2,338	\$5,642	\$2,291	\$5,527
64	HLT55115	Diploma of Dental Technology	87	29.3	\$289,146	\$19,078	\$270,068	\$3,324	\$9,866	\$3,104	\$9,215
65	CUA60213	Advanced Diploma of Live Production and Management Services	39	32.9	\$250,825	\$0	\$250,825	\$6,431	\$7,629	\$6,431	\$7,629
66	MEM50212	Diploma of Engineering - Technical	115	42.0	\$243,964	\$324	\$243,640	\$2,121	\$5,807	\$2,119	\$5,799
67	ICT60515	Advanced Diploma of Computer Systems Technology	72	30.7	\$221,592	\$252	\$221,340	\$3,078	\$7,229	\$3,074	\$7,221
68	MEM50311	Diploma of Jewellery and Object Design	74	21.8	\$214,635	\$0	\$214,635	\$2,900	\$9,841	\$2,900	\$9,841
69	UEE60411	Advanced Diploma of Computer Systems Engineering	79	30.9	\$206,867	\$0	\$206,867	\$2,619	\$6,705	\$2,619	\$6,705
70	SIS50310	Diploma of Outdoor Recreation	64	35.4	\$196,570	\$59	\$196,511	\$3,071	\$5,552	\$3,070	\$5,550
71	ICT50315	Diploma of Information Technology Systems Administration	64	21.1	\$195,053	\$3,459	\$191,594	\$3,048	\$9,249	\$2,994	\$9,085
72	FNS50615	Diploma of Financial Planning	92	38.9	\$189,736	\$1,301	\$188,435	\$2,062	\$4,879	\$2,048	\$4,845
73	SIS50115	Diploma of Sport and Recreation Management	71	24.2	\$188,885	\$1,732	\$187,153	\$2,660	\$7,800	\$2,636	\$7,729
74	ACM50110	Diploma of Animal Technology	70	31.2	\$185,200	\$927	\$184,273	\$2,646	\$5,938	\$2,632	\$5,908
75	FNS60215	Advanced Diploma of Accounting	143	29.1	\$181,862	\$5,341	\$176,521	\$1,272	\$6,248	\$1,234	\$6,064
76	MSF60113	Advanced Diploma of Interior Design	64	33.2	\$185,090	\$9,140	\$175,950	\$2,892	\$5,577	\$2,749	\$5,301
77	TLI50415	Diploma of Logistics	93	27.9	\$165,730	\$3,109	\$162,620	\$1,782	\$5,944	\$1,749	\$5,833
78	UEE60211	Advanced Diploma of Electronics and Communications Engineering	55	22.4	\$152,986	\$735	\$152,250	\$2,782	\$6,819	\$2,768	\$6,786
79	22284VIC	Diploma of Business (Public Relations)	34	17.6	\$149,726	\$209	\$149,517	\$4,404	\$8,498	\$4,398	\$8,487
80	22091VIC	Diploma of Professional Writing and Editing	52	21.6	\$149,468	\$93	\$149,375	\$2,874	\$6,905	\$2,873	\$6,901
81	BSB61015	Advanced Diploma of Leadership and Management	87	25.8	\$146,778	\$126	\$146,652	\$1,687	\$5,693	\$1,686	\$5,688



Rank	Course Code	Course name	Enrolments	EFTSL	Tuition fees	Paid upfront	Loans paid	Tuition fees per enrolment	Tuition fees per EFTSL	Loans per enrolment	Loans per EFTSL
82	BSB61115	Advanced Diploma of Conveyancing	74	18.9	\$153,560	\$7,084	\$146,476	\$2,075	\$8,109	\$1,979	\$7,735
83	ICT60215	Advanced Diploma of Network Security	45	19.0	\$159,027	\$14,700	\$144,327	\$3,534	\$8,374	\$3,207	\$7,600
84	AHC50116	Diploma of Agriculture	83	30.4	\$144,175	\$0	\$144,175	\$1,737	\$4,747	\$1,737	\$4,747
85	AVI60216	Advanced Diploma of Aviation (Pilot in Command)	18	9.7	\$158,794	\$21,435	\$137,359	\$8,822	\$16,340	\$7,631	\$14,134
86	HLT57715	Diploma of Practice Management	91	28.4	\$145,270	\$9,572	\$135,698	\$1,596	\$5,120	\$1,491	\$4,783
87	10134NAT	Graduate Diploma of Counselling and Integrated Psychotherapy (Spiritual)	45	10.9	\$134,040	\$0	\$134,040	\$2,979	\$12,269	\$2,979	\$12,269
88	CUA51215	Diploma of Ceramics	50	13.0	\$139,312	\$9,324	\$129,988	\$2,786	\$10,741	\$2,600	\$10,022
89	CPP60116	Advanced Diploma of Surveying	45	17.4	\$128,817	\$168	\$128,649	\$2,863	\$7,399	\$2,859	\$7,389
90	22315VIC	Diploma of Theatre Arts	16	14.9	\$122,902	\$0	\$122,902	\$7,681	\$8,240	\$7,681	\$8,240
91	BSB61315	Advanced Diploma of Marketing and Communication	29	14.7	\$122,026	\$0	\$122,026	\$4,208	\$8,324	\$4,208	\$8,324
92	10326NAT	Diploma of Education (Aboriginal and Torres Strait Islander)	46	31.2	\$127,658	\$6,077	\$121,581	\$2,775	\$4,089	\$2,643	\$3,895
93	SIR50217	Diploma of Visual Merchandising	40	15.4	\$118,679	\$6,804	\$111,874	\$2,967	\$7,713	\$2,797	\$7,270
94	UEE50511	Diploma of Electronics and Communications Engineering	48	12.9	\$112,803	\$999	\$111,804	\$2,350	\$8,772	\$2,329	\$8,695
95	22316VIC	Advanced Diploma of Myotherapy	12	11.3	\$109,085	\$0	\$109,085	\$9,090	\$9,659	\$9,090	\$9,659
96	BSB52015	Diploma of Conveyancing	66	29.0	\$111,123	\$2,961	\$108,161	\$1,684	\$3,828	\$1,639	\$3,726
97	PSP50916	Diploma of Interpreting (LOTE-English)	81	19.5	\$106,930	\$3,167	\$103,763	\$1,320	\$5,481	\$1,281	\$5,319
98	FNS50315	Diploma of Finance and Mortgage Broking Management	58	27.9	\$96,461	\$0	\$96,461	\$1,663	\$3,454	\$1,663	\$3,454
99	10527NAT	Advanced Diploma of Rudolf Steiner Education	38	18.3	\$182,125	\$89,084	\$93,041	\$4,793	\$9,979	\$2,448	\$5,098
100	HLT57915	Diploma of Anaesthetic Technology	23	5.9	\$115,055	\$22,627	\$92,428	\$5,002	\$19,428	\$4,019	\$15,608
101	CUA50213	Diploma of Musical Theatre	15	9.9	\$180,000	\$88,500	\$91,500	\$12,000	\$18,182	\$6,100	\$9,242
102	ICT50915	Diploma of Digital Media Technologies	51	15.7	\$84,256	\$0	\$84,256	\$1,652	\$5,362	\$1,652	\$5,362
103	BSB50815	Diploma of International Business	34	11.1	\$86,894	\$3,010	\$83,884	\$2,556	\$7,857	\$2,467	\$7,585
104	SIT60316	Advanced Diploma of Hospitality Management	53	23.1	\$83,193	\$145	\$83,048	\$1,570	\$3,608	\$1,567	\$3,602
105	BSB60215	Advanced Diploma of Business	49	16.1	\$81,494	\$454	\$81,040	\$1,663	\$5,058	\$1,654	\$5,030
106	CUA60415	Advanced Diploma of Creative Product Development	18	8.5	\$80,387	\$0	\$80,387	\$4,466	\$9,429	\$4,466	\$9,429
107	PSP60916	Advanced Diploma of Interpreting (LOTE-English)	29	17.6	\$78,229	\$0	\$78,229	\$2,698	\$4,435	\$2,698	\$4,435
108	AHC51416	Diploma of Agribusiness Management	25	8.1	\$77,842	\$468	\$77,374	\$3,114	\$9,618	\$3,095	\$9,561
109	BSB51315	Diploma of Work Health and Safety	48	12.4	\$75,589	\$0	\$75,589	\$1,575	\$6,120	\$1,575	\$6,120
110	22229VIC	Diploma of Engineering Technology	38	14.2	\$73,841	\$0	\$73,841	\$1,943	\$5,212	\$1,943	\$5,212
111	22283VIC	Advanced Diploma of Business (Public Relations)	17	8.2	\$69,360	\$295	\$69,065	\$4,080	\$8,496	\$4,063	\$8,460
112	RII50515	Diploma of Civil Construction Design	36	18.9	\$68,294	\$0	\$68,294	\$1,897	\$3,621	\$1,897	\$3,621
113	SIR50212	Diploma of Visual Merchandising	32	11.1	\$74,960	\$13,285	\$61,675	\$2,343	\$6,737	\$1,927	\$5,543
114	CUA60113	Advanced Diploma of Dance (Elite Performance)	9	6.8	\$60,350	\$0	\$60,350	\$6,706	\$8,904	\$6,706	\$8,904
115	SIT60216	Advanced Diploma of Event Management	33	11.4	\$68,026	\$8,027	\$59,998	\$2,061	\$5,943	\$1,818	\$5,242
116	CHC50213	Diploma of School Age Education and Care	53	15.4	\$60,247	\$705	\$59,542	\$1,137	\$3,904	\$1,123	\$3,858
117	CUA50513	Diploma of Live Production Design	12	8.2	\$58,104	\$2,800	\$55,304	\$4,842	\$7,069	\$4,609	\$6,728
118	SIT60116	Advanced Diploma of Travel and Tourism Management	30	18.8	\$53,582	\$340	\$53,242	\$1,786	\$2,845	\$1,775	\$2,827
119	FD50311	Diploma of Food Science and Technology	20	11.2	\$52,794	\$35	\$52,759	\$2,640	\$4,713	\$2,638	\$4,710
120	10219NAT	Diploma of Holistic Management - Sustainable Rural Lands, Business and Communities	33	19.7	\$52,651	\$0	\$52,651	\$1,595	\$2,678	\$1,595	\$2,678
121	AHC52116	Diploma of Permaculture	19	6.9	\$51,452	\$0	\$51,452	\$2,708	\$7,457	\$2,708	\$7,457

Rank	Course Code	Course name	Enrolments	EFTSL	Tuition fees	Paid upfront	Loans paid	Tuition fees per enrolment	Tuition fees per EFTSL	Loans per enrolment	Loans per EFTSL
122	CHC62015	Advanced Diploma of Community Sector Management	33	8.4	\$52,202	\$1,165	\$51,037	\$1,582	\$6,208	\$1,547	\$6,070
123	10073NAT	Advanced Diploma of Acting	16	6.4	\$51,595	\$635	\$50,960	\$3,225	\$8,062	\$3,185	\$7,963
124	AHC50516	Diploma of Arboriculture	27	16.3	\$51,038	\$180	\$50,858	\$1,890	\$3,136	\$1,884	\$3,125
125	10453NAT	Diploma of Personal Care Formulation	12	4.6	\$46,200	\$0	\$46,200	\$3,850	\$10,000	\$3,850	\$10,000
126	MEM50105	Diploma of Engineering - Advanced Trade	12	3.8	\$44,647	\$0	\$44,647	\$3,721	\$11,660	\$3,721	\$11,660
127	MEM60211	Advanced Diploma of Jewellery and Object Design	24	5.6	\$44,017	\$0	\$44,017	\$1,834	\$7,921	\$1,834	\$7,921
128	CUA50113	Diploma of Dance (Elite Performance)	7	5.3	\$43,032	\$334	\$42,698	\$6,147	\$8,076	\$6,100	\$8,014
129	CHC52115	Diploma of Community Development	35	11.6	\$42,395	\$0	\$42,395	\$1,211	\$3,666	\$1,211	\$3,666
130	CHC51115	Diploma of Financial Counselling	43	7.5	\$40,202	\$516	\$39,686	\$935	\$5,328	\$923	\$5,259
131	ICT60315	Advanced Diploma of Information Technology Business Analysis	24	5.1	\$38,933	\$0	\$38,933	\$1,622	\$7,694	\$1,622	\$7,694
132	FNS50915	Diploma of Banking Services Management	12	5.3	\$32,788	\$0	\$32,788	\$2,732	\$6,203	\$2,732	\$6,203
133	22308VIC	Diploma of Horse Breeding (Stud Management)	14	6.1	\$32,011	\$0	\$32,011	\$2,286	\$5,248	\$2,286	\$5,248
134	HLT57415	Diploma of Audiometry	18	5.8	\$33,570	\$3,000	\$30,570	\$1,865	\$5,748	\$1,698	\$5,235
135	TAE50216	Diploma of Training Design and Development	23	4.9	\$29,739	\$52	\$29,687	\$1,293	\$6,059	\$1,291	\$6,048
136	MAR50415	Diploma of Maritime Operations (Master up to 500 GT)	5	2.3	\$33,049	\$3,414	\$29,635	\$6,610	\$14,154	\$5,927	\$12,692
137	10230NAT	Diploma of Horse Industry Management (Performance Horse)	13	4.7	\$29,128	\$0	\$29,128	\$2,241	\$6,251	\$2,241	\$6,251
138	52697WA	Diploma of Marine Studies	13	5.4	\$28,924	\$0	\$28,924	\$2,225	\$5,324	\$2,225	\$5,324
139	BSB51615	Diploma of Quality Auditing	14	4.7	\$28,666	\$0	\$28,666	\$2,048	\$6,104	\$2,048	\$6,104
140	AHC60316	Advanced Diploma of Agribusiness Management	17	4.5	\$27,511	\$0	\$27,511	\$1,618	\$6,114	\$1,618	\$6,114
141	BSB61215	Advanced Diploma of Program Management	6	3.0	\$27,122	\$0	\$27,122	\$4,520	\$9,163	\$4,520	\$9,163
142	CHC50513	Diploma of Youth Justice	28	8.0	\$26,708	\$0	\$26,708	\$954	\$3,350	\$954	\$3,350
143	PSP60816	Advanced Diploma of Translating	9	3.6	\$25,994	\$0	\$25,994	\$2,888	\$7,254	\$2,888	\$7,254
144	MSS50216	Diploma of Environmental Monitoring and Technology	11	5.4	\$25,329	\$0	\$25,329	\$2,303	\$4,714	\$2,303	\$4,714
145	ICT50515	Diploma of Database Design and Development	15	5.6	\$24,947	\$0	\$24,947	\$1,663	\$4,455	\$1,663	\$4,455
146	10060NAT	Advanced Diploma of International Hotel and Resort Management	8	2.4	\$25,488	\$2,090	\$23,398	\$3,186	\$10,446	\$2,925	\$9,589
147	FNS51815	Diploma of Financial Services	7	3.5	\$22,296	\$0	\$22,296	\$3,185	\$6,336	\$3,185	\$6,336
148	BSB60915	Advanced Diploma of Management (Human Resources)	17	4.4	\$21,396	\$42	\$21,354	\$1,259	\$4,831	\$1,256	\$4,821
149	MAR60315	Advanced Diploma of Maritime Operations (Master Unlimited)	5	2.8	\$20,481	\$0	\$20,481	\$4,096	\$7,324	\$4,096	\$7,324
150	CPC50308	Diploma of Building and Construction (Management)	20	4.1	\$19,679	\$0	\$19,679	\$984	\$4,851	\$984	\$4,851
151	RII60515	Advanced Diploma of Civil Construction Design	5	1.9	\$19,598	\$0	\$19,598	\$3,920	\$10,348	\$3,920	\$10,348
152	AHC51816	Diploma of Organic Farming	11	3.5	\$19,524	\$0	\$19,524	\$1,775	\$5,531	\$1,775	\$5,531
153	22260VIC	Diploma of Applied Horticultural Science	14	4.5	\$19,188	\$0	\$19,188	\$1,371	\$4,248	\$1,371	\$4,248
154	10221NAT	Advanced Diploma of Industrial Design	6	6.0	\$19,140	\$0	\$19,140	\$3,190	\$3,190	\$3,190	\$3,190
155	MST50216	Diploma of Textile Design and Development	<5	2.5	\$31,565	\$12,532	\$19,033	n.p.	\$12,626	n.p.	\$7,613
156	10220NAT	Diploma of Industrial Design	13	4.9	\$17,588	\$0	\$17,588	\$1,353	\$3,560	\$1,353	\$3,560
157	CPC60212	Advanced Diploma of Building and Construction (Management)	12	3.4	\$16,239	\$0	\$16,239	\$1,353	\$4,799	\$1,353	\$4,799
158	10198NAT	Graduate Certificate in Networking and Cyber Security	6	0.7	\$16,200	\$40	\$16,160	\$2,700	\$22,500	\$2,693	\$22,444

Rank	Course Code	Course name	Enrolments	EFTSL	Tuition fees	Paid upfront	Loans paid	Tuition fees per enrolment	Tuition fees per EFTSL	Loans per enrolment	Loans per EFTSL
159	CPP50307	Diploma of Property Services (Agency Management)	11	1.8	\$23,137	\$7,510	\$15,627	\$2,103	\$12,926	\$1,421	\$8,730
160	TAE80113	Graduate Diploma of Adult Language, Literacy and Numeracy Practice	8	1.2	\$14,999	\$0	\$14,999	\$1,875	\$12,096	\$1,875	\$12,096
161	ICT60115	Advanced Diploma of Information Technology	8	4.4	\$13,710	\$0	\$13,710	\$1,714	\$3,151	\$1,714	\$3,151
162	CHC81115	Graduate Diploma of Family Dispute Resolution	<5	1.9	\$13,557	\$0	\$13,557	n.p.	\$7,079	n.p.	\$7,079
163	MST60216	Advanced Diploma of Textile Design and Development	9	2.0	\$12,780	\$0	\$12,780	\$1,420	\$6,242	\$1,420	\$6,242
164	22273VIC	Diploma of Agronomy	5	2.3	\$11,089	\$0	\$11,089	\$2,218	\$4,903	\$2,218	\$4,903
165	52725WA	Diploma of Civil and Structural Engineering	12	2.3	\$10,630	\$0	\$10,630	\$886	\$4,631	\$886	\$4,631
166	HLT64115	Advanced Diploma of Nursing	5	1.9	\$10,450	\$0	\$10,450	\$2,090	\$5,488	\$2,090	\$5,488
167	10180NAT	Graduate Diploma of Virtualisation Technologies	<5	0.7	\$9,960	\$0	\$9,960	n.p.	\$14,944	n.p.	\$14,944
168	AVI50616	Diploma of Aviation (Aviation Management)	<5	2.2	\$9,517	\$0	\$9,517	n.p.	\$4,353	n.p.	\$4,353
169	RII50415	Diploma of Civil Construction Management	<5	1.0	\$9,100	\$0	\$9,100	n.p.	\$9,101	n.p.	\$9,101
170	10308NAT	Advanced Diploma of Professional Screenwriting	11	1.5	\$8,882	\$0	\$8,882	\$807	\$5,736	\$807	\$5,736
171	CPC50612	Diploma of Hydraulic Services Design	6	1.7	\$9,206	\$596	\$8,610	\$1,534	\$5,318	\$1,435	\$4,974
172	UEE62211	Advanced Diploma of Electrical - Engineering	5	1.8	\$8,766	\$476	\$8,290	\$1,753	\$4,798	\$1,658	\$4,538
173	UEE50111	Diploma of Computer Systems Engineering	7	1.2	\$8,115	\$0	\$8,115	\$1,159	\$6,495	\$1,159	\$6,495
174	ICT51015	Diploma of Telecommunications Engineering	<5	1.5	\$7,910	\$0	\$7,910	n.p.	\$5,273	n.p.	\$5,273
175	MAR60215	Advanced Diploma of Maritime Operations (Marine Engineering Class 1)	<5	0.7	\$7,729	\$0	\$7,729	n.p.	\$11,887	n.p.	\$11,887
176	CPP50216	Diploma of Spatial Information Services	5	1.3	\$7,180	\$0	\$7,180	\$1,436	\$5,523	\$1,436	\$5,523
177	HLT65015	Advanced Diploma of Dental Prosthetics	8	1.4	\$41,410	\$34,505	\$6,905	\$5,176	\$28,873	\$863	\$4,815
178	TAE50116	Diploma of Vocational Education and Training	10	8.5	\$6,433	\$0	\$6,433	\$643	\$759	\$643	\$759
179	ICT60415	Advanced Diploma of Information Technology Project Management	6	1.2	\$6,404	\$0	\$6,404	\$1,067	\$5,474	\$1,067	\$5,474
180	AHC51016	Diploma of Sports Turf Management	<5	2.1	\$6,305	\$0	\$6,305	n.p.	\$2,958	n.p.	\$2,958
181	ICT50815	Diploma of Systems Analysis and Design	<5	0.7	\$6,034	\$0	\$6,034	n.p.	\$8,874	n.p.	\$8,874
182	HLT50113	Diploma of Aboriginal and/or Torres Strait Islander Primary Health Care	5	0.7	\$6,454	\$535	\$5,919	\$1,291	\$9,233	\$1,184	\$8,468
183	PSP50116	Diploma of Government	7	0.7	\$5,386	\$0	\$5,386	\$769	\$7,278	\$769	\$7,278
184	22267VIC	Diploma of Electrical Project Management	<5	0.7	\$5,189	\$0	\$5,189	n.p.	\$7,267	n.p.	\$7,267
185	52724WA	Advanced Diploma of Civil and Structural Engineering	<5	1.0	\$4,626	\$0	\$4,626	n.p.	\$4,650	n.p.	\$4,650
186	AHC51516	Diploma of Viticulture	<5	1.0	\$4,306	\$0	\$4,306	n.p.	\$4,154	n.p.	\$4,154
187	FNS60415	Advanced Diploma of Financial Planning	<5	1.6	\$4,280	\$0	\$4,280	n.p.	\$2,761	n.p.	\$2,761
188	MAR60115	Advanced Diploma of Maritime Operations (Marine Engineering Class 2)	<5	0.5	\$3,964	\$0	\$3,964	n.p.	\$7,765	n.p.	\$7,765
189	SIT50216	Diploma of Holiday Park and Resort Management	5	2.1	\$3,904	\$0	\$3,904	\$781	\$1,862	\$781	\$1,862
190	MSS50116	Diploma of Sustainable Operations	<5	0.5	\$3,850	\$0	\$3,850	n.p.	\$7,731	n.p.	\$7,731
191	UEE51211	Diploma of Air-conditioning and Refrigeration Engineering	5	0.2	\$3,525	\$0	\$3,525	\$705	\$14,749	\$705	\$14,749
192	BSB60615	Advanced Diploma of Work Health and Safety	<5	0.7	\$3,416	\$0	\$3,416	n.p.	\$4,858	n.p.	\$4,858
193	SFI50111	Diploma of Aquaculture	<5	0.4	\$3,102	\$0	\$3,102	n.p.	\$8,078	n.p.	\$8,078
194	MSF50313	Diploma of Furniture Design and Technology	<5	0.8	\$2,876	\$0	\$2,876	n.p.	\$3,784	n.p.	\$3,784
195	UEE50411	Diploma of Electrical Engineering	<5	0.5	\$2,754	\$0	\$2,754	n.p.	\$5,508	n.p.	\$5,508
196	RII50115	Diploma of Surface Operations Management	<5	0.5	\$2,688	\$0	\$2,688	n.p.	\$4,898	n.p.	\$4,898
197	MAR50315	Diploma of Maritime Operations (Watchkeeper Deck)	<5	0.2	\$2,636	\$0	\$2,636	n.p.	\$12,838	n.p.	\$12,838

Rank	Course Code	Course name	Enrolments	EFTSL	Tuition fees	Paid upfront	Loans paid	Tuition fees per enrolment	Tuition fees per EFTSL	Loans per enrolment	Loans per EFTSL
198	SFI50411	Diploma of Fisheries Compliance	<5	0.3	\$2,475	\$0	\$2,475	n.p.	\$7,808	n.p.	\$7,808
199	ACM50512	Diploma of Veterinary Nursing (General Practice)	<5	0.3	\$2,410	\$0	\$2,410	n.p.	\$9,269	n.p.	\$9,269
200	AHC60216	Advanced Diploma of Horticulture	<5	0.3	\$2,250	\$0	\$2,250	n.p.	\$9,000	n.p.	\$9,000
201	PMA50116	Diploma of Process Plant Technology	<5	0.5	\$2,201	\$0	\$2,201	n.p.	\$4,401	n.p.	\$4,401
202	CPP50611	Diploma of Security and Risk Management	<5	0.5	\$2,105	\$0	\$2,105	n.p.	\$4,627	n.p.	\$4,627
203	UEE51111	Diploma of Engineering Technology - Refrigeration and Air-conditioning	<5	0.4	\$1,626	\$0	\$1,626	n.p.	\$4,279	n.p.	\$4,279
204	22081VIC	Diploma of Auslan	<5	1.4	\$1,563	\$0	\$1,563	n.p.	\$1,125	n.p.	\$1,125
205	ACM50412	Diploma of Veterinary Nursing (Emergency and Critical Care)	<5	0.3	\$1,376	\$0	\$1,376	n.p.	\$5,504	n.p.	\$5,504
206	10263NAT	Diploma of Applied Geosciences	<5	0.2	\$1,200	\$0	\$1,200	n.p.	\$5,263	n.p.	\$5,263
207	MEA50215	Diploma of Aeroskills (Mechanical)	<5	0.2	\$417	\$0	\$417	n.p.	\$2,085	n.p.	\$2,085
		<b>Total:</b>	<b>44,492</b>	<b>18,734.8</b>	<b>\$155,505,633</b>	<b>\$11,863,753</b>	<b>\$143,584,088</b>	<b>\$3,495</b>	<b>\$8,300</b>	<b>\$3,227</b>	<b>\$7,664</b>