



Australian Government



skills for
education and
employment



SEE PROGRAM FOR EMPLOYERS

About the Program

The Skills for Education and Employment (SEE) Program provides access to foundation skills training for all Australians seeking to improve their reading, writing, maths and basic computer skills, enabling them to actively participate in the economy and society.

From 1 July 2024 your business can partner with one of our [SEE Providers](#) to design and deliver a Workplace-Based Training Project specific to your business needs. These projects can be delivered to your employees in the workplace, at a time that is convenient to you.

Who can benefit from the Program?

Your employees

Around one in five Australian adults – or about 3 million people – have low literacy and/or numeracy skills.¹ Approximately 60 per cent of these individuals are employed. They may struggle to fully participate in the workplace, adjust to workplace changes, or advance their careers.

The SEE Program offers free, customised training to help your employees improve their foundation skills, leading to increased confidence and job satisfaction.

Your business

The Australian Industry Group (Ai Group) found 99% of surveyed employers report their businesses as highly affected by low levels of literacy and numeracy in their workforce.²

Your business can benefit from tailored training that improves verbal and written communication skills and enhances numeracy and digital skills. This can lead to increased knowledge and confidence which may lead to reduced staff turnover.

How is a Project delivered?

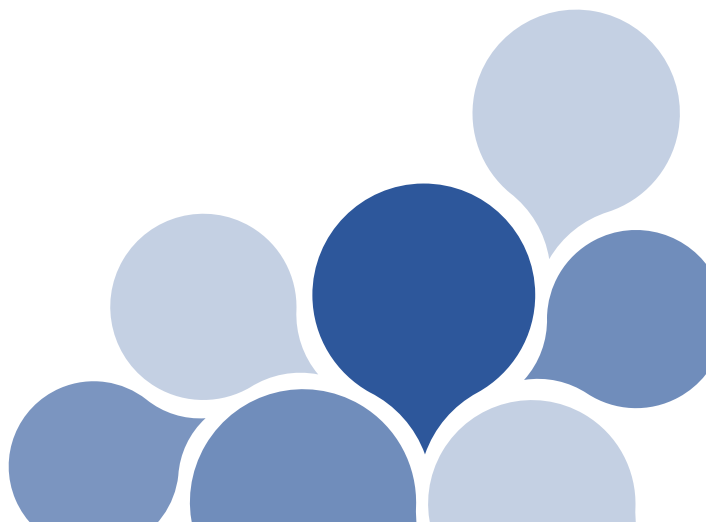
Your [SEE Provider](#) will work with you to identify workplace and employee skills needs, typically through one on one skills assessments, and to develop relevant, flexible and tailored training, to address your business needs and the learning and development needs of your employees.

As an employer, you are encouraged to support the delivery of the project. You can do this by providing your employees time during work hours to complete the training and offering an appropriate training space at your workplace.

The length of the training course depends on your business and employee training needs. Typically, Workplace-Based Training Projects are on average 200 to 250 hours of training and assessment, delivered over 6 to 8 months.

¹ OECD (2017), *Building Skills for All in Australia*

² Ai Group (2018), *Skilling a National Imperative*



How to apply

You can partner with your [local SEE Provider](#) who will design and deliver a project that suits your business needs. The SEE Provider is responsible for completing and submitting an online application form, identifying the learning needs of your employees, the type of training intended to be delivered and the amount of training and assessment they expect to undertake. The SEE Provider is funded by the Department of Employment and Workplace Relations to deliver the training project.

The department will run up to four project rounds per year. Generally, the application assessment process, from receipt of a project application to notifying the SEE Provider of the outcome, takes around 6 weeks to complete.

Get Started

Get in touch with your [local SEE Provider](#) to get started on the Workplace-Based Training Project for your business.

How to access the SEE Program

To find out how to access the SEE Program, you can contact your local SEE Provider by visiting dewr.gov.au/SEE

or scan the QR code below.

